

ALUCO-WOOD ZAIAN PRODUCTS



AluCo Wood

AluCo Wood, an environmentally friendly exterior wood made from aluminum and high-tech composite technology, effectively eliminates the natural defects of pure natural wood while providing waterproofing, flame retardancy, corrosion resistance, acid and alkali resistance, crack resistance, deformation resistance, and easy maintenance and cleaning. Its surface has undergone special technical treatment, making it particularly suitable for use in humid environments where other wooden products cannot compare.

3

Vibrant beauty



6

Environmental Safety



7

Smart Energy Saving



10

Easy Installation



11

Advantages



13

Products



16-20

Product Application Series



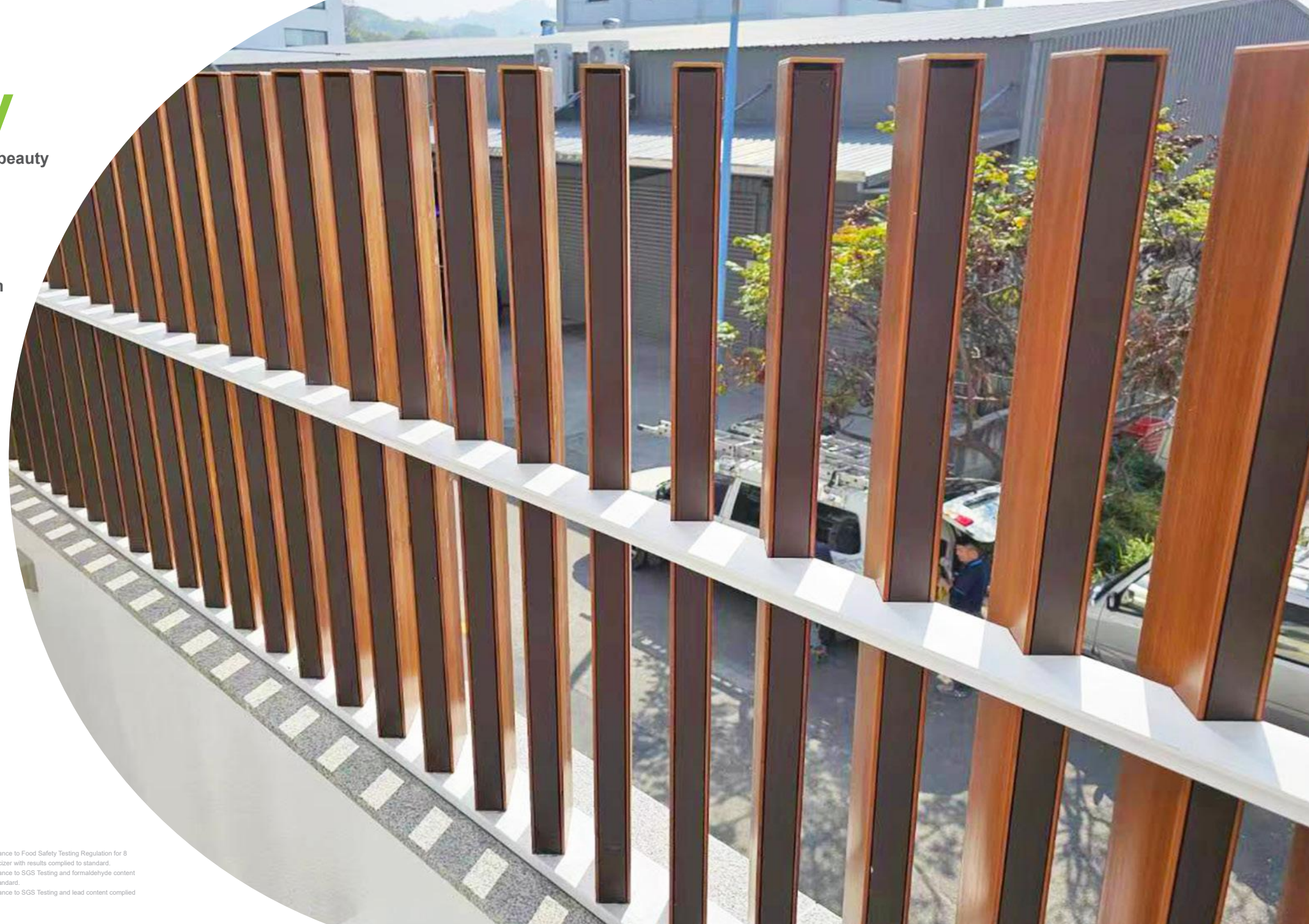
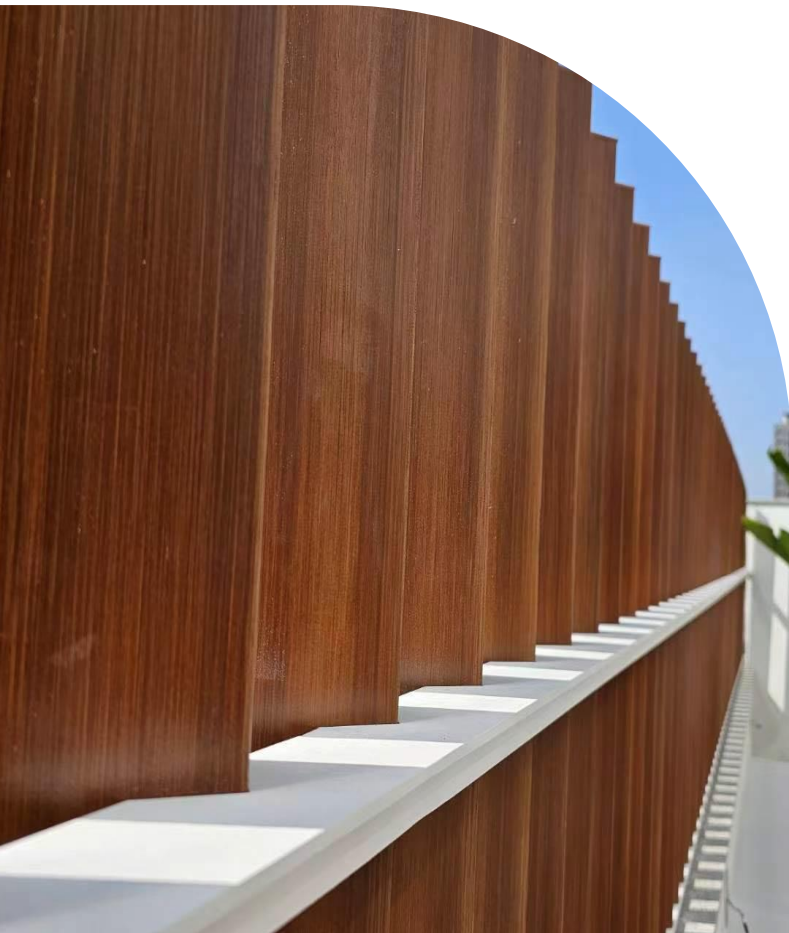
27

More Scenes



3 Vibrant beauty

- ◆ Unique wood grain texture, appearance resembles the beauty and aesthetic of natural wood.
- ◆ Weathering changes of color resemble closely to natural wood.
- ◆ Conceal hardware accessories, provide aesthetic visual effects.
- ◆ Solve the unnatural appearance of traditional aluminum stained and powder-coated wood color paint surfaces.
- ◆ Large range of product categories, unlimited in design.



Tested accordance to Food Safety Testing Regulation for 8 types of Plasticizer with results complied to standard.
Tested accordance to SGS Testing and formaldehyde content complied to standard.
Tested accordance to SGS Testing and lead content complied to standard.



Environmental Safety⁶

Water resistance, corrosion resistance.

◆ Fire and flame retardant properties.

◆ Resistance to acid & alkali (suitable for application in spa, swimming pool, bathroom).

◆ Superior weatherability, do not deteriorate, crack or brittle.

◆ Tested accordance to SGS testing with formaldehyde and lead contents complied to standard and tested accordance to Food Safety Testing Regulation for 8 types of plasticizers with results complied to standard.



Tested accordance to Food Safety Testing Regulation for 8 types of Plasticizer with results complied to standard.
Tested accordance to SGS Testing and formaldehyde content complied to standard.
Tested accordance to SGS Testing and lead content complied to standard.

7 Smart Energy Saving

- ◆ Promote energy saving effect with thermal insulation and heat preservation properties of aluminum profiles (lower thermal conductivity).
- ◆ Stable quality, long service life, reduce wastage of resources.
- ◆ Sun shade fences series satisfy window opening, ventilation, sufficient level of sun lighting, allowing high wind pressure reduction and shading effect, enhance energy-saving.
- ◆ Decking series effectively absorb ultraviolet light & radiant heat, reducing discomfort from reflection of sunlight.



Tested accordance to Food Safety Testing Regulation for 8 types of Plasticizer with results complied to standard.
Tested accordance to SGS Testing and formaldehyde content complied to standard.
Tested accordance to SGS Testing and lead content complied to standard.



Easy Installation ¹⁰

- ◆ Clip-on structure make installation simple, fast.
- ◆ Can nail, plane, saw.... easy to install, reduce installation costs, economical and affordable.
- ◆ Low maintenance costs.



Advantages

Aluminium is a light and low density material. Aluminium and wood composite materials both use extrusion to form the industrial products. Although both are very different materials with very different characteristics, when apply together, these very different characteristics will form a new material - 'AluCo Wood' with complementary characteristics. 'AluCo Wood' can be used similar to wood composites but its applications are very much wider because the tools and accessories required for installation are common cross the board. This addresses the past which using different materials, methodology (metal + wood) and their cost increased problems. Because the aluminium and wood composite in 'AluCo Wood' are embedded together, the finishes after installation not only provide a very good surface effect and at the same time, the material addresses the past wood composite unstable issues. These highly efficient and stable products significantly reduce in costs.

Based on our original system concept ideas - For future development, the design for other systems will centre around this original concept, retaining the texture and visual of wood in the wood composite and embedding with aluminum profiles. The customers could use the standard products and design new system base on the individual requirement in terms of dimension, size, shape and installation such as sun shade, wall decoration, ceiling, pergola, furniture...etc and any products which are made of wood.



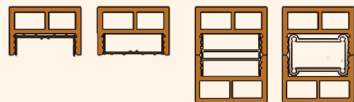
The production process of plastic wood is the same as that of aluminum alloy. It is formed by heating and extruding the mold. Therefore, the two special-shaped materials can be perfectly combined with the profile buckle design.



Patented buckle design allows aluminum profiles to be buckled in both directions, increasing the profile's usability.



By using the mold deformation between plastic wood and aluminum profiles, profiles of different shapes, sizes and structural strengths can be created according to different functions.



AluCo Wood Series Bending failure load (kgf) CNs2215(2012)

Model	Test Results
M6040	>220 kgf
H6080	Vertical >450 kgf; Horizontal >750 kgf
S6080	Vertical >450 kgf; Horizontal >1200 kgf
M40100	>580 kgf
H40200	>1000 kgf
M12050	Face up >480 kgf; Face down >750 kgf
S120100	>2000 kgf
M12060	>550 kgf
S120120	>2200 kgf
S60100	>900 kgf



SGS

PVC Testing

Formaldehyde(Mg/L) :	not detected
Lead content(mg/kg) :	not detected
Eight plasticizer content (%) :	not detected
Acid resistance test :	Surface no influence
Alkali resistance test :	Surface no influence
Flame Retardant Performance :	Flame Rated
Weather test UV exposure 600h :	Colour difference(ΔE) ≤ 3
No crack and chalking on exterior of product	
Salt Spray Test :	No surface corrosion phenomenon

Products



S6080

SIZE : 60mm x 80mm
 LENGTH : 2200mm/2800mm/
 3000mm / 3600mm/customized



H40200

SIZE : 40mm x 200mm
 LENGTH : 2200mm/2800mm/
 3000mm / 3600mm/customized



M120120

SIZE : 120mm x 120mm
 LENGTH : 2200mm/2800mm/
 3000mm / 3600mm/customized



M6040

SIZE : 60mm x 40mm
 LENGTH : 2200mm/2800mm/
 3000mm / 3600mm/customized



M8014

SIZE : 80mm x 14mm
 LENGTH : 2200mm/2800mm/
 3000mm / 3600mm/customized



M40100

SIZE : 40mm x 100mm
 LENGTH : 2200mm/2800mm/
 3000mm / 3600mm/customized



Product Application Series

Fence Series

Delicate texture and cross colour intersection and material usages for building space architectural could achieve unlimited design possibilities. Provide warm and stylish ambience for comfort living. Application : residence, wall panel, roof panel, ceiling decoration, bathroom, swimming pool SPA area, stadiums, concert halls, commercial space and ... etc





Product Application Series

Gazebo Series
AluCoWood Kiosk, Gazebo, Pavillon, Walkway Shelter Series/Glass Curtain/
Conservatory-Large range of profiles available, unlimited combinations and
assemblies possibilities. Perfectly display the beauty, texture and aesthetic of natural
wood and extend the beauty of architectural surrounding.
Can customize to individual exclusive design environment.





Product Application Series

Pergola Series

AluCo Wood Pergola - divided into Simplify Type, Standard Type, Load Structure Type, size available from 3x3 to 12x12 and can customize to exclusive sizes.

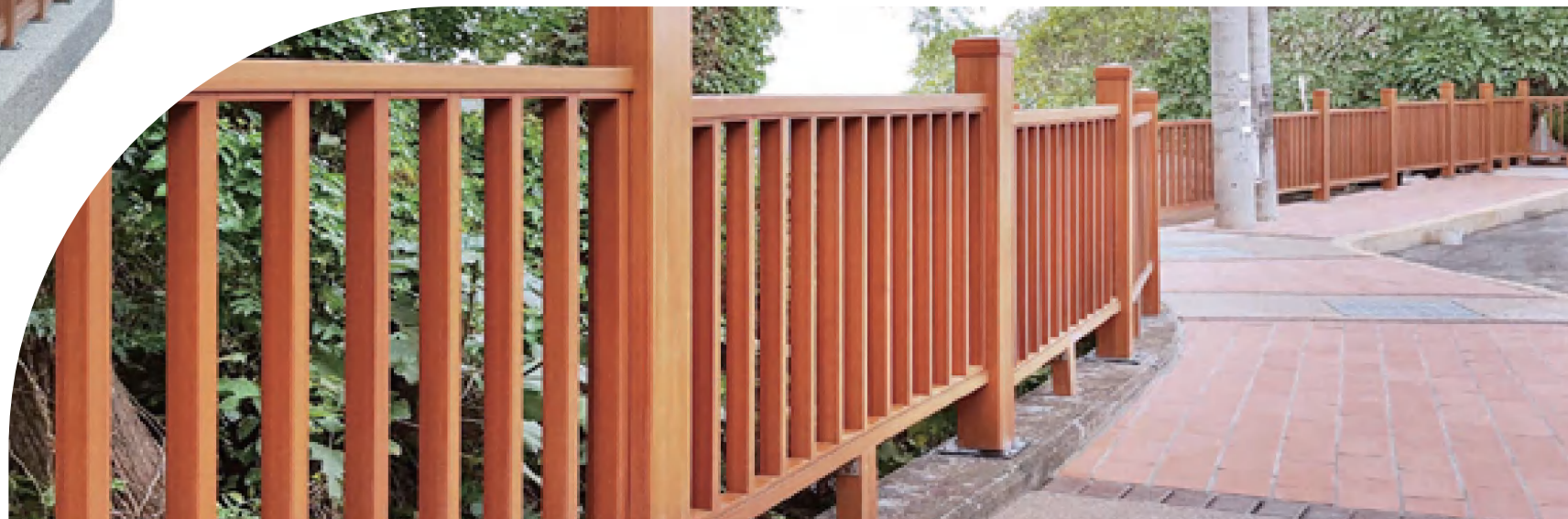
AluCo Wood Pergola has a structural core composed of aluminum alloy composite. The structure is not only lightweight, high strength but also has slight elastic properties and does not break easily, does not corrode and fracture.... overcome shortcoming problems of other common materials.



Product Application Series

AluCoWood Railing

AluCoWood Railing -easy assembly,stylish with multiple combination application,hardware accessories perfectly conceal,outer make with high quality PVC with exterior appearance resembles the unique beauty,texture and aesthetic of natural wood,core aluminum alloy with structural strength,safe,stable and beautiful. Style can be customized accordance to needs and designs of existing planning





Product Application Series

Landscape lighting series

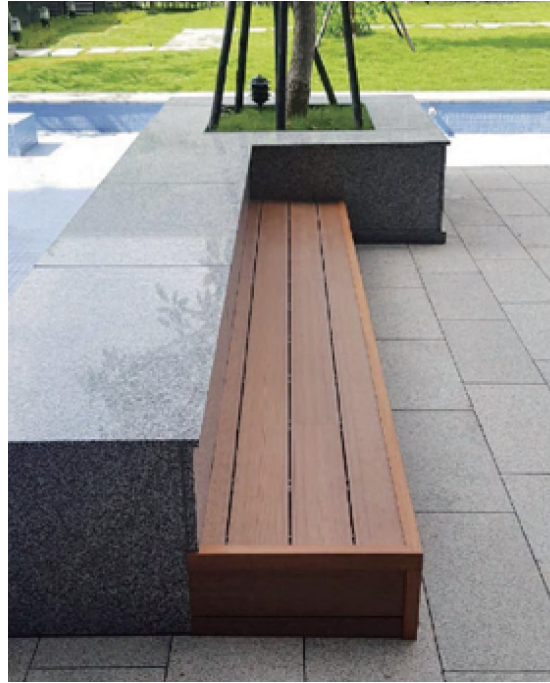
The cavity structure of aluminum wood can be used to set up circuit foundations, lighting equipment, water pipe systems, etc.
The PVC plastic wood shell is waterproof, flame retardant, non-conductive, safe and beautiful.



Product Application Series

Outdoor Garden Furniture

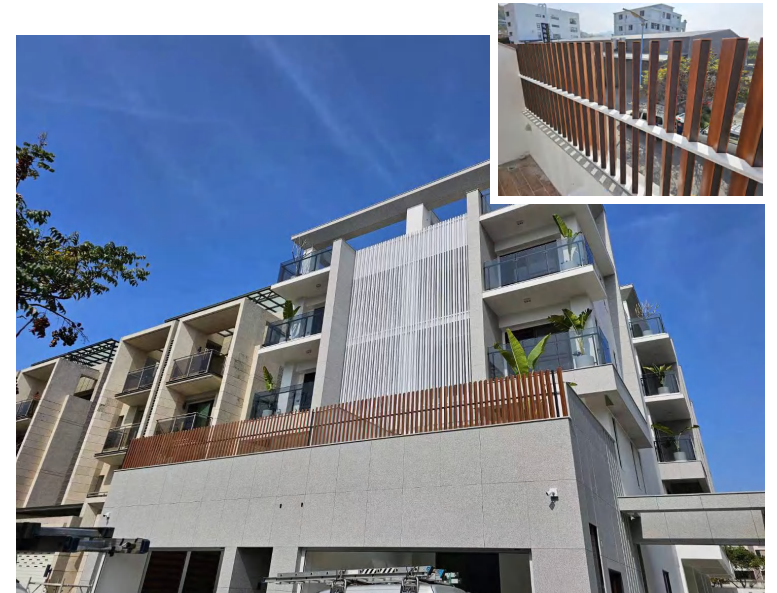
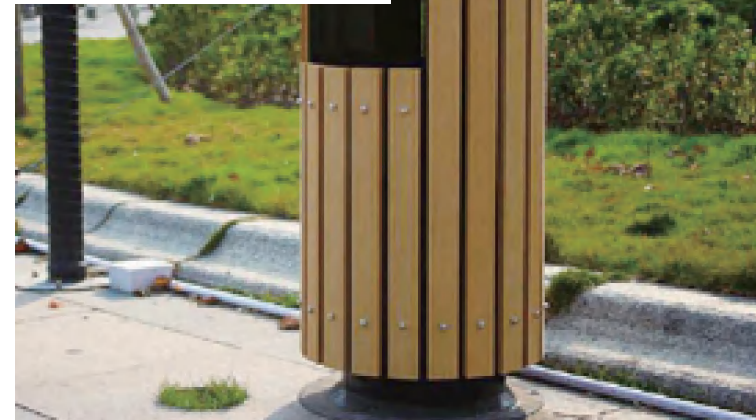
AluCoWood Outdoor Garden Furniture-Resemble the beauty, texture and aesthetic of natural wood; have characteristics like corrosion resistance, flame retardant, water resistance, termite resistance, do not deform or crack and etc. Stable quality, long service life and reduce wastage of resources.



27 **More Scenes**



Various types can be freely combined to form different types of outdoor landscape systems!





ZHEJIANG ZAIAN MATERIAL CO., LTD.

Xiaoshan Chamber Of Commerce Building,
185 Jincheng Road,Beiqian Street,
Hangzhou,Zhejiang,China

E-mail : info@zaiamaterial.com

Website : www.zaiamaterial.com