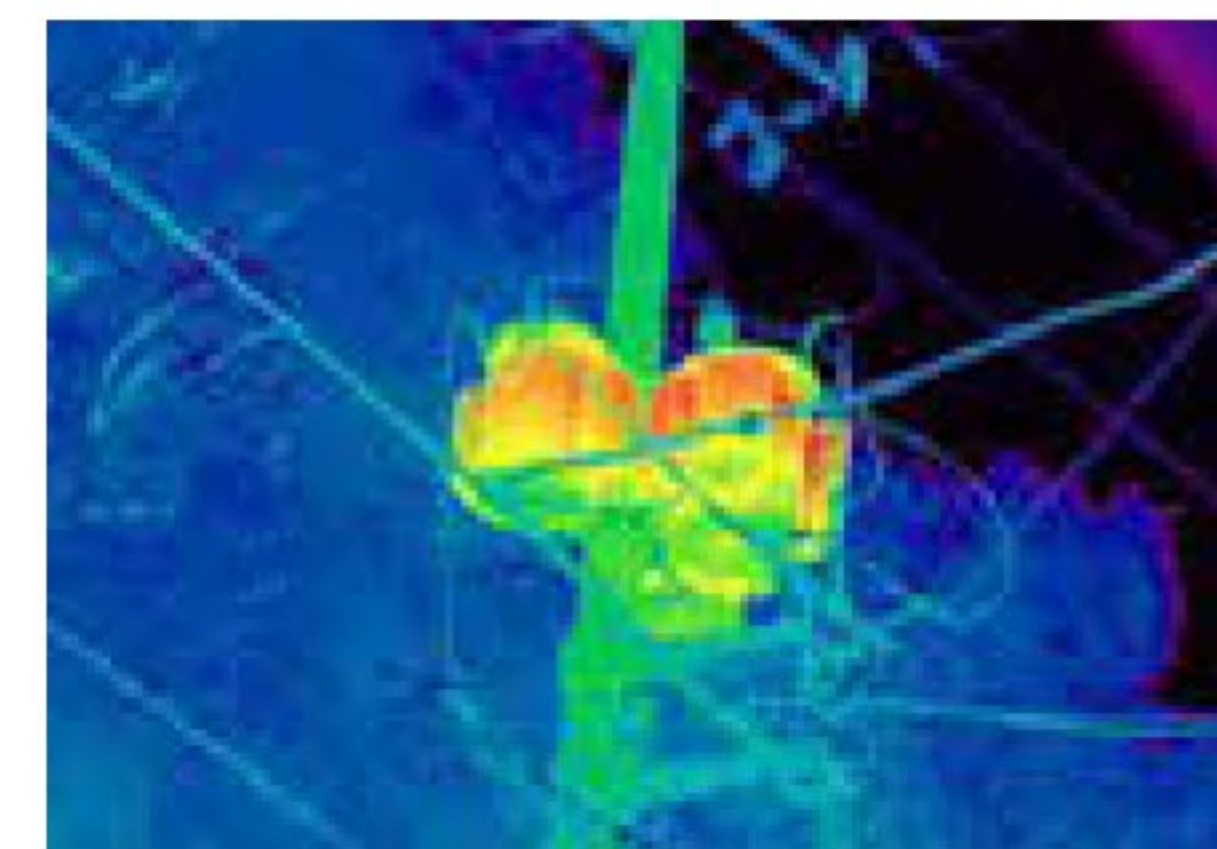
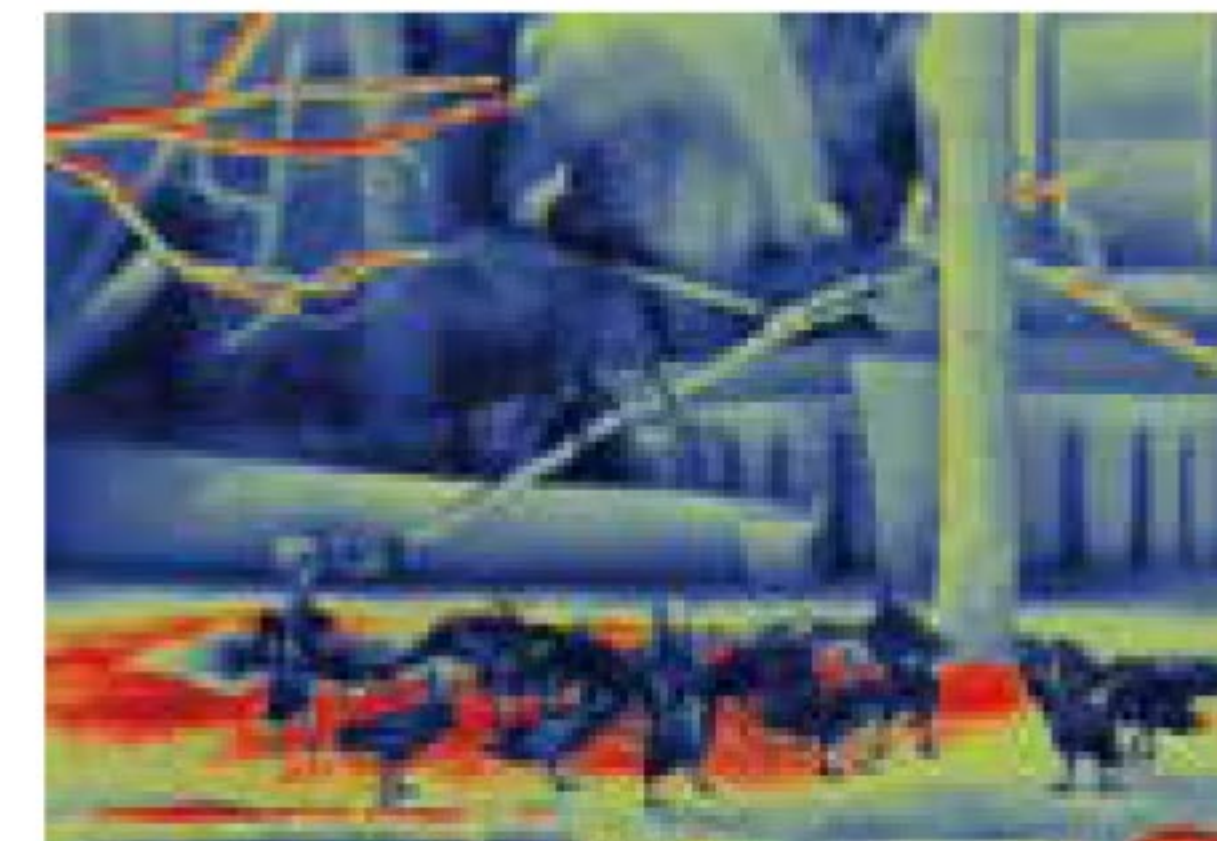


TS325/TS635/TS675

This product is a night and day dual-use infrared night vision instrument, suitable for nature observation, outdoor hunting, searching and rescuing, maritime operating, night time patrolling, personal security, etc.

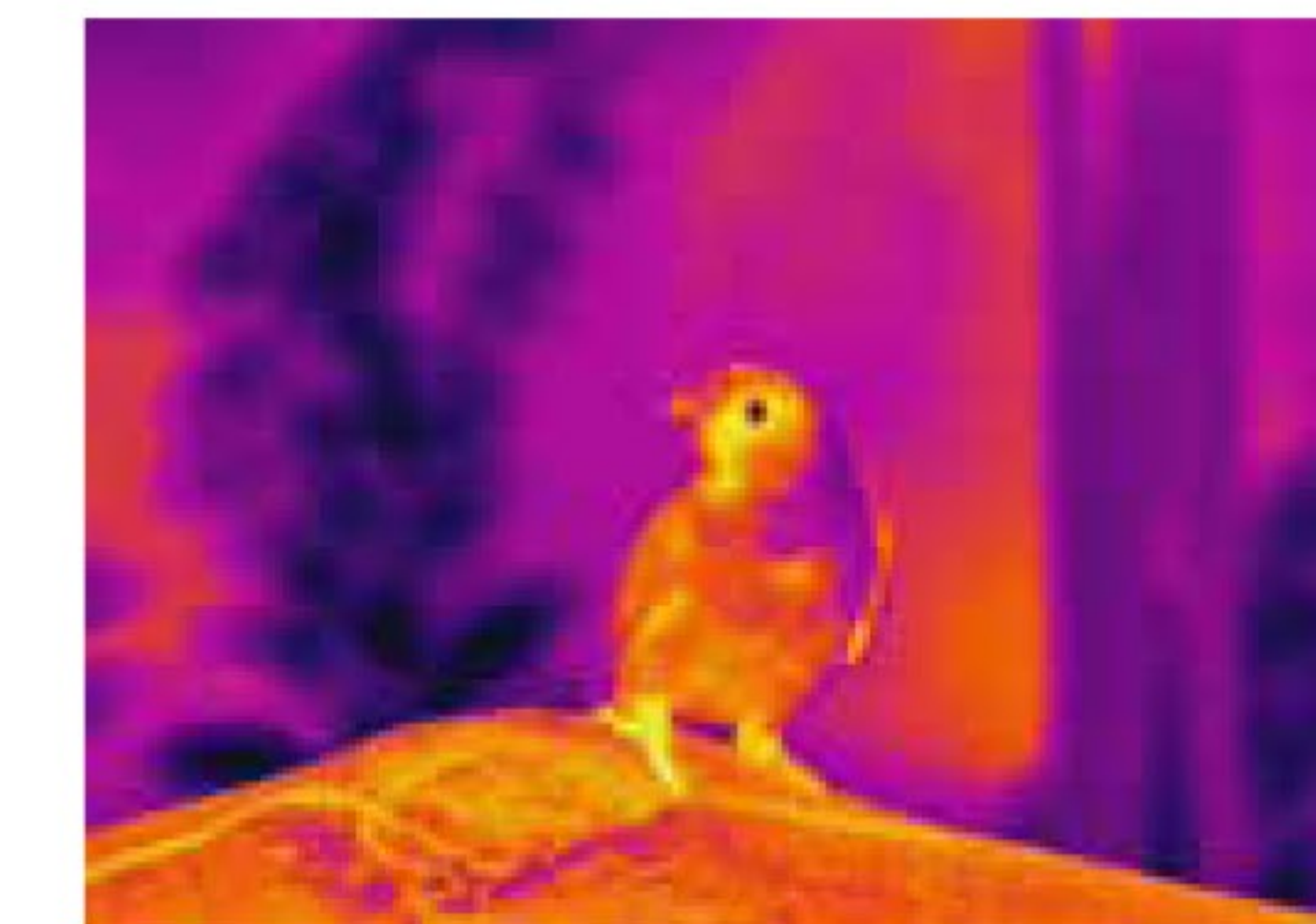


| Model | TS325 | TS635 | TS675 | |
|---------------------------|---|--|--|--------|
| Detector type | Vanadium oxide uncooled infrared focal plane | Vanadium oxide uncooled infrared focal plane | Vanadium oxide uncooled infrared focal plane | |
| Infrared image resolution | 384×288 | 640×512 | 640×512 | |
| Pixel spacing | 12μm | 12μm | 12μm | |
| Laser type | | 905nm(Fist class laser) | | |
| Temperature range | | 5~700m | | |
| Accuracy | | <400m ±1m>;400m±0.4% | | |
| Infrared focal length | 25mm; 35mm; 54mm; 75mm | | | |
| Wavelength coverage | 8μm ~ 14μm | | | |
| NTED | ≤40mk@ 25°C, @F/1.0 | | | |
| Frame rate | ≤50Hz | | | |
| Focusing mode | Manual | | | |
| Display type | OLED | | | |
| Visible image resolution | 1440×1080 | | | |
| Display size | 0.39 inch | | | |
| Magnification | 1×/2×/4×/8× | | | |
| Diopter adjustment | ±5SD | | | |
| Color palette | White hot, Black hot, Fire hot, Rainbow, Iron red, Cold color | | | |
| Language | Chinese, English, Russian, German | | | |
| USB interface | Charge/export pictures and videos | | | |
| Battery type | Built-in 18350 battery (Working time: ≥5 hours) | | | |
| Impact | ≤1000G | | | |
| Specification | | | | |
| Lens | 25mm | 35mm | 54mm | 75mm |
| Detection distance | 25mm | 35mm | 54mm | 75mm |
| Human 1.7mx0.5mx0.3m | 2361m | 3306m | 5100m | 7083m |
| Cars 4.5mx2.0mx1.5m | 6250m | 8750m | 13500m | 18750m |
| Identification distance | 25mm | 35mm | 54mm | 75mm |
| Human 1.7mx0.5mx0.3m | 590m | 826m | 1275m | 1771m |
| Cars 4.5mx2.0mx1.5m | 1563m | 2188m | 3375m | 4688m |

TS323/TS353/TS373

This product is a night and day dual-use infrared night vision instrument, suitable for nature observation, outdoor hunting, searching and rescuing, maritime operating, night time patrolling, personal security, etc.

- Monocular observation, easy to carry forward observation by a single person.
- Multiple parameters and color palette can be set to observe and take photos of the target day and night.



| Model | TS323 | TS353 | TS373 | |
|-------------------------|---|--------|--------|--------|
| Detector type | Amorphous silicon uncooled infrared focal plane | | | |
| Resolution | 384×288 | | | |
| Pixel spacing | 17μm | | | |
| Wavelength coverage | 8μm ~ 14μm | | | |
| Frame rate | 60Hz | | | |
| Distance of exit pupil | 48mm | | | |
| Diameter of exit pupil | 8mm | | | |
| Diopter adjustment | ±4SD | | | |
| Infrared lens focus | 25mm, 35mm, 54mm, 75mm | | | |
| Resolution | 1204×768 | | | |
| Magnification | 2×/4×/8×/16× | | | |
| Color palette | Rainbow, White hot, black hot, Hot metal, yellow saturated, bird watching | | | |
| Language | Chinese, English | | | |
| Built-in storage | 16G(Support 16G/32G/64G/128G) | | | |
| Battery type | Built-in 18650 battery | | | |
| Battery working time | ≤6 hours | | | |
| Working temperature | -20°C~50°C | | | |
| Storage temperature | -30°C~60°C | | | |
| Waterproof rating | ≤IP66 | | | |
| Impact | ≤1200G | | | |
| Specification | | | | |
| Focus adjustment | >0.3m | >3.0m | >1.5m | >5.0m |
| Detection distance | 25mm | 35mm | 54mm | 75mm |
| Human | ≤1667m | ≤2333m | ≤3600m | ≤5000m |
| Wild boar | ≤1471m | ≤2059m | ≤3176m | ≤4412m |
| Cars | ≤2501m | ≤3500m | ≤5400m | ≤7500m |
| Identification distance | 25mm | 35mm | 54mm | 75mm |
| Human | ≤416m | ≤583m | ≤900m | ≤1250m |
| Wild boar | ≤367m | ≤515m | ≤794m | ≤1103m |
| Cars | ≤626m | ≤875m | ≤1350m | ≤1875m |

TS328

This product is a night and day dual-use infrared night vision instrument, suitable for nature observation, outdoor hunting, searching and rescuing, maritime operating, night time patrolling, personal security, etc.

- Monocular observation, easy to carry forward observation by a single person.
- Multiple parameters and color palette can be set to observe and take photos of the target day and night.



| Model | TS328 | | |
|---------------------|---|--|--|
| Detectortype | Amorphous silicon uncooled infrared focal plane | | |
| Resolution | 384×288 | | |
| Pixel spacing | 17μm | | |
| Wavelength coverage | 8μm~14μm | | |
| Frame rate | 60Hz | | |
| Focusing mode | Manual | | |
| F coefficient | 1 | | |
| Resolution | 480×360 | | |
| Magnification | 2×/4×/8×/16× | | |
| Color palette | Rainbow, hot metal, white heat, black heat, yellow saturation, bird watching mode | | |
| Hot spot tracking | Support | | |
| Language | Chinese, English | | |
| Built-in storage | 16G(Support 16G/32G/64G/128G) | | |
| Picture format | JPG | | |
| Battery type | Built-in 2040mAh rechargeable lithium battery (18500 lithium battery) | | |
| Power dissipation | ≤1W (Battery working time: ≤6 hours) | | |
| Working temperature | -20°C~50°C | | |
| Storage temperature | -30°C~60°C | | |
| Waterproof rating | ≤IP54 | | |

Specification

| | Φ8.2mm | Φ9.6mm | Φ8.2mm |
|-------------------------|--------|--------|--------|
| Effective image surface | Φ8.2mm | Φ9.6mm | Φ8.2mm |
| Lens | 25mm | 35mm | 54mm |
| Focus adjustment | >0.3m | >3.0m | >1.5m |
| Objective lens | 25mm | 35mm | 54mm |
| Human | ≤1667m | ≤2333m | ≤3600m |
| Wild boar | ≤1471m | ≤2059m | ≤3176m |
| Cars | ≤2501m | ≤3500m | ≤5400m |
| Human | ≤416m | ≤583m | ≤900m |
| Wild boar | ≤367m | ≤515m | ≤794m |
| Cars | ≤626m | ≤875m | ≤1350m |

TB380/TB680/TBL680

This product is a night and day dual-use infrared night vision instrument, suitable for nature observation, outdoor hunting, searching and rescuing, maritime operating, night time patrolling, personal security, etc.

- Binocular observation, easy to carry forward observation, but also suitable for fixed observation station erection observation



| Model | TB380 | TB680 | TBL680 |
|---------------------------|--|--|---|
| Detectortype | Amorphous silicon uncooled infrared focal plane | Vanadium oxide uncooled infrared focal plane | Amorphous silicon uncooled infrared focal plane |
| Infrared image resolution | 384×288 | 640×512 | 384×288 |
| Pixel spacing | 17μm | 12μm | 17μm |
| Field angle | 7.5°x5.6° | 8.8°x7.0° | 7.5°x5.6° |
| Range | | | 10m~2500m |
| Wavelength coverage | 8μm~14μm | | |
| Lens | 50mm | | |
| NTED | ≤50mk@ 25°C, @ F/1.0 | | |
| Frame rate | ≤50Hz | | |
| Display type | OLED | | |
| Visible image resolution | 1024×768 | | |
| Display size | 0.39 inch | | |
| Image display model | Infrared light/visible light/Combine infrared with visible lights/picture in picture | | |
| Magnification | 1×/2×/4× | | |
| Color palette | White hot, black hot, rainbow, iron red, cold color | | |
| WiFi | 2.4G image transmission | | |
| Battery type | Built-in 18650 battery | | |
| Battery working time | ≥5 hours | | |
| Working temperature | -20°C~70°C | | |
| Storage temperature | -30°C~70°C | | |
| Product size | 193.1x176.8x99mm | | |
| Product weight | 1.5kg (battery included) | | |

Specification

| | TB380 | TB680 | TBL680 |
|-------------------------|-------|--------|--------|
| Detection distance | TB380 | TB680 | TBL680 |
| Human 1.7mx0.5mx0.3m | 3333m | 4722m | 3333m |
| Cars 4.5mx2.0mx1.5m | 8823m | 12500m | 8823m |
| Identification distance | TB380 | TB680 | TBL680 |
| Human 1.7mx0.5mx0.3m | 833m | 1180m | 833m |
| Cars 4.5mx2.0mx1.5m | 2205m | 3215m | 2205m |

TS3325/TS3354/TS3675

Infrared thermal imagers have important applications in many fields such as medical treatment, public security, fire protection, archaeology, transportation, agriculture and geology.

- High pixel, easy to operate, strong shock resistance.
- Monocular observation, easy to carry forward observation by a single person



| Model | TS3325 | TS3354 | TS3675 |
|---------------------------|---|--|---------|
| Infrared image resolution | 384×288 | 384×288 | 640×512 |
| Pixel spacing | 17μm | 12μm | 12μm |
| Detector type | Amorphous silicon uncooled infrared focal plane | Vanadium oxide uncooled infrared focal plane | |
| Wavelength coverage | 8μm~14μm | | |
| Focusing mode | Manual | | |
| NETD | ≤40mk@25°C, @ F/1.0 | | |
| Frame rate | ≤50Hz | | |
| Display type | OLED | | |
| Visible image resolution | 1440×1080 | | |
| Magnification | 1×-16× | | |
| Color palette | White hot, Black hot, Fire hot, Rainbow, Iron red, Cold color | | |
| Language | Chinese, English, Russian, German | | |
| Battery type | Built-in 18650 battery | | |
| Working temperature | -20°C~60°C | | |
| Storage temperature | -30°C~70°C | | |
| Product size | 418.61x103.58mm | | |
| Product weight | 1035g | | |

| Specification | | | | |
|------------------------------|-------|-------|--------|--------|
| C21 Detection distance | 25mm | 35mm | 54mm | 75mm |
| Human 1.7mx0.5mx0.3m | 1667m | 2333m | 3600m | 5000m |
| Cars 4.5mx2.0mx1.5m | 4412m | 6176m | 9529m | 13232m |
| Identification distance | 25mm | 35mm | 54mm | 75mm |
| Human 1.7mx0.5mx0.3m | 417m | 583m | 900m | 1250m |
| Cars 4.5mx2.0mx1.5m | 1103m | 1544m | 2382m | 3309m |
| HT-C22/23 Detection distance | 25mm | 35mm | 54mm | 75mm |
| Human 1.7mx0.5mx0.3m | 2361m | 3306m | 5100m | 7083m |
| Cars 4.5mx2.0mx1.5m | 6250m | 8750m | 13500m | 18750m |
| Identification distance | 25mm | 35mm | 54mm | 75mm |
| Human 1.7mx0.5mx0.3m | 590m | 826m | 1275m | 1771m |
| Cars 4.5mx2.0mx1.5m | 1563m | 2188m | 3375m | 4688m |

TS322

This product is a night and day dual-use infrared night vision instrument, suitable for nature observation, outdoor hunting, searching and rescuing, maritime operating, night time patrolling, personal security, etc.

- High pixel, easy to operate, strong shock resistance.
- Monocular observation, easy to carry forward observation by a single person.



| Model | TS322 |
|--------------------------------------|---|
| Detector type | Amorphous silicon uncooled infrared focal plane |
| Resolution | 384×288 |
| Pixel spacing | 17μm |
| Wavelength coverage | 8μm~14μm |
| NETD | ≤40mk@25°C, @ F/1.0 |
| Frame rate | ≤50Hz |
| Focusing mode | Manual |
| Lens | 25mm, 35mm, 54mm, 75mm |
| Field angle | 10.7°×8° |
| Type | OLED |
| Resolution | 1440×1080 |
| Size | 0.39 inch |
| Magnification | 1×/2×/4×/8× |
| Color palette | White hot, Black hot, Fire hot, Rainbow, Iron red, Cold color |
| Hot spot tracking/Picture in picture | Support |
| Picture/Video | Support |
| Language | Chinese, English |
| Built-in storage | Built-in 16 eMMC |
| Picture format | JPG |
| Video format | MP4 |
| Battery type | Built-in 18650 battery |
| Power dissipation | ≤2W |
| Battery working time | ≥4 hours |
| Working temperature | -20°C~+60°C |
| Storage temperature | -30°C~+70°C |
| Waterproof rating | IP66 |

TS320

This product is a night and day dual-use infrared night vision instrument, suitable for nature observation, outdoor hunting, searching and rescuing, maritime operating, night time patrolling, personal security, etc.

- High pixel, easy to operate, strong shock resistance.
- Monocular observation, easy to carry forward observation by a single person.

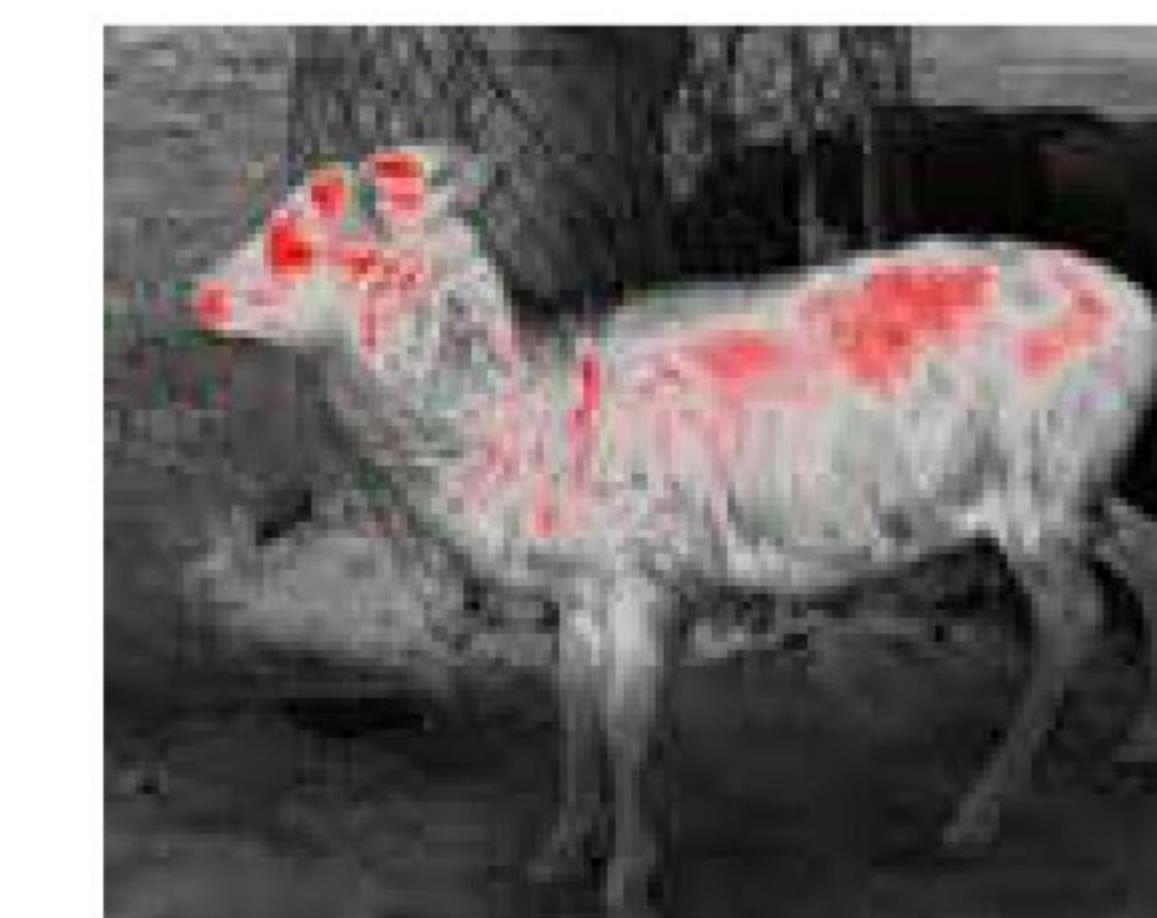


| Model | TS320 |
|--------------------------------------|--|
| Detectortype | Uncooled focal plane |
| Resolution | 384×288 |
| Pixel spacing | 17μm |
| Wavelength coverage | 8μm~14μm |
| NETD | <50mk |
| Frame rate | 50Hz |
| Focusing mode | Manual |
| Lens | 25mm, 35mm, 54mm, 75mm |
| Field angle | 14.9°×11.2°; 10.7°× 8° |
| Type | OLED |
| Resolution | 1280×960 |
| Size | 0.39 inch |
| Magnification | 2×/4× |
| Color palette | White hot, black hot, Hot metal, saturated yellow, bird watching |
| Hot spot tracking/Picture in picture | Support |
| Picture/Video | Support |
| Languag | Chinese, English |
| Built-in storage | Built-in 128G |
| Picture format | JPG |
| Video format | MP4 |
| Battery type | Built-in 18650 battery |
| Power dissipation | ≤1.5W |
| Battery working time | ≥5h |
| Working temperature | 0°C~45°C |
| Storage temperature | -20°C~60°C |
| Waterproof rating | IP66 |

TM326/TM336/TM636

This product is a night and day dual-use infrared night vision instrument, suitable for nature observation, outdoor hunting, searching and rescuing, maritime operating, night time patrolling, personal security, etc.

- Infrared image resolution 384*288/640*512
- Frame rate 50Hz



| Model | TM326 | TM336 | TM636 |
|---------------------------|--|--|--|
| Detectortype | Amorphous silicon uncooled infrared focal plane | Vanadium oxide uncooled infrared focal | Vanadium oxide uncooled infrared focal plane |
| Infrared image resolution | 384×288 | 384×288 | 640×512 |
| Pixel spacing | 17μm | 12μm | 12μm |
| Wavelength coverage | 8μm~14μm | | |
| Infrared lens focus | 25mm, 35mm | | |
| NETD | <40mk(50Hz,F/1,300K)TFPA25°C(±5°C) | | |
| Frame rate | 50Hz | | |
| Focusing mode | Manual | | |
| Eyepiece magnification | 12.5× | | |
| Diaplaytype | LCOS | | |
| Visible image resolution | 1280×960 | | |
| Display size | 0.4 inch | | |
| Magnification | 2×/4× | | |
| Color palette | White hot, black hot, rainbow, hot metal, yellow saturation and bird watching mode | | |
| Language | Chinese, English | | |
| Battery type | Built-in 18650 battery | | |
| Battery working time | ≥5.5 hours | | |
| Working temperature | -20°C~50°C | | |
| Storage temperature | -30°C~60°C | | |
| Waterproof rating | ≤IP65 | | |
| Product size | 187x67x67mm | | |
| Product weight | 503g±5g | | |

| Specification | | |
|-------------------------|--------|--------|
| Detection distance | 25mm | 35mm |
| Human | ≤1667m | ≤2333m |
| Wild boar | ≤1471m | ≤2059m |
| Cars | ≤2501m | ≤3500m |
| Identification distance | 25mm | 35mm |
| Human | ≤416m | ≤583m |
| Wild boar | ≤367m | ≤515m |
| Cars | ≤626m | ≤875m |

TM325/TM335

This product is a night and day dual-use infrared night vision instrument, suitable for nature observation, outdoor hunting, searching and rescuing, maritime operating, night time patrolling, personal security, etc.

- High pixel, easy to operate, strong shock resistance.
- Monocular observation, easy to carry forward observation by a single person.



| Model | TM325 | TM335 |
|---------------------------|--|----------------------|
| Infrared image resolution | 384×288 | 256×192 |
| LCD Resolution | 720×540 | 720×540 |
| Detector type | Uncooled focal plane | Uncooled focal plane |
| Frame rate | 50Hz | 25Hz |
| objective lens | 25mm; 35mm | 6.9mm; 9.7mm |
| Pixel spacing | 17um | 12um |
| NTED | ≤40mK@25°C,@F/1.0 | ≤50mK@25°C,@F/1.0 |
| Field angle | 19.5°×14.7°; 14.9°×11.2°; 10.7°×8° | |
| Eyepiece | Single eyepiece display (dioptic compensation adjustable) | |
| Wavelength coverage | 8~14μm | |
| Language | Chinese, English | |
| Magnification | 2×/4× | |
| Focusing mode | Manual | |
| Picture format | BMP | |
| WIFI | Support | |
| Color palette | White hot, black hot, Hot metal, saturated yellow, bird watching | |
| Battery type | Built-in 26650 battery | |
| USB | Micro USB | |
| Working temperature | -20°C~45°C | |
| Storage temperature | -20°C~60°C | |
| Battery working time | ≥6 hours | ≥4 hours |
| Product size | 187.3×68×68.2mm | 175×69×68mm |
| Product weight | 541.2g | 513g |

TM320/TM330

This product is a night and day dual-use infrared night vision instrument, suitable for nature observation, outdoor hunting, searching and rescuing, maritime operating, night time patrolling, personal security, etc.

- High pixel, easy to operate, strong earthquake resistance.
- Monocular observation, easy to carry forward observation by a single person.



| Model | TM320 | TM256 |
|---------------------------|--|--|
| Infrared image resolution | 384×288 | 256×192 |
| LCD Resolution | 720×540 | 720×540 |
| Detector type | Amorphous silicon uncooled infrared focal plane | Vanadium oxide uncooled infrared focal plane |
| Frame rate | 50Hz | 25Hz |
| objective lens | 25mm; 35mm | 6.9mm; 9.7mm |
| Pixel spacing | 17um | 12um |
| NTED | ≤40mK@25°C,@F/1.0 | ≤50mK@25°C,@F/1.0 |
| Field angle | 19.5°×14.7°; 14.9°×11.2°; 10.7°×8° | |
| Eyepiece | Monocular display (adjustable curvature correction) | |
| Wavelength coverage | 8~14μm | |
| Language | Chinese, English | |
| Magnification | 2×/4× | |
| Focusing mode | Adjustable | |
| Picture format | BMP | |
| WIFI | Support | |
| Color palette | White hot, black hot, Hot metal, saturated yellow, bird watching | |
| Battery type | Built-in 26650 battery | |
| USB | Micro USB | |
| Working temperature | -20°C~45°C | |
| Storage temperature | -20°C~60°C | |
| Battery working time | ≥6 hours | ≥4 hours |
| Product size | 186×69×68mm | 172×69×68mm |
| Product weight | 440g | 420g |

TMF335/TMF635

This product is a night and day dual-use infrared night vision instrument, suitable for nature observation, outdoor hunting, searching and rescuing, maritime operating, night time patrolling, personal security, etc.



| Model | TMF335 | TMF635 |
|------------------------------|--|-------------|
| Infrared image resolution | 384×288 | 640×512 |
| Field angle | 7.5°×5.7° | 12.5°×10.0° |
| Visible image resolution | 1920×1080 | |
| LCD resolution | 1440×1080 | |
| Display size | 0.39 inch | |
| Infrared image Detector type | Vanadium oxide uncooled infrared focal plane | |
| Visible image Detector type | Low illumination CMOS | |
| Lens | 35mm | |
| Frame rate | ≤50Hz | |
| Wavelength coverage | 8~14μm | |
| Pixel spacing | 12μm | |
| NETD | ≤40mk @ 25°C, @F/0.1 | |
| Language | Chinese, Elish | |
| Image display model | Infrared light/visible light/Combine infrared with visible lights/picture in picture | |
| Magnification | 1×/2×/4×/8× | |
| Focusing mode | Manual | |
| Picture/Video format | JPG/MP4 | |
| WIFI | Support | |
| Color palette | White hot, black hot, rainbow, iron, cool, bird watching | |
| Battery type | Removable rechargeable lithium battery | |
| Working temperature | -20°C~60°C | |
| Storage temperature | -30°C~70°C | |
| Battery working time | ≥4 hours | |