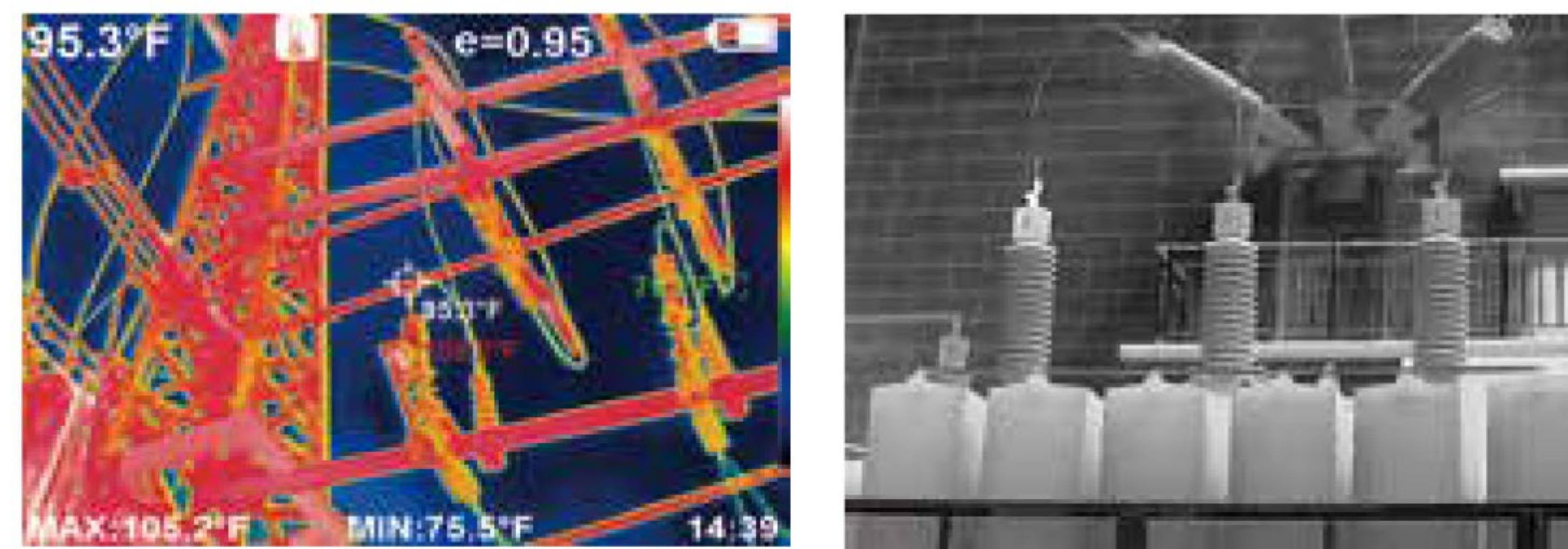




## E384 / E640

Infrared thermal imagers have important applications in many fields such as medical treatment, public security, fire protection, archaeology, transportation, agriculture and geology.

- 3.5-inch full-view TFT display
- Support WIFI
- Infrared image resolution 384\*288
- Frame rate 25Hz



Model	E384	E640	
Displayscreen	3.5"full angle TFT displayscreen	3.5"full angle TFT displayscreen	
Infrared image resolution	384×288	640×512	
LCD resolution	640×480	640×480	
Field angle/focus length	28.4°× 21.4°/ 13mm	32.9°× 26.6°/ 13mm	
I FOV	1.3mrad	1.3mrad	
Pixel spacing	17um		
Frame rate	25Hz/50Hz		
Focusing mode	Manual focus		
NETD	≤60mK@ 25°C,F#1.0		
Wavelength coverage	8~14μm		
Emissivity	Adjustable from 0.01 to 1.0		
Color palette	Rainbow, iron oxide red, cold color, white hot, black hot		
WIFI	Support		
Measuring range	-20°C~550°C (-4°F~1022°F)		
Accuracy	±3%		
Setting	Unit, Language, Date, Time, Information		
Language	Chinese, English, German, Italian		
Storage capacity	Built-in 8G (Actually available 6.6G)		
File format	JPG		
Power interface	Micro USB 2.0		
Specifications			
Battery type	Built-in 26650 battery	Battery capacity	5000mAh
Work temperature	0°C~45°C	Working time	3~4 hours
Storage temperature	-20°C~60°C	Product size	256×97.2×128.9mm
Relative humidity	<85 % RH	Product weight	600g

## E100

Infrared thermal imaging cameras are widely used in many fields such as medical, public security, fire protection, archaeology, transportation, agriculture and geology. It is an ideal choice for electricians and maintenance technicians to quickly locate problem areas.

- Unit, Language, Date, Time, Information
- Wavelength coverage: 8~14μm



Model	E100		
Displayscreen	2.0" color screen		
Infrared image resolution	32×32		
Total pixels	1024		
Field angle/focus length	33°× 33°/ 0.5m		
I FOV	-		
Pixel spacing	-		
Frame rate	5Hz~6Hz		
Focusing mode	Fixed		
NETD	≤50mK@ 25°C,F#1.0		
Wavelength coverage	8~14μm		
Emissivity	0.95		
Color palette	Iron red, white hot		
Measuring range	-20°C~+300°C(-4°F~572°F)		
Accuracy	±2°C/±2%		
Setting	Unit, Language, Date, Time, Information		
Language	Chinese, English		
Storage capacity	1MB		
File format	bmp		
Power interface	Micro USB 2.0		
Specifications			
Battery type	3.7V Li-Ion Battery	Battery capacity	-
Work temperature	-0°C~50°C	Working time	-
Storage temperature	-10°C~+50°C	Product size	165×69×60mm
Relative humidity	<85 % RH	Product weight	135g

### E100



Infrared thermal imaging cameras are widely used in many fields such as medical, public security, fire protection, archaeology, transportation, agriculture and geology. It is an ideal choice for electricians and maintenance technicians to quickly locate problem areas.

- Wavelength coverage: 8~11.5μm
- Field angle/focus length: 33°× 33°/ 0.5m
- Center point/hot and cold spot tracking



Model	E100		
Displayscreen	2.4" color screen		
Infrared image resolution	32×32		
Total pixels	1024		
Field angle/focus length	33°× 33°/ 0.5m		
IFOV	-		
Pixel spacing	-		
Frame rate	6Hz		
Focusing mode	Fixed		
NETD	≤15mK@ 25°C,F#1.0		
Wavelength coverage	8~11.5μm		
Emissivity	Adjustable from 0.01 to 1.0		
Color palette	Rainbow, iron oxide red, cold color, white hot, black hot		
Measuring range	-20°C~+300°C(-4°F~1022°F)		
Accuracy	±2°C/±2%		
Setting	Unit, Language, Date, Time, Information		
Language	English		
Storage capacity	SD card (4G)		
File format	bmp		
Power interface	Micro USB 2.0		
Specifications			
Battery type	4 alkaline AA batteries	Battery capacity	-
Work temperature	-5°C~+40°C	Working time	-
Storage temperature	-20°C~+50°C	Product size	212×95×62mm
Relative humidity	10% RH to 80% RH	Product weight	320g

### E110/E120/E160

Infrared thermal imaging cameras are widely used in many fields such as medical, public security, fire protection, archaeology, transportation, agriculture and geology. It is an ideal choice for electricians and maintenance technicians to quickly locate problem areas.

- 2.8-inch full-view TFT display
- Wavelength coverage: 8~14μm



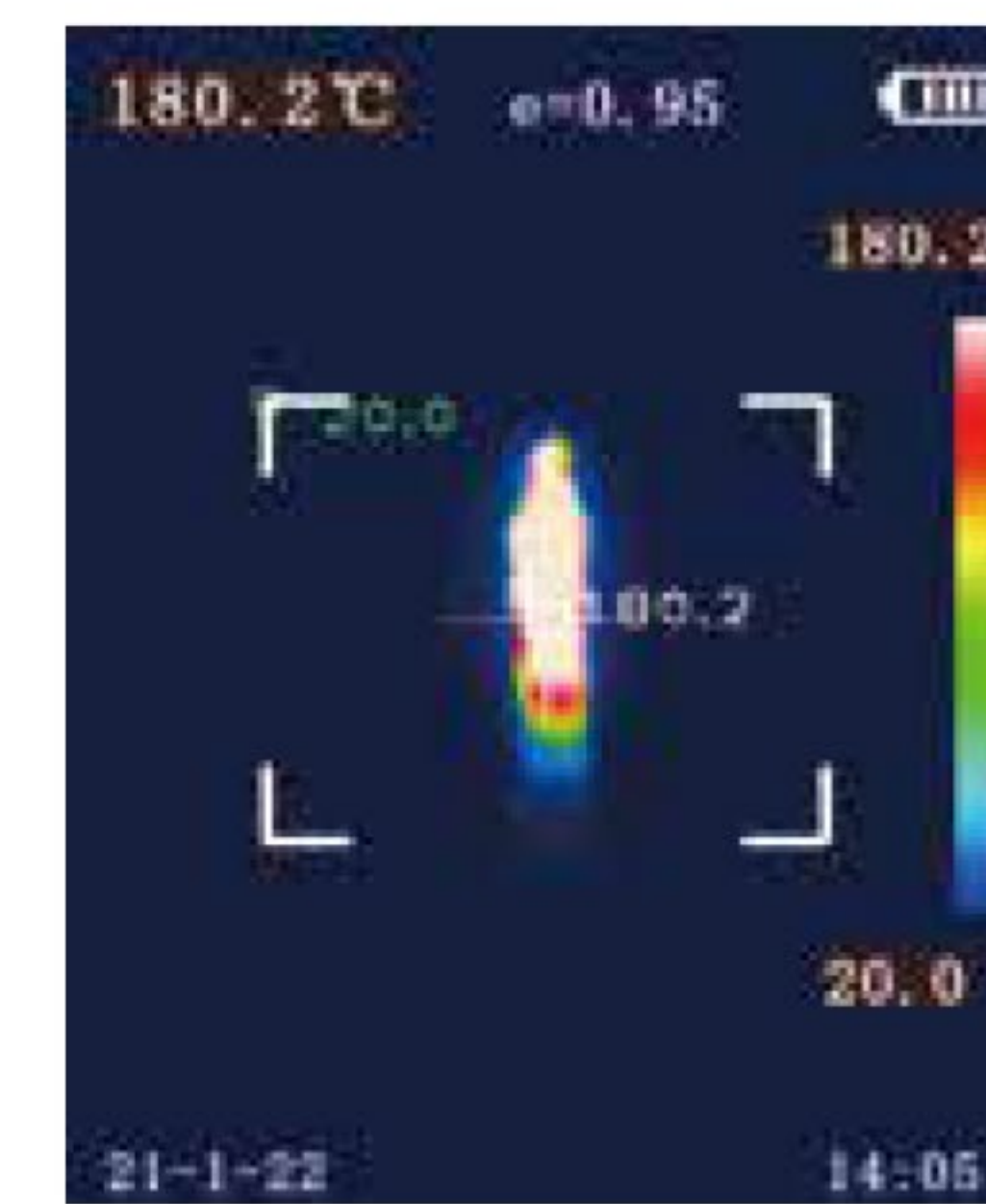
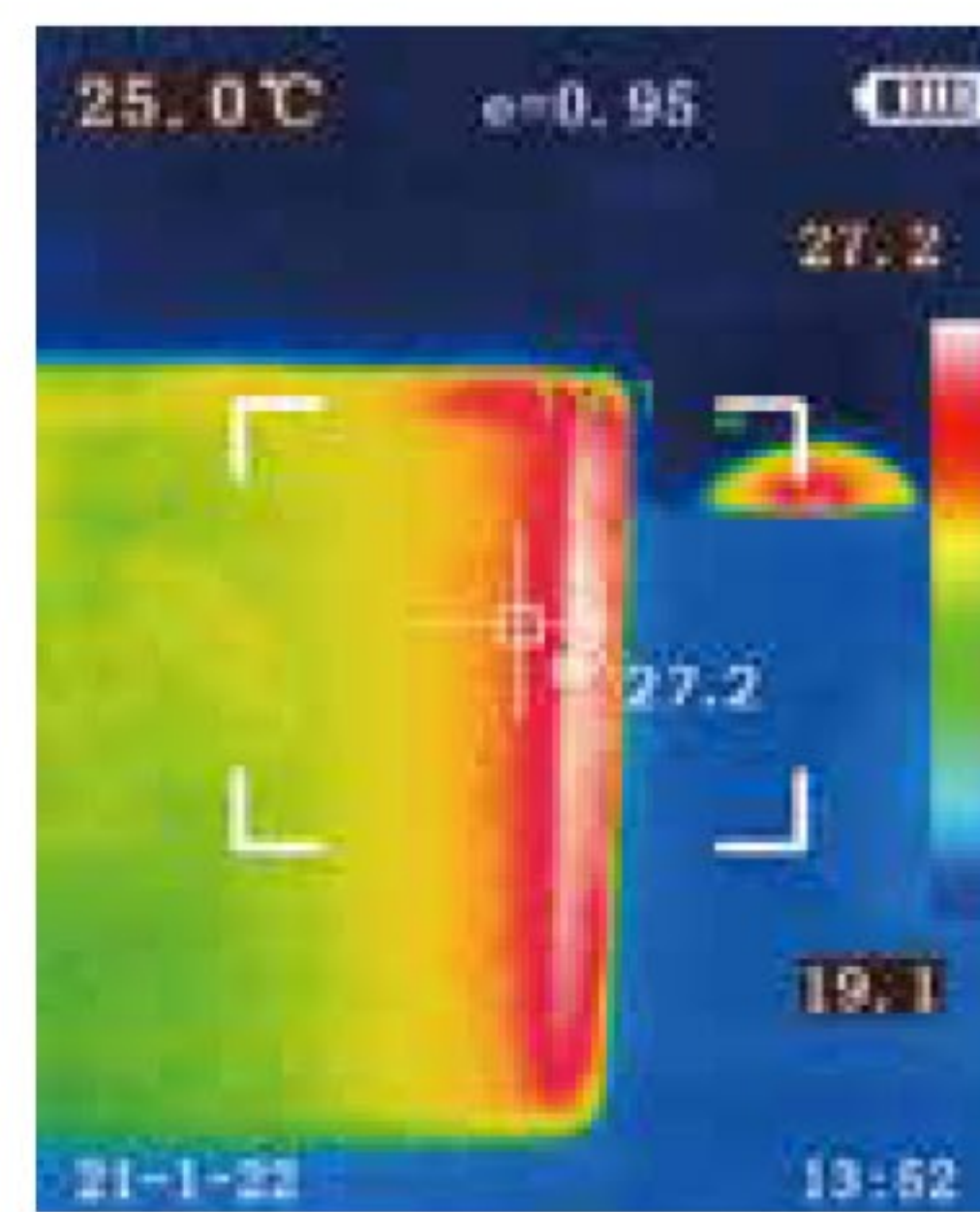
Model	E120	E110	E160
Displayscreen	2.8" TFT displayscreen	2.8" TFT displayscreen	2.8" TFT displayscreen
Infrared image resolution	120×90	80×60	160×120
Visible image resolution	640×480	640×480	640×480
LCD resolution	320×240	320×240	320×240
Field angle/focus length	26°× 19°/3.2mm	17°× 13°/3.2mm	35°× 26°/3.2mm
IFOV	3.75mrad		
Pixel spacing	12μm		
Frame rate	25Hz		
Focusing mode	Fixed		
NETD	≤50mK@ 25°C,@ F/1.1		
Wavelength coverage	8~14μm		
Emissivity	Adjustable from 0.01 to 1.00		
Color palette	Rainbow, iron oxide red, cold color, white hot, black hot		
Measuring range	-20°C~+550°C(-4°F~1022°F)		
Accuracy	-15°C~550°C ±2°C~±2%; -20°C~-15°C ±4°C		
Setting	Unit, Language, Date, Time, Information		
Language	Chinese, English, German, Italian		
Storage capacity	Built-in 4G eMMC (user available storage space is about 3G)		
File format	JPG/MP4		
Power interface	Micro USB 2.0		
Specifications			
Battery type	Built-in 18650 battery	Battery capacity	2000mAh
Work temperature	0°C to +45°C (32 °F to 113 °F)	Working time	2~3 hours
Storage temperature	-20°C to +60°C (-4°F to 140°F)	Product size	96×72×226mm
Relative humidity	10% to 85%RH (non-condensing)	Product weight	375g



### E310

Infrared thermal imaging cameras are widely used in many fields such as medical, public security, fire protection, archaeology, transportation, agriculture and geology. It is an ideal choice for electricians and maintenance technicians to quickly locate problem areas.

- Support WiFi
- Software analysis & Video
- High pixel resolution 256\*192

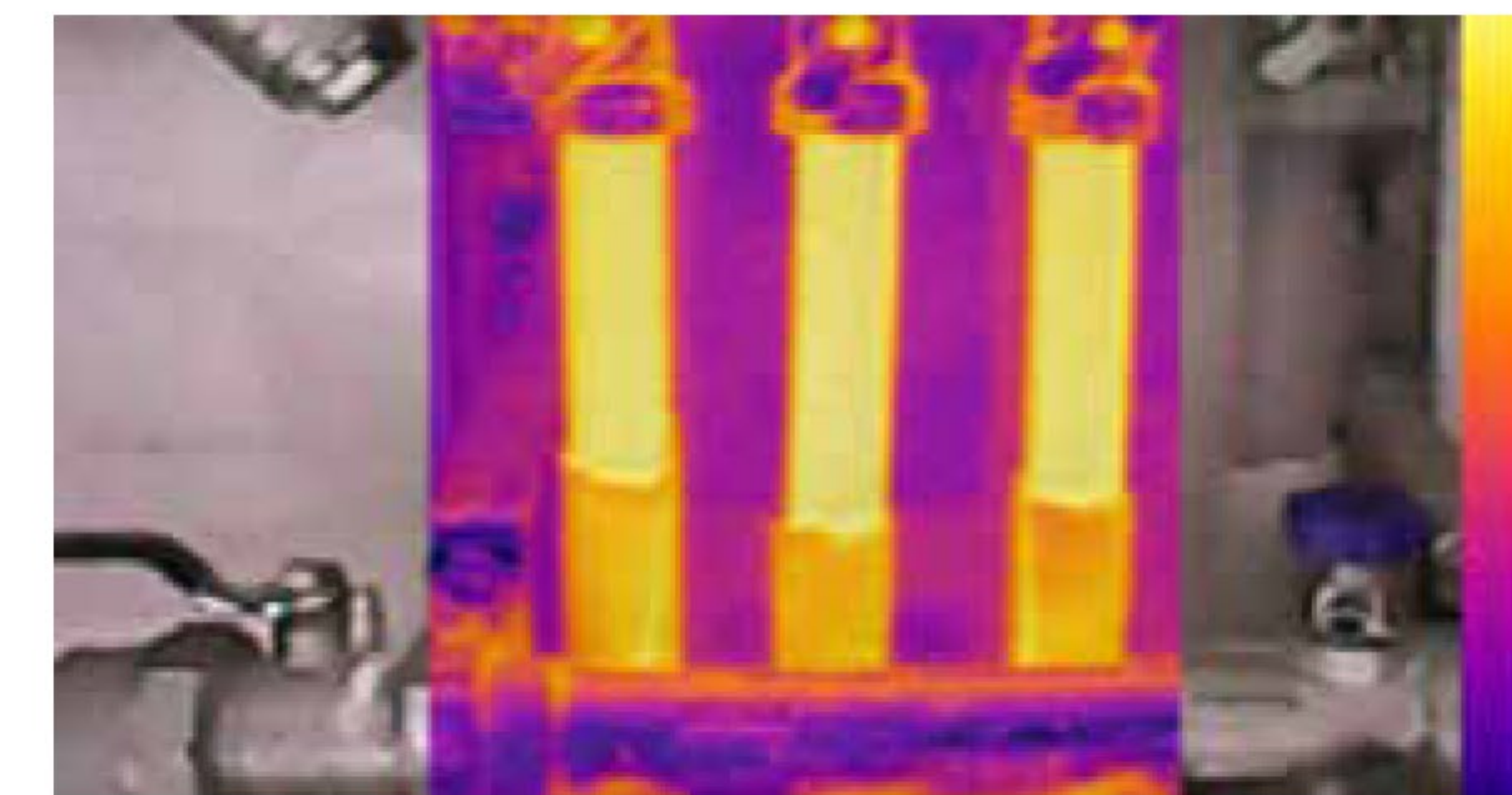


Model	E310	E3256	
Displayscreen	2.8"full angle TFT displayscreen	3.5"full angle TFT displayscreen	
Infraredimage resolution	256×192		
Visible image resolution	640×480		
LCD resolution	320×240		
Field angle/focus length	56°× 42°/ 3.2mm		
I FOV	3.75mrad		
Pixel spacing	12μm		
Frame rate	25Hz		
Focusing mode	Non-heating fixed focus lens		
NETD	≤50mK@ 25°C,F#1.0		
Wavelengthcoverage	8~14μm		
Emissivity	Adjustablefrom 0.01 to 1.0		
Color palette	Rainbow, iron, cold color, white hot, black hot		
Softwareanalysis & Video	Support		
Measuring range	-20°C~+550°C(-4°F~1022°F)		
Accuracy	±2°C or ±2%		
Setting	Unit, Language, Date, Time, Information		
Language	Chinese, English, German, Italian		
Storage capacity	Built-in 4G eMMC (user available storage space is about 3G)		
Specifications			
File format	JPG/MP4	Power interface	Micro USB 2.0
Battery type	Built-in Lithium battery	Battery capacity	2000mAh
Work temperature	0°C to +45°C (32 °F to 113 °F)	Working time	2~3 hours
Storage temperature	-20°C to +60°C (-4°F to 140°F)	Product size	HT-06: 96×72×226mm HT-A10: 96×72×226mm
Relative humidity	10% to 85%RH (non-condensing)	Product weight	HT-06: 375g HT-A10: 588g

### E320

Infrared thermal imaging cameras are widely used in many fields such as medical, public security, fire protection, archaeology, transportation, agriculture and geology. It is an ideal choice for electricians and maintenance technicians to quickly locate problem areas.

- 3.2-inch full-view TFT display
- Wavelength coverage: 8~14μm



Model	E320		
Displayscreen	3.2"full angle TFT displayscreen		
Infraredimage resolution	256×192		
Visible image resolution	640×480		
LCD resolution	320×240		
Field angle/focus length	56°× 42°/ 3.2mm		
I FOV	3.75mrad		
Pixel spacing	12μm		
Frame rate	≤25Hz		
Focusing mode	Fixed		
NETD	≤50mK@ 25°C,F#1.0		
Wavelengthcoverage	8~14μm		
Emissivity	Adjustablefrom 0.01 to 1.0		
Color palette	Rainbow, iron oxide red, cold color, white hot, black hot		
Softwareanalysis & Video	Support		
Measuring range	-20°C~+550°C(-4°F~1022°F)		
Accuracy	-15°C~550°C(±2°C/±2%);-20°C~-15°C(±4°C)		
Setting	Unit, Language, Date, Time, Information		
Language	Chinese, English, German, Italian		
Storage capacity	Built-in 4G eMMC (user available storage space is about 3G)		
Specifications			
File format	JPG/MP4	Power interface	Micro USB 2.0
Battery type	Built-in 18650 battery	Battery capacity	2200mAh
Work temperature	-10°C~ 50°C	Working time	2~3 hours
Storage temperature	-20°C~+60°C	Product size	90×105×223mm
Relative humidity	10% to 85%RH (non-condensing)	Product weight	389g

### E220/E240

Infrared thermal imaging cameras are widely used in many fields such as medical, public security, fire protection, archaeology, transportation, agriculture and geology. It is an ideal choice for electricians and maintenance technicians to quickly locate problem areas.

- 3.2-inch full-view TFT display
- Wavelength coverage: 8~14μm

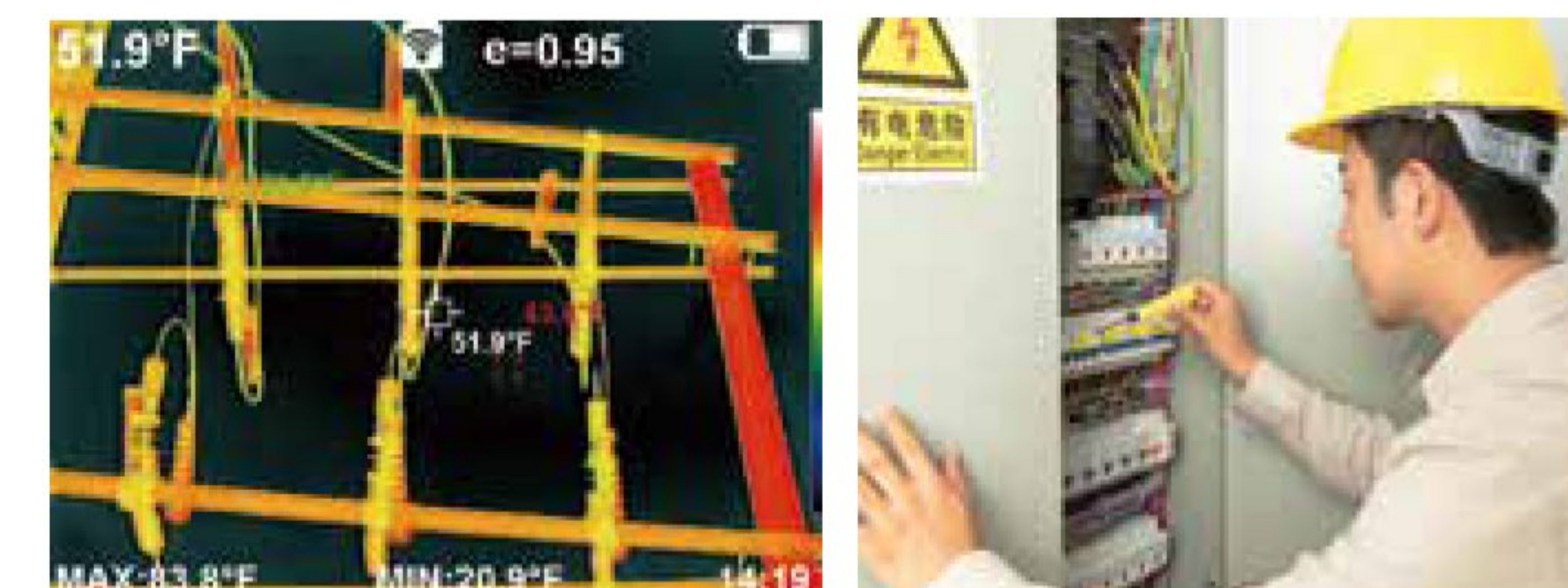


Model	E220	E240
Display screen	3.2"TFT displayscreen	3.2"TFT displayscreen
Infrared image resolution	220×160	320×240
Visible image resolution	640×480	640×480
LCD resolution	320×240	320×240
Field angle/focus length	35°× 26°/ 4.0m	56°× 42°/4.0m
Frame rate	9Hz	
IFOV	3.0mrad	
Pixel spacing	12um	
Focusing mode	Fixed	
NETD	≤70mK@ 25°C,F#1.0	
Wavelength coverage	8~14μm	
Emissivity	Adjustable from 0.01 to 1.0	
Color palette	Rainbow, iron oxide red, cold color, white hot, black hot	
Software analysis & Video	Support	
Measuring range	-20°C~300°C (-4°F~572°F) ;	
Accuracy	±2°C/±2%	
Setting	Unit, Language, Date, Time, Information	
Language	Chinese, English, German, Italian	
Storage capacity	Built-in 3G (above 20 thousand image stored)	
Specifications		
File format	JPG/MP4	Power interface MicroUSB 2.0
Battery type	Built-in 18650 battery	Battery capacity 2000mAh
Work temperature	-10°C~+45°C	Working time 2~3 hours
Storage temperature	-20°C~+60°C	Product size 90×105×223mm
Relative humidity	<85% RH	Product weight 389g

### E300/E400

Infrared thermal imagers have important applications in many fields such as medical treatment, public security, fire protection, archaeology, transportation, agriculture and geology.

- Support WIFI
- 3.5-inch full-view TFT display
- Infrared image resolution 320\*240



Model	E300	E400
Display screen	3.5"full angle TFT displayscreen	3.5"full angle TFT displayscreen
Infrared image resolution	220×160	320×240
Visible image resolution	640×480	640×480
LCD resolution	640×480	640×480
Field angle/focus length	35°× 27°/ 4.0mm	56°× 42°/ 4.0mm
IFOV	3.0mrad	3.0mrad
Pixel spacing	12um	
Frame rate	9Hz	
Focusing mode	Fixed	
NETD	≤70mK@ 25°C,F#1.0	
Wavelength coverage	8~14μm	
Emissivity	Adjustable from 0.01 to 1.0	
Color palette	Rainbow, iron oxide red, cold color, white hot, black hot	
Software analysis & Video	Support	
WIFI	Support	
Measuring range	-20°C~450°C (-4°F~842°F)	
Accuracy	≤100°C ±2°C;100-300°C ±2%;≥300°C ±3%; ≥400°C ±10%	
Setting	Unit, Language, Date, Time, Information	
Language	Chinese, English, German, Italian	
Storage capacity	Built-in 8G (Actually available 6.6G)	
File format	JPG	
Power interface	Micro USB 2.0	
Specifications		
Battery type	Built-in 26650 battery	Battery capacity 2200mAh
Work temperature	-10°C~+50°C	Working time 2~3 hours
Storage temperature	-20°C~+60°C	Product size 90×105×223mm
Relative humidity	<85% RH	Product weight 389g