

ESD Control Solution

## 上海立诺实业有限公司 SHANGHAI LEENOL INDUSTRIAL CO., LTD.

### SHANGHAI HEAD OFFICE

No. 129, 822 Lane, Zhennan Road, Putuo District,  
Shanghai, China  
Tel: +86-21-36030087, 36030089  
Fax: +86-21-36030089-816  
E-mail: sales@leenol.com

### THAILAND

No.177 Moo4, Sawangfa-Naklua road, Naklua,  
Banglamung, Chonburi P.C.: 20150  
Tel: +66-033-641800  
Fax: +66-033-641800  
E-mail: info@leenolesd.com

### GUANGZHOU BRANCH

R5315 , East Crown Building, NO. 620, Xingnan Rd.,  
Nancun Town, Panyu District, GZ  
Tel: +86-20-39951010  
Fax: +86-20-39167036

### HUNGARY

H-2220 Vecsés  
Vágóhíd u.19.  
Hungary, Europe  
Tel: +36-29-550-940  
Fax: +36-29-356-480  
E-mail: info@leenolesd.com

### BEIJING BRANCH

No.54 Shunren Road, Shunyi District, Beijing China 10  
1300  
Tel: +86-10-59429575  
Fax: +86-10-89419834

### HONGKONG STATNOL TECHNOLOGY CO., LIMITED

RM. 1205 12/F, TAI SANG BANK BUILDING,  
130-132 DES VOEUX RD., CENTRAL HONGKONG  
E-mail: info@leenol.com

上海立诺实业有限公司

LEENOL ESD TOTAL SOLUTION 专业防静电涂装制造通商

2021版

## ESD Products

Petrochemical Industry ,Aerospace Industry,Food Industry ,  
Electronic Industry,Biopharming Industry,Automobile Industry



## SHANGHAI LEENOL INDUSTRIAL CO., LTD 上海立诺实业有限公司



## 关于我们 ABOUT US

LEENOL 是一家专业设计、研发、生产及销售安装的防静电系统工程企业。公司系列产品均按 IEC61340-5-1 和 ANSI/ESD-20.20 国际标准和国家标准进行生产，产品材料经过 SGS 检测，符合 RoHs 标准。公司系列产品生产严格按照 ISO9001 质量管理体系，被广泛应用于电子、军工、制药、半导体贴装技术、石化、食品等行业。

公司产品种类包括：LeeRack™ 系列周转储存装备类，如防静电料架、周转箱、周转车、防静电车和网片货架等；LeePak™ 防静电包装材料类，如防静电屏蔽袋、防潮铝箔袋等；LeeBench™ 系列电子车间及实验室工作台、工作椅、地板地垫等；LeePPE™ 防静电人体防护类产品，如防静电工作服、手套、防静电鞋、安全鞋等；LeePur™ 无尘室用品，如无尘布、粘尘垫、无尘口罩类等；以及 LeeStat™ 测试仪器及工具，如离子风机、人体综合测试仪、办公用品等。总计超过 200 多种系列产品，为电子及半导体，汽车电子及其它相关行业提供最全面的防静电和无尘室系统工程解决方案。

LEENOL 公司技术实力雄厚，可承接各类防静电工程设计和施工。销售网络以上海为中心，遍及全国各地。产品远销海外，高质量产品广受全球如东南亚、南美、北美、欧洲及中东国家客户欢迎。

LEENOL is a "Total Solution" company to fulfill ESD requirements for factories and labs. LEENOL's product range covers LeeRack™ Handling Storage ESD Equipments, LeePak™ Packing Material, LeeBench™ Factory and Lab Furniture, LeePPE™ Personal Protection, LeePur™ Cleanroom Product and LeeStat™ Testing Equipment and Tools etc. Such as ESD Magazine Racks, ESD Trolley, Tote box, Packing Bags, and Shielding Film, ESD Workbench with Table Mats, ESD Chairs, ESD Clothes, Shoes, ESD Masks, Cleanroom Wiper. We are agent of ESD Ionizing Equipments, ESD Inspector and Testers, and so on. More than 200 types products are provided to customer request.

LEENOL has its market office based in Shanghai city, including the International Trade Department with importing and exporting right. Our customers are widely distributed in Southeast Asia, Europe, Americas and Middle East etc. LEENOL has its manufacturing bases in Shanghai and Zhejiang Province, and also have many cooperative OEM enterprises in China. High Quality products are well accepted by global customers and end users.

LEENOL's products are made in accordance with IEC61340-5-1 and ANSI / ESD -20.20, and are strictly produced according to ISO 9001 system, SGS and ROHS standards. And LEENOL could also provide user designed products with high quality and short lead time.

We are also sincerely looking for global distributors and partners. We hope to make win-win success and grow together with you.



## LEENOL 系列产品应用领域 LEENOL PRODUCT APPLICATION



## 资质证明 CERTIFICATE



LeePak™

- 4 防静电袋和膜 ESD Bag and Film
- 7 防静电泡绵 ESD Foam
- 8 防静电胶带和标签 ESD Tape and Label
- 9 吸塑片材及托盘 Blister Sheet and Tray
- 10 导电纸箱 Conductive Carton Box
- 11 PP中空板及箱 PP Corrugated Sheet and Box

LeeRack™

- 12 防静电周转箱和元件盒 ESD Bins and Tray
- 14 防静电 SMT 上下料架 ESD SMT Magazine Rack
- 19 防静电周转架 ESD Circulation Rack
- 21 防静电周转车 ESD Circulation Trolley, Cart
- 22 防静电线网架和线网车 ESD WIRE SHELF and Trolley
- 25 SMT智能电子料架 SMT INTELLIGENT ELECTRONIC RACK
- 27 SMT感应式智能电子料架  
SMT INDUCTION TYPE INTELLIGENT ELECTRONIC RACKSMT INDUCTION TYPE INTELLIGENT ELECTRONIC RACK
- 28 智能点料机 INTELLIGENT COUNTING MACHINE

LeeBench™

- 29 防静电PVC地板 ESD PVC FLOOR
- 31 防静电门禁系统 ESD Access Control System
- 33 防静电工作台 ESD Workbench
- 35 工具柜 Tool Cabinet
- 36 防潮柜 Dry Cabinet
- 37 防静电椅子 ESD Chair
- 41 防静电抗疲劳地垫 ESD Anti-fatigue Mat
- 42 防静电台垫 ESD Table Mat

LeePPE™

- 43 防静电腕带 ESD Wrist Strap
- 44 防静电服 ESD Clothes
- 47 防静电鞋 ESD Shoes
- 48 防静电手套 ESD Glove

LeePur™

- 49 粘尘垫 Sticky Mat
- 50 粘尘滚筒 Sticky Roller
- 51 无尘布 Cleanroom Wiper
- 52 手指套一次性鞋套/口罩 Disposable Shoe Cover/Face Mask

LeeStat™

- 53 防静电刷子 ESD Brush
- 54 防静电镊子 ESD Tweezer
- 55 防静电办公用品 ESD Office Supplies
- 56 离子风机 Ionizing Air Blower
- 57 测试仪器 Testing Equipment

LeePak™ 包装材料

LeePak™ PACKING MATERIAL

防静电屏蔽袋

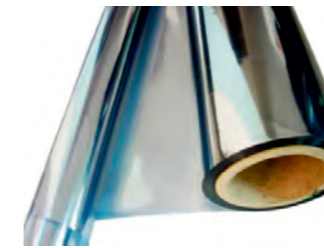
Anti-static Shielding Bag

- 型号 : LN-1507011
- 可以保护静电敏感元器件免受潜在静电的危害。
- 半透明，方便清楚的辨认袋内物品。
- 定制尺寸和封口方式。
- 可以定制印刷。
- Model: LN-1507011
- Keep sensitive electronic devices away from potential static damage.
- Translucent, can easily recognize the goods in side.
- Size and sealing type can be customized.
- Printing is optional.



材料 :

Material:



袋子 :

Bags:



静电特性 Electrical Properties:			
项目 Item	单位 Unit	指标 Typical Value	标准 Standards
表面电阻 Surface resistivity	Ω	<10e11 Ω	ASTM D257 / ANSI/ESD STM11.11
内部 Interior		10e9-10e11 Ω	
外部 Exterior		10e8-10e10 Ω	
金属层电阻 Metalized Layer resistance	Ω	<100	
金属层光传输 Metalized Layer light transmission		40%	Tobias
静电屏蔽 Static Shielding	volts	< 30	MIL-PRF-81705, EIA 541
静电屏蔽 Static Shielding	nJ	< 10	EOS/ESD S11.31
静电衰退 Static Decay	5000-0V	<0.05s	MIL-PRF-81705, FTMS 101 MTH 4046
电容量释放值 Capacitance probe	ELA541	<10V	

物理特性 Physical Properties:			
项目 Item	单位 Unit	指标 Typical Value	标准 Standards
抗拉强度 Tensile Strength	Lbs	>18	ASTM D 882
开始破裂 Tear Initiation	Lbs./in	>2.5	
抗穿刺强度 Puncture resistance	p.s.l	>100	
接缝强度 Seam strength		Pass	MIL-PRF-81705
阻拦 MVTR MVTR barrier	Gm/100min-2/24hrs	<0.2	
阻氧 Oxygen barrier	Cc/100min-2/24hrs	<0.5	
热封条件 Heat Sealing Conditions	F	250-375	
温度 Temperature	S	0.5-3.5	
时间 Time		30-70	
压力 Pressure	p.s.l		
厚度 Thickness	mils	3	

### 防潮铝箔袋

#### Moisture-barrier Bag/ESD Alum.Foil Bag

- 型号：LN-1507012
- 可以保护静电敏感元器件免受潜在静电的危害。
- 柔韧结构方便真空密封。
- 定制尺寸和封口方式。
- 可以定制印刷。
- Model: LN-1507012
- Keep sensitive electronic devices away from potential static damage.
- Flexible structure is easy to vacuum seal.
- Size and sealing type can be customized.
- Printing is optional.



材料：  
Material:



袋子：  
Bags:

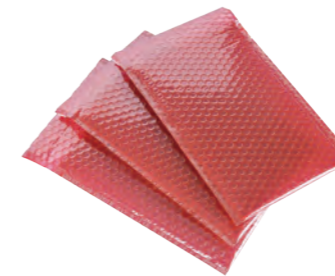


物理特性 (检测方法) Physical Property (Test Method)		指标 Typical Value
厚度 Thickness	MIL-STD-3010 1003	6mils(150µm ±10%)
抗拉强度 Tensile strength	ASTM D882	6000 PSI
开始破裂 Tear strength	ASTM D 1004-66 Notched	≥3 lbs
抗穿刺强度 Puncture Strength	MIL-STD-3010 2065	≥22 lbs
热封强度 Hot sealing strength	Mil PRF 81705D	≥20 lbs
水蒸气透过量 Moisture-vapor transmission	( ASTM F-1249@100° F/100sq in/24hrs )	≤0.0003 gms
热封条件 Hot sealing condition:		
温度 Temperature		150°C - 200°C
时间 Time		0.6 - 4.5s
压力 Pressure		30 - 70 PSI
静电特性 (测试方法) Static Property (Test Method)		指标 Typical Value
静电屏蔽 Static shielding	Mil-PRF-81705,EIA 541 or EOS/ESD STM11.31	< 20 V or < 10 nJ
静电耗散 Static decay	MIL-STD-3010 4046	< 0.03s
表面电阻 Surface resistance	ASTM D257 or ANSI/ESD S11.11	< 1.0 * 10e12 ohms/sqm or < 1.0 * 10e11 Ω

### 屏蔽膜复合气泡袋

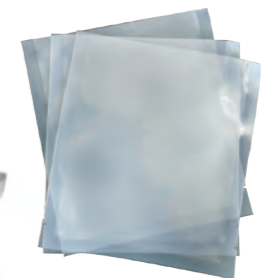
#### ESD shielding composite bubble bags

- 型号:LN-1507011C
- 用于较轻产品和一般要求产品的包装
- 表面阻值:10<sup>8</sup>-10<sup>11</sup>Ω.
- Model: LN-1507011C
- Used for light products and low-demand packaging.
- Surface resistance: 10<sup>8</sup>-10<sup>11</sup>Ω.



### 尼龙真空袋 Nylon Vacuum Bag

- 型号：LN-1507013
- 材质 NY/CPE 或 PET/NY/CPE。
- 抽真空效果好，透明度高，透氧率底，防潮性能好，抗拉强度和耐刺强度高。
- 定制尺寸。
- 可以定制印刷。
- Model: LN-1507013
- Material NY/CPE or PET/NY/CPE.
- Well vacuumed, high transparency, low oxygenation rate, good moisture-proof performance and strong puncture strength.
- Size can be customized.
- Printing is optional.



### 防静电粉红 PE 袋 ESD Pink PE Bag

- 型号：LN-1507014
- 材质 LDPE + LLDPR + 抗静电母粒+色粒+稳定剂。
- 手感柔和，颜色厚度可调节。定制尺寸。
- 表面电阻：10<sup>8</sup>-10<sup>11</sup>Ω.

- Model: LN-1507014
- Material: LDPE + LLDPR + Antistatic Master Batch + Color Master Batch + stabilizing agent.
- Soft touch feeling, free adjustment of color and thickness. Size can be customized.
- Surface resistance: 10<sup>8</sup>-10<sup>11</sup>Ω.

### 导电黑色 PE 袋 Conductive Black PE Bag

- 型号：LN-1507016
- 由 LDP,抗气剂和特导电黑构成。
- 表面电阻：≤10<sup>6</sup>Ω.
- Model: LN-1507016
- It is made from blow molding of mixture of LDPE, anti-capitacion agent and super conductive carbon black.
- Surface resistance: ≤10<sup>6</sup>Ω.



项目 Items	技术参数 Technical Data	
	防静电 Antistatic	普通型 Normal
型号 Model	LN-1507018	LN-1507018N
颜色 Color	粉色 Pink	白色, 黑色 White, Black
密度 Density	20kg/m <sup>3</sup>	
体积电阻 Volume Resistivity	10 <sup>8</sup> —10 <sup>11</sup> Ω·cm	-



项目 Items	技术参数 Technical Data	
	导电型 Conductive	防静电型 Antistatic
型号 Model	LN-1507019A	LN-1507019B
颜色 Color	黑色 Black	黑色 Black
表面电阻 Surface Resistivity	10 <sup>3</sup> —10 <sup>8</sup> Ω	10 <sup>6</sup> —10 <sup>9</sup> Ω
体积电阻 Volume Resistivity	10 <sup>3</sup> —10 <sup>6</sup> Ω·cm	10 <sup>6</sup> —10 <sup>9</sup> Ω·cm

项目 Item	技术参数 Technical Data		
	导电型 Conductive	半导体型 Semi-conductive	耗散型 Dissipative
型号 Model	LN-1507020A	LN-1507020S	LN-1507020DB LN-1507020DP
颜色 Color	黑色 Black	黑色 Black	粉色 Pink
密度 Density	25-27Kg/m <sup>3</sup>	25-27Kg/m <sup>3</sup>	25-27Kg/m <sup>3</sup>
表面电阻 Surface Resistivity	10 <sup>3</sup> —10 <sup>6</sup> Ω	10 <sup>6</sup> —10 <sup>9</sup> Ω	10 <sup>9</sup> —10 <sup>11</sup> Ω
体积电阻 Volume Resistivity	10 <sup>3</sup> —10 <sup>6</sup> Ω·cm	10 <sup>6</sup> —10 <sup>9</sup> Ω·cm	10 <sup>9</sup> —10 <sup>11</sup> Ω·cm



项目 Items	技术参数 Technical Data	
	导电型 Conductive	防静电 Antistatic
型号 Model	LN-1507032A	LN-1507032B
颜色 Color	黑色 Black	黑色 Black
密度 Density	80-100Kg/ m <sup>3</sup>	
体积电阻 Volume Resistivity	10 <sup>3</sup> —10 <sup>6</sup> Ω·cm	10 <sup>6</sup> —10 <sup>9</sup> Ω·cm

型号 Model	印刷 Printing	材质 Material	常规尺寸 Normal Size
LN-1507021A	CAUTION	PVC	48mm*22m
LN-1507021B	ESD Protected Area	PE	50mm*33m



型号 Model	材质 Material	厚度 Thickness	常规尺寸 Normal size
LN-1507023	PVC	0.13mm	48mm*22m
最大宽度 Max Width	常规颜色 Normal Color		
1250mm	Yellow/Black, Red/White, Green/White, Blue/White Yellow, Red, Green, Blue, etc		
最小宽度 Min.Width	可根据客户需求定制任何宽度、长度(Any width and length can be customized according to customer requirements)		
10mm	最小起订量: 200卷(MOQ:200rolls)		

型号 Model	材质 Material	厚度 Thickness	阻值 Resistance	长度 Length	宽度 Width
LN-1507024	OPP	2.5Mil	10 <sup>8</sup> Ω-10 <sup>10</sup> Ω	36m	3mm-980mm



型号 Model	材质 Material	厚度 Thickness	阻值 Resistance	长度 Length	宽度 Width
LN-1507025	BOPP	2.5Mil	10 <sup>7</sup> Ω-10 <sup>10</sup> Ω	36m	3mm-980mm

型号 Model	材质 Material	尺寸 Size	备注 Remark
LN-1507026A	Paper	45mm*45mm	尺寸和内容可定制
LN-1507026B	Paper	55mm*25mm	Size and Words can be customized



LN-1507026A

LN-1507026B



型号 Model	材质 Material	厚度 Thickness	阻值 Resistance	长度 Length	最大宽度 Mix. Width
LN-1507027A	Polyimide	0.055mm	-	33m	500mm
LN-1507027B	Polyimide	0.06mm	10 <sup>5</sup> Ω-10 <sup>8</sup> Ω	33m	500mm

型号 Model	LN-1513200
材质 Material	PVC, PP, PS, PE, HIPS and so on
阻值 Resistance	$10^9$ - $10^{11}\Omega$ , $10^6$ - $10^8\Omega$ , $10^3$ - $10^5\Omega$
尺寸 Size	可定制 Customized
服务 Service	接受 OEM,ODM. Accept OEM,ODM.



采用德国先进万能吸塑机器，使自动调节用料的宽度，电脑自动储存生产数据，使得吸塑包装品质稳定。公司可以提供专业的防静电，导电包装吸塑，医疗吸塑，及无尘室用无菌吸塑等。

目前防静电材料根据抗静电值分为：导电，半导体及防静电

- 导电：表面阻值为 3-5 次方。
- 半导体：表面阻值为 6-9 次方。
- 防静电：9-11 次方。

Using advanced Blister vacuum forming machine, It makes the blister packing quality stable and keep production data as well. Based on advanced technology, we could offer professional vacuum packing for electronics factories, medical and cleanrooms.

Currently, ESD blister Material can divide into 3 type according to the resistance reading:

- Conductive:  $10e3$ - $10e5 \Omega$
- Semi conductive:  $10e6$ - $e10e9 \Omega$
- Dissipative:  $10e9$ - $10e11 \Omega$



LN-1513201 Conductive Blister Slots



LN-1513202 Conductive Blister Slots



LN-1513203 Antistatic Blister tray



LN-1513204 Dissipative Vacuum tray



LN-1513205 Conductive Vacuum tray



LN-1513206 Cleanroom Vacuum tray

- 材料：纸板+导电/防静电配方油墨
- 防静电型： $10^6$ - $10^9 \Omega$
- 导电型： $10^3$ - $10^5 \Omega$
- 根据客户要求，可定制任何尺寸，形状。
- 用途：电子厂，元器件厂，汽车及配件厂，等等

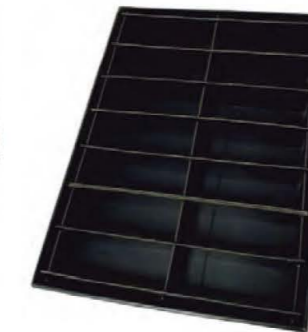
- Material: Paper board + Conductive/Antistatic special oil ink
- Antistatic type:  $10^6$ - $10^9 \Omega$
- Conductive type:  $10^3$ - $10^5 \Omega$
- Any size, shape can be customized according to customer request.
- Application: widely used in electronic factories, components factories, automobile and spare parts etc.



型号 Model	LN-1513100
颜色 Color	黑色 Black
表面电阻 Surface Resistance	$10^4$ — $10^9\Omega$
尺寸 Size	非标尺寸可定制 Non-standard size can be customized
类型 Type	A Flute, B Flute, AB Flute, E Flute, BE Flute



LN-1513101



LN-1513102



LN-1513103



型号 Model	LN-1513300
厚度 Thickness	2mm, 3mm, 4mm, 5mm
阻值 Resistance	10 <sup>6</sup> -10 <sup>9</sup> Ω, 10 <sup>4</sup> -10 <sup>6</sup> Ω
尺寸 Size	可定制 Customized
颜色 Color	黑色, 灰色, 绿色, 蓝色, 白色, 红色, 等。 Black, grey, green, blue, white, red, and so on.

\*只有黑色可以做防静电或导电。  
\*Only black color can be conductive or dissipative.



LN-1513301



LN-1513302



LN-1513303



LN-1513304



LN-1513305



LN-1513306

中空板配件 Accessories for Making Box

①下箱角	②上箱角	③塑料把手	④金属把手	⑤边条
①Bottom Plastic Corner	②Top Plastic Corner	③Plastic Handles	④Metal Handles	⑤Side Frame



- 注塑成型。
- 材料：PP。
- 用途：电子产品的储存和运输。
- 表面电阻：10<sup>3</sup>-10<sup>9</sup> Ω。
- 可内置中空板格挡。
- 可配注塑箱盖或中空板箱盖以达到防尘的目的。
- 可印刷，可堆垛。
- 以下尺寸仅供参考，更多的尺寸请联系我们。

- Molding Injection
- Material: PP compound.
- Usage: to store and transportation electronics components, PCBs, and so on.
- Surface resistance: 10<sup>3</sup>-10<sup>9</sup> Ω
- ESD corrugated divider can be matched inside.
- Corrugated cover or molded cover is available to prevent dust.
- It can print LOGO, stacking.
- Below size for reference. More size please contact us.



型号 Model	外径 Ext.dim.mm (L×W×H)	内径 Int.dim.mm (L×W×H)	型号 Model	外径 Ext.dim.mm (L×W×H)	内径 Int.dim.mm (L×W×H)
*LN-1526132	615x430x320	580x395x310	*LN-1524928	495x370x285	465x345x275
*LN-1526125	615x430x250	580x395x245	*LN-1524922	495x370x230	465x345x220
*LN-1526120	615x430x200	580x395x195	*LN-1524916	495x370x165	465x345x160
*LN-1526115	615x430x150	580x395x145	*LN-1524912	495x370x125	465x345x120
*LN-1526540	600x500x400	560x460x390	*LN-1524328	400x300x280	365x265x275
*LN-1526535	600x500x355	560x460x350	*LN-1524323	400x300x230	365x265x220
*LN-1526530	600x500x305	560x460x300	*LN-1524317	400x300x170	365x265x165
*LN-1526525	600x500x255	560x460x250	*LN-1524315	400x300x148	365x265x135
*LN-1526516	600x500x160	560x460x155	*LN-1524312	400x300x120	365x265x115
*LN-1526434	600x400x340	565x365x330	LN-1523215	300x200x148	265x165x135
*LN-1526428	600x400x280	565x365x270	LN-1523212	300x200x120	265x165x115
*LN-1526423	600x400x230	565x365x220	LN-1526941	690x485x410	650x450x400
*LN-1526417	600x400x170	565x365x160	LN-1527418	700x450x180	665x415x170
*LN-1526415	600x400x148	565x365x137	LN-1526544	650x440x350	610x400x340
*LN-1526412	600x400x120	565x365x110	LN-1526640	660x400x165	620x365x160
*LN-1525438	545x425x380	510x390x370	LN-1525426	540x415x260	500x380x250
*LN-1525430	545x425x305	510x390x300	LN-1524817	480x350x175	440x320x165
*LN-1525424	545x425x240	510x390x230	LN-1524215	420x310x150	380x280x145
*LN-1525415	545x425x150	510x390x145	LN-1523613	360x270x135	320x240x125

型号 Model	外径 Ext.dim.mm (L×W×H)	内径 Int.dim.mm (L×W×H)	型号 Model	外径 Ext.dim.mm (L×W×H)	内径 Int.dim.mm (L×W×H)
LN-1525030	500x310x300	465x270x290	LN-1524822	480x355x220	445x318x210
LN-1522150	510*345*185	464*300*175	LN-1524832	480x355x320	445x318x310
LN-1522132	720x560x380	680x515x370	LN-1522136	560x430x145	515x350x140
*LN-1522127	580x368x200	535x345x195	LN-1522137	585x405x175	538x360x170
*LN-1522128	580x368x165	535x345x155	LN-1522138	530x370x205	490x330x200

备注：\*表示可以配盖子。 Notes：\* Lid cover optional



型号 Model	外径 Ext.dim.mm (L×W×H)	内径 Int.dim.mm (L×W×H)	配套周转箱型号
LN-1524635	540x390x15	465x350x15	LN-1524928/4922/4916/4912
LN-1525839	640x440x15	580x390x15	LN-1526132/6125/6120/6115
LN-1526050	610x505x15	600x500x15	LN-1526540/6535/6530/6525/6516
LN-1526040	600x400x15	565x365x10	LN-1526434/6428/6423/6417/6415/6412
LN-1525139	575x440x15	510x390x15	LN-1525438/5430/5424/5415
LN-1524030	400x300x10	365x265x10	LN-1524328/4323/4317/4315/4312



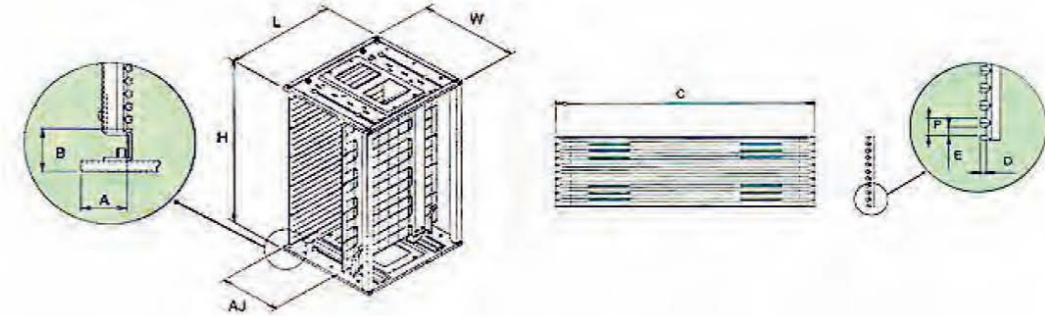
型号 Model	外径 Ext.dim.mm (L×W×H)	内径 Int.dim.mm (L×W×H)
LN-1522108	450x300x60	430x280x50
LN-1522108A	450x300x45	430x280x38
LN-1522118	440x290x50	400x265x45
LN-1522121	375x250x65	345x225x60
LN-1522122	440x295x80	410x265x75
LN-1522123	560x375x75	525x330x70
LN-1522126	315x230x43	300x215x37
LN-1522133	480x328x42	445x292x35
LN-1522135	615x420x95	570x370x90
LN-1522140	226x166x29	214x154x25
LN-1522141	289x195x26	274x183x23
LN-1522142	315x290x29	136x58x20



型号 Model	外形尺寸 Contour Size(mm)	内尺寸 Inner Size(mm)	样式 Type
No.1	95x105x50	80x95x40	Hanging
No.2	165x95x70	148x86x60	Hanging
No.3	175x105x80	158x95x70	Hanging
No.4	200x130x90	180x113x80	Hanging
No.5	223x155x120	215x140x112	Hanging
No.6	130x125x65	110x105x55	Hanging
No.8	400x117x90	360x92x80	8 grids Can be divided
No.9	400x235x90	360x210x80	8 grids Can be divided
型号 Model	外形尺寸 Contour Size(mm)	内尺寸 Inner Size(mm)	样式 Type
H1	104x104x49	88 x87 x40	Hanging
H2	140x122x68	125 x109 x65	Hanging
H3	180x121x79	150x100 x76	Vertical
H4	253x155x125	210 x132 x115	Vertical
H5	352x201x143	303 x175 x135	Vertical



- LEENOL 防静电料架可以快速调节宽度，以适用不同的 PCB 尺寸规格。
- 高分子防静电材料制成，50 条槽。
- 部分防静电料架可耐高温高达 200 度左右。
- LEENOL 防静电料架适用于任何机型设备，符合国标。
- LEENOL 防静电料架符合 RoHS 标准。
- Smooth-Width adjustment using our patented rack & pinion system.
- ESD Safe plastic card guides, 50 slots.
- Heat-resistant card guides for board temperature up to 200°C.
- Compatible with all brands of equipment.
- Leenol Rack is RoHS compliance.



型号 Model No.	#1 底板 Base	#2 调节方式 AJ Method	#3 温度 Temp	外形 Outer Dimension				侧板插槽 Card Guide				参考位置 Ref. Position		槽数 Slots	重量 Wight (kg)
				L	W	H	AJ	C	D	E	P	A	B		
LN-A801	P	Screw Adjust.	80°C	355	315	580	80-250	353	4.5	7.0	10	34	34	50	5
LN-A802	P	Screw Adjust.	80°C	355	315	305	80-250	353	3.5	7.0	10	34	35.5	25	3.4
LN-B803	M	Screw/ Gear Track	80°C	355	320	563	50-250	353	3.0	5.5	10	34	34	50	5
LN-B803HT	M	Screw/ Gear Track	120°C	355	320	563	50-250	353	3.0	5.5	10	34	34	50	5
LN-B803HT200	M	Screw/ Gear Track	200°C	355	320	563	50-250	353	3.0	5.5	10	34	34	50	6
LN-B804	P	Gear Track	80°C	355	320	563	50-250	353	3.0	5.5	10	34	34	50	4.5
LN-B804HT	P	Gear Track	120°C	355	320	563	50-250	353	3.0	5.5	10	34	34	50	4.5
LN-B805	M	Screw/ Gear Track	80°C	355	320	563	50-250	353	3.0	5.5	10	34	34	50	6.5
LN-B805HT	M	Screw/ Gear Track	120°C	355	320	563	50-250	353	3.0	5.5	10	34	34	50	6.5
LN-B806	P	Gear Track	80°C	355	320	563	50-250	353	3.0	5.5	10	34	34	50	6.0
LN-B806HT	P	Gear Track	120°C	355	320	563	50-250	353	3.0	5.5	10	34	34	50	6.0
LN-C807	M	Screw/ Gear Track	80°C	460	400	563	50-330	460	4.0	5.5	10	34	34	50	8.0
LN-C807HT	M	Screw/ Gear Track	120°C	460	400	563	50-330	460	4.0	5.5	10	34	34	50	8.0
LN-C807HT200	M	Screw/ Gear Track	200°C	460	400	563	50-330	460	4.0	5.5	10	34	34	50	9.8
LN-C815	M	Screw/ Gear Track	80°C	400	320	563	50-250	400	3.0	5.5	10	34	34	50	6.0
LN-D808	M	Screw/ Gear Track	80°C	535	460	570	50-390	530	4.0	5.5	10	34	37	50	10.5
LN-D808HT	M	Screw/ Gear Track	120°C	535	460	570	50-390	530	4.0	5.5	10	34	37	50	10.5
LN-E809	M	Screw/ Gear Track	80°C	535	530	570	50-460	530	4.0	5.5	10	34	38	50	12.0
LN-E809HT	M	Screw/ Gear Track	120°C	535	530	570	50-460	530	4.0	5.5	10	34	38	50	12.0
LN-F810	M	Screw Adjust.	80°C	630	530	570	50-460	630	3.5	6.5	10	34	37	50	13.0
LN-B811	P	Chain Track	80°C	355	320	560	50-250	353	3.0	4.5	10	34	34	50	6.0
LN-B814	M	Screw/ Gear Track	550°C	355	320	563	80-250	355	3.0	8	10	34	34	50	6.8

- #1 "M" 代表 "金属底板", "P" 代表 "塑料底板".
- #2 "AJ" 标示宽度是齿轮调节或者螺丝调节.
- #1 "M" designates "Metal Base". "P" designates "Plastic Base".
- #2 "AJ" designates the method of adjusting the width using a screw or with gear adjust system.





- 表面电阻： $10^3 - 10^9\Omega$ 。
  - 外形尺寸：(L×W×H)mm: 355×315×580。
  - 可以放 50 片 PCB 板。
  - 适用 PCB 板尺寸 355×(80 - 250)mm。
  - 侧板导向槽：深 3.5mm,宽 7mm 节距 10mm。
  - 上下底板为塑料底板。
  - 固定方式：螺丝调节。
  - 重量：5.0kg。
  - 355×315×305mm 尺寸可选 (LN-A802)
- Surface Resistance:  $10^3 - 10^9\Omega$
  - Contour Size (L×W×H)mm: 355×315×580
  - 50pcs of Plates can be stored
  - The specification of PCB plates: 355×(80 - 250)mm
  - Guide slot of side plate: Depth 3.5mm, Width 7mm, Pitch 10mm
  - Top and bottom Base is plastic base.
  - Fix method: screw adjustable
  - Weight: 5.0KG
  - 355×315×305mm size magazine rack is available (LN-A802).



- 表面电阻： $10^3 - 10^9\Omega$ 。
  - 外形尺寸：(L×W×H)mm: 355×320×563。
  - 可以放 50 片 PCB 板。
  - 适用 PCB 板尺寸 355×(50 - 250)mm。
  - 侧板导向槽：深 3mm,宽 5.5mm 节距 10mm。
  - 上下底板为金属底板。
  - 固定方式：螺丝调节/齿轮调节。
  - 侧板：5 片拼板。
  - 重量：5.0kg。
- Surface Resistance:  $10^3 - 10^9\Omega$
  - Contour Size(L×W×H)mm: 355×320×563
  - 50pcs of Plates can be stored
  - The specification of PCB plates: 355×(50 - 250)mm
  - Guide slot of side plate: Depth 3mm, Width 5.5mm, Pitch 10mm
  - Top and bottom Base is metal base.
  - Fix method: screw or gear track adjustable
  - Side plate: five pieces assembled
  - Weight: 5.0KG



- 表面电阻： $10^3 - 10^9\Omega$ 。
  - 外形尺寸：(L×W×H)mm: 355×320×563。
  - 可以放 50 片 PCB 板。
  - 适用 PCB 板尺寸 355×(50 - 250)mm。
  - 侧板导向槽：深 3mm,宽 5.5mm 节距 10mm。
  - 上下底板为塑料底板。
  - 固定方式：齿轮调节。
  - 侧板：5 片拼板。
  - 重量：4.5kg。
- Surface Resistance:  $10^3 - 10^9\Omega$
  - Contour Size(L×W×H)mm: 355×320×563
  - 50pcs of Plates can be stored
  - The specification of PCB plates: 355×(50 - 250)mm
  - Guide slot of side plate: Depth 3mm, Width 5.5mm, Pitch 10mm
  - Top and bottom Base is plastic base.
  - Fix method: gear track adjustable
  - Side plate: five pieces assembled
  - Weight: 4.5KG



- 表面电阻： $10^3 - 10^9\Omega$ 。
  - 外形尺寸：(L×W×H)mm: 355×320×563。
  - 可以放 50 片 PCB 板。
  - 适用 PCB 板尺寸 355×(50 - 250)mm。
  - 侧板导向槽：深 3mm,宽 5.5mm 节距 10mm。
  - 上下底板为金属底板。
  - 固定方式：螺丝调节/齿轮调节。
  - 侧板：整体板。
  - 重量：6.5kg。
- Surface Resistance:  $10^3 - 10^9\Omega$
  - Contour Size(L×W×H)mm: 355×320×563
  - 50pcs of Plates can be stored
  - The specification of PCB plates: 355×(50 - 250)mm
  - Guide slot of side plate: Depth 3mm, Width 5.5mm, Pitch 10mm
  - Top and bottom Base is metal base.
  - Fix method: screw/gear track adjustable
  - Side plate: whole plates
  - Weight: 6.5KG



- 表面电阻： $10^3 - 10^9\Omega$ 。
  - 外形尺寸：(L×W×H)mm: 355×320×563。
  - 可以放 50 片 PCB 板。
  - 适用 PCB 板尺寸 355×(50 - 250)mm。
  - 侧板导向槽：深 3mm,宽 5.5mm 节距 10mm。
  - 上下底板为塑料底板。
  - 固定方式：齿轮调节。
  - 侧板：整体板。
  - 重量：6.0kg。
- Surface Resistance:  $10^3 - 10^9\Omega$
  - Contour Size(L×W×H)mm: 355×320×563
  - 50pcs of Plates can be stored
  - The specification of PCB plates: 355×(50 - 250)mm
  - Guide slot of side plate: Depth 3mm, Width 5.5mm, Pitch 10mm
  - Top and bottom Base is plastic base.
  - Fix method: gear track adjustable
  - Side plate: whole plates
  - Weight: 6.0KG



- 表面电阻： $10^3 - 10^9\Omega$ 。
  - 外形尺寸：(L×W×H)mm: 460×400×563。
  - 可以放 50 片 PCB 板。
  - 适用 PCB 板尺寸 460×(50 - 330)mm。
  - 侧板导向槽：深 4mm,宽 5.5mm 节距 10mm。
  - 上下底板为金属底板。
  - 固定方式：螺丝调节/齿轮调节。
  - 侧板：5 片拼板。
  - 重量：8.0kg。
  - 铝合金材质侧板可做。(LN-C817)
- Surface Resistance:  $10^3 - 10^9\Omega$
  - Contour Size(L×W×H)mm: 460×400×563
  - 50pcs of Plates can be stored
  - The specification of PCB plates: 460×(50 - 330)mm
  - Guide slot of side plate: Depth 4mm, Width 5.5mm, Pitch 10mm
  - Top and bottom Base is metal base.
  - Fix method: screw or gear track adjustable
  - Side plate: five pieces assembled
  - Weight: 8.0KG
  - Aluminum alloy material side plate is available(LN C817)



LN-D808

- 表面电阻： $10^3 - 10^9\Omega$ 。
  - 外形尺寸： $(L \times W \times H)$ mm: 535×460×570。
  - 可以放 50 片 PCB 板。
  - 适用 PCB 板尺寸 535×(50 - 390)mm。
  - 侧板导向槽：深 4mm,宽 5.5mm 节距 10mm。
  - 上下底板为金属底板。
  - 固定方式：螺丝调节/齿条调节。
  - 侧板 5 片拼板
  - 重量：10.5kg。
  - 铝合金材质侧板可做。(LN-D818)
- Surface Resistance:  $10^3 - 10^9\Omega$
  - Contour Size(L×W×H)mm: 535×460×570
  - 50pcs of Plates can be stored
  - The specification of PCB plates: 535×(50 - 390)mm
  - Guide slot of side plate: Depth 4mm, Width 5.5mm, Pitch 10mm
  - Top and bottom Base is metal base.
  - Fix method: screw or gear track adjustable
  - Side plate: five pieces assembled
  - Weight: 10.5KG
  - Aluminum alloy material side plate is available (LN-D818)



LN-E809

- 表面电阻： $10^3 - 10^9\Omega$ 。
  - 外形尺寸： $(L \times W \times H)$ mm: 535×530×570。
  - 可以放 50 片 PCB 板。
  - 适用 PCB 板尺寸 535×(50 - 460)mm。
  - 侧板导向槽：深 4mm,宽 5.5mm 节距 10mm。
  - 上下底板为金属底板。
  - 固定方式：螺丝调节/齿条调节。
  - 侧板 5 片拼板
  - 重量：12.0kg。
- Surface Resistance:  $10^3 - 10^9\Omega$
  - Contour Size(L×W×H)mm: 535×530×570
  - 50pcs of Plates can be stored
  - The specification of PCB plates: 535×(50-460)mm
  - Guide slot of side plate: Depth 4mm, Width 5.5mm, Pitch 10mm
  - Top and bottom Base is metal base.
  - Fix method: screw or gear track adjustable
  - Side plate: five pieces assembled
  - Weight: 12.0KG



LN-F810

- 表面电阻： $10^3 - 10^9\Omega$ 。
  - 外形尺寸： $(L \times W \times H)$ mm: 630×530×570。
  - 可以放 50 片 PCB 板。
  - 适用 PCB 板尺寸 630×(50 - 460)mm。
  - 侧板导向槽：深 3.5mm,宽 6.5mm 节距 10mm。
  - 上下底板为金属底板。
  - 固定方式：螺丝调节。
  - 侧板 2 片拼板
  - 重量：13kg。
- Surface Resistance:  $10^3 - 10^9\Omega$
  - Contour Size(L×W×H)mm: 630×530×570
  - 50pcs of Plates can be stored
  - The specification of PCB plates: 630×(50-460)mm
  - Guide slot of side plate: Depth 3.5mm, Width 6.5mm, Pitch 10mm
  - Top and bottom Base is metal base.
  - Fix method: screw adjustable
  - Side plate: two pieces assembled
  - Weight: 13KG



LN-B811

- 表面电阻： $10^3 - 10^9\Omega$ 。
  - 外形尺寸： $(L \times W \times H)$ mm: 355×320×560。
  - 可以放 50 片 PCB 板。
  - 适用 PCB 板尺寸 355×(50 - 250)mm。
  - 侧板导向槽：深 3.0mm,宽 4.5mm 节距 10mm。
  - 上下底板为塑料底板。
  - 固定方式：链条调节(4 跟链条同步转动调节及时省时,准确锁紧方便灵活)。
  - 侧板：整体板。
  - 重量：6.0kg。
- Surface Resistance:  $10^3 - 10^9\Omega$
  - Contour Size(L×W×H)mm: 355×320×560
  - 50pcs of Plates can be stored
  - The specification of PCB plates: 355×(50 - 250)mm
  - Guide slot of side plate: Depth 3.0mm, Width 4.5mm, Pitch 10mm
  - Top and bottom Base is plastic base.
  - Fix method: chain adjustable (Four chains can be conveyed at the same time ,It is accurate and efficient to adjust, close conveniently and freely)
  - Side plate: whole plate
  - Weight: 6.0KG



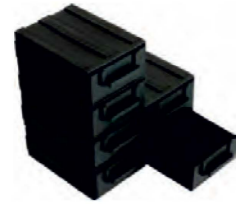
LN-B814

- 铝合金上下料架。
  - 外形尺寸： $(L \times W \times H)$ mm: 355×320×563。
  - 可以放 50 片 PCB 板。
  - 适用 PCB 板尺寸 355×(80 - 250)mm。
  - 侧板导向槽：深 3.0mm,宽 8mm 节距 10mm。
  - 上下底板为金属底板。
  - 固定方式：螺丝调节/齿条调节。
  - 侧板：五片拼板
  - 重量：6.8kg。
- Aluminum alloy SMT Magazine Rack
  - Contour Size(L×W×H)mm: 355×320×563
  - 50pcs of Plates can be stored
  - The specification of PCB plates: 355×(80 - 250)mm
  - Guide slot of side plate: Depth 3.0mm, Width 8mm, Pitch 10mm
  - Top and bottom Base is metal base.
  - Fix method: screw/gear track adjustable
  - Side plate: five pieces assembled
  - Weight: 6.8KG



LN-C815

- 表面电阻： $10^3 - 10^9\Omega$ 。
  - 外形尺寸： $(L \times W \times H)$ mm: 400×320×563。
  - 可以放 50 片 PCB 板。
  - 适用 PCB 板尺寸 400×(50 - 250)mm。
  - 侧板导向槽：深 3mm,宽 5.5mm 节距 10mm。
  - 上下底板为金属底板。
  - 固定方式：螺丝调节/齿条调节。
  - 侧板：五片拼板。
  - 重量：6.0kg。
- Surface Resistance:  $10^3 - 10^9\Omega$
  - Contour Size(L×W×H)mm:400×320×563
  - 50pcs of Plates can be stored
  - The specification of PCB plates: 400×(50 - 250)mm
  - Guide slot of side plate: Depth 3mm, Width 5.5mm, Pitch 10mm
  - Top and bottom Base is metal base.
  - Fix method: screw or gear track adjustable
  - Side plate: five pieces assembled
  - Weight: 6.0KG



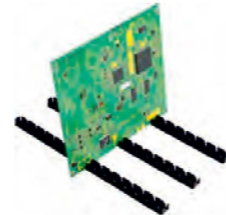
LN-1530C03

防静电抽屉式元件盒  
ESD Component Drawer Box

- 表面电阻： $10^4 - 10^9\Omega$
- 外形尺寸：138×93×46mm
- 内尺寸：127×87×42mm
- 形状：抽屉式，组合型
- Surface Resistance: $10^4-10^9\Omega$
- Contour Size: 138x93x46mm
- Interior Size: 127x87x42mm
- Shape: Drawer type Combination

防静电卡条  
ESD Insert-rack

- 表面电阻： $10^4 - 10^9\Omega$
- 外形尺寸：100×15×14mm
- 槽宽：2.2mm, 1.8mm
- Surface Resistance:  $10^4 - 10^9\Omega$
- Contour Size: 100x15x14mm
- Width: 2.2mm, 1.8mm



LN-1530C04



LN-1530D01

防静电 L 型周转架  
Anti-static Circulation Rack

- 表面电阻： $10^4 - 10^9\Omega$
- 外形尺寸：410×280×165mm
- 使用尺寸：(LxH) 225×140mm
- 可放 38 片 PCB 板
- 槽宽：2.8mm, 槽深：5mm, 间距：10mm
- Surface Resistance: $10^4-10^9\Omega$
- Contour Size: 410x280x165mm
- Use Slot Size: (LxH) 225x140mm
- 38pcs PCB can be stored
- Slot width: 2.8mm, depth:5mm Pitch: 10mm

防静电双面周转架  
Anti-static Circulation Rack

- 表面电阻： $10^4 - 10^9\Omega$
- 外形尺寸：480×140×35mm
- 槽一：2.2 x 4mm 槽二：3x7mm
- 槽三：3x7.2mm 槽距：15mm
- 双面使用，每种槽型可放 25 片 PCB 板
- Surface Resistance: $10^4-10^9\Omega$
- Contour Size: 480x140x35mm
- Slot one: 2.2 x 4mm Slot two: 3x7mm
- Slot three: 3x7.2mm Pitch: 15mm
- Two side can be used, each kind of slot can put 25pcs PCB



LN-1530D02



LN-1530D03

防静电 L 型周转架  
Anti-static Circulation Rack

- 表面电阻： $10^4 - 10^9\Omega$
- 外形尺寸：265×205×95mm
- 使用尺寸：(LxH) 155×75mm
- 槽宽：3.2mm 槽深：5mm 槽距：9mm
- 可放 25 片 PCB 板
- 其他尺寸可供选择
- Surface Resistance: $10^4-10^9\Omega$
- Contour Size: 265x205x95mm
- Use Slot Size: (LxH) 155x75mm
- Width 3.2mm, Depth 5mm, Pitch 9mm
- 25pcs PCB can be stored
- Other size can be provided
- LN-1530D03-2 355x268x128mm
- LN-1530D03-3 270x205x130mm

防静电周转架  
Anti-static Circulation Rack

- 表面电阻： $10^4 - 10^9\Omega$
- 外形尺寸：410×140×22mm
- 槽型：2.8\*5mm, 间距：10mm
- 可存放 PCB 板 42 片
- Surface Resistance: $10^4-10^9\Omega$
- Contour Size: 410x140x22mm
- Slot Size: 2.8\*5mm, pitch: 10mm
- 42pcs PCB can be stored

LN-1530D04-280  
外形尺寸：410x280x22mm

LN-1530D04-280  
Contour Size: 410x280x22mm



LN-1530D04

防静电周转架  
ESD Circulation Rack



LN-1530D05

防静电周转架  
Anti-static Circulation Rack

- 表面电阻： $10^4 - 10^9\Omega$
- 外形尺寸：437×160×30mm
- 槽型(LxH)：3x7mm 节距：16mm
- 可放 25 片 PCB 板
- Surface Resistance: $10^4-10^9\Omega$
- Contour Size: 437x160x30mm
- Slot size: 3x7mm Pitch:16mm
- 25pcs PCB can be stored

防静电周转架  
Anti-static Circulation Rack

- 表面电阻： $10^4 - 10^9\Omega$
- 外形尺寸：485×175×50mm
- 槽型(LxH)：3x7mm 槽型(LxH)：2.2x4mm 节距：16mm
- 可放 25 片 PCB 板
- Surface Resistance: $10^4-10^9\Omega$
- Contour Size: 485x175x50mm
- Slot size: 3x7mm, Slot size: 2.2x4mm
- Pitch:16mm
- 25pcs PCB can be stored



LN-1530D07



LN-1530D08

导电栈板  
Conductive Pallet

- 表面电阻： $10^3 - 10^9\Omega$
- 外形尺寸：1200×1000×145mm
- 材质：HDPE/PP
- 动载：800kgs 静载：2000kgs
- Surface Resistance: $10^3-10^9\Omega$
- Contour Size: 1200x1000x145mm
- Material: HDPE/PP
- Dynamic Load: 800kgs
- Static Load: 2000kgs

防静电周转架  
Anti-static Circulation Rack

- 表面电阻： $10^4 - 10^9\Omega$
- 尺寸：(50-350) × 175 × 355mm
- 槽宽：3.7mm 槽深：4.2mm 节距：10mm 槽数：32
- 可做任何规格
- Surface Resistance: $10^4-10^9\Omega$
- Size: (50-350) x 175x355mm
- Slot Width: 3.7mm, Depth: 4.2mm, Pitch 10mm, Slot qty: 32
- Any specification can be ordered

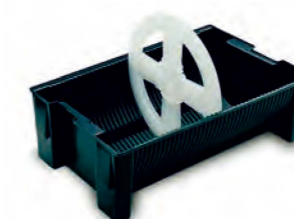


LN-1530D09

SMT 料盘架  
SMT reel box tray



LN-1530D10



LN-1530D11

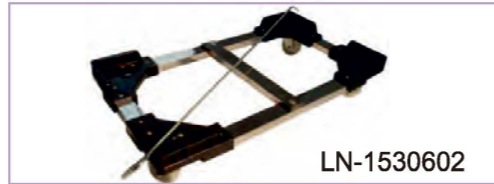


LN-1530D12

型号 Model No.	尺寸 Size	适用料盘直径 Reel Dia.	可放料盘数量 Reel QTY	表面电阻 Surface Resistance
LN-1530D10	410 x 190 x 110mm	170-180mm	26pcs	$10^4-10^9\Omega$
LN-1530D11	450 x 190 x 110mm	170-180mm	30pcs	
LN-1530D12	550 x 350 x 175mm	330-340mm	33pcs	



LN-1530601



LN-1530602

型号 Model	LN-1530601	LN-1530602
表面电阻 Surface Resistance	10 <sup>4</sup> -10 <sup>9</sup> Ω	
承重 Load Capacity	100kgs (200kgs option available)	
外形尺寸 Contour Size	660×480mm/720×520mm	可定制 Can be customized



LN-1530603A



LN-1530603C



LN-1530604

型号 Model	LN-1530603A	LN-1530603C	LN-1530604A	LN-1530604B
尺寸 Size	900×620×1300mm	1100×620×1300mm	950×675×1300mm	900×450×1300mm
活动板宽 Flashboard Width	350mm/460mm/530mm/630mm		515mm	280/350mm
槽宽 Slot width	5mm			5mm
槽深 Depth	4mm			5mm
节距 Pitch	10mm			19mm
槽数/排 Slot NO./row	100		60/120	50/100
侧板结构 Side plate structure	4片拼接 4pcs panel joined		整片板 One whole piece side plate	
调节方式 Adj. method	扳手调节 Handle adjustable	螺丝调节 Screw adjustable	扳手调节 Handle adjustable	
备注 Remark	体积电阻 10 <sup>6</sup> -10 <sup>9</sup> Ω, 尺寸可定制, 增加双面板的数量, 可以放更多的 PCB 板。 Volume resistance: 10 <sup>6</sup> -10 <sup>9</sup> Ω, Any size can be customized according to customer request. adding double flashboard, it can insert more PCBs.			



LN-1530605

型号 Model	LN-1530605
外形尺寸 Contour Size	1000×450×1400mm
表面电阻 Surface Resistance	10 <sup>4</sup> -10 <sup>9</sup> Ω
可放周转架 LN-1530D01 数量 Storing Qty of LN-1530D01	16pcs/20pcs/24pcs
备注 Remark	可定做任何规格 Any specification can be customized

型号	LN-1530608	Model	LN-1530608
原材料	碳钢 Q195-F# 不锈钢 202#/304#	Raw Material	Carbon Steel: Q195-F# Stainless Steel: 202# /304#
表面处理	电镀/电解	Surface Treatment	Electroplate /Electrolytic

线径  
Wire Diameter

- A: Φ4.0mm ~ Φ7.0mm, 常规直径 Normal Dia.: Φ6.0mm
- B: Φ4.0mm ~ Φ7.0mm, 常规直径 Normal Dia.: Φ6.0mm
- C: Φ2.5mm ~ Φ4.7mm, 常规直径 Normal Dia.: Φ3.0mm
- D: Φ3.0mm ~ Φ6.0mm, 常规直径 Normal Dia.: Φ4.5mm



产品介绍  
Products

- DIY 结构自由安装, 空间利用更全面。
- 无需任何工具和专业安装知识即可轻松完成组装工作。
- Structure can be DIY and free installation. It can use space better and free as you need.
- Can be easily assembling even without any tools and expertise.

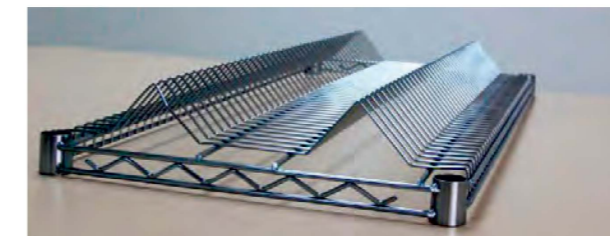
网片类型  
Wire Shelf Type



工业平网  
Industrial Wire Shelf



单峰网  
Single Peak Shelf



双峰网  
Double Peak Shelf



工业平网尺寸 Industrial Wire Shelf Size

宽 Width (mm)	长 Length (mm)	镀铬网片 Chrome-plated Wire Shelves	不锈钢网片 Stainless Steel Wire Shelves	宽 Width (mm)	长 Length (mm)	镀铬网片 Chrome-plated Wire Shelves	不锈钢网片 Stainless Steel Wire Shelves
350	600	C 1424	S 1424	530	900	C 2136	S 2136
	750	C 1430	S 1430		1050	C 2142	S 2142
	900	C 1436	S 1436		1200	C 2148	S 2148
	1050	C 1442	S 1442		1500	C 2160	S 2160
	1200	C 1448	S 1448		1800	C 2172	S 2172
	1500	C 1460	S 1460		600	C 2424	S 2424
450	600	C 1824	S 1824	600	900	C 2436	S 2436
	750	C 1830	S 1830		1050	C 2442	S 2442
	900	C 1836	S 1836		1200	C 2448	S 2448
	1050	C 1842	S 1842		1500	C 2460	S 2460
	1200	C 1848	S 1848		1800	C 2472	S 2472
	1500	C 1860	S 1860		750	900	C 3036
530	600	C 2124	S 2124	1200	C 3048	-	
	750	C 2130	S 2130	1500	C 3060	-	
				1800	C 3072	-	

单/双峰网片尺寸 Single/Double Peak Wire Shelf Size

450mm*900mm	450mm*1200mm
-------------	--------------

安装流程

Assemble Instructions



可选配件

Optional Accessory



脚垫  
Pad

夹片  
Collar

轮子  
Wheels

N型扶手  
N type Handle

U型扶手  
U type Handle

防静电线网车

ESD WIRE SHELF TROLLEY



LN-1530606A

长(L)	24"	26"	36"	42"	48"
宽(W)					
14"	350×600	350×750	350×900	350×1050	350×1200
18"	450×600	450×750	450×900	450×1050	450×1200
21"	530×600	530×750	530×900	530×1050	530×1200
24"	600×600	600×750	600×900	600×1050	600×1200
高(H)	940mm				



LN-1530607

长(L)	24"	30"	36"	42"	48"
宽(W)					
14"	350×600	350×750	350×900	350×1050	350×1200
18"	450×600	450×750	450×900	450×1050	450×1200
21"	530×600	530×750	530×900	530×1050	530×1200
24"	600×600	600×750	600×900	600×1050	600×1200
高(H)	600-2200mm				



LN-1530609

项目 Item	尺寸 Size (mm)	行间距 Line Space(mm)
单峰网 Single Peak	450×900	50
	450×1200	50
双峰网 Double Peak	450×900	20
	450×1200	20
高(Height)	940mm	



LN-1530610

- 托盘车，适用于托盘的储存和运输。
- 尺寸可托盘尺寸定制。
- ESD trolley for trays, suit for store and transport trays.
- Size can be customized according to tray size.

SMT智能电子料架  
SMT INTELLIGENT ELECTRONIC RACK



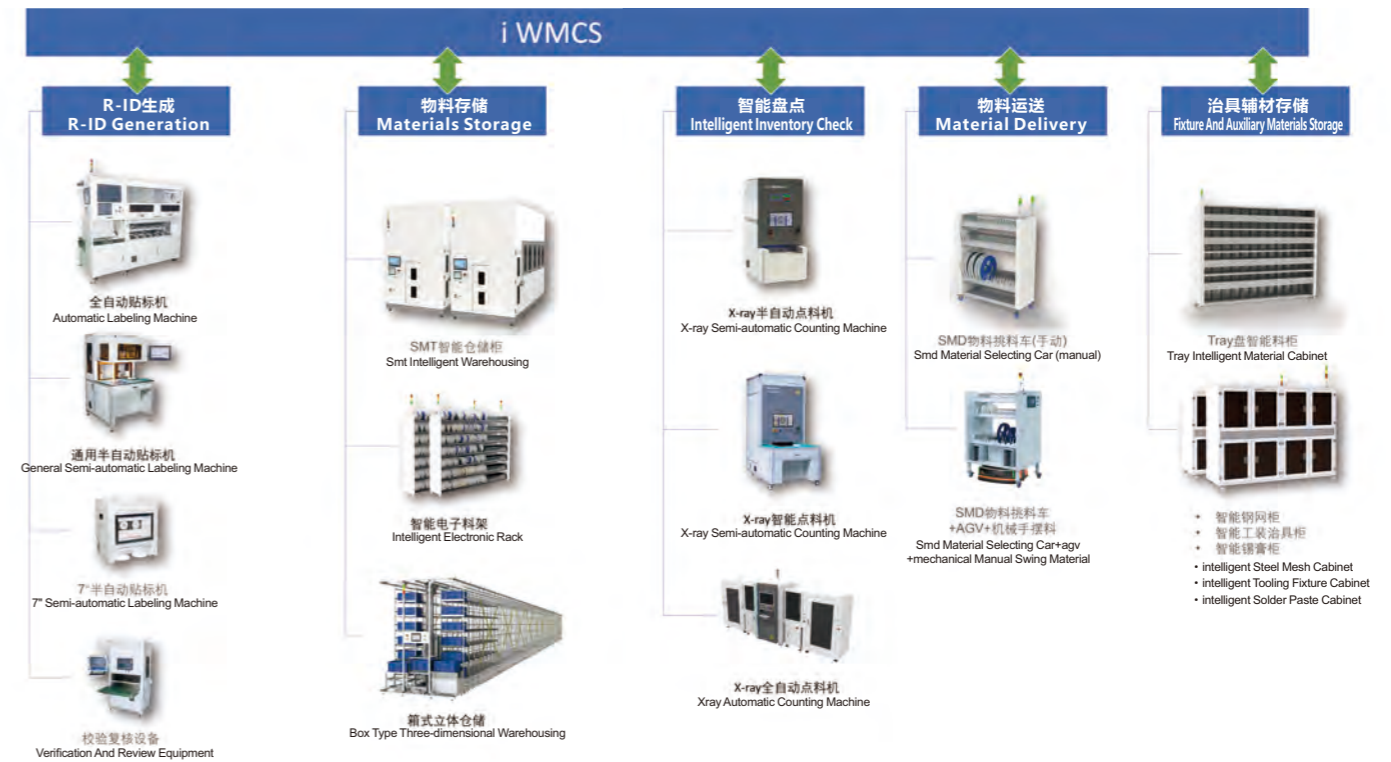
智能电子料架是用于存放SMT贴片器件的高容积率货架。上料时物料按盘依次放入在对应的卡位中，通过料号/卡位的二维码的对应关系绑定货架上的LED指示灯。对接企业的ERP/MES系统自动实现按灯光指示的快速收发料的操作。

- 发料时间从两个小时节省到15分钟，效率提升8倍。
- 每个货架可无序存放1400盘物料，库存面积可节省40% - 每个物料的位置快速可查，盘点时间可从2天减少到2个小时。
- 物料/库位/工单/站位自动绑定，发料和上料过程可防呆防错。

Intelligent Electronic Rack is a high volume rate rack for storing SMT chip components. When material loading, the material is placed in the corresponding slot, which is bound to the LED indicator on the rack according to the corresponding relationship of QR code of the material number /slot. The ERP / MES system of the docking enterprise automatically implements the operation of fast receipt and dispatch of material as the light indicates.

- Material issuing time saves from two hours to 15 minutes, eight times as efficient as before.
- Each rack can be stored in 1400-plate materials, saving 40% of inventory area - the location of each material can be found quickly, and the time to check inventory can be reduced from 2 days to 2 hours.
- to bind materials /storage location/ work order / station automatic, material dispatching and loading process is fool-proof.

SMT智能电子料架  
SMT INTELLIGENT ELECTRONIC RACK

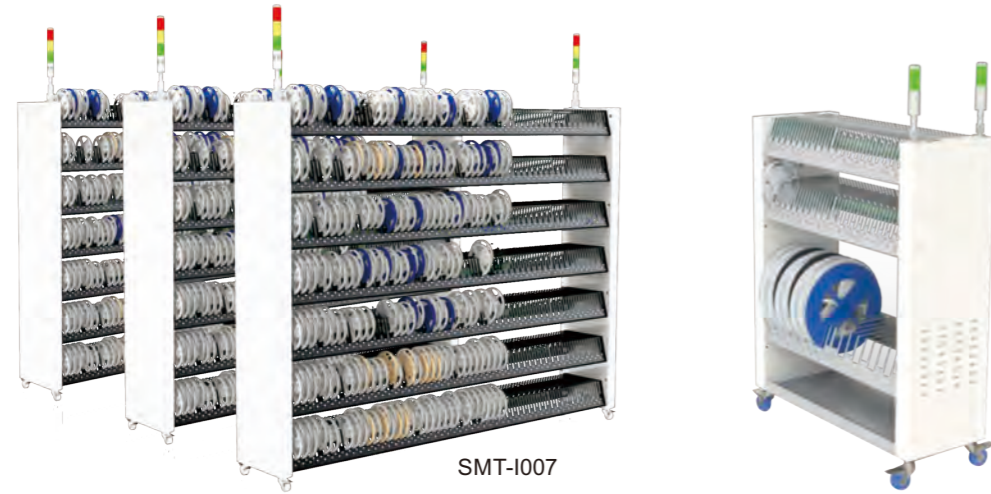


SMT-007	规格
材质	不锈钢
存储类型	可存放7寸料盘,背对背开槽 (也可定制储位类型,如药品,化学原料等小件易混淆物品)
设备尺寸	220cm*41cm *200cm
层数/层站位数	7层/每层200个储位(可定制)
总站位数	1400个/架子(可定制)
工作电压	AC220V
电压方式	支持有线通信和无线通讯



SMT-007	Specifications
material	stainless steel
storage type	can store 7-inch tray, back to back slotting (storage type can be customized, such as medicine, chemical raw materials and other small items that are easily confused)
equipment size	220cm*41cm *200cm
number of layers/standing capacity per layer	7 layers / 200 storage spaces per layer (customizable)
number of standing capacity	1400 pcs per rack (customizable)
working voltage	AC220V
voltage mode	support wired communication and wireless communication

**SMT感应式智能电子料架**  
SMT INDUCTION TYPE INTELLIGENT ELECTRONIC RACKS  
SMT INDUCTION TYPE INTELLIGENT ELECTRONIC RACK



SMT-I007

设备	对接系统	兼容物料	防错机制	储位	动力	尺寸 长*宽*高	其他
感应式电子料架	系统可与任何一家WMS、ERP、MES等对接	7"~17"SMD; 厚度	感应式/二维码	最大1400/7层, 每层200	AC220V (3A)	2200*415*2000	材质、颜色接受定制, 感应物料可实时监控物料出入状态
移动式电子料架		8mm-75mm 可定制	感应式/二维码	80~200个, 可定制	AC220V(2A)	1100*415*1200	支持有线/无线方式通讯

Equipment	docking system	compatible materials	error-proof mechanism	storage location	power	size length * width * height	other
Inductive electronic rack	The system can be docked with any WMS, ERP, MES, etc.,	7"~17"SMD; thickness 8-75mm can be customized.	inductive/QR code	maximum 1400 pcs per 7 layers, 200 pcs per layer	AC220V (3A)	2200*415*2000	the material and color can be customized, and induction materials can monitor material input and output status in real time
Mobile electronic rack			inductive/QR code	80~200 pcs, can be customized	AC220V(2A)	1100*415*1200	support wired/wireless communication

**智能点料机**  
INTELLIGENT COUNTING MACHINE

Leenol智能点料机大幅缩减元器件点料时间以及库存盘点时间，能够快速地为用户提供准确的库存和元器件数量信息。基于光电技术的传统点料设备，需求量大，投入人力多，耗时长。而Leenol智能点料机通过前沿的X光成像技术，只需要几秒钟就可以获得最新的、准确的库存信息。

Leenol intelligent counting machine greatly reduces components counting time and inventory checking time. It can quickly provide users with accurate inventory and component quantity information.

Traditional counting equipment based on photoelectric technology has a large demand with a lot of manpower and long time.

While Leenol intelligent counting machine uses cutting-edge X-ray imaging technology to obtain the latest and accurate inventory information in just a few seconds.

**智能点料机**  
INTELLIGENT COUNTING MACHINE



**X400离线型**  
X400 OFFLINE TYPE

- 手动上下料
- 4盘同时计数
- 元器件01005
- AutoMat技术
- 物料外形自动识别
- 条码模板定制
- 系统对接：提供API和MESWMS/ERP等系统对接
- 工作流程：条码扫描→放入料盘→AutoMAT-结构输出→标签打印→取出料盘
- Manual material loading and unloading
- 4 plates of materials are counted simultaneously
- Components 01005 ·AutoMat technology
- Automatic recognition of material shape ·Customization of barcode template
- System docking: Provide API, MESWMS/ERP, etc. system docking
- Work flow: barcode scanning→put into the tray→AutoMAT-structure output →label printing→take out tray

**X800在线型**  
X800 ONLINE TYPE

- 在线点料机
- 批量入库
- 自动物料对接
- 自动条码识别，支持物料分类和LCR分类
- AutoMat技术，可识别元器件级别至01005
- 自动条码打印，识别物料位置打印标签
- 批量出库，自动分配物料，对接AGV
- Online Counting Machine
- Batch warehousing
- Automatic material docking
- Automatic barcode recognition, support material classification and LCR classification
- AutoMat technology, can identify component level up to 01005
- Automatic barcode printing, identifying material location and printing labels
- Batch ex-warehouse, automatic distribution of materials, and AGV docking



**AutoMAT : Auto Material Match技术**  
Auto Material Match technology

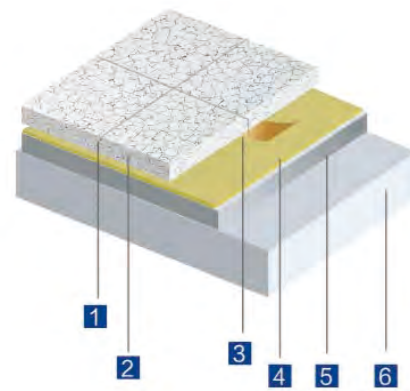
- 基于卷积神经网络目标识别
- 自动物料位置识别
- 多目标匹配技术
- 用户无需手动学习物料外形
- 目标外形匹配
- Target recognition based on convolutional neural network
- Automatic material location recognition
- Multi-target matching technology
- Target shape matching
- Users are not required to manually learn the shape of material

防静电 PVC 地板  
ESD PVC FLOOR

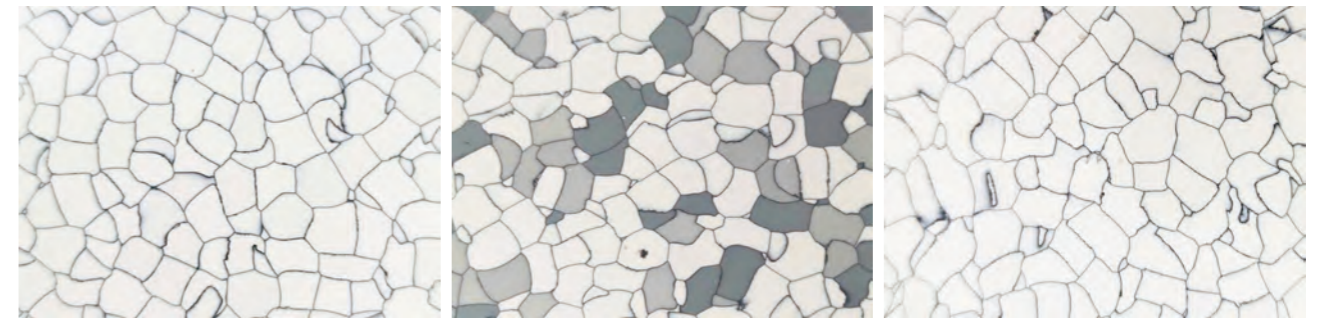
技术参数  
Technical Data

项目 Item	标准 Standards	导电型地板 Conductive floor	耗散型地板 Dissipative floor
厚度 Thickness	EN428	2.0mm 2.5mm 3.0mm	
尺寸 Size	EN426	600*600mm/900*900mm	600*600mm/900*900mm
重量 Weight	EN430	2.0mm-3.8kg/m <sup>2</sup> ; 2.5mm-4.8kg/m <sup>2</sup> ; 3.0mm-5.8kg/m <sup>2</sup>	
阻值 Electric Properties	DIN511953 ASTM F-150 OR NFPA99	2.5*10 <sup>4</sup> ~10 <sup>6</sup> ohm	10 <sup>6</sup> ~10 <sup>9</sup> ohm
静电电压衰减时间 Decay Time	SJ/T10694-2006(1000V +/- 100V <= 2s)	Equal 0.4s	Equal 0.4s
摩擦电压 Charge Voltage	SJ/T10694-2006( V < 100V)	Equal 70	Equal 70
燃烧性能 Combustion Properties	SJ/T11236-2001 (<10s)	Equal 0.35SFV-0	Equal 0.35S FV-0
阻燃等级 Fire Resistance	GRADE DIN4102	B1	B1
脚轮碾压 Wheel Pressure	EN425	No Influence	No Influence
耐磨量 Amount of anti-wear	SJ/T11236-2001 (<=0.020g/cm <sup>2</sup> 1000R)	Equal 0.014	Equal 0.014
耐磨性 Anti-wear Properties	EN660PT2	ITEN-T<2.0 mm <sup>3</sup>	ITEN-T<2.0 mm <sup>3</sup>
残余凹陷度 Residual Concavity	EN433/DIN51955	0.03mm (2.0mm) 0.035mm (2.5mm) 0.04mm (3.0mm)	0.03mm (2.0mm) 0.035mm (2.5mm) 0.04mm (3.0mm)
色固度 Color Fastness	ISO105BO2	At least 6	At least 6
尺寸稳定性 Dimensional Stability	EN434	>=0.10%	>=0.10%
耐化学性 Resistance to chemicals	DIN423/DIN51958	Offers excellent resistance ask for special sheet	Offers excellent resistance ask for special sheet
冲击音吸收 Impact sound absorption	VLI,ISO104,ISO717	Approx 2dB	Approx 2dB

安装示意图  
Installation



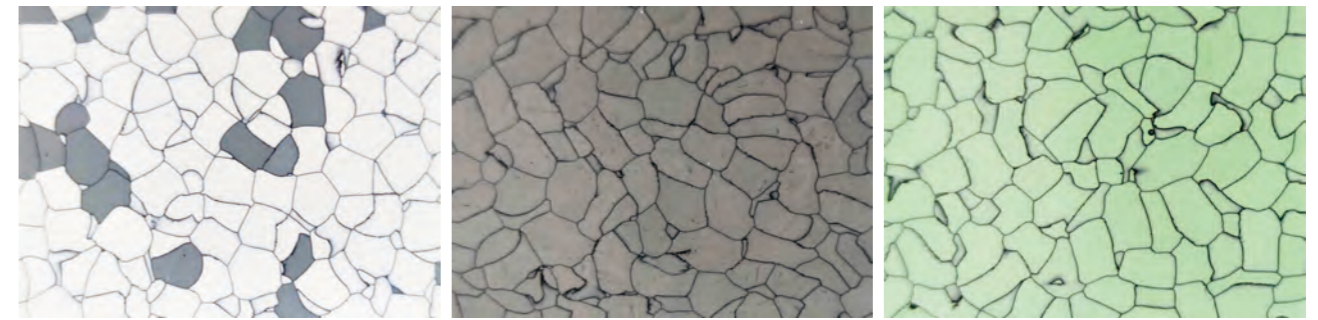
- 1 PVC焊条 PVC Welding Rod
- 2 PVC防静电地板 anti-static PVC floor
- 3 铜箔 Copper strip
- 4 胶水 conductive adhesive
- 5 自流平 cement surface
- 6 基础地面 Ground-based



LN-1103

LN-1101

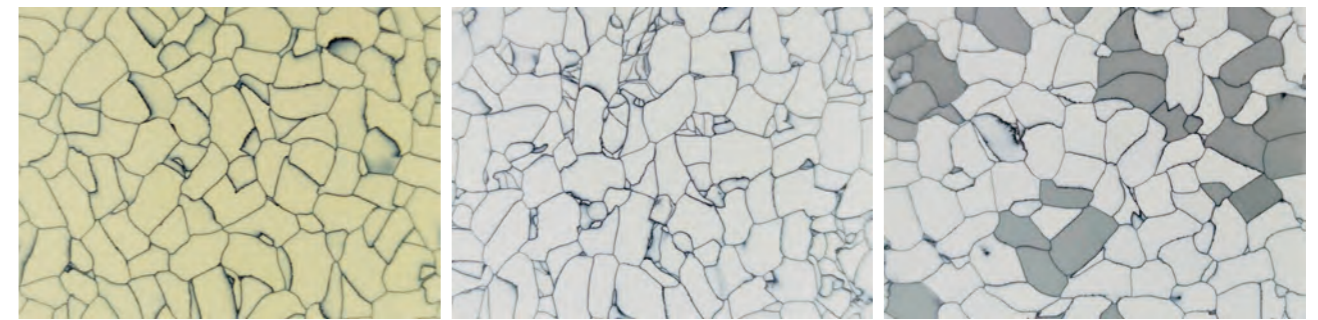
LN-01



LN-1104

LN-06

LN-901

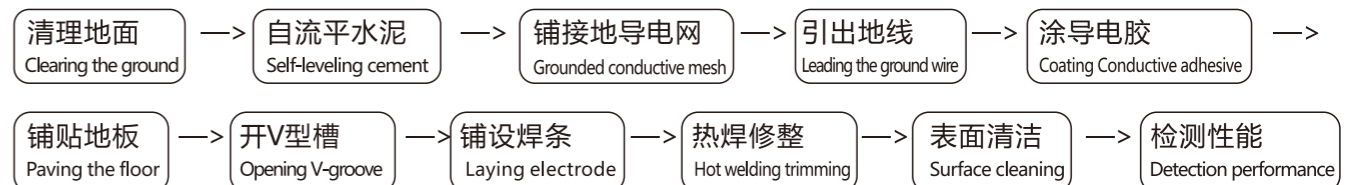


LN-903

LN-9022

LN-909

防静电PVC地板施工程序  
Anti-static PVC floor construction program



铺设铜箔  
Laying copper foil



开槽焊接  
Slot welding



检测性能  
Detection performance



防静电门禁系统  
ESD Access Control System



Model:GD305  
Size:1200\*300\*980mm



Model:GD323  
Size:1200\*300\*980mm

- 翼门材质: 亚克力板
- 工作环境: 室内使用
- 工作环境: 室内使用, 室外使用

- Wing door material: acrylic plate
- For indoor use
- Enviroment: for indoor and outdoor use

- 使用对象: 为高度超过1000mm的用户, 不建议儿童单独使用该设备
- 箱体材料: 304国标不锈钢 (可定制)
- 内部结构: 钢材框架结构
- 通行频率: 20-30人/分钟
- 通道宽度: 600MM
- 控制方式: 继电器信号输入/干接点信号
- 输入电压: AC220V
- 总功率: 110W

- User: user over 1000mm in height, children to use it alone are not recommended
- Box material: SUS304 (customized)
- Internal structure: frame structure
- Passing frequency: 20-30 persons/min
- Channel width: 600MM
- Control method:
- Input voltage: AC220V
- Total power: 110W

- 工作温度: -30°C到+55°C
- 工作湿度: < 95%, 不凝露
- 工作噪音: 65分贝以下
- 运行周期: 300万次或3年 (平均无故障)
- 平均寿命: 500万次或5年
- 闸门开关时间: 小于0.5S

- Operating temperature: -30°C to +55°C
- Humidity: <95%, no condensation of moisture
- Noise: 65dB below
- Operational cycle time: 3 million times or 3 years (MTBF)
- Average lifetime: 5 million times or 5 years
- Gate switching time: <0.5 seconds



Model:GD223  
Size:1200\*280\*980mm



Model:GD223  
Size:1200\*280\*980mm

- 转杆材质: 304 3.0MM厚不锈钢三棍闸旋杆, 保证外力推动不变形
- 工作环境: 室内使用, 室外使用
- Rotating rod material: 304, stainless steel tripod turnstile rod with 3.0MM thickness, ensure that the external force is not deformed
- Enviroment: for indoor and outdoor use

- 使用对象: 为高度超过1000mm的用户, 不建议儿童单独使用该设备
- 箱体材料: 304国标不锈钢 (可定制)
- 内部结构: 钢材框架结构
- 通行频率: 20-30人/分钟
- 通道宽度: 600MM
- 控制方式: 继电器信号输入/干接点信号
- 输入电压: AC220V
- 总功率: 110W

- User: user over 1000mm in height, children to use it alone are not recommended
- Box material: SUS304 (customized)
- Internal structure: frame structure
- Passing frequency: 20-30 persons/min
- Channel width: 600MM
- Control method:
- Input voltage: AC220V
- Total power: 110W

- 工作温度: -30°C到+55°C
- 工作湿度: < 95%, 不凝露
- 工作噪音: 65分贝以下
- 运行周期: 300万次或3年 (平均无故障)
- 平均寿命: 500万次或5年
- 闸门开关时间: 小于0.5S

- Operating temperature: -30°C to +55°C
- Humidity: <95%, no condensation of moisture
- Noise: 65dB below
- Operational cycle time: 3 million times or 3 years (MTBF)
- Average lifetime: 5 million times or 5 years
- Gate switching time: <0.5 seconds

防静电系统工程

Antistatic Systems Engineering

1. 防静电系统必须有独立可靠的接地装置，接地电阻一般应小于 10 ohm。
  2. 防静电工作区地面铺设防静电地板或导电橡胶地垫。
  3. 防静电工作区应标明区域界限，并在明显处悬挂警示标志。
  4. 防静电工作台应具有整体导泄静电之功能，并配有防静电接地插座及防静电工作椅。
1. Antistatic system must have independent and stable grounding system, grounding resistance should be less than 10 ohm.
  2. The ground of antistatic working area should lay esd or conductive tile or conductive rubber floor mat.
  3. Antistatic working area should mark label, hanging warning logo in obvious place.
  4. The antistatic workbench could discharge the static with esd grounding socket and match with antistatic chair.



防静电工作台面规格系列

Antistatic Workbench Tabletop Series (Thickness: 25mm/50mm)

型号 MODEL	产品名称 PART NAME	规格尺寸 SIZE (mm)	型号 MODEL	产品名称 PART NAME	规格尺寸 SIZE (mm)
LN-T180106	Antistatic Table Top	1000*600	LN-T180159	Antistatic Table Top	1530*900
LN-T180126	Antistatic Table Top	1200*600	LN-T180188	Antistatic Table Top	1830*750
LN-T180156	Antistatic Table Top	1530*600	LN-T180189	Antistatic Table Top	1830*900
LN-T180158	Antistatic Table Top	1530*750	LN-T180228	Antistatic Table Top	2280*750

LN-DAW01



Example No. LN-DAW01 ESD Standard Adjustable Workbench

配件编号 Spare Part No.	配件名称 Spare Part Name	数量 QTY
①	ESD Worktable Tabletop 1530*750mm*25mm	2
②	Standard Antistatic Adjustable table support 1500*750mm	2
③	Perforated Tubular frame 2M750*1359mm(H)	1
④	ESD Back Panel M750*390mm	2
⑤	ESD Steel Shelf M750*300mm+Shelf Bracket Load: 50kg	4
⑥	Suspension Rail M750mm, Load: 30kg	2
⑦	Light Frame Rail 2M750*380mm+Sliding Hook	2
⑧	Light	2
⑨	Power supply Junction box M750 type	2
⑩	Double layer drawer 350*450*250mm	2
⑪	Keyboard Tray	2

防静电可调节简易工作台

Example No. LN-SAW01 ESD Adjustable Workbench

配件编号 Part No.	配件名称 Part Name	数量 QTY
①	ESD Worktable Tabletop 1200*600mm*25mm	1
②	Standard Antistatic Adjustable table support 1200*600mm	1

可根据客户需求增减配置  
Parts can be increased or decreased according to customer needs



防静电可调节轻型工作台

Example No. LN-SAW02 ESD Adjustable Workbench

配件编号 Part No.	配件名称 Part Name	数量 QTY
①	ESD Worktable Tabletop 1530*750mm*25mm	1
②	Standard Antistatic Adjustable table support 1500 * 750mm	1
③	Perforated Tubular frame 2M750 * 1359mm (H)	1
④	ESD Back Panel M750*390mm	2
⑤	ESD Steel Shelf M750*300mm+Shelf Bracket	2
⑥	Suspension Rail M750mm	2
⑦	Light Frame Rail 2M750*380mm+Sliding Hook	1
⑧	Light	1
⑨	Power supply Junction box M750 type	2
⑩	Double layer drawer 350*450*250mm	1
⑪	Keyboard Tray	1
⑫	Single-arm A4 file shelf	1



可根据客户需求增减配置  
Parts can be increased or decreased according to customer needs

防静电固定型工作台

Example No. LN-SFW01 ESD Fixed Workbench

配件编号 Part No.	配件名称 Part Name	数量 QTY
①	ESD Worktable Tabletop 1530*750mm*25mm	1
②	Standard Antistatic Adjustable table support 1500 * 750mm	1
③	Perforated Tubular frame 2M750 * 870mm (H)	1
④	Perforated Back Panel M750*390mm	1
⑤	SHUTTER TYPE BACK PANEL M750*390mm	1
⑥	ESD Steel Shelf 1530*380mm +Shelf Bracket	1
⑦	Light	1
⑧	Power supply Junction box M750 type	2
⑨	Double layer drawer 350*450*250mm	1



防静电重型工作台

Example No. LN-HFW01 ESD Heavy Duty Workbench

配件编号 Part No.	配件名称 Part Name	数量 QTY
①	Stainless steel Tabletop 1530*900mm*50 mm	1
②	Heavy Duty fixed table support 1500 * 900mm	1
③	Perforated Tubular frame 2M750 * 1359mm (H)	1
④	ESD Perforated Back Panel M750*390mm,Grey	1
⑤	ESD BACK PANEL M750*390mm	1
⑥	ESD Steel Shelf M750*300mm +Shelf Bracket	2
⑦	Suspension Rail M750, load: 30kg	2
⑧	Light Frame Rail	1
⑨	Light	1
⑩	ESD drawer Cabinet 350*450*500mm	1



工具柜  
Tool Cabinet



A  
100-S

LN-0001 02



A  
100-S  
100-S  
150-S  
200-S

LN-0002 02



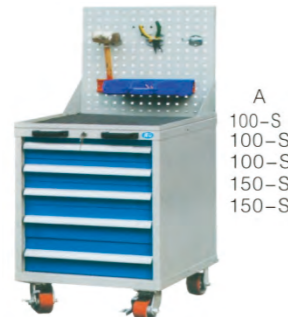
A  
100-S  
100-S  
150-S  
150-S

LN-0003 02



A  
100-S  
100-S  
150-S  
200-S

LN-0004 02



A  
100-S  
100-S  
150-S  
150-S

LN-0005 02



A  
75-S  
75-S  
100-S  
100-S  
150-S  
200-S

LN-0006 02



A  
100-S  
150-S  
150-S  
150-S  
150-S

LN-0007 02



A  
75-S  
75-S  
100-S  
100-S  
100-S  
150-S

LN-0008 02



A  
100-S  
100-S  
100-S  
150-S  
150-S

LN-0009 02

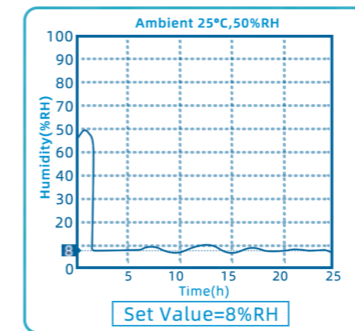


型号 MODEL	尺寸 EXTERNAL DIMENSION
LN-0001 02	W572 x D600 x H870mm+450MM
LN-0002 02	W572 x D600 x H820mm+450MM
LN-0003 02	W572 x D600 x H870mm+450MM
LN-0004 02	W716 x D572 x H820mm+450MM
LN-0005 02	W716 x D572 x H870mm+450MM
LN-0006 02	W716 x D572 x H970mm+450MM
LN-0007 02	W716 x D572 x H970mm+450MM
LN-0008 02	W1200 x D600 x H860mm+450MM
LN-0009 02	W1160 x D600 x H960mm+450MM

防潮柜  
Dry Cabinet

Humidity Range:1~50%RH

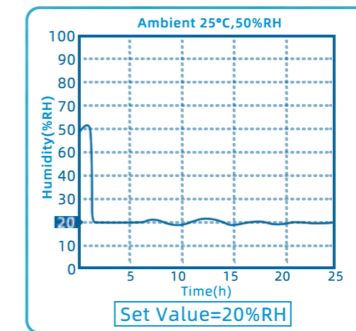
<Performance>



Sample: H15U-1200-6

Humidity Range:15~50%RH

<Performance>



Sample: H1U-1200-6



H1U-157 H15U-157

- 容量 Capacity: 165L
- 外尺寸 External dimension: W405 x D475 x H960mm
- 内尺寸 Internal dimension: W448 x D425 x H869mm
- 搁板 Shelf: 3



H1U-315 H15U-315

- 容量 Capacity: 334L
- 外尺寸 External dimension: W905 x D475 x H1050mm
- 内尺寸 Internal dimension: W903 x D425 x H869mm
- 搁板 Shelf: 3



H1U-575 H15U-575

- 容量 Capacity: 607L
- 外尺寸 External dimension: W905 x D823 x H1050mm
- 内尺寸 Internal dimension: W903 x D773 x H869mm
- 搁板 Shelf: 3



H1U-600 H15U-600

- 容量 Capacity: 624L
- 外尺寸 External dimension: W600 x D695 x H1820mm
- 内尺寸 Internal dimension: W598 x D645 x H1618mm
- 搁板 Shelf: 3



H1U-400 H15U-400

- 容量 Capacity: 413L
- 外尺寸 External dimension: W600 x D695 x H1274mm
- 内尺寸 Internal dimension: W598 x D645 x H1071mm
- 搁板 Shelf: 3



H1U-1200-6 H15U-1200-6

- 容量 Capacity: 1250L
- 外尺寸 External dimension: W1200 x D695 x H1820mm
- 内尺寸 Internal dimension: W1198 x D645 x H1618mm
- 搁板 Shelf: 3



型号 Model	椅面尺寸 Surface size	椅面材质 Surface material	可调高度 Adjust. Height	五星脚半径 Five-star feet radius	系统电阻 System Resistance
LN-1542110A	φ325mm	PU foam	430x570mm	R=240mm	10 <sup>6</sup> -10 <sup>9</sup> Ω
LN-1542111A		PU foam	650-850mm	R=260mm	
LN-1542120B		PU foam	450-600mm	R=220mm	
LN-1542241C	φ335mm	PU foam	650-850mm	R=240mm	
LN-1542250C		PU foam	450-600mm	R=240mm	



型号 Model	椅面尺寸 Surface size	椅面材质 Surface material	可调高度 Adjust. Height	五星脚半径 Five-star feet radius	系统电阻 System Resistance
LN-1542310A	300x350mm	PU foam	450-600mm	R=260mm	10 <sup>6</sup> -10 <sup>9</sup> Ω
LN-1542351A		PU foam	650-850mm	R=240mm	
LN-1542471C	350x340mm	PU foam	650-850mm	R=320mm	
LN-1542550D	φ340mm	PU foam	450-600mm	R=240mm	
LN-1544110A	φ320mm	PU leather	440-590mm	R=240mm	



型号 Model	椅面尺寸 Surface size	椅面材质 Surface material	可调高度 Adjust. Height	五星脚半径 Five-star feet radius	系统电阻 System Resistance
LN-1547210A	φ320mm	PU leather	440-600mm	R=260mm	10 <sup>6</sup> -10 <sup>9</sup> Ω
LN-1547250A		PU leather	440-5800mm	R=240mm	
LN-15421150A		PU Foam	440-5800mm	R=240mm	
LN-1544410DL		PU leather	450-610mm	R=260mm	
LN-1544461A		PU leather	640-840mm	R=320mm	



型号 Model	椅座尺寸 Seat size	靠背尺寸 Back size	椅面材质 Surface material	可调高度 Adjust. Height	五星脚半径 Five-star feet R	系统电阻 System Resistance
LN-1543110A	350x250mm	380x380mm	PU foam	460-610mm	R=260mm	10 <sup>7</sup> -10 <sup>9</sup> Ω
LN-1543140C			PU foam	460-610mm	R=240mm	
LN-1543261C	380x380mm	350x250mm	PU foam	650-850mm	R=320mm	
LN-1543340C	420x400mm	380x260mm	PU foam	430-580mm	R=240mm	
LN-1543410A			PU foam	460-610mm	R=260mm	



型号 Model	椅座尺寸 Seat size	靠背尺寸 Back size	椅面材质 Surface material	可调高度 Adjust. Height	五星脚半径 Five-star feet R	系统电阻 System Resistance
LN-1543461E	420x400mm	380x260mm	PU foam	650-850mm	R=320mm	10 <sup>6</sup> -10 <sup>9</sup> Ω
LN-1543560AF	440x420mm	400x320mm	PU foam	420-570mm	R=320mm	
LN-1543570E			PU foam	480-630mm	R=300mm	
LN-1543660E	430x420mm	360x220mm	PU foam	420-570mm	R=320mm	
LN-1543661A			PU foam	650-850mm	R=320mm	



型号 Model	椅座尺寸 Seat size	靠背尺寸 Back size	椅面材质 Surface material	可调高度 Adjust. Height	五星脚半径 Five-star feet R	系统电阻 System Resistance
LN-1543671AF	430x420mm	360x220mm	PU foam	650-850mm	R=320mm	10 <sup>6</sup> -10 <sup>9</sup> Ω
LN-1546360	440*410mm	440*300mm	PU leather	440-600mm	R=320mm	
LN-1546171	440*410mm	440*300mm	PU foam	600-800mm	R=300mm	
LN-1543860E	440*420mm	380*320mm	PU foam	420-570mm	R=320mm	
LN-1543861A	440*420mm	380*320mm	PU foam	650-850mm	R=320mm	



型号 Model	椅座尺寸 Seat size	靠背尺寸 Back size	椅面材质 Surface material	可调高度 Adjust. Height	五星脚半径 Five-star feet radius	系统电阻 System Resistance
LN-1545110A	440x410mm	410x300mm	PU leather	460-620mm	R=260mm	10 <sup>6</sup> -10 <sup>9</sup> Ω
LN-1545110EF			PU leather	460-620mm	R=260mm	
LN-1545130CF			PU leather	480-640mm	R=300mm	
LN-1545360B			PU leather	440-580mm	R=320mm	
LN-1545361C			PU leather	630-830mm	R=320mm	



型号 Model	椅座尺寸 Seat size	靠背尺寸 Back size	椅面材质 Surface material	可调高度 Adjust. Height	五星脚半径 Five-star feet radius	系统电阻 System Resistance
LN-1546820A	Φ320mm	-	Stainless steel	470-620mm	R=220mm	10 <sup>6</sup> -10 <sup>9</sup> Ω
LN-1548560AF	Φ320x380mm	430x430mm	ESD textile fabrics	430x580mm	320mm	
LN-1548238C	Φ350mm	-	Stainless steel	500-640mm	240mm	
LN-1548239C	Φ320mm	-	Stainless steel	500-640mm	240mm	
LN-1547230	315x215mm	-	PU foam	600-700mm	-	

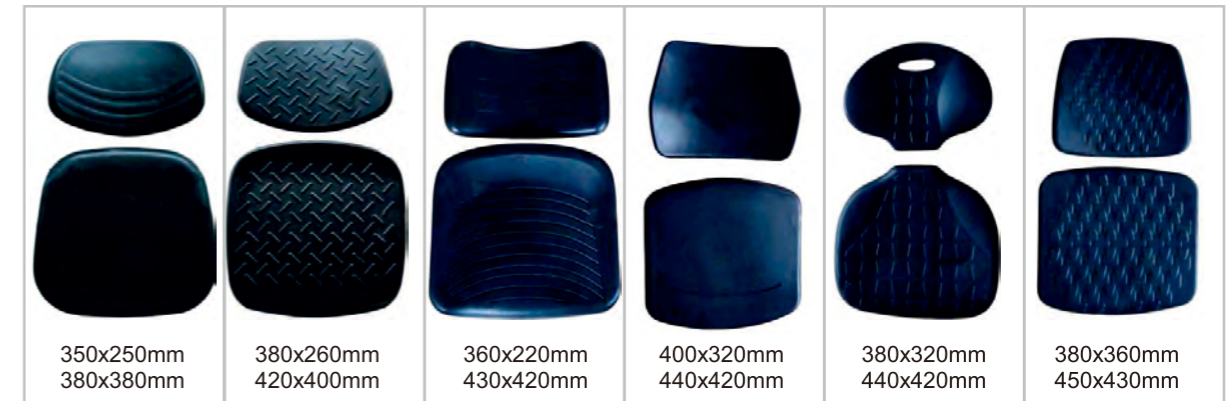
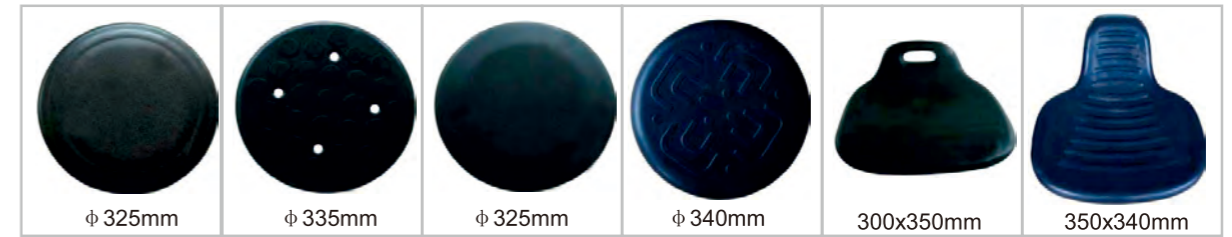
椅脚  
Chair feet



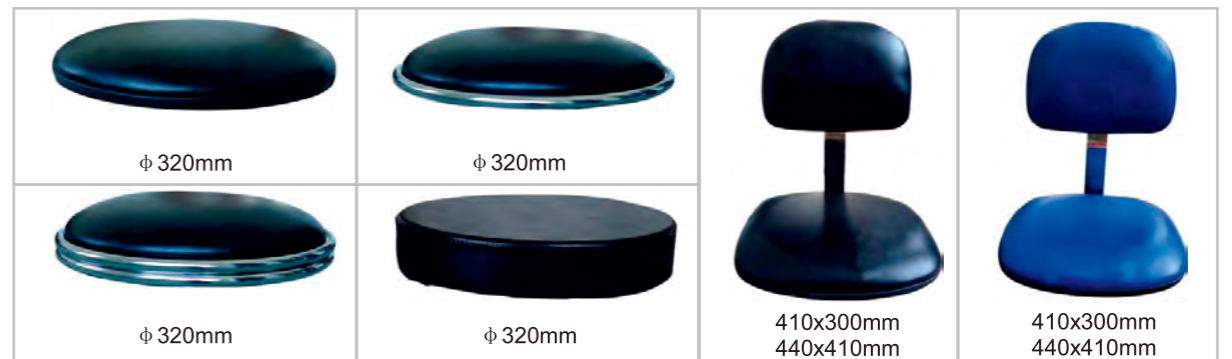
序号 NO.	规格 Specification	序号 NO.	规格 Specification	序号 NO.	规格 Specification
1	灰色脚杯 Grey fixed feet	4	实心黑脚杯 Solid black fixed feet	7	黑色轮子 Black caster
2	实心灰脚杯 Solid grey fixed feet	5	金属脚杯 Metal fixed feet	8	黑色轮子 Black caster
3	黑色脚杯 Black fixed feet	6	灰色轮子 Grey caster	9	金属轮子 Metal caster



PU 发泡椅面  
PU Foam Surface



PU 皮革椅面  
PU leather Surface



其他配件  
Other Chair Accessories



**防静电抗疲劳地垫**  
**ESD Anti-fatigue Mat**

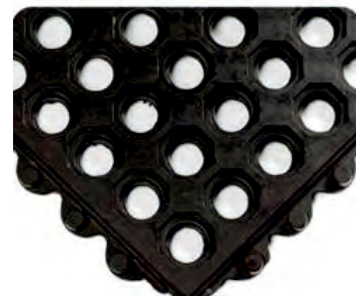
抗疲劳地垫是目前运用最广泛的地垫。为工人提供安全和舒适度最高的防滑抗疲劳地垫，能提高工作中的健康系数、减缓身体疲劳、有效保证工作效率。

The Anti-fatigue Mat is the most widely used floor mat. A safety and comfortable mat can improve employee health index and relieve fatigue, guarantee the working efficiency.



LN-1550418

- 材料：3层结构，表面材料高强度耐磨 PVC，中间为 EDPM 泡棉，底部导电橡胶。
- 常规尺寸 610x910x18mm, 610x450x18mm,其他尺寸可以定制
- 长度：15m 以内, 宽度：0.4-1.2m, 厚度：9-40mm
- 颜色：黑色 或黑色带黄边。
- 表面电阻： $10^8-10^9 \Omega$  (PVC 层)。
- Material:3 layers structure, surface is high strength PVC, middle layer is EPDM foam, bottom layer is conductive rubber
- Size: 610x910x18mm, 610x450x18mm, other size can be customized
- Max .length :15m Max. Width:0.4-1.2m Thickness: 9-40mm
- Color: Black or Black & Yellow
- Surface resistance:  $10^8-10^9 \Omega$  (PVC Surface)

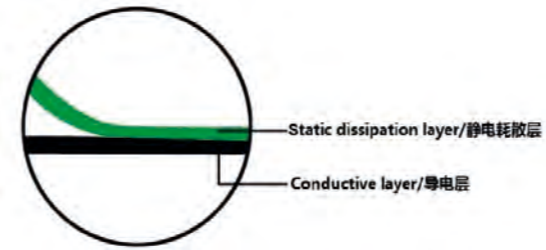


LN-1550472

- 材料：丁腈橡胶
- 尺寸：910\*910\*12.5mm(可拼接)
- 耐油，耐磨，耐酸碱，耐化学品,适合湿滑油污区域。
- 颜色：黑色
- 表面电阻： $10^6-10^8 \Omega$
- Material: Nitrile Rubber Buna (NBR)
- Size: 910\*910\*12.5mm(can be connected together)
- Oil resistance, abrasion resistance, acid and alkali resistant, resistant to chemicals. Suit for wet oil area
- Color: Black
- Surface resistance:  $10^6-10^8 \Omega$

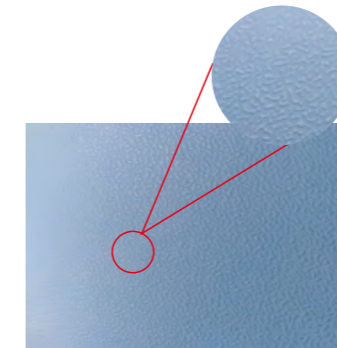
型号 Model	LN-1550503	LN-1550950
材料 Material	天然橡胶 Natural rubber	天然橡胶 Natural rubber
尺寸 Size	910*910*16mm/910*610*16mm 910*300*16mm	910*610*17mm 610**450*17mm
拼接 Joint	牢固锁扣 Strong lock	T型 T type lock
图片 Picture		
拼接方式 Joint connection		
应用 Application	适合多种超常规 或几何形状工作区域, Suit for any shape of workspace	可单独使用或者小区域矩形工位形状铺设 Used alone ,or suit for small rectangle workspace

**防静电台垫**  
**ESD Table Mat**



LN-1550097H01 耐高温台垫

绿色环保，耐高温 300℃ 不变色，400℃ 不燃烧，  
耐低温 -30℃ - -70℃ 不分解  
Green and environment friendly, high temperature resistance  
300°C does not change color, 400°C does not burn, low  
temperature resistance -30°C ---70°C does not decompose.



LN-15500997T01  
布纹防滑台垫  
Textured ESD Table Mat

特性 Feature		
静电耗散层 Static dissipation layer	表面电阻 Surface resistance	$10^6-10^9 \Omega$
	摩擦静电位 Friction charge electrostatic	<100V
导电层 Conductive layer	表面电阻 Surface resistance	$\leq 10^6 \Omega$
	摩擦静电位 Friction charge electrostatic	<50V
体积电阻 Volume Resistance	$10^7-10^{10} \Omega \cdot \text{cm}$	



LN-1550097  
防静电台垫  
ESD Table Mat

**颜色 Color**

黑色 Black    蓝色 Blue    绿色 Green  
灰色 Grey    草绿色 Olive Green    天蓝色 Azure  
绿色 Green

特殊颜色均可定制  
Any colors can be customized

**产品表面 Product Surface**

哑光 Matt/Dull    亮光 Glossy

**厚度 Thickness**

1.7 mm  
1.8 mm  
2 mm  
2 mm  
1:1 2 mm  
3 mm  
5 mm

Any other thickness can be made

	LN-1591102 有绳手腕带 1.8m Wired Wrist Strap 1.8m
	LN-1591107 银纱手腕带 High quality Wrist Strap
	LN-1591403 金属手腕带 Metal Wrist Strap
	LN-1591405 金属可调手腕带 Adjustable Metal Wrist Strap
	LN-1591601 双回路金属手腕带 Dual Wire Metal Wrist Strap
	LN-1591701 硅胶手腕带 Silica Gel Wrist Strap
	LN-1591802 接地线 Mat Grounding Cord
	LN-1591804 接地插座 Dual Bench Grounding Socket
	LN-1591905 脚腕带 Heel Strap

	LN-1591106 有绳手腕带 2.5m Wired Wrist Strap 2.5m
	LN-1591203 魔术贴手腕带 Velcro Wrist Strap
	LN-1591404 金属可调手腕带 Adjustable Metal Wrist Strap
	LN-1591602 双回路布手腕带 Dual Wire Fabric Wrist Strap
	LN-1591801 接地线 Mat Grounding Cord
	LN-1591803 接地线 Mat Grounding Cord
	LN-1591901A 脚腕带 Heel Strap
	LN-1591902 一次性脚腕带 Disposable Heel Strap
	LN-1591901D 防静电脚腕带 ESD Heel Strap



LN-1560101



材料 Material

Strip

Grid



LN-1560102

蓝

Blue



LN-1560103

LN-1560105

- 型号：LN1560103
  - 名称：防静电分体服
  - 材料：98%聚酯纤维，2%导电丝
  - 导电丝：5mm 条形/5mm 网格
  - 颜色：常规白，蓝
  - 领口：翻领/立领
  - 男女皆宜
  - 可水洗
  - 特殊尺寸、样式、颜色可定制
- Model: LN1560103
  - Description: ESD Jacket & Suits:
  - Material: 98% Polyester, 2% Conductive Fibers
  - Conductive Fibers: 5mm strip/5mm Grid
  - Color: White, Blue
  - Collar Type: Turndown collar/ Stand collar
  - Unisex design
  - Can be washed by water
  - Special size and design and color can be customized
- 型号：LN1560105
  - 名称：防静电连体服
  - 材料：98%聚酯纤维，2%导电丝
  - 导电丝：5mm 条形/5mm 网格
  - 颜色：常规白，蓝
  - 男女皆宜
  - 可水洗
  - 特殊尺寸、样式、颜色可定制
- Model: LN1560105
  - Description: ESD Coverall:
  - Material: 98% Polyester, 2% Conductive Fibers
  - Conductive Fibers: 5mm strip/5mm Grid
  - Color: White, Blue
  - Unisex design
  - Can be washed by water
  - Special size and design and color can be customized

LN-1560302 防静电帽子 ESD Cap	LN-1560304 防静电帽子 ESD Cap	LN-1560312 防静电帽子 ESD Cap	LN-1560317 防静电袖套 ESD Sleevelet
LN-1560318 防静电可清洗鞋套 ESD Shoe Cover	LN-1560319 防静电围裙 ESD Apron	LN-1560320 防静电可清洗口罩 ESD Face mask	LN-1560321 防静电软底鞋 ESD Soft Booties

防静电T恤  
ESD Polo T-shirt



LN-1560106

- 型号：LN-1560106
- 名称：防静电POLO衫
- 材料：96%棉，4%导电丝
- 颜色：常规黑色、蓝色
- Model:LN1560106
- Description:ESD Polo T-shirt
- Material:96%Cotton 4%Conductive Fibers
- Color:Black,Blue



LN-1560107

- 型号：LN-1560107
- 名称：防静电短袖圆领衫、平纹汗衫
- 材料：96%棉，4%导电丝
- Model:LN-1560107
- Description:ESD Short Sleeve T-Shirt
- Material:96%Cotton,4%conduction fibers



LN-1560108

- 型号：LN-1560108
- 名称：防静电POLO衫
- 材料：58%棉，39%聚酯纤维，3%导电丝
- 颜色：常规花灰色、蓝色
- Model:LN1560108
- Description:ESD Polo T-shirt
- Material:58%Cotton,39%Polyester, 3%Conductive Fibers
- Color:Grey, Blue



LN-1560109

- 型号：LN-1560109
- 名称：防静电T恤
- 材料：58%棉，39%聚酯纤维，3%导电丝
- 颜色：常规花灰色、蓝色
- Model:LN1560109
- Description: ESD T-shirt
- Material:58%Cotton,39%Polyester, 3%Conductive Fibers
- Color:Grey,Blue

\*注：男女皆宜，可水洗，特殊尺寸、样式、颜色可定制

\*Unisex design, Can be washed by water, Special size and design and color can be customized



防静电鞋和安全鞋  
ESD Shoes and Safety Shoes

 Color: <input type="checkbox"/> <input checked="" type="checkbox"/> <input checked="" type="checkbox"/>		 Color: <input type="checkbox"/> <input checked="" type="checkbox"/> <input checked="" type="checkbox"/>
LN-1577101A 材料 Material: SPU	LN-1577101A1 材料 Material: SPU	LN-1577101B 材料 Material: SPU
 Color: <input type="checkbox"/> <input checked="" type="checkbox"/> <input checked="" type="checkbox"/>		
LN-1567101C 材料 Material: SPU	LN-1577101F 材料 Material: PU	LN-1577103 鞋面 Upper : Canvas 鞋底 Sole : PVC/PU/SPU
		
LN-1577104 鞋面 Upper : Canvas 鞋底 Sole : PVC/PU/SPU	LN-1577105 鞋面 Upper : PVC 鞋底 Sole : PVC/PU/SPU	LN-1577106A 鞋面 Upper : PVC 鞋底 Sole : PVC/PU/SPU
		
LN-1577106B 鞋面 Upper : PVC 鞋底 Sole : PVC/PU/SPU	LN-1577108 鞋面 Upper : Fabric 鞋底 Sole : PVC/PU/SPU	LN-1577113 鞋面 Upper : Cow Leather 鞋底 Sole : PU

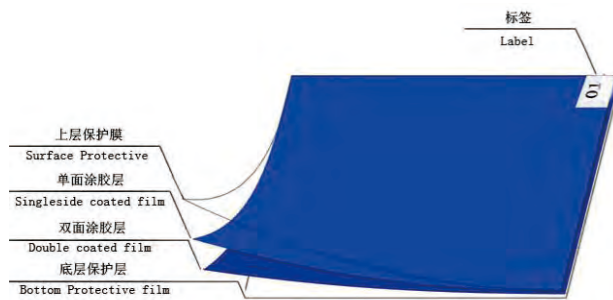
防静电手套  
ESD Glove

		
LN-1588001 防静电手套 ESD Glove	LN-1588002 防静电点塑手套 ESD Dotted Glove	LN-1588003 碳纤维手套 Carbon Glove
		
LN-1588003F 碳纤维涂指手套 Carbon Top Coating Glove	LN-1588003P 碳纤维涂掌手套 Carbon Palm Coating Glove	LN-1588004 铜纤维手套 Copper Fiber Glove
		
LN-1588004F 铜纤维涂指手套 Copper Top Coating Glove	LN-1588004P 铜纤维涂掌手套 Copper Palm Coating Glove	LN-1588005 尼龙手套 Nylon Glove
		
LN-1588005F 尼龙涂指手套 Nylon Top Coating Glove	LN-1588005P 尼龙涂掌手套 Nylon Palm Coating Glove	LN-1588006 5级耐切割手套 Class 5 Cut-Resistant Glove

粘尘垫  
Sticky Mat

我司粘尘垫是根据最新技术研发生产的，具有很好的韧性和粘性。公司拥有多条国内外一流的全自动多层共挤薄膜吹塑生产线，年产 PE 膜 4000 吨以上。可有效地去除灰尘。  
广泛应用于电子车间，无尘室，实验室及医院，操作间等。

Sticky mat method is using the latest technology to develop and produce, which make it with good toughness and stickiness. We have a number of domestic and overseas first-class automatic production line for multilayer co-extrusion film blowing, with an annual output of 4000 tons of PE film. It can effectively remove dust. Widely used in workshop, clean room, laboratory, and hospital, operating room door.



规格 Specification	
型号 Model	LN-1550095
颜色 Color	蓝, 白, 绿, 红 Blue, White, Green, Red
尺寸 Size	18"*36", 18"*45", 24"*36", 26"*45", 非标尺寸可定制 Non-standard size can be customized.



特性 Feature	
膜材料 Film Material	PE
膜厚 Film thickness	30µm-50µm
胶厚 Coat mucusthickness	5~7µm
抗拉强度 Tensile strength	>1.2kg/cm
去污效果 Remove dirt effect	≥99.9%

防滑粘尘板  
Anti Slip Board For Sticky Mat

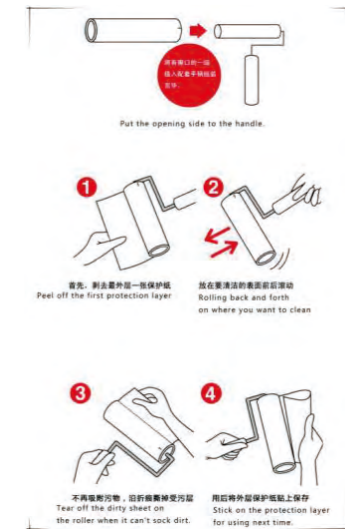


**LN-1550099**  
尺寸可定制, 适用所有型号粘尘垫  
Size can be customized, suitable for all types of antiskid plates

粘尘滚筒  
Sticky Roller

粘尘滚筒，又名可撕式 PE 粘尘滚筒。主要应用于电路板生产，机电行业，LCD 行业，电子配件行业及日常生活中使用。它可以快速去除物体表面灰尘，可以替代抹布，扫把，并且避免二次污染。

Sticky roller, also known as PE tearing sticky roller, is mainly used in circuit boards, mechanical and electronic industry, LCD industry, electronics industry, as well as the daily life. It can quickly remove pollutants and dust on the surface of the object, instead of a dishcloth, broom toolsetc, and avoid twice pollution in purification workshop.



型号 MODEL	颜色 Color	宽度 Width	长度 Length	粘度 Stickness	厚度 Thickness
SR-100B	蓝色/白色 Blue/White	4"	18M	LV	4C
SR-150B	蓝色/白色 Blue/White	6"	18M	MV	4C
SR-200B	蓝色/白色 Blue/White	8"	18M	MHV	4C
SR-300B	蓝色/白色 Blue/White	10"	18M	HV	4C
SR-400B	蓝色/白色 Blue/White	12"	18M	SHV	4C

无尘布  
Cleanroom Cloth Wipe

由 100% 的 polyester 经特殊处理后连续织造而成，更轻的克重,更好的吸液性,更低的发尘量，100% polyester 连续织造而成镭射切割，在 Class100 级无尘室中清洗，包装真空包装，可提供叠装，散装等多种方式制。

Class1000~100,000 无尘环境中物体擦拭、IC 产业及特殊需求环境下的地板、设备机器等环境的维护、GMP 车间微污染控制医疗场所的污染控制等多方面。

By 100% polyester continuous weaving after special treatment, lighter weight, better fluid absorption, lower dust emission, 100% polyester Continuous weaving made of laser cutting,Class1000~100,000 Clean the objects in a clean environment, floor under IC industry and special demand environment, maintenance of equipment and other environment, GMP workshop micro-pollution control the pollution control of the medical place and other aspects.

LN-1601009S 聚酯纤维无尘布 Cleanroom Cloth Wipe	LN-1601009D 聚酯纤维无尘布 Cleanroom Cloth Wipe	LN-1601009LE 聚酯纤维无尘布 Cleanroom Cloth Wipe
LN-1604009 超细纤维无尘布 Microfiber Wiper	LN-1606002 乱纹无尘布 Disorder Weave Microfiber	LN-1608001 超细纤维无尘布 Microfiber Wiper
LN-1600609 无尘纸 Cleanroom Paper	LN-160M-3 无尘纸 Cleanroom Paper	LN-1602000 钢网擦拭纸 Stencil Roller

LN-1608101 手指套-黄色 Finger Cot-Yellow	LN-1608102 手指套-粉色 Finger Cot-Pink	LN-1608103 手指套-黑色 Finger Cot-Black
LN-1600831 永久性防静电酒精瓶 Permanent ESD Alcohol Bottle	LN-1608106R1 加大版导电鞋套 Extra Large Conductive Shoe Cover	M-1000 胶纸机 Tape Dispenser
LN-1608106 导电无纺布鞋套 Conductive Shoe Cover	LN-1608107 无纺布口罩 Non-Woven Face Mask	LN-1608108 活性炭口罩 Active carbon Face Mask
LN-1600316 一次性条形帽 Disposable Linearity Hat	LN-1600830 防静电酒精瓶 ESD Alcohol Bottle	LN-1607028 防静电网格帘 ESD Grid Curtain

防静电刷子  
ESD Brush

 175mm 30mm 16mm 3排 20孔 20 Holes in 3 Lines LN-1612101A	 175mm 30mm 16mm 3排 20孔 20 Holes in 3 Lines LN-1612101B	 175mm 60mm 18mm 2排 20孔 20 Holes in 2 Lines LN-1612102	 225mm 90mm 22mm 3排 34孔 34 Holes in 3 Lines LN-1612103
 225mm 90mm 22mm 3排 34孔 34 Holes in 3 Lines LN-1612104	 252mm 130mm 28mm 1排 17孔 17 Holes in 1 Line LN-1612105	 385mm 215mm 48mm 1排 33孔 33 Holes in 1 Line LN-1612106	 33mm 25mm 143mm 1排 7孔 7 Holes in 1 Line LN-1612108-7
 45mm 25mm 143mm 1排 9孔 9 Holes in 1 Line LN-1612108-9	 57mm 25mm 170mm 1排 12孔 12 Holes in 1 Line LN-1612108-12	 90mm 67mm 21mm 5排 50孔 50 Holes in 5 Lines LN-1612109	 120mm 92mm 21mm 7排 98孔 98 Holes in 7 Lines LN-1612110
 180mm 155mm 21mm 8排 160孔 160 Holes in 8 Lines LN-1612111	 20mm 30mm 151mm 1排 3孔 3 Holes in 1 Line LN-1612112-3	 45mm 40mm 160mm 1排 6孔 6 Holes in 1 Line LN-1612112-6	 60mm 40mm 170mm 1排 8孔 8 Holes in 1 Line LN-1612112-8
 124mm 18mm 3排 7孔 7 Holes in 3 Lines LN-1611849-7	 150mm 18mm 2排 11孔 11 Holes in 2 Lines LN-1611849-11	 140mm 18mm 1孔 1 Hole LN-1611850A	 140mm 18mm 1孔 1 Hole LN-1611850B

防静电镊子  
ESD Tweezer

 135mm 材质 Material:302 硬度 Hardness:HRC40 00-SA	 120mm 材质 Material:302 硬度 Hardness:HRC40 2-SA	 120mm 材质 Material:302 硬度 Hardness:HRC40 2A-SA	 120mm 材质 Material:302 硬度 Hardness:HRC40 3-SA
 110mm 材质 Material:302 硬度 Hardness:HRC40 3C-SA	 110mm 材质 Material:302 硬度 Hardness:HRC40 5-SA	 115mm 材质 Material:302 硬度 Hardness:HRC40 5A-SA	 115mm 材质 Material:302 硬度 Hardness:HRC40 5B-SA
 140mm 材质 Material:302 硬度 Hardness:HRC40 7-SA	 120mm 材质 Material:302 硬度 Hardness:HRC40 34A-SA	 120mm 材质 Material:302 硬度 Hardness:HRC40 90-SA	 125mm 材质 Material:302 硬度 Hardness:HRC40 AA-SA
 110mm 材质 Material:302 硬度 Hardness:HRC40 ESD-10	 140mm 材质 Material:302 硬度 Hardness:HRC40 ESD-11	 135mm 材质 Material:302 硬度 Hardness:HRC40 ESD-12	 120mm 材质 Material:302 硬度 Hardness:HRC40 ESD-13
 120mm 材质 Material:302 硬度 Hardness:HRC40 ESD-15	 120mm 材质 Material:302 硬度 Hardness:HRC40 ESD-17	 130mm 尖端 Tip:PPS1x10 <sup>8</sup> Ω: 材质 Material:302 ESD-00	 135mm 尖端 Tip:PPS1x10 <sup>8</sup> Ω: 材质 Material:302 ESD-7A
 135mm 尖端 Tip:PPS1x10 <sup>8</sup> Ω: 材质 Material:302 ESD-259	 135mm 尖端 Tip:PPS1x10 <sup>8</sup> Ω: 材质 Material:302 ESD-259A	 110mm 材质 Material:302 硬度 Hardness:HRC40 ST-10	 140mm 材质 Material:302 硬度 Hardness:HRC40 ST-11
 135mm 材质 Material:302 硬度 Hardness:HRC40 ST-12	 120mm 材质 Material:302 硬度 Hardness:HRC40 ST-13	 110mm 材质 Material:302 硬度 Hardness:HRC40 ST-14	 120mm 材质 Material:302 硬度 Hardness:HRC40 ST-15
 125mm 材质 Material:302 硬度 Hardness:HRC40 ST-16	 120mm 材质 Material:302 硬度 Hardness:HRC40 ST-17	 120mm 材质:导电塑料 Mat. Conductive plastic 93301	 120mm 材质:导电塑料 Mat. Conductive plastic 93302
 120mm 材质:导电塑料 Mat. Conductive plastic 93303	 120mm 材质:导电塑料 Mat. Conductive plastic 93305	 120mm 材质:导电塑料 Mat. Conductive plastic 93306	 120mm 材质:导电塑料 Mat. Conductive plastic 93308



防静电办公用品  
ESD Office Supplies

图片 Picture	型号 Model	名称 Name	规格 Specification
	LN-F15001	防静电文件袋 ESD Envelope File Bag	尺寸 Size A4 表面电阻 Surface resistance: $10^7-10^{11} \Omega$
	LN-F15002	防静电鼠标垫 ESD Mouse Pad	尺寸 Size: 18 x 22cm 表面电阻 Surface resistance: $10^6-10^9 \Omega$
	LN-F15003	防静电计算器 ESD Calculator	尺寸 Size: 12 x 15cm 表面电阻 Surface resistance: $10^5-10^9 \Omega$
	LN-F15004	防静电鼠标 ESD Mouse	表面电阻 Surface resistance: $10^5-10^9 \Omega$
	LN-F15005	防静电键盘 ESD Keyboard	表面电阻 Surface resistance: $10^5-10^9 \Omega$
	LN-F15007	防静电剪刀 Antistatic Scissors	长 Length: 18cm 表面电阻 Surface resistance: $10^5-10^9 \Omega$
	LN-F15009-3	防静电胶带座 ESD Adhesive Tape Holder	尺寸 Size: 105*49*57mm 表面阻值 Surface resistance: $10^5-10^9 \Omega$
	LN-F15011	防静电美工刀 ESD Cutters	表面电阻 Surface resistance: $10^5-10^8 \Omega$
	LN-F15012	防静电写字板 ESD A4 Tablet	尺寸 Size: A4 表面电阻 Surface resistance: $10^5-10^9 \Omega$
	LN-F15023	防静电封箱器 ESD Sealing Device	尺寸 Size : 1.5inch/ 2inch width. 表面阻值 Surface resistance: $10^5-10^9 \Omega$
	LN-F15017	防静电圆珠笔 ESD Ball-Point Pen	表面电阻 Surface resistance: $10^5-10^9 \Omega$
	LN-F15021	防静电工具箱 ESD Toolkit	尺寸 Size: 360mm x 200mm x 160mm 表面电阻 Surface resistance: $10^5-10^9 \Omega$
	LN-F15024	防静电方形垃圾桶 ESD Square Waste Bin	尺寸 Size: 280 x 210 x 310mm , 15L 表面电阻 Surface resistance: $10^5-10^9 \Omega$
	LN-F15028	防静电垃圾桶带盖 ESD Waste Bin with Cover	尺寸 Size: 460 x 320 x 750mm, 60L 表面电阻 Surface resistance: $10^4-10^{11} \Omega$
	LN-F15029	防静电垃圾桶带盖 ESD Waste Bin with Cover	尺寸 Size: 1080X760X600mm 240L 表面电阻: Surface resistance: $10^4-10^{11} \Omega$



台式离子风机  
Bench top Ionizing Air Blower



LN-S001

性能 Performance	参数 Specifications	性能 Performance	参数 Specifications
操作电压 Operating Voltage	110v/60Hz 220V/50Hz	气流面积 Air Coverage	30cm×30cm
耗电流量 Current Draw	0.25A /0.12A	风量 Air Volume	45~110CFM
操作温度 Operating Temperature	32°F (0°C)-122°F(50°C)	离子平衡 Ion Balance	0V±10V
外箱尺寸 Size	190mm(L) ×95mm(W) ×260mm(H)		

卧式离子风机  
Horizontal Ionizing Air Blower



LN-S020

性能 Performance	参数 Specifications	性能 Performance	参数 Specifications
操作电压 Operating Voltage	110v/60Hz 220V/50Hz	气流面积 Air Coverage	60cm×120cm
耗电流量 Current Draw	3.2A/1.6A	风量 Air Volume	70-120CFM
操作温度 Operating Temperature	32°F (0°C)-122°F(50°C)	离子平衡 Ion Balance	0V±10V
外箱尺寸 Size	460mm(L) ×225mm(W) ×190mm(H)		

挂式离子风机  
Hanging Ionizing Air Blower



LN-S002



LN-S003



LN-S1104

型号 Model	LN-S002	LN-S003	LN-S1104
操作电压 Operating Voltage	110v/60Hz or 220V/50Hz		
耗电流量 Current Draw	0.9A/0.4A	1.25A/0.62A	1.3A/0.65A
操作温度 Operating Temperature	32°F (0°C)-122°F(50°C)		
气流面积 Air Coverage	40cm×90cm	40cm×120cm	40cm×120cm
风量 Air Volume	80-220CFM	120-330CFM	160-330CFM
离子平衡 Ion Balance	0V±10V	0V±10V	0V±10V
外箱尺寸 Size	600mm(L) ×184mm(W) ×110mm(H)	1100mm(L) ×184mm(W) ×110mm(H)	1100mm(L) ×184mm(W) ×110mm(H)

离子风枪加电源  
Ionizing Air Gun With Power Supply



LN-S004

LN-S007

性能 Performance	参数 Specifications	性能 Performance	参数 Specifications
操作电压 Operating Voltage	4.6KV(LN-S007)	重量 Weight	0.5KG
耗电流量 Current Consumption	350 uA	高压电线 HV cable length	3m
操作温度 Operating Temperature	32°F (0°C)-122°F(50°C)	气流速度 Operating air velocity	10m/sec



表面电阻测试仪  
Surface Resistance Tester



LN-S030

型号 Model	LN-S030
操作电压 Operating Voltage	9V DC
尺寸 Size	137mm×76mm×30mm
工作时间 Work Time	40 h
重量 Weight	120g
相对湿度 Relative Humidity	0%-90%RH
操作温度 Operating Temperature	0°C-50°C

手腕带测试仪  
Wrist Strap Tester



LN-S035

型号 Model	LN-S035
尺寸 Size	70mm×256mm×100mm
重量 Weight	120g
相对湿度 Relative Humidity	0%-90%RH
操作温度 Operating Temperature	0°C-31°C

吸烟仪  
Smoke Absorber



LN-6601

型号 Model	LN-6601
静压 Static Pressure	2400Pa
气流 Airflow	120m³/h
系统流动 (包括过滤机制) System flow (including filter mechanism)	100m³/h
过滤效果 Filtering Efficiency	0.3µm 99.97%
功率 Power Consumption	120W
噪音 Noise	≤60dB
电压 Voltage	AC 110v or 220V
尺寸 Dimensions	400(L)×230(W)×350(H)mm
重量 Weight	About 13.4kg

手腕带在线测试仪  
Wrist Strap online monitor



518-1



518-2

型号 Model	518-1	518-2
输出 Output	AC6V 0.3A	AC6V 0.3A
功率 Power consumption	1.8W	1.8W
工作时间 Size	61mm*58mm*28mm	110mm*58mm*28mm
重量 Weight	62g	110g
精度 Precision	1.4MΩ±5%	1.4MΩ±5%
配件 Accessory	电源适配器-1个 接地线-1根 AC power adapter-1 unit Grounding cord-1 pc	电源适配器-1个 接地线-2根 AC power adapter-1 unit Grounding cord-2 pcs

人体综合测试仪  
Wrist Strap/Footwear Tester



LN-492E

型号 Model	LN-492E
电压电源 Voltage	9V电池battery (8-12VDC/100mA)
精度 Precision	±10%
测试仪主机尺寸 Tester Host Size	160x100x40mm
脚踏板尺寸 Foot Pedal Size	480x360x25mm
总重量 Weight	净重NW 7.2kg, 毛重GW 9.5kg



## Work shop and Projects

生产车间和生产案例

