

## 18-75V to 5V 20A Isolated DC-DC Converter

### Design Features

- \* Design meeting by CE/RoHS
- \* Mount in almost any location
- \* Compact and light weight
- \* 100% full load burn-in test
- \* Short circuit protection
- \* Over temperature protection
- \* Advanced switch mode design
- \* Isolated between input & output
- \* Waterproof, Dust-proof, Shockproof
- \* Low voltage protection
- \* Over load protection
- \* 2 years limited warranty

### Applications

- \* Industrial
- \* Electromotor
- \* Logging Vehicles
- \* Alternative Energy
- \* Telecommunications
- \* LED market etc.
- \* Boat & Yacht
- \* Golf Cart & Forklift



Model No.		WGI20-24S05M	WGI20-48S05M
Input	Rated voltage	24V	48V
	Voltage range	18-36V	36-75V
	Efficiency	90%	
	Positive type	Terminal	
	Negative type	Terminal	
	Ignition wire (enable pin)	Optional	
Output	Voltage	5V	
	Current	0 ~ 20A	
	Max. rated power	100W	
	Voltage regulation	≤1%	
	Load regulation	≤2%	
	No load loss	6mA	5mA
	Ripple & noise	22-150mVp-p	
	Positive type	Terminal	
Negative type	Terminal		
Environment	Working temperature	-40°C ~ +80°C	
	Working humidity	10% ~ 90% RH	
	Storage temperature	-40°C ~ +85°C	
Function	Waterproof	IP67	
	Short circuit protection	YES	
	Over load protection	YES	
	Over temperature protection	YES	
	Low voltage protection	YES	
Mechanical	Weight	≤ 290g	
	Size	74*74*29.5mm	
Other	Shell material	Die-cast aluminum	
	Packaging	White box	

## 18-90V to 12V 10A Isolated DC-DC Converter

### Design Features

- \* Design meeting by CE/RoHS
- \* Mount in almost any location
- \* Compact and light weight
- \* 100% full load burn-in test
- \* Short circuit protection
- \* Over temperature protection
- \* Advanced switch mode design
- \* Isolated between input & output
- \* Waterproof, Dust-proof, Shockproof
- \* Low voltage protection
- \* Over load protection
- \* 2 years limited warranty

### Applications

- \* Industrial
- \* Electromotor
- \* Logging Vehicles
- \* Alternative Energy
- \* Telecommunications
- \* LED market etc.
- \* Boat & Yacht
- \* Golf Cart & Forklift



Model No.		WGI10-24S12M	WGI10-48S12M	WGI10-72S12M
Input	Rated voltage	24V		72V
	Voltage range	18-36V		36-90V
	Efficiency	92%		93%
	Positive type	Terminal		
	Negative type	Terminal		
	Ignition wire (enable pin)	Optional		
Output	Voltage	12V		
	Current	0 ~ 10A		
	Max. rated power	120W		
	Voltage regulation	≤1%		
	Load regulation	≤2%		
	No load loss	15mA	10mA	15mA
	Ripple & noise	44-250mVp-p	22-250mVp-p	22-250mVp-p
	Positive type	Terminal		
Negative type	Terminal			
Environment	Working temperature	-40°C ~ +80°C		
	Working humidity	10% ~ 90% RH		
	Storage temperature	-40°C ~ +85°C		
Function	Waterproof	IP67		
	Short circuit protection	YES		
	Over load protection	YES		
	Over temperature protection	YES		
	Low voltage protection	YES		
Mechanical	Weight	≤ 290g		
	Size	74*74*29.5mm		
Other	Shell material	Die-cast aluminum		
	Packaging	White box		

## 18-75V to 24V 5A Isolated DC-DC Converter

### Design Features

- \* Design meeting by CE/RoHS
- \* Mount in almost any location
- \* Compact and light weight
- \* 100% full load burn-in test
- \* Short circuit protection
- \* Over temperature protection
- \* Advanced switch mode design
- \* Isolated between input & output
- \* Waterproof, Dust-proof, Shockproof
- \* Low voltage protection
- \* Over load protection
- \* 2 years limited warranty

### Applications

- \* Industrial
- \* Electromotor
- \* Logging Vehicles
- \* Alternative Energy
- \* Telecommunications
- \* LED market etc.
- \* Boat & Yacht
- \* Golf Cart & Forklift



Model No.		WGI05-24S24M	WGI05-48S24M
Input	Rated voltage	24V	
	Voltage range	18-36V	
	Efficiency	93%	
	Positive type	Terminal	
	Negative type	Terminal	
	Ignition wire (enable pin)	Optional	
Output	Voltage	24V	
	Current	0 ~ 5A	
	Max. rated power	120W	
	Voltage regulation	≤1%	
	Load regulation	≤2%	
	No load loss	24mA	20mA
	Ripple & noise	14-300mVp-p	18-30p0mVp-p
	Positive type	Terminal	
Negative type	Terminal		
Environment	Working temperature	-40°C ~ +80°C	
	Working humidity	10% ~ 90% RH	
	Storage temperature	-40°C ~ +85°C	
Function	Waterproof	IP67	
	Short circuit protection	YES	
	Over load protection	YES	
	Over temperature protection	YES	
	Low voltage protection	YES	
Mechanical	Weight	≤ 290g	
	Size	74*74*29.5mm	
Other	Shell material	Die-cast aluminum	
	Packaging	White box	

## 12V/24V to 5V 3A DC-DC Buck Converter

### Design Features

- \* Design meeting by CE/RoHS
- \* Mount in almost any location
- \* Compact and light weight
- \* 100% full load burn-in test
- \* Short circuit protection
- \* Reverse polarity protection
- \* Advanced switch mode design
- \* Non-isolated between input & output
- \* Waterproof, Dust-proof, Shockproof
- \* Low voltage protection
- \* Over load protection
- \* 1 year limited warranty

### Applications

- \* Industrial
- \* Electromotor
- \* Logging Vehicles
- \* Alternative Energy
- \* Telecommunications
- \* LED market etc.
- \* Boat & Yacht
- \* Golf Cart & Forklift



Model No.		WG-1224S0503
Input	Rated voltage	12V/24V
	Voltage range	8-32V
	Efficiency	90-91%
	Positive cable length (red)	16-17cm
	Negative cable length (black)	16-17cm
Output	Voltage	5V
	Current	0 ~ 3A
	Max. rated power	15W
	Voltage regulation	≤1%
	Load regulation	≤2%
	No load loss	0.1W
	Ripple & noise	30mVp-p
	Positive cable length (yellow)	16-17cm
Negative cable length (black)	16-17cm	
Environment	Working temperature	-35°C ~ +80°C
	Working humidity	10% ~ 90% RH
	Storage temperature	-40°C ~ +85°C
Function	Waterproof	IP67
	Short circuit protection	YES
	Over load protection	YES
	Reversing polarity	YES
	Over temperature protection	YES
	Low voltage protection	YES
Mechanical	Weight	≤ 40g
	Size	63*27*14mm
Other	Shell material	ABS flame retardant plastic
	Packaging	Anti-static bag

## 8-50V/10-80V to 5V 3A DC-DC Buck Converter

### Design Features

- \* Design meeting by CE/RoHS
- \* Mount in almost any location
- \* Compact and light weight
- \* 100% full load burn-in test
- \* Short circuit protection
- \* Over temperature protection
- \* Advanced switch mode design
- \* Non-isolated between input & output
- \* Waterproof, Dust-proof, Shockproof
- \* Low voltage protection
- \* Over load protection
- \* 1 year limited warranty

### Applications

- \* Industrial
- \* Electromotor
- \* Logging Vehicles
- \* Alternative Energy
- \* Telecommunications
- \* LED market etc.
- \* Boat & Yacht
- \* Golf Cart & Forklift



Model No.		WG8-50S0503	WG10-80S0503
Input	Rated voltage	12V/24V/36V	12V/24V/36V/48V/60V
	Voltage range	8-50V	10-80V
	Efficiency	91%	
	Positive cable length (red)	16-17cm	
	Negative cable length (black)	16-17cm	
Output	Voltage	5V	
	Current	0 ~ 3A	
	Max. rated power	15W	
	Voltage regulation	≤1%	
	Load regulation	≤2%	
	No load loss	0.15W	
	Ripple & noise	22mVp-p	
	Positive cable length (yellow)	16-17cm	
	Negative cable length (black)	16-17cm	
Environment	Working temperature	-35°C ~ +80°C	
	Working humidity	10% ~ 90% RH	
	Storage temperature	-40°C ~ +85°C	
Function	Waterproof	IP67	
	Short circuit protection	YES	
	Over load protection	YES	
	Over temperature protection	YES	
	Low voltage protection	YES	
Mechanical	Weight	≤ 55g	
	Size	65*25*20mm	
Other	Shell material	Aluminum	
	Packaging	Anti-static bag	



## 12V/24V to 5V 5A 10A DC-DC Buck Converter

### Design Features

- \* Design meeting by CE/RoHS
- \* Mount in almost any location
- \* Compact and light weight
- \* 100% full load burn-in test
- \* Short circuit protection
- \* Over temperature protection
- \* Advanced switch mode design
- \* Non-isolated between input & output
- \* Waterproof, Dust-proof, Shockproof
- \* Low voltage protection
- \* Over load protection
- \* 1 year limited warranty

### Applications

- \* Industrial
- \* Electromotor
- \* Logging Vehicles
- \* Alternative Energy
- \* Telecommunications
- \* LED market etc.
- \* Boat & Yacht
- \* Golf Cart & Forklift



Model No.		WG-1224S0505P	WG-1224S0510P
Input	Rated voltage	12V/24V	
	Voltage range	8-36V	
	Efficiency	93%	92%
	Positive cable length (red)	16-17cm	
	Negative cable length (black)	16-17cm	
Output	Voltage	5V	
	Current	0 ~ 5A	0 ~ 10A
	Max. rated power	25W	50W
	Voltage regulation	≤1%	
	Load regulation	≤2%	
	No load loss	15mA	20mA
	Ripple & noise	50mVp-p	100mVp-p
	Positive cable length (yellow)	16-17cm	
	Negative cable length (black)	16-17cm	
Environment	Working temperature	-35°C ~ +80°C	
	Working humidity	10% ~ 90% RH	
	Storage temperature	-40°C ~ +85°C	
Function	Waterproof	IP67	
	Short circuit protection	YES	
	Over load protection	YES	
	Over temperature protection	YES	
	Low voltage protection	YES	
Mechanical	Weight	≤ 68g	
	Size	63*32*18mm	
Other	Shell material	ABS flame retardant plastic	
	Packaging	Anti-static bag	

## 12V/24V to 5V 10A 20A DC-DC Buck Converter

### Design Features

- \* Design meeting by CE/RoHS
- \* Mount in almost any location
- \* Compact and light weight
- \* 100% full load burn-in test
- \* Short circuit protection
- \* Over temperature protection
- \* Advanced switch mode design
- \* Non-isolated between input & output
- \* Waterproof, Dust-proof, Shockproof
- \* Low voltage protection
- \* Over load protection
- \* 1 year limited warranty

### Applications

- \* Industrial
- \* Electromotor
- \* Logging Vehicles
- \* Alternative Energy
- \* Telecommunications
- \* LED market etc.
- \* Boat & Yacht
- \* Golf Cart & Forklift



Model No.		WG-1224S0510	WG-1224S0520Z
Input	Rated voltage	12V/24V	
	Voltage range	8-36V	
	Efficiency	92%	93%
	Positive cable length (red)	16-17cm	
	Negative cable length (black)	16-17cm	
Output	Voltage	5V	
	Current	0 ~ 10A	0 ~ 20A
	Max. rated power	50W	100W
	Voltage regulation	≤1%	
	Load regulation	≤2%	
	No load loss	20mA	80mA
	Ripple & noise	100mVp-p	100mVp-p
	Positive cable length (yellow)	16-17cm	
Negative cable length (black)	16-17cm		
Environment	Working temperature	-40°C ~ +80°C	
	Working humidity	10% ~ 90% RH	
	Storage temperature	-40°C ~ +85°C	
Function	Waterproof	IP67	
	Short circuit protection	YES	
	Over load protection	YES	
	Over temperature protection	YES	
	Low voltage protection	YES	
Mechanical	Weight	≤ 120g	
	Size	64*57*22mm	
Other	Shell material	Die-cast aluminum	
	Packaging	White box	

## 12V/24V to 5V 20A 30A DC-DC Buck Converter

### Design Features

- \* Design meeting by CE/RoHS
- \* Mount in almost any location
- \* Compact and light weight
- \* 100% full load burn-in test
- \* Short circuit protection
- \* Over temperature protection
- \* Advanced switch mode design
- \* Non-isolated between input & output
- \* Waterproof, Dust-proof, Shockproof
- \* Low voltage protection
- \* Over load protection
- \* 1 year limited warranty

### Applications

- \* Industrial
- \* Electromotor
- \* Logging Vehicles
- \* Alternative Energy
- \* Telecommunications
- \* LED market etc.
- \* Boat & Yacht
- \* Golf Cart & Forklift



Model No.		WG-1224S0520	WG-1224S0530
Input	Rated voltage	12V/24V	
	Voltage range	8-36V	
	Efficiency	93%	91.6%
	Positive cable length (red)	16-17cm	
	Negative cable length (black)	16-17cm	
Output	Voltage	5V	
	Current	0 ~ 20A	0 ~ 30A
	Max. rated power	100W	150W
	Voltage regulation	≤1%	
	Load regulation	≤2%	
	No load loss	80mA	41mA
	Ripple & noise	100mVp-p	92mVp-p
	Positive cable length (yellow)	16-17cm	
	Negative cable length (black)	16-17cm	
Environment	Working temperature	-40°C ~ +80°C	
	Working humidity	10% ~ 90% RH	
	Storage temperature	-40°C ~ +85°C	
Function	Waterproof	IP67	
	Short circuit protection	YES	
	Over load protection	YES	
	Over temperature protection	YES	
	Low voltage protection	YES	
Mechanical	Weight	≤ 300g	
	Size	74*74*32mm	
Other	Shell material	Die-cast aluminum	
	Packaging	White box	



## 12V/24V to 5V 30A DC-DC Buck Converter

### Design Features

- \* Design meeting by CE/RoHS
- \* Mount in almost any location
- \* Compact and light weight
- \* 100% full load burn-in test
- \* Short circuit protection
- \* Over temperature protection
- \* Advanced switch mode design
- \* Non-isolated between input & output
- \* Waterproof, Dust-proof, Shockproof
- \* Low voltage protection
- \* Over load protection
- \* 2 years limited warranty

### Applications

- \* Industrial
- \* Electromotor
- \* Logging Vehicles
- \* Alternative Energy
- \* Telecommunications
- \* LED market etc.
- \* Boat & Yacht
- \* Golf Cart & Forklift



Model No.	WG-1224S0530M	
Input	Rated voltage	12V/24V
	Voltage range	8-36V
	Efficiency	91.6%
	Positive type	Terminal
	Negative type	Terminal
	Ignition wire (enable pin)	Optional
Output	Voltage	5V
	Current	0 ~ 30A
	Max. rated power	150W
	Voltage regulation	≤1%
	Load regulation	≤2%
	No load loss	41mA
	Ripple & noise	92mVp-p
	Positive type	Terminal
Negative type	Terminal	
Environment	Working temperature	-40°C ~ +80°C
	Working humidity	10% ~ 90% RH
	Storage temperature	-40°C ~ +85°C
Function	Waterproof	IP67
	Short circuit protection	YES
	Over load protection	YES
	Over temperature protection	YES
	Low voltage protection	YES
Mechanical	Weight	≤ 290g
	Size	74*74*29.5mm
Other	Shell material	Die-cast aluminum
	Packaging	White box



## 12V/24V to 5V 20A 30A DC-DC Buck Converter

### Design Features

- \* Design meeting by CE/RoHS
- \* Mount in almost any location
- \* Compact and light weight
- \* 100% full load burn-in test
- \* Short circuit protection
- \* Over temperature protection
- \* Advanced switch mode design
- \* Non-isolated between input & output
- \* Waterproof, Dust-proof, Shockproof
- \* Low voltage protection
- \* Over load protection
- \* 2 years limited warranty

### Applications

- \* Industrial
- \* Electromotor
- \* Logging Vehicles
- \* Alternative Energy
- \* Telecommunications
- \* LED market etc.
- \* Boat & Yacht
- \* Golf Cart & Forklift

Model No.	WG-1224S0520L	WG-1224S0530L	
Input	Rated voltage		12V/24V
	Voltage range		8-36V
	Efficiency		91.7%
	Positive type		Terminal
	Negative type		Terminal
	Ignition wire (enable pin)		Optional
Output	Voltage		5V
	Current		0 ~ 20A
	Max. rated power		100W
	Voltage regulation		≤1%
	Load regulation		≤2%
	No load loss		22mA
	Ripple & noise		45mVp-p
	Positive type		Terminal
Negative type		Terminal	
Environment	Working temperature		-40°C ~ +80°C
	Working humidity		10% ~ 90% RH
	Storage temperature		-40°C ~ +85°C
Function	Waterproof		IP65
	Short circuit protection		YES
	Over load protection		YES
	Over temperature protection		YES
	Reversing polarity protection		YES
	Low voltage protection		YES
Mechanical	Weight		≤ 260g
	Size		110*70*23mm
Other	Shell material		Die-cast aluminum
	Packaging		Color box

## 12V/24V to 5V 40A 50A DC-DC Buck Converter

### Design Features

- \* Design meeting by CE/RoHS
- \* Mount in almost any location
- \* Compact and light weight
- \* 100% full load burn-in test
- \* Short circuit protection
- \* Over temperature protection
- \* Advanced switch mode design
- \* Non-isolated between input & output
- \* Waterproof, Dust-proof, Shockproof
- \* Low voltage protection
- \* Over load protection
- \* 1 year limited warranty

### Applications

- \* Industrial
- \* Electromotor
- \* Logging Vehicles
- \* Alternative Energy
- \* Telecommunications
- \* LED market etc.
- \* Boat & Yacht
- \* Golf Cart & Forklift



Model No.		WG-1224S0540	WG-1224S0550Z
Input	Rated voltage	12V/24V	
	Voltage range	10-36V	
	Efficiency	94%	88%
	Positive cable length (red)	16-17cm	
	Negative cable length (black)	16-17cm	
Output	Voltage	5V	
	Current	0 ~ 40A	0 ~ 50A
	Max. rated power	200W	250W
	Voltage regulation	≤1%	
	Load regulation	≤2%	
	No load loss	70mA	20mA
	Ripple & noise	230mVp-p	50-100mVp-p
	Positive cable length (white)	16-17cm	
	Negative cable length (black)	16-17cm	
Environment	Working temperature	-40°C ~ +80°C	
	Working humidity	10% ~ 90% RH	
	Storage temperature	-40°C ~ +85°C	
Function	Waterproof	IP67	
	Short circuit protection	YES	
	Over load protection	YES	
	Over temperature protection	YES	
	Low voltage protection	YES	
Mechanical	Weight	≤ 550g	
	Size	100*80*39mm	
Other	Shell material	Die-cast aluminum	
	Packaging	White box	

## 12V/24V to 5V 60A DC-DC Buck Converter

### Design Features

- \* Design meeting by CE/RoHS
- \* Mount in almost any location
- \* Compact and light weight
- \* 100% full load burn-in test
- \* Short circuit protection
- \* Over temperature protection
- \* Advanced switch mode design
- \* Non-isolated between input & output
- \* Waterproof, Dust-proof, Shockproof
- \* Low voltage protection
- \* Over load protection
- \* 2 years limited warranty

### Applications

- \* Industrial
- \* Electromotor
- \* Logging Vehicles
- \* Alternative Energy
- \* Telecommunications
- \* LED market etc.
- \* Boat & Yacht
- \* Golf Cart & Forklift



Model No.		WG-1224S0560M
Input	Rated voltage	12V/24V
	Voltage range	9-36V
	Efficiency	94.1%
	Positive type	Terminal
	Negative type	Terminal
	Ignition wire (enable pin)	Optional
Output	Voltage	5V
	Current	0 ~ 60A
	Max. rated power	300W
	Voltage regulation	≤1%
	Load regulation	≤2%
	No load loss	59mA
	Ripple & noise	92-200mVp-p
	Positive type	Terminal
Negative type	Terminal	
Environment	Working temperature	-40°C ~ +80°C
	Working humidity	10% ~ 90% RH
	Storage temperature	-40°C ~ +85°C
Function	Waterproof	IP67
	Short circuit protection	YES
	Over load protection	YES
	Over temperature protection	YES
	Low voltage protection	YES
Mechanical	Weight	≤ 580g
	Size	100*80*36mm
Other	Shell material	Die-cast aluminum
	Packaging	White box

## 24V to 12V 1.5A 3A 5A DC-DC Buck Converter

### Design Features

- \* Design meeting by CE/RoHS
- \* Mount in almost any location
- \* Compact and light weight
- \* 100% full load burn-in test
- \* Short circuit protection
- \* Over temperature protection
- \* Advanced switch mode design
- \* Non-isolated between input & output
- \* Waterproof, Dust-proof, Shockproof
- \* Low voltage protection
- \* Over load protection
- \* 1 year limited warranty

### Applications

- \* Industrial
- \* Electromotor
- \* Logging Vehicles
- \* Alternative Energy
- \* Telecommunications
- \* LED market etc.
- \* Boat & Yacht
- \* Golf Cart & Forklift



Model No.		WG-24S121R5	WG-24S1203	WG-24S1205P
Input	Rated voltage	24V		
	Voltage range	18-36V		
	Efficiency	91%	91%	95%
	Positive cable length (red)	16-17cm		
	Negative cable length (black)	16-17cm		
Output	Voltage	12V		
	Current	0 ~ 1.5A	0 ~ 3A	0 ~ 5A
	Max. rated power	18W	36W	60W
	Voltage regulation	≤1%		
	Load regulation	≤2%		
	No load loss	1mA	1mA	2mA
	Ripple & noise	22mVp-p	22mVp-p	50mVp-p
	Positive cable length (yellow)	16-17cm		
	Negative cable length (black)	16-17cm		
Environment	Working temperature	-40°C ~ +80°C		
	Working humidity	10% ~ 90% RH		
	Storage temperature	-40°C ~ +85°C		
Function	Waterproof	IP67		
	Short circuit protection	YES		
	Over load protection	YES		
	Over temperature protection	YES		
	Low voltage protection	YES		
Mechanical	Weight	≤ 68g		
	Size	63*32*18mm		
Other	Shell material	ABS flame retardant plastic		
	Packaging	Anti-static bag		





## 15-80V to 12V 2A DC-DC Buck Converter

### Design Features

- \* Design meeting by CE/RoHS
- \* Mount in almost any location
- \* Compact and light weight
- \* 100% full load burn-in test
- \* Short circuit protection
- \* Over temperature protection
- \* Advanced switch mode design
- \* Non-isolated between input & output
- \* Waterproof, Dust-proof, Shockproof
- \* Low voltage protection
- \* Over load protection
- \* 1 year limited warranty

### Applications

- \* Industrial
- \* Electromotor
- \* Logging Vehicles
- \* Alternative Energy
- \* Telecommunications
- \* LED market etc.
- \* Boat & Yacht
- \* Golf Cart & Forklift

Model No.		WG15-50S1203P	WG15-80S1202
Input	Rated voltage	24V/36V	
	Voltage range	15-50V	
	Efficiency	91%	
	Positive cable length (red)	16-17cm	
	Negative cable length (black)	16-17cm	
Output	Voltage	12V	
	Current	0 ~ 3A	0 ~ 2A
	Max. rated power	36W	24W
	Voltage regulation	≤1%	
	Load regulation	≤2%	
	No load loss	1mA	1mA
	Ripple & noise	22mVp-pp-p	22mVp-p
	Positive cable length (yellow)	16-17cm	
	Negative cable length (black)	16-17cm	
Environment	Working temperature	-35°C ~ +80°C	
	Working humidity	10% ~ 90% RH	
	Storage temperature	-40°C ~ +85°C	
Function	Waterproof	IP67	
	Short circuit protection	YES	
	Over load protection	YES	
	Over temperature protection	YES	
	Low voltage protection	YES	
Mechanical	Weight	≤ 68g	
	Size	63*32*18mm	
Other	Shell material	ABS flame retardant plastic	
	Packaging	Anti-static bag	

## 24V to 12V 5A 10A 20A DC-DC Buck Converter

### Design Features

- \* Design meeting by CE/RoHS
- \* Mount in almost any location
- \* Compact and light weight
- \* 100% full load burn-in test
- \* Short circuit protection
- \* Over temperature protection
- \* Advanced switch mode design
- \* Non-isolated between input & output
- \* Waterproof, Dust-proof, Shockproof
- \* Low voltage protection
- \* Over load protection
- \* 1 year limited warranty

### Applications

- \* Industrial
- \* Electromotor
- \* Logging Vehicles
- \* Alternative Energy
- \* Telecommunications
- \* LED market etc.
- \* Boat & Yacht
- \* Golf Cart & Forklift



Model No.		WG-24S1205	WG-24S1210Z	WG-24S1220Z
Input	Rated voltage	24V		
	Voltage range	18-36V		
	Efficiency	96%	95%	95.7%
	Positive cable length (red)	16-17cm		
	Negative cable length (black)	16-17cm		
Output	Voltage	12V		
	Current	0 ~ 5A	0 ~ 10A	0 ~ 20A
	Max. rated power	60W	120W	240W
	Voltage regulation	≤1%		
	Load regulation	≤2%		
	No load loss	2mA	20mA	50mA
	Ripple & noise	60mVp-p	60mVp-p	120mVp-p
	Positive cable length (yellow)	16-17cm		
	Negative cable length (black)	16-17cm		
Environment	Working temperature	-40°C ~ +80°C		
	Working humidity	10% ~ 90% RH		
	Storage temperature	-40°C ~ +85°C		
Function	Waterproof	IP67		
	Short circuit protection	YES		
	Over load protection	YES		
	Over temperature protection	YES		
	Low voltage protection	YES		
Mechanical	Weight	≤ 120g		
	Size	64*57*22mm		
Other	Shell material	Die-cast aluminum		
	Packaging	White box		

## 24V to 12V 20A 30A DC-DC Buck Converter

### Design Features

- \* Design meeting by CE/RoHS
- \* Mount in almost any location
- \* Compact and light weight
- \* 100% full load burn-in test
- \* Short circuit protection
- \* Over temperature protection
- \* Advanced switch mode design
- \* Non-isolated between input & output
- \* Waterproof, Dust-proof, Shockproof
- \* Low voltage protection
- \* Over load protection
- \* 1 year limited warranty

### Applications

- \* Industrial
- \* Electromotor
- \* Logging Vehicles
- \* Alternative Energy
- \* Telecommunications
- \* LED market etc.
- \* Boat & Yacht
- \* Golf Cart & Forklift



Model No.		WG-24S1220	WG-24S1230Z
Input	Rated voltage	24V	
	Voltage range	18-36V	
	Efficiency	95.5%	96%
	Positive cable length (red)	16-17cm	
	Negative cable length (black)	16-17cm	
Output	Voltage	12V	
	Current	0 ~ 20A	0 ~ 30A
	Max. rated power	240W	360W
	Voltage regulation	≤1%	
	Load regulation	≤2%	
	No load loss	50mA	51mA
	Ripple & noise	120mVp-p	100mVp-p
	Positive cable length (yellow)	16-17cm	
	Negative cable length (black)	16-17cm	
Environment	Working temperature	-40°C ~ +80°C	
	Working humidity	10% ~ 90% RH	
	Storage temperature	-40°C ~ +85°C	
Function	Waterproof	IP67	
	Short circuit protection	YES	
	Over load protection	YES	
	Over temperature protection	YES	
	Low voltage protection	YES	
Mechanical	Weight	≤ 300g	
	Size	74*74*32mm	
Other	Shell material	Die-cast aluminum	
	Packaging	White box	

## 24V to 12V 30A DC-DC Buck Converter

### Design Features

- \* Design meeting by CE/RoHS
- \* Mount in almost any location
- \* Compact and light weight
- \* 100% full load burn-in test
- \* Short circuit protection
- \* Over temperature protection
- \* Advanced switch mode design
- \* Non-isolated between input & output
- \* Waterproof, Dust-proof, Shockproof
- \* Low voltage protection
- \* Over load protection
- \* 2 years limited warranty

### Applications

- \* Industrial
- \* Electromotor
- \* Logging Vehicles
- \* Alternative Energy
- \* Telecommunications
- \* LED market etc.
- \* Boat & Yacht
- \* Golf Cart & Forklift



Model No.		WG-24S1230M
Input	Rated voltage	24V
	Voltage range	18-36V
	Efficiency	96%
	Positive type	Terminal
	Negative type	Terminal
	Ignition wire (enable pin)	Optional
Output	Voltage	12V
	Current	0 ~ 30A
	Max. rated power	360W
	Voltage regulation	≤1%
	Load regulation	≤2%
	No load loss	51mA
	Ripple & noise	100mVp-p
	Positive type	Terminal
Negative type	Terminal	
Environment	Working temperature	-40°C ~ +80°C
	Working humidity	10% ~ 90% RH
	Storage temperature	-40°C ~ +85°C
Function	Waterproof	IP67
	Short circuit protection	YES
	Over load protection	YES
	Over temperature protection	YES
	Low voltage protection	YES
Mechanical	Weight	≤ 290g
	Size	74*74*29.5mm
Other	Shell material	Die-cast aluminum
	Packaging	White box

## 24V to 12V 20A 30A DC-DC Buck Converter

### Design Features

- \* Design meeting by CE/RoHS
- \* Mount in almost any location
- \* Compact and light weight
- \* 100% full load burn-in test
- \* Short circuit protection
- \* Over temperature protection
- \* Advanced switch mode design
- \* Non-isolated between input & output
- \* Waterproof, Dust-proof, Shockproof
- \* Low voltage protection
- \* Over load protection
- \* 2 years limited warranty

### Applications

- \* Industrial
- \* Electromotor
- \* Logging Vehicles
- \* Alternative Energy
- \* Telecommunications
- \* LED market etc.
- \* Boat & Yacht
- \* Golf Cart & Forklift



Model No.		WG-24S1220L	WG-24S1230L
Input	Rated voltage	12V/24V	
	Voltage range	18-36V	
	Efficiency	95.8%	95.5%
	Positive type	Terminal	
	Negative type	Terminal	
	Ignition wire (enable pin)	Optional	
Output	Voltage	12V	
	Current	0 ~ 20A	0 ~ 30A
	Max. rated power	240W	360W
	Voltage regulation	≤1%	
	Load regulation	≤2%	
	No load loss	45mA	40mA
	Ripple & noise	70mVp-p	70mVp-p
	Positive type	Terminal	
Negative type	Terminal		
Environment	Working temperature	-40°C ~ +80°C	
	Working humidity	10% ~ 90% RH	
	Storage temperature	-40°C ~ +85°C	
Function	Waterproof	IP65	
	Short circuit protection	YES	
	Over load protection	YES	
	Over temperature protection	YES	
	Reversing polarity protection	YES	
	Low voltage protection	YES	
Mechanical	Weight	≤ 260g	
	Size	110*70*23mm	
Other	Shell material	Die-cast aluminum	
	Packaging	Color box	



## 24V to 12V 40A DC-DC Buck Converter

### Design Features

- \* Design meeting by CE/RoHS
- \* Mount in almost any location
- \* Compact and light weight
- \* 100% full load burn-in test
- \* Short circuit protection
- \* Over temperature protection
- \* Advanced switch mode design
- \* Non-isolated between input & output
- \* Waterproof, Dust-proof, Shockproof
- \* Low voltage protection
- \* Over load protection
- \* 1 year limited warranty

### Applications

- \* Industrial
- \* Electromotor
- \* Logging Vehicles
- \* Alternative Energy
- \* Telecommunications
- \* LED market etc.
- \* Boat & Yacht
- \* Golf Cart & Forklift



Model No.		WG-24S1240
Input	Rated voltage	24V
	Voltage range	18-36V
	Efficiency	97.3%
	Positive cable length (red)	16-17cm
	Negative cable length (black)	16-17cm
Output	Voltage	12V
	Current	0 ~ 40A
	Max. rated power	480W
	Voltage regulation	≤1%
	Load regulation	≤2%
	No load loss	80mA
	Ripple & noise	50-200mVp-p
	Positive cable length (white)	16-17cm
	Negative cable length (black)	16-17cm
Environment	Working temperature	-40°C ~ +80°C
	Working humidity	10% ~ 90% RH
	Storage temperature	-40°C ~ +85°C
Function	Waterproof	IP67
	Short circuit protection	YES
	Over load protection	YES
	Over temperature protection	YES
	Low voltage protection	YES
Mechanical	Weight	≤ 550g
	Size	100*80*39mm
Other	Shell material	Die-cast aluminum
	Packaging	White box

## 24V to 12V 50A 60A DC-DC Buck Converter

### Design Features

- \* Design meeting by CE/RoHS
- \* Mount in almost any location
- \* Compact and light weight
- \* 100% full load burn-in test
- \* Short circuit protection
- \* Over temperature protection
- \* Advanced switch mode design
- \* Non-isolated between input & output
- \* Waterproof, Dust-proof, Shockproof
- \* Low voltage protection
- \* Over load protection
- \* 2 years limited warranty

### Applications

- \* Industrial
- \* Electromotor
- \* Logging Vehicles
- \* Alternative Energy
- \* Telecommunications
- \* LED market etc.
- \* Boat & Yacht
- \* Golf Cart & Forklift



Model No.		WG-24S1250M	WG-24S1260M
Input	Rated voltage	24V	
	Voltage range	18-36V	
	Efficiency	96.9%	97.2%
	Positive type	Terminal	
	Negative type	Terminal	
	Ignition wire (enable pin)	Optional	
Output	Voltage	12V	
	Current	0 ~ 50A	0 ~ 60A
	Max. rated power	600W	720W
	Voltage regulation	≤1%	
	Load regulation	≤2%	
	No load loss	80mA	70mA
	Ripple & noise	50-200mVp-p	56-200mVp-p
	Positive type	Terminal	
Negative type	Terminal		
Environment	Working temperature	-40°C ~ +80°C	
	Working humidity	10% ~ 90% RH	
	Storage temperature	-40°C ~ +85°C	
Function	Waterproof	IP67	
	Short circuit protection	YES	
	Over load protection	YES	
	Over temperature protection	YES	
	Low voltage protection	YES	
Mechanical	Weight	≤ 580g	
	Size	100*80*36mm	
Other	Shell material	Die-cast aluminum	
	Packaging	White box	

## 24V to 12V 50A 60A DC-DC Buck Converter

### Design Features

- \* Design meeting by CE/RoHS
- \* Mount in almost any location
- \* Compact and light weight
- \* 100% full load burn-in test
- \* Short circuit protection
- \* Over temperature protection
- \* Advanced switch mode design
- \* Non-isolated between input & output
- \* Waterproof, Dust-proof, Shockproof
- \* Low voltage protection
- \* Over load protection
- \* 1 year limited warranty

### Applications

- \* Industrial
- \* Electromotor
- \* Logging Vehicles
- \* Alternative Energy
- \* Telecommunications
- \* LED market etc.
- \* Boat & Yacht
- \* Golf Cart & Forklift



Model No.		WG-24S1250	WG-24S1260
Input	Rated voltage	24V	
	Voltage range	18-36V	
	Efficiency	92%	92%
	Positive type	Terminal	
	Negative type	Terminal	
	Ignition wire (enable pin)	Optional	
Output	Voltage	12V	
	Current	0 ~ 50A	0 ~ 60A
	Max. rated power	600W	720W
	Voltage regulation	≤1%	
	Load regulation	≤2%	
	No load loss	70mA	70mA
	Ripple & noise	120mVp-p	120mVp-p
	Positive type	Terminal	
Negative type	Terminal		
Environment	Working temperature	-40°C ~ +80°C	
	Working humidity	10% ~ 90% RH	
	Storage temperature	-40°C ~ +85°C	
Function	Waterproof	IP67	
	Short circuit protection	YES	
	Over load protection	YES	
	Over temperature protection	YES	
	Low voltage protection	YES	
Mechanical	Weight	≤ 1.55kg	
	Size	150*127*63mm	
Other	Shell material	Aluminum	
	Packaging	Brown box	

## 24V to 12V 85A 100A DC-DC Buck Converter

### Design Features

- \* Design meeting by CE/RoHS
- \* Mount in almost any location
- \* Compact and light weight
- \* 100% full load burn-in test
- \* Short circuit protection
- \* Over temperature protection
- \* Advanced switch mode design
- \* Non-isolated between input & output
- \* Waterproof, Dust-proof, Shockproof
- \* Low voltage protection
- \* Over load protection
- \* 2 years limited warranty

### Applications

- \* Industrial
- \* Electromotor
- \* Logging Vehicles
- \* Alternative Energy
- \* Telecommunications
- \* LED market etc.
- \* Boat & Yacht
- \* Golf Cart & Forklift



Model No.		WG-24S1285M	WG-24S12100M
Input	Rated voltage	24V	
	Voltage range	18-36V	
	Efficiency	96.8%	97.3%
	Positive type	Terminal	
	Negative type	Terminal	
	Ignition wire (enable pin)	Optional	
Output	Voltage	12V	
	Current	0 ~ 85A	0 ~ 100A
	Max. rated power	1020W	1200W
	Voltage regulation	≤1%	
	Load regulation	≤2%	
	No load loss	75mA	80mA
	Ripple & noise	48-200mVp-p	48-200mVp-p
	Positive type	Terminal	
Negative type	Terminal		
Environment	Working temperature	-40°C ~ +80°C	
	Working humidity	10% ~ 90% RH	
	Storage temperature	-40°C ~ +85°C	
Function	Waterproof	IP67	
	Short circuit protection	YES	
	Over load protection	YES	
	Over temperature protection	YES	
	Low voltage protection	YES	
Mechanical	Weight	≤ 1.2kg	
	Size	140*120*42.5mm	
Other	Shell material	Die-cast aluminum	
	Packaging	White box	



## 24V to 12V 85A 100A DC-DC Buck Converter

### Design Features

- \* Design meeting by CE/RoHS
- \* Mount in almost any location
- \* Compact and light weight
- \* 100% full load burn-in test
- \* Short circuit protection
- \* Over temperature protection
- \* Advanced switch mode design
- \* Non-isolated between input & output
- \* Waterproof, Dust-proof, Shockproof
- \* Low voltage protection
- \* Over load protection
- \* 1 year limited warranty

### Applications

- \* Industrial
- \* Electromotor
- \* Logging Vehicles
- \* Alternative Energy
- \* Telecommunications
- \* LED market etc.
- \* Boat & Yacht
- \* Golf Cart & Forklift



Model No.		WG-24S1285	WG-24S12100
Input	Rated voltage	24V	
	Voltage range	18-36V	
	Efficiency	92%	92%
	Positive type	Terminal	
	Negative type	Terminal	
	Ignition wire (enable pin)	Optional	
Output	Voltage	12V	
	Current	0 ~ 85A	0 ~ 100A
	Max. rated power	1020W	1200W
	Voltage regulation	≤1%	
	Load regulation	≤2%	
	No load loss	70mA	70mA
	Ripple & noise	120mVp-p	120mVp-p
	Positive type	Terminal	
Negative type	Terminal		
Environment	Working temperature	-40°C ~ +80°C	
	Working humidity	10% ~ 90% RH	
	Storage temperature	-40°C ~ +85°C	
Function	Waterproof	IP67	
	Short circuit protection	YES	
	Over load protection	YES	
	Over temperature protection	YES	
	Low voltage protection	YES	
Mechanical	Weight	≤ 2.3kg	
	Size	220*127*63mm	
Other	Shell material	Aluminum	
	Packaging	Brown box	



## 24V to 13.8V 5A DC-DC Buck Converter

### Design Features

- \* Design meeting by CE/RoHS
- \* Mount in almost any location
- \* Compact and light weight
- \* 100% full load burn-in test
- \* Short circuit protection
- \* Over temperature protection
- \* Advanced switch mode design
- \* Non-isolated between input & output
- \* Waterproof, Dust-proof, Shockproof
- \* Low voltage protection
- \* Over load protection
- \* 1 year limited warranty

### Applications

- \* Industrial
- \* Electromotor
- \* Logging Vehicles
- \* Alternative Energy
- \* Telecommunications
- \* LED market etc.
- \* Boat & Yacht
- \* Golf Cart & Forklift



Model No.		WG-24S13R805
Input	Rated voltage	24V
	Voltage range	18-36V
	Efficiency	93%
	Positive cable length (red)	16-17cm
	Negative cable length (black)	16-17cm
Output	Voltage	13.8V
	Current	0 ~ 5A
	Max. rated power	69W
	Voltage regulation	≤1%
	Load regulation	≤2%
	No load loss	20mA
	Ripple & noise	80mVp-p
	Positive cable length (yellow)	16-17cm
	Negative cable length (black)	16-17cm
Environment	Working temperature	-40°C ~ +80°C
	Working humidity	10% ~ 90% RH
	Storage temperature	-40°C ~ +85°C
Function	Waterproof	IP67
	Short circuit protection	YES
	Over load protection	YES
	Over temperature protection	YES
	Low voltage protection	YES
Mechanical	Weight	≤ 120g
	Size	64*57*22mm
Other	Shell material	Die-cast aluminum
	Packaging	White box

## 24V to 13.8V 10A 15A 20A DC-DC Buck Converter

### Design Features

- \* Design meeting by CE/RoHS
- \* Mount in almost any location
- \* Compact and light weight
- \* 100% full load burn-in test
- \* Short circuit protection
- \* Over temperature protection
- \* Advanced switch mode design
- \* Non-isolated between input & output
- \* Waterproof, Dust-proof, Shockproof
- \* Low voltage protection
- \* Over load protection
- \* 1 year limited warranty

### Applications

- \* Industrial
- \* Electromotor
- \* Logging Vehicles
- \* Alternative Energy
- \* Telecommunications
- \* LED market etc.
- \* Boat & Yacht
- \* Golf Cart & Forklift



Model No.		WG-24S13R810	WG-24S13R815	WG-24S13R820
Input	Rated voltage	24V		
	Voltage range	18-36V		
	Efficiency	96%	95%	95%
	Positive cable length (red)	16-17cm		
	Negative cable length (black)	16-17cm		
Output	Voltage	13.8V		
	Current	0 ~ 10A	0 ~ 15A	0 ~ 20A
	Max. rated power	138W	207W	276W
	Voltage regulation	≤1%		
	Load regulation	≤2%		
	No load loss	20mA	20mA	30mA
	Ripple & noise	100mVp-p	120mVp-p	130mVp-p
	Positive cable length (yellow)	16-17cm		
Negative cable length (black)	16-17cm			
Environment	Working temperature	-40°C ~ +80°C		
	Working humidity	10% ~ 90% RH		
	Storage temperature	-40°C ~ +85°C		
Function	Waterproof	IP67		
	Short circuit protection	YES		
	Over load protection	YES		
	Over temperature protection	YES		
	Low voltage protection	YES		
Mechanical	Weight	≤ 300g		
	Size	74*74*32mm		
Other	Shell material	Die-cast aluminum		
	Packaging	White box		

## 24V to 13.8V 30A 40A DC-DC Buck Converter

### Design Features

- \* Design meeting by CE/RoHS
- \* Mount in almost any location
- \* Compact and light weight
- \* 100% full load burn-in test
- \* Short circuit protection
- \* Over temperature protection
- \* Advanced switch mode design
- \* Non-isolated between input & output
- \* Waterproof, Dust-proof, Shockproof
- \* Low voltage protection
- \* Over load protection
- \* 1 year limited warranty

### Applications

- \* Industrial
- \* Electromotor
- \* Logging Vehicles
- \* Alternative Energy
- \* Telecommunications
- \* LED market etc.
- \* Boat & Yacht
- \* Golf Cart & Forklift



Model No.		WG-24S13R830	WG-24S13R840
Input	Rated voltage	24V	
	Voltage range	18-36V	
	Efficiency	96%	
	Positive cable length (red)	16-17cm	
	Negative cable length (black)	16-17cm	
Output	Voltage	13.8V	
	Current	0 ~ 30A	0 ~ 40A
	Max. rated power	414W	552W
	Voltage regulation	≤1%	
	Load regulation	≤2%	
	No load loss	70mA	
	Ripple & noise	160mVp-p	
	Positive cable length (white)	16-17cm	
	Negative cable length (black)	16-17cm	
Environment	Working temperature	-40°C ~ +80°C	
	Working humidity	10% ~ 90% RH	
	Storage temperature	-40°C ~ +85°C	
Function	Waterproof	IP67	
	Short circuit protection	YES	
	Over load protection	YES	
	Over temperature protection	YES	
	Low voltage protection	YES	
Mechanical	Weight	≤ 550g	
	Size	100*80*39mm	
Other	Shell material	Die-cast aluminum	
	Packaging	White box	

## 24V to 13.8V 50A 60A DC-DC Buck Converter

### Design Features

- \* Design meeting by CE/RoHS
- \* Mount in almost any location
- \* Compact and light weight
- \* 100% full load burn-in test
- \* Short circuit protection
- \* Over temperature protection
- \* Advanced switch mode design
- \* Non-isolated between input & output
- \* Waterproof, Dust-proof, Shockproof
- \* Low voltage protection
- \* Over load protection
- \* 2 years limited warranty

### Applications

- \* Industrial
- \* Electromotor
- \* Logging Vehicles
- \* Alternative Energy
- \* Telecommunications
- \* LED market etc.
- \* Boat & Yacht
- \* Golf Cart & Forklift



Model No.		WG-24S13R850M	WG-24S13R860M
Input	Rated voltage	24V	
	Voltage range	18-36V	
	Efficiency	96.9%	97.2%
	Positive type	Terminal	
	Negative type	Terminal	
	Ignition wire (enable pin)	Optional	
Output	Voltage	13.8V	
	Current	0 ~ 50A	0 ~ 60A
	Max. rated power	690W	828W
	Voltage regulation	≤1%	
	Load regulation	≤2%	
	No load loss	80mA	70mA
	Ripple & noise	50-200mVp-p	56-200mVp-p
	Positive type	Terminal	
Negative type	Terminal		
Environment	Working temperature	-40°C ~ +80°C	
	Working humidity	10% ~ 90% RH	
	Storage temperature	-40°C ~ +85°C	
Function	Waterproof	IP67	
	Short circuit protection	YES	
	Over load protection	YES	
	Over temperature protection	YES	
	Low voltage protection	YES	
Mechanical	Weight	≤ 580g	
	Size	100*80*36mm	
Other	Shell material	Die-cast aluminum	
	Packaging	White box	

## 24V to 13.8V 50A 60A DC-DC Buck Converter

### Design Features

- \* Design meeting by CE/RoHS
- \* Mount in almost any location
- \* Compact and light weight
- \* 100% full load burn-in test
- \* Short circuit protection
- \* Over temperature protection
- \* Advanced switch mode design
- \* Non-isolated between input & output
- \* Waterproof, Dust-proof, Shockproof
- \* Low voltage protection
- \* Over load protection
- \* 1 year limited warranty

### Applications

- \* Industrial
- \* Electromotor
- \* Logging Vehicles
- \* Alternative Energy
- \* Telecommunications
- \* LED market etc.
- \* Boat & Yacht
- \* Golf Cart & Forklift



Model No.		WG-24S13R850	WG-24S13R860
Input	Rated voltage	24V	
	Voltage range	18-36V	
	Efficiency	96%	96%
	Positive type	Terminal	
	Negative type	Terminal	
	Ignition wire (enable pin)	Optional	
Output	Voltage	13.8V	
	Current	0 ~ 50A	0 ~ 60A
	Max. rated power	690W	828W
	Voltage regulation	≤1%	
	Load regulation	≤2%	
	No load loss	70mA	70mA
	Ripple & noise	180mVp-p	180mVp-p
	Positive type	Terminal	
Negative type	Terminal		
Environment	Working temperature	-40°C ~ +80°C	
	Working humidity	10% ~ 90% RH	
	Storage temperature	-40°C ~ +85°C	
Function	Waterproof	IP67	
	Short circuit protection	YES	
	Over load protection	YES	
	Over temperature protection	YES	
	Low voltage protection	YES	
Mechanical	Weight	≤ 1.55kg	
	Size	150*127*63mm	
Other	Shell material	Aluminum	
	Packaging	Brown box	



## 24V to 13.8V 100A DC-DC Buck Converter

### Design Features

- \* Design meeting by CE/RoHS
- \* Mount in almost any location
- \* Compact and light weight
- \* 100% full load burn-in test
- \* Short circuit protection
- \* Over temperature protection
- \* Advanced switch mode design
- \* Non-isolated between input & output
- \* Waterproof, Dust-proof, Shockproof
- \* Low voltage protection
- \* Over load protection
- \* 2 years limited warranty

### Applications

- \* Industrial
- \* Electromotor
- \* Logging Vehicles
- \* Alternative Energy
- \* Telecommunications
- \* LED market etc.
- \* Boat & Yacht
- \* Golf Cart & Forklift



Model No.		WG-24S13R8100M
Input	Rated voltage	24V
	Voltage range	18-36V
	Efficiency	96.8%
	Positive type	Terminal
	Negative type	Terminal
	Ignition wire (enable pin)	Optional
Output	Voltage	13.8V
	Current	0 ~ 100A
	Max. rated power	1380W
	Voltage regulation	≤1%
	Load regulation	≤2%
	No load loss	72mA
	Ripple & noise	72-300mVp-p
	Positive type	Terminal
Negative type	Terminal	
Environment	Working temperature	-40°C ~ +80°C
	Working humidity	10% ~ 90% RH
	Storage temperature	-40°C ~ +85°C
Function	Waterproof	IP67
	Short circuit protection	YES
	Over load protection	YES
	Over temperature protection	YES
	Low voltage protection	YES
Mechanical	Weight	≤ 1.2kg
	Size	140*120*42.5mm
Other	Shell material	Die-cast aluminum
	Packaging	White box

## 24V to 13.8V 80A 100A DC-DC Buck Converter

### Design Features

- \* Design meeting by CE/RoHS
- \* Mount in almost any location
- \* Compact and light weight
- \* 100% full load burn-in test
- \* Short circuit protection
- \* Over temperature protection
- \* Advanced switch mode design
- \* Non-isolated between input & output
- \* Waterproof, Dust-proof, Shockproof
- \* Low voltage protection
- \* Over load protection
- \* 1 year limited warranty

### Applications

- \* Industrial
- \* Electromotor
- \* Logging Vehicles
- \* Alternative Energy
- \* Telecommunications
- \* LED market etc.
- \* Boat & Yacht
- \* Golf Cart & Forklift



Model No.		WG-24S13R880	WG-24S13R8100
Input	Rated voltage	24V	
	Voltage range	18-36V	
	Efficiency	95%	95%
	Positive type	Terminal	
	Negative type	Terminal	
	Ignition wire (enable pin)	Optional	
Output	Voltage	13.8V	
	Current	0 ~ 80A	0 ~ 100A
	Max. rated power	1104W	1380W
	Voltage regulation	≤1%	
	Load regulation	≤2%	
	No load loss	70mA	70mA
	Ripple & noise	230mVp-p	230mVp-p
	Positive type	Terminal	
Negative type	Terminal		
Environment	Working temperature	-40°C ~ +80°C	
	Working humidity	10% ~ 90% RH	
	Storage temperature	-40°C ~ +85°C	
Function	Waterproof	IP67	
	Short circuit protection	YES	
	Over load protection	YES	
	Over temperature protection	YES	
	Low voltage protection	YES	
Mechanical	Weight	≤ 2.3kg	
	Size	220*127*63mm	
Other	Shell material	Aluminum	
	Packaging	Brown box	

### 36V/48V to 12V 5A 10A DC-DC Buck Converter

#### Design Features

- \* Design meeting by CE/RoHS
- \* Mount in almost any location
- \* Compact and light weight
- \* 100% full load burn-in test
- \* Short circuit protection
- \* Over temperature protection
- \* Advanced switch mode design
- \* Non-isolated between input & output
- \* Waterproof, Dust-proof, Shockproof
- \* Low voltage protection
- \* Over load protection
- \* 1 year limited warranty

#### Applications

- \* Industrial
- \* Electromotor
- \* Logging Vehicles
- \* Alternative Energy
- \* Telecommunications
- \* LED market etc.
- \* Boat & Yacht
- \* Golf Cart & Forklift



Model No.		WG-48S1205	WG-48S1210Z
Input	Rated voltage	36V/48V	
	Voltage range	30-60V	
	Efficiency	94%	
	Positive cable length (red)	16-17cm	
	Negative cable length (black)	16-17cm	
Output	Voltage	12V	
	Current	0 ~ 5A	0 ~ 10A
	Max. rated power	60W	120W
	Voltage regulation	≤1%	
	Load regulation	≤2%	
	No load loss	20mA	
	Ripple & noise	120mVp-p	
	Positive cable length (yellow)	16-17cm	
	Negative cable length (black)	16-17cm	
Environment	Working temperature	-40°C ~ +80°C	
	Working humidity	10% ~ 90% RH	
	Storage temperature	-40°C ~ +85°C	
Function	Waterproof	IP67	
	Short circuit protection	YES	
	Over load protection	YES	
	Over temperature protection	YES	
	Low voltage protection	YES	
Mechanical	Weight	≤ 120g	
	Size	64*57*22mm	
Other	Shell material	Die-cast aluminum	
	Packaging	White box	

### 36V/48V to 12V 10A 20A DC-DC Buck Converter

#### Design Features

- \* Design meeting by CE/RoHS
- \* Mount in almost any location
- \* Compact and light weight
- \* 100% full load burn-in test
- \* Short circuit protection
- \* Over temperature protection
- \* Advanced switch mode design
- \* Non-isolated between input & output
- \* Waterproof, Dust-proof, Shockproof
- \* Low voltage protection
- \* Over load protection
- \* 1 year limited warranty

#### Applications

- \* Industrial
- \* Electromotor
- \* Logging Vehicles
- \* Alternative Energy
- \* Telecommunications
- \* LED market etc.
- \* Boat & Yacht
- \* Golf Cart & Forklift



Model No.		WG-48S1210	WG-48S1215	WG-48S1220
Input	Rated voltage	36V/48V		
	Voltage range	30-60V		
	Efficiency	94%	95.5%	94.9%
	Positive cable length (red)	16-17cm		
	Negative cable length (black)	16-17cm		
Output	Voltage	12V		
	Current	0 ~ 10A	0 ~ 15A	0 ~ 20A
	Max. rated power	120W	180W	240W
	Voltage regulation	≤1%		
	Load regulation	≤2%		
	No load loss	20mA	45mA	45mA
	Ripple & noise	120mVp-p	50mVp-p	50mVp-p
	Positive cable length (yellow)	16-17cm		
	Negative cable length (black)	16-17cm		
Environment	Working temperature	-40°C ~ +80°C		
	Working humidity	10% ~ 90% RH		
	Storage temperature	-40°C ~ +85°C		
Function	Waterproof	IP67		
	Short circuit protection	YES		
	Over load protection	YES		
	Over temperature protection	YES		
	Low voltage protection	YES		
Mechanical	Weight	≤ 300g		
	Size	74*74*32mm		
Other	Shell material	Die-cast aluminum		
	Packaging	White box		

### 36V/48V to 12V 20A DC-DC Buck Converter

#### Design Features

- \* Design meeting by CE/RoHS
- \* Mount in almost any location
- \* Compact and light weight
- \* 100% full load burn-in test
- \* Short circuit protection
- \* Over temperature protection
- \* Advanced switch mode design
- \* Non-isolated between input & output
- \* Waterproof, Dust-proof, Shockproof
- \* Low voltage protection
- \* Over load protection
- \* 1 year limited warranty

#### Applications

- \* Industrial
- \* Electromotor
- \* Logging Vehicles
- \* Alternative Energy
- \* Telecommunications
- \* LED market etc.
- \* Boat & Yacht
- \* Golf Cart & Forklift



Model No.	WG-48S1220M	
Input	Rated voltage	36V/48V
	Voltage range	30-60V
	Efficiency	94.9%
	Positive type	Terminal
	Negative type	Terminal
	Ignition wire (enable pin)	Optional
Output	Voltage	12V
	Current	0 ~ 20A
	Max. rated power	240W
	Voltage regulation	≤1%
	Load regulation	≤2%
	No load loss	45mA
	Ripple & noise	50mVp-p
	Positive type	Terminal
Environment	Negative type	Terminal
	Working temperature	-40°C ~ +80°C
	Working humidity	10% ~ 90% RH
Function	Storage temperature	-40°C ~ +85°C
	Waterproof	IP67
	Short circuit protection	YES
	Over load protection	YES
	Over temperature protection	YES
Mechanical	Low voltage protection	YES
	Weight	≤ 290g
Other	Size	74*74*29.5mm
	Shell material	Die-cast aluminum
	Packaging	White box





## 36V/48V to 12V 10A 20A DC-DC Buck Converter

### Design Features

- \* Design meeting by CE/RoHS
- \* Mount in almost any location
- \* Compact and light weight
- \* 100% full load burn-in test
- \* Short circuit protection
- \* Over temperature protection
- \* Advanced switch mode design
- \* Non-isolated between input & output
- \* Waterproof, Dust-proof, Shockproof
- \* Low voltage protection
- \* Over load protection
- \* 2 years limited warranty

### Applications

- \* Industrial
- \* Electromotor
- \* Logging Vehicles
- \* Alternative Energy
- \* Telecommunications
- \* LED market etc.
- \* Boat & Yacht
- \* Golf Cart & Forklift

Model No.		WG-48S1210L	WG-48S1220L
Input	Rated voltage	36V/48V	
	Voltage range	30-60V	
	Efficiency	94.5%	94%
	Positive type	Terminal	
	Negative type	Terminal	
	Ignition wire (enable pin)	Optional	
Output	Voltage	12V	
	Current	0 ~ 10A	0 ~ 20A
	Max. rated power	120W	240W
	Voltage regulation	≤1%	
	Load regulation	≤2%	
	No load loss	37mA	47mA
	Ripple & noise	45mVp-p	80mVp-p
	Positive type	Terminal	
Negative type	Terminal		
Environment	Working temperature	-40°C ~ +80°C	
	Working humidity	10% ~ 90% RH	
	Storage temperature	-40°C ~ +85°C	
Function	Waterproof	IP65	
	Short circuit protection	YES	
	Over load protection	YES	
	Over temperature protection	YES	
	Reversing polarity protection	YES	
	Low voltage protection	YES	
Mechanical	Weight	≤ 260g	
	Size	110*70*23mm	
Other	Shell material	Die-cast aluminum	
	Packaging	Color box	

### 36V/48V to 12V 30A 40A DC-DC Buck Converter

#### Design Features

- \* Design meeting by CE/RoHS
- \* Mount in almost any location
- \* Compact and light weight
- \* 100% full load burn-in test
- \* Short circuit protection
- \* Over temperature protection
- \* Advanced switch mode design
- \* Non-isolated between input & output
- \* Waterproof, Dust-proof, Shockproof
- \* Low voltage protection
- \* Over load protection
- \* 1 year limited warranty

#### Applications

- \* Industrial
- \* Electromotor
- \* Logging Vehicles
- \* Alternative Energy
- \* Telecommunications
- \* LED market etc.
- \* Boat & Yacht
- \* Golf Cart & Forklift



Model No.		WG-48S1230	WG-48S1240
Input	Rated voltage	36V/48V	
	Voltage range	30-60V	
	Efficiency	94.8%	96.2%
	Positive cable length (red)	16-17cm	
	Negative cable length (black)	16-17cm	
Output	Voltage	12V	
	Current	0 ~ 30A	0 ~ 40A
	Max. rated power	360W	480W
	Voltage regulation	≤1%	
	Load regulation	≤2%	
	No load loss	61mA	71mA
	Ripple & noise	50-200mVp-p	36-200mVp-p
	Positive cable length (white)	16-17cm	
	Negative cable length (black)	16-17cm	
Environment	Working temperature	-40°C ~ +80°C	
	Working humidity	10% ~ 90% RH	
	Storage temperature	-40°C ~ +85°C	
Function	Waterproof	IP67	
	Short circuit protection	YES	
	Over load protection	YES	
	Over temperature protection	YES	
	Low voltage protection	YES	
Mechanical	Weight	≤ 550g	
	Size	100*80*39mm	
Other	Shell material	Die-cast aluminum	
	Packaging	White box	

## 36V/48V to 12V 50A 60A DC-DC Buck Converter

### Design Features

- \* Design meeting by CE/RoHS
- \* Mount in almost any location
- \* Compact and light weight
- \* 100% full load burn-in test
- \* Short circuit protection
- \* Over temperature protection
- \* Advanced switch mode design
- \* Non-isolated between input & output
- \* Waterproof, Dust-proof, Shockproof
- \* Low voltage protection
- \* Over load protection
- \* 2 years limited warranty

### Applications

- \* Industrial
- \* Electromotor
- \* Logging Vehicles
- \* Alternative Energy
- \* Telecommunications
- \* LED market etc.
- \* Boat & Yacht
- \* Golf Cart & Forklift



Model No.		WG-48S1250M	WG-48S1260M
Input	Rated voltage	36V/48V	
	Voltage range	30-60V	
	Efficiency	96%	96%
	Positive type	Terminal	
	Negative type	Terminal	
	Ignition wire (enable pin)	Optional	
Output	Voltage	12V	
	Current	0 ~ 50A	0 ~ 60A
	Max. rated power	600W	720W
	Voltage regulation	≤1%	
	Load regulation	≤2%	
	No load loss	88mA	88mA
	Ripple & noise	62-200mVp-p	62-200mVp-p
	Positive type	Terminal	
Negative type	Terminal		
Environment	Working temperature	-40°C ~ +80°C	
	Working humidity	10% ~ 90% RH	
	Storage temperature	-40°C ~ +85°C	
Function	Waterproof	IP67	
	Short circuit protection	YES	
	Over load protection	YES	
	Over temperature protection	YES	
	Low voltage protection	YES	
Mechanical	Weight	≤ 580g	
	Size	100*80*36mm	
Other	Shell material	Die-cast aluminum	
	Packaging	White box	

## 36V/48V to 12V 50A 60A DC-DC Buck Converter

### Design Features

- \* Design meeting by CE/RoHS
- \* Mount in almost any location
- \* Compact and light weight
- \* 100% full load burn-in test
- \* Short circuit protection
- \* Over temperature protection
- \* Advanced switch mode design
- \* Non-isolated between input & output
- \* Waterproof, Dust-proof, Shockproof
- \* Low voltage protection
- \* Over load protection
- \* 1 year limited warranty

### Applications

- \* Industrial
- \* Electromotor
- \* Logging Vehicles
- \* Alternative Energy
- \* Telecommunications
- \* LED market etc.
- \* Boat & Yacht
- \* Golf Cart & Forklift



Model No.		WG-48S1250	WG-48S1260
Input	Rated voltage	36V/48V	
	Voltage range	32-60V	
	Efficiency	95%	
	Positive type	Terminal	
	Negative type	Terminal	
	Ignition wire (enable pin)	Optional	
Output	Voltage	12V	
	Current	0 ~ 50A	0 ~ 60A
	Max. rated power	600W	720W
	Voltage regulation	≤1%	
	Load regulation	≤2%	
	No load loss	70mA	
	Ripple & noise	100-150mVp-p	
	Positive type	Terminal	
Negative type	Terminal		
Environment	Working temperature	-40°C ~ +80°C	
	Working humidity	10% ~ 90% RH	
	Storage temperature	-40°C ~ +85°C	
Function	Waterproof	IP67	
	Short circuit protection	YES	
	Over load protection	YES	
	Over temperature protection	YES	
	Low voltage protection	YES	
Mechanical	Weight	≤ 1.55kg	
	Size	150*127*63mm	
Other	Shell material	Aluminum	
	Packaging	Brown box	



### 36V/48V to 12V 80A 100A DC-DC Buck Converter

#### Design Features

- \* Design meeting by CE/RoHS
- \* Mount in almost any location
- \* Compact and light weight
- \* 100% full load burn-in test
- \* Short circuit protection
- \* Over temperature protection
- \* Advanced switch mode design
- \* Non-isolated between input & output
- \* Waterproof, Dust-proof, Shockproof
- \* Low voltage protection
- \* Over load protection
- \* 2 years limited warranty

#### Applications

- \* Industrial
- \* Electromotor
- \* Logging Vehicles
- \* Alternative Energy
- \* Telecommunications
- \* LED market etc.
- \* Boat & Yacht
- \* Golf Cart & Forklift

Model No.		WG-48S1280	WG-48S12100
Input	Rated voltage	36V/48V	
	Voltage range	30-60V	
	Efficiency	97.5%	96.9%
	Positive type	Terminal	
	Negative type	Terminal	
	Ignition wire (enable pin)	Optional	
Output	Voltage	12V	
	Current	0 ~ 80A	0 ~ 100A
	Max. rated power	960W	1200W
	Voltage regulation	≤1%	
	Load regulation	≤2%	
	No load loss	88mA	88mA
	Ripple & noise	51-200mVp-p	51-200mVp-p
	Positive type	Terminal	
Negative type	Terminal		
Environment	Working temperature	-40°C ~ +80°C	
	Working humidity	10% ~ 90% RH	
	Storage temperature	-40°C ~ +85°C	
Function	Waterproof	IP67	
	Short circuit protection	YES	
	Over load protection	YES	
	Over temperature protection	YES	
	Low voltage protection	YES	
Mechanical	Weight	≤ 1.2kg	
	Size	140*120*42.5mm	
Other	Shell material	Die-cast aluminum	
	Packaging	White box	



## 36V/48V to 13.8V 5A DC-DC Buck Converter

### Design Features

- \* Design meeting by CE/RoHS
- \* Mount in almost any location
- \* Compact and light weight
- \* 100% full load burn-in test
- \* Short circuit protection
- \* Over temperature protection
- \* Advanced switch mode design
- \* Non-isolated between input & output
- \* Waterproof, Dust-proof, Shockproof
- \* Low voltage protection
- \* Over load protection
- \* 1 year limited warranty

### Applications

- \* Industrial
- \* Electromotor
- \* Logging Vehicles
- \* Alternative Energy
- \* Telecommunications
- \* LED market etc.
- \* Boat & Yacht
- \* Golf Cart & Forklift



Model No.		WG-48S13R805
Input	Rated voltage	36V/48V
	Voltage range	30-60V
	Efficiency	94%
	Positive cable length (red)	16-17cm
	Negative cable length (black)	16-17cm
Output	Voltage	13.8V
	Current	0 ~ 5A
	Max. rated power	69W
	Voltage regulation	≤1%
	Load regulation	≤2%
	No load loss	20mA
	Ripple & noise	120mVp-p
	Positive cable length (yellow)	16-17cm
	Negative cable length (black)	16-17cm
Environment	Working temperature	-40°C ~ +80°C
	Working humidity	10% ~ 90% RH
	Storage temperature	-40°C ~ +85°C
Function	Waterproof	IP67
	Short circuit protection	YES
	Over load protection	YES
	Over temperature protection	YES
	Low voltage protection	YES
Mechanical	Weight	≤ 120g
	Size	64*57*22mm
Other	Shell material	Die-cast aluminum
	Packaging	White box

### 36V/48V to 13.8V 10A 20A DC-DC Buck Converter

#### Design Features

- \* Design meeting by CE/RoHS
- \* Mount in almost any location
- \* Compact and light weight
- \* 100% full load burn-in test
- \* Short circuit protection
- \* Over temperature protection
- \* Advanced switch mode design
- \* Non-isolated between input & output
- \* Waterproof, Dust-proof, Shockproof
- \* Low voltage protection
- \* Over load protection
- \* 1 year limited warranty

#### Applications

- \* Industrial
- \* Electromotor
- \* Logging Vehicles
- \* Alternative Energy
- \* Telecommunications
- \* LED market etc.
- \* Boat & Yacht
- \* Golf Cart & Forklift



Model No.		WG-48S13R810	WG-48S13R815	WG-48S13R820
Input	Rated voltage	36V/48V		
	Voltage range	30-60V		
	Efficiency	94%	95.5%	94.9%
	Positive cable length (red)	16-17cm		
	Negative cable length (black)	16-17cm		
Output	Voltage	13.8V		
	Current	0 ~ 10A	0 ~ 15A	0 ~ 20A
	Max. rated power	138W	207W	276W
	Voltage regulation	≤1%		
	Load regulation	≤2%		
	No load loss	20mA	45mA	45mA
	Ripple & noise	120mVp-p	50mVp-p	50mVp-p
	Positive cable length (yellow)	16-17cm		
Negative cable length (black)	16-17cm			
Environment	Working temperature	-40°C ~ +80°C		
	Working humidity	10% ~ 90% RH		
	Storage temperature	-40°C ~ +85°C		
Function	Waterproof	IP67		
	Short circuit protection	YES		
	Over load protection	YES		
	Over temperature protection	YES		
	Low voltage protection	YES		
Mechanical	Weight	≤ 300g		
	Size	74*74*32mm		
Other	Shell material	Die-cast aluminum		
	Packaging	White box		

### 36V/48V to 13.8V 30A 40A DC-DC Buck Converter

#### Design Features

- \* Design meeting by CE/RoHS
- \* Mount in almost any location
- \* Compact and light weight
- \* 100% full load burn-in test
- \* Short circuit protection
- \* Over temperature protection
- \* Advanced switch mode design
- \* Non-isolated between input & output
- \* Waterproof, Dust-proof, Shockproof
- \* Low voltage protection
- \* Over load protection
- \* 1 year limited warranty

#### Applications

- \* Industrial
- \* Electromotor
- \* Logging Vehicles
- \* Alternative Energy
- \* Telecommunications
- \* LED market etc.
- \* Boat & Yacht
- \* Golf Cart & Forklift



Model No.		WG-48S13R830	WG-48S13R840
Input	Rated voltage	36V/48V	
	Voltage range	30-60V	
	Efficiency	94%	96%
	Positive cable length (red)	16-17cm	
	Negative cable length (black)	16-17cm	
Output	Voltage	13.8V	
	Current	0 ~ 30A	0 ~ 40A
	Max. rated power	414W	552W
	Voltage regulation	≤1%	
	Load regulation	≤2%	
	No load loss	61mA	71mA
	Ripple & noise	50-200mVp-p	36-200mVp-p
	Positive cable length (white)	16-17cm	
	Negative cable length (black)	16-17cm	
Environment	Working temperature	-40°C ~ +80°C	
	Working humidity	10% ~ 90% RH	
	Storage temperature	-40°C ~ +85°C	
Function	Waterproof	IP67	
	Short circuit protection	YES	
	Over load protection	YES	
	Over temperature protection	YES	
	Low voltage protection	YES	
Mechanical	Weight	≤ 550g	
	Size	100*80*39mm	
Other	Shell material	Die-cast aluminum	
	Packaging	White box	

### 36V/48V to 13.8V 50A 60A DC-DC Buck Converter

#### Design Features

- \* Design meeting by CE/RoHS
- \* Mount in almost any location
- \* Compact and light weight
- \* 100% full load burn-in test
- \* Short circuit protection
- \* Over temperature protection
- \* Advanced switch mode design
- \* Non-isolated between input & output
- \* Waterproof, Dust-proof, Shockproof
- \* Low voltage protection
- \* Over load protection
- \* 2 years limited warranty

#### Applications

- \* Industrial
- \* Electromotor
- \* Logging Vehicles
- \* Alternative Energy
- \* Telecommunications
- \* LED market etc.
- \* Boat & Yacht
- \* Golf Cart & Forklift



Model No.		WG-48S13R850M	WG-48S13R860M
Input	Rated voltage	36V/48V	
	Voltage range	30-60V	
	Efficiency	95%	
	Positive type	Terminal	
	Negative type	Terminal	
	Ignition wire (enable pin)	Optional	
Output	Voltage	13.8V	
	Current	0 ~ 50A	0 ~ 60A
	Max. rated power	690W	828W
	Voltage regulation	≤1%	
	Load regulation	≤2%	
	No load loss	88mA	
	Ripple & noise	62-200mVp-p	
	Positive type	Terminal	
Negative type	Terminal		
Environment	Working temperature	-40°C ~ +80°C	
	Working humidity	10% ~ 90% RH	
	Storage temperature	-40°C ~ +85°C	
Function	Waterproof	IP67	
	Short circuit protection	YES	
	Over load protection	YES	
	Over temperature protection	YES	
	Low voltage protection	YES	
Mechanical	Weight	≤ 580g	
	Size	100*80*36mm	
Other	Shell material	Die-cast aluminum	
	Packaging	White box	



### 36V/48V to 13.8V 80A 100A DC-DC Buck Converter

#### Design Features

- \* Design meeting by CE/RoHS
- \* Mount in almost any location
- \* Compact and light weight
- \* 100% full load burn-in test
- \* Short circuit protection
- \* Over temperature protection
- \* Advanced switch mode design
- \* Non-isolated between input & output
- \* Waterproof, Dust-proof, Shockproof
- \* Low voltage protection
- \* Over load protection
- \* 2 years limited warranty

#### Applications

- \* Industrial
- \* Electromotor
- \* Logging Vehicles
- \* Alternative Energy
- \* Telecommunications
- \* LED market etc.
- \* Boat & Yacht
- \* Golf Cart & Forklift

Model No.		WG-48S13R880	WG-48S13R8100
Input	Rated voltage	36V/48V	
	Voltage range	30-60V	
	Efficiency	97.3%	96.8%
	Positive type	Terminal	
	Negative type	Terminal	
	Ignition wire (enable pin)	Optional	
Output	Voltage	13.8V	
	Current	0 ~ 80A	0 ~ 100A
	Max. rated power	1104W	1380W
	Voltage regulation	≤1%	
	Load regulation	≤2%	
	No load loss	88mA	88mA
	Ripple & noise	51-200mVp-p	51-200mVp-p
	Positive type	Terminal	
Negative type	Terminal		
Environment	Working temperature	-40°C ~ +80°C	
	Working humidity	10% ~ 90% RH	
	Storage temperature	-40°C ~ +85°C	
Function	Waterproof	IP67	
	Short circuit protection	YES	
	Over load protection	YES	
	Over temperature protection	YES	
	Low voltage protection	YES	
Mechanical	Weight	≤ 1.2kg	
	Size	140*120*42.5mm	
Other	Shell material	Die-cast aluminum	
	Packaging	White box	



### 36V/48V to 13.8V 50A 60A DC-DC Buck Converter

#### Design Features

- \* Design meeting by CE/RoHS
- \* Mount in almost any location
- \* Compact and light weight
- \* 100% full load burn-in test
- \* Short circuit protection
- \* Over temperature protection
- \* Advanced switch mode design
- \* Non-isolated between input & output
- \* Waterproof, Dust-proof, Shockproof
- \* Low voltage protection
- \* Over load protection
- \* 1 year limited warranty

#### Applications

- \* Industrial
- \* Electromotor
- \* Logging Vehicles
- \* Alternative Energy
- \* Telecommunications
- \* LED market etc.
- \* Boat & Yacht
- \* Golf Cart & Forklift



Model No.		WG-48S13R850	WG-48S13R860
Input	Rated voltage	36V/48V	
	Voltage range	32-60V	
	Efficiency	95%	
	Positive type	Terminal	
	Negative type	Terminal	
	Ignition wire (enable pin)	Optional	
Output	Voltage	13.8V	
	Current	0 ~ 50A	0 ~ 60A
	Max. rated power	690W	828W
	Voltage regulation	≤1%	
	Load regulation	≤2%	
	No load loss	70mA	
	Ripple & noise	100-150mVp-p	
	Positive type	Terminal	
Negative type	Terminal		
Environment	Working temperature	-40°C ~ +80°C	
	Working humidity	10% ~ 90% RH	
	Storage temperature	-40°C ~ +85°C	
Function	Waterproof	IP67	
	Short circuit protection	YES	
	Over load protection	YES	
	Over temperature protection	YES	
	Low voltage protection	YES	
Mechanical	Weight	≤ 1.55kg	
	Size	150*127*63mm	
Other	Shell material	Aluminum	
	Packaging	Brown box	

### 36V/48V to 24V 3A DC-DC Buck Converter

#### Design Features

- \* Design meeting by CE/RoHS
- \* Mount in almost any location
- \* Compact and light weight
- \* 100% full load burn-in test
- \* Short circuit protection
- \* Over temperature protection
- \* Advanced switch mode design
- \* Non-isolated between input & output
- \* Waterproof, Dust-proof, Shockproof
- \* Low voltage protection
- \* Over load protection
- \* 1 year limited warranty

#### Applications

- \* Industrial
- \* Electromotor
- \* Logging Vehicles
- \* Alternative Energy
- \* Telecommunications
- \* LED market etc.
- \* Boat & Yacht
- \* Golf Cart & Forklift



Model No.		WG-48S2403	WG-48S2410Z
Input	Rated voltage	36V/48V	
	Voltage range	30-60V	
	Efficiency	96%	
	Positive cable length (red)	16-17cm	
	Negative cable length (black)	16-17cm	
Output	Voltage	24V	
	Current	0 ~ 3A	0 ~ 10A
	Max. rated power	72W	240W
	Voltage regulation	≤1%	
	Load regulation	≤2%	
	No load loss	50mA	
	Ripple & noise	180mVp-p	
	Positive cable length (yellow)	16-17cm	
	Negative cable length (black)	16-17cm	
Environment	Working temperature	-40°C ~ +80°C	
	Working humidity	10% ~ 90% RH	
	Storage temperature	-40°C ~ +85°C	
Function	Waterproof	IP67	
	Short circuit protection	YES	
	Over load protection	YES	
	Over temperature protection	YES	
	Low voltage protection	YES	
Mechanical	Weight	≤ 120g	
	Size	64*57*22mm	
Other	Shell material	Die-cast aluminum	
	Packaging	White box	

## 36V/48V to 24V 5A 10A 20A DC-DC Buck Converter

### Design Features

- \* Design meeting by CE/RoHS
- \* Mount in almost any location
- \* Compact and light weight
- \* 100% full load burn-in test
- \* Short circuit protection
- \* Over temperature protection
- \* Advanced switch mode design
- \* Non-isolated between input & output
- \* Waterproof, Dust-proof, Shockproof
- \* Low voltage protection
- \* Over load protection
- \* 1 year limited warranty

### Applications

- \* Industrial
- \* Electromotor
- \* Logging Vehicles
- \* Alternative Energy
- \* Telecommunications
- \* LED market etc.
- \* Boat & Yacht
- \* Golf Cart & Forklift



Model No.		WG-48S2405	WG-48S2410	WG-48S2420Z
Input	Rated voltage	36V/48V		
	Voltage range	30-60V		
	Efficiency	96%	97.2%	94.9%
	Positive cable length (red)	16-17cm		
	Negative cable length (black)	16-17cm		
Output	Voltage	24V		
	Current	0 ~ 5A	0 ~ 10A	0 ~ 20A
	Max. rated power	120W	240W	480W
	Voltage regulation	≤1%		
	Load regulation	≤2%		
	No load loss	40mA	49mA	45mA
	Ripple & noise	50mVp-p	55mVp-p	50mVp-p
	Positive cable length (yellow)	16-17cm		
	Negative cable length (black)	16-17cm		
Environment	Working temperature	-40°C ~ +80°C		
	Working humidity	10% ~ 90% RH		
	Storage temperature	-40°C ~ +85°C		
Function	Waterproof	IP67		
	Short circuit protection	YES		
	Over load protection	YES		
	Over temperature protection	YES		
	Low voltage protection	YES		
Mechanical	Weight	≤ 300g		
	Size	74*74*32mm		
Other	Shell material	Die-cast aluminum		
	Packaging	White box		

## 36V/48V to 24V 20A DC-DC Buck Converter

### Design Features

- \* Design meeting by CE/RoHS
- \* Mount in almost any location
- \* Compact and light weight
- \* 100% full load burn-in test
- \* Short circuit protection
- \* Over temperature protection
- \* Advanced switch mode design
- \* Non-isolated between input & output
- \* Waterproof, Dust-proof, Shockproof
- \* Low voltage protection
- \* Over load protection
- \* 1 year limited warranty

### Applications

- \* Industrial
- \* Electromotor
- \* Logging Vehicles
- \* Alternative Energy
- \* Telecommunications
- \* LED market etc.
- \* Boat & Yacht
- \* Golf Cart & Forklift



Model No.	WG-48S2420M	
Input	Rated voltage	36V/48V
	Voltage range	30-60V
	Efficiency	94.9%
	Positive type	Terminal
	Negative type	Terminal
	Ignition wire (enable pin)	Optional
Output	Voltage	24V
	Current	0 ~ 20A
	Max. rated power	480W
	Voltage regulation	≤1%
	Load regulation	≤2%
	No load loss	45mA
	Ripple & noise	50mVp-p
	Positive type	Terminal
Environment	Negative type	Terminal
	Working temperature	-40°C ~ +80°C
	Working humidity	10% ~ 90% RH
Function	Storage temperature	-40°C ~ +85°C
	Waterproof	IP67
	Short circuit protection	YES
	Over load protection	YES
	Over temperature protection	YES
Mechanical	Low voltage protection	YES
	Weight	≤ 290g
Other	Size	74*74*29.5mm
	Shell material	Die-cast aluminum
	Packaging	White box



## 36V/48V to 24V 10A 20A DC-DC Buck Converter

### Design Features

- \* Design meeting by CE/RoHS
- \* Mount in almost any location
- \* Compact and light weight
- \* 100% full load burn-in test
- \* Short circuit protection
- \* Over temperature protection
- \* Advanced switch mode design
- \* Non-isolated between input & output
- \* Waterproof, Dust-proof, Shockproof
- \* Low voltage protection
- \* Over load protection
- \* 2 years limited warranty

### Applications

- \* Industrial
- \* Electromotor
- \* Logging Vehicles
- \* Alternative Energy
- \* Telecommunications
- \* LED market etc.
- \* Boat & Yacht
- \* Golf Cart & Forklift

Model No.	WG-48S2410L	WG-48S2420L	
Input	Rated voltage	36V/48V	
	Voltage range	30-60V	
	Efficiency	96%	96%
	Positive type	Terminal	
	Negative type	Terminal	
	Ignition wire (enable pin)	Optional	
Output	Voltage	24V	
	Current	0 ~ 10A	0 ~ 20A
	Max. rated power	240W	480W
	Voltage regulation	≤1%	
	Load regulation	≤2%	
	No load loss	37mA	37mA
	Ripple & noise	120-180mVp-p	150-220mVp-p
	Positive type	Terminal	
Negative type	Terminal		
Environment	Working temperature	-40°C ~ +80°C	
	Working humidity	10% ~ 90% RH	
	Storage temperature	-40°C ~ +85°C	
Function	Waterproof	IP65	
	Short circuit protection	YES	
	Over load protection	YES	
	Over temperature protection	YES	
	Reversing polarity protection	YES	
	Low voltage protection	YES	
Mechanical	Weight	≤ 260g	
	Size	110*70*23mm	
Other	Shell material	Die-cast aluminum	
	Packaging	Color box	



### 36V/48V to 24V 30A DC-DC Buck Converter

#### Design Features

- \* Design meeting by CE/RoHS
- \* Mount in almost any location
- \* Compact and light weight
- \* 100% full load burn-in test
- \* Short circuit protection
- \* Over temperature protection
- \* Advanced switch mode design
- \* Non-isolated between input & output
- \* Waterproof, Dust-proof, Shockproof
- \* Low voltage protection
- \* Over load protection
- \* 1 year limited warranty

#### Applications

- \* Industrial
- \* Electromotor
- \* Logging Vehicles
- \* Alternative Energy
- \* Telecommunications
- \* LED market etc.
- \* Boat & Yacht
- \* Golf Cart & Forklift



Model No.		WG-48S2430
Input	Rated voltage	36V/48V
	Voltage range	32-60V
	Efficiency	95%
	Positive cable length (red)	16-17cm
	Negative cable length (black)	16-17cm
Output	Voltage	24V
	Current	0 ~ 30A
	Max. rated power	720W
	Voltage regulation	≤1%
	Load regulation	≤2%
	No load loss	70mA
	Ripple & noise	240mVp-p
	Positive cable length (white)	16-17cm
	Negative cable length (black)	16-17cm
Environment	Working temperature	-40°C ~ +80°C
	Working humidity	10% ~ 90% RH
	Storage temperature	-40°C ~ +85°C
Function	Waterproof	IP67
	Short circuit protection	YES
	Over load protection	YES
	Over temperature protection	YES
	Low voltage protection	YES
Mechanical	Weight	≤ 550g
	Size	100*80*39mm
Other	Shell material	Die-cast aluminum
	Packaging	White box

## 36V/48V to 24V 40A 60A DC-DC Buck Converter

### Design Features

- \* Design meeting by CE/RoHS
- \* Mount in almost any location
- \* Compact and light weight
- \* 100% full load burn-in test
- \* Short circuit protection
- \* Over temperature protection
- \* Advanced switch mode design
- \* Non-isolated between input & output
- \* Waterproof, Dust-proof, Shockproof
- \* Low voltage protection
- \* Over load protection
- \* 2 years limited warranty

### Applications

- \* Industrial
- \* Electromotor
- \* Logging Vehicles
- \* Alternative Energy
- \* Telecommunications
- \* LED market etc.
- \* Boat & Yacht
- \* Golf Cart & Forklift



Model No.		WG-48S2440M	WG-48S2460M
Input	Rated voltage	36V/48V	
	Voltage range	30-60V	
	Efficiency	98.1%	98.1%
	Positive type	Terminal	
	Negative type	Terminal	
	Ignition wire (enable pin)	Optional	
Output	Voltage	24V	
	Current	0 ~ 40A	0 ~ 60A
	Max. rated power	960W	1440W
	Voltage regulation	≤1%	
	Load regulation	≤2%	
	No load loss	41mA	82mA
	Ripple & noise	56-200mVp-p	84-300mVp-p
	Positive type	Terminal	
Negative type	Terminal		
Environment	Working temperature	-40°C ~ +80°C	
	Working humidity	10% ~ 90% RH	
	Storage temperature	-40°C ~ +85°C	
Function	Waterproof	IP67	
	Short circuit protection	YES	
	Over load protection	YES	
	Over temperature protection	YES	
	Low voltage protection	YES	
Mechanical	Weight	≤ 580g	
	Size	100*80*36mm	
Other	Shell material	Die-cast aluminum	
	Packaging	White box	

## 36V/48V to 24V 85A DC-DC Buck Converter

### Design Features

- \* Design meeting by CE/RoHS
- \* Mount in almost any location
- \* Compact and light weight
- \* 100% full load burn-in test
- \* Short circuit protection
- \* Over temperature protection
- \* Advanced switch mode design
- \* Non-isolated between input & output
- \* Waterproof, Dust-proof, Shockproof
- \* Low voltage protection
- \* Over load protection
- \* 2 years limited warranty

### Applications

- \* Industrial
- \* Electromotor
- \* Logging Vehicles
- \* Alternative Energy
- \* Telecommunications
- \* LED market etc.
- \* Boat & Yacht
- \* Golf Cart & Forklift



Model No.		WG-48S2485
Input	Rated voltage	36V/48V
	Voltage range	30-60V
	Efficiency	97.8%
	Positive type	Terminal
	Negative type	Terminal
	Ignition wire (enable pin)	Optional
Output	Voltage	24V
	Current	0 ~ 85A
	Max. rated power	2040W
	Voltage regulation	≤1%
	Load regulation	≤2%
	No load loss	88mA
	Ripple & noise	137-200mVp-p
	Positive type	Terminal
Negative type	Terminal	
Environment	Working temperature	-40°C ~ +80°C
	Working humidity	10% ~ 90% RH
	Storage temperature	-40°C ~ +85°C
Function	Waterproof	IP67
	Short circuit protection	YES
	Over load protection	YES
	Over temperature protection	YES
	Low voltage protection	YES
Mechanical	Weight	≤ 1.2kg
	Size	140*120*42.5mm
Other	Shell material	Die-cast aluminum
	Packaging	White box

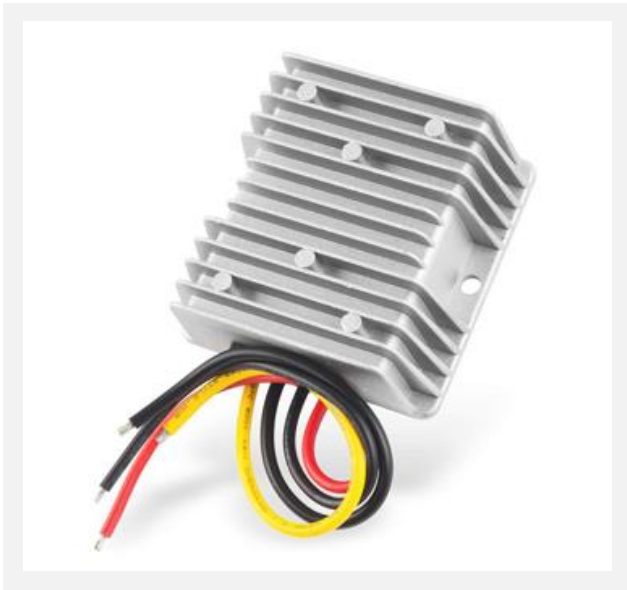
## 60V to 12V 5A 10A 20A DC-DC Buck Converter

### Design Features

- \* Design meeting by CE/RoHS
- \* Mount in almost any location
- \* Compact and light weight
- \* 100% full load burn-in test
- \* Short circuit protection
- \* Over temperature protection
- \* Advanced switch mode design
- \* Non-isolated between input & output
- \* Waterproof, Dust-proof, Shockproof
- \* Low voltage protection
- \* Over load protection
- \* 1 year limited warranty

### Applications

- \* Industrial
- \* Electromotor
- \* Logging Vehicles
- \* Alternative Energy
- \* Telecommunications
- \* LED market etc.
- \* Boat & Yacht
- \* Golf Cart & Forklift



Model No.		WG-60S1205	WG-60S1210	WG-60S1220
Input	Rated voltage	36V/48V/60V		
	Voltage range	30-75V		
	Efficiency	95.8%	96.2%	95.4%
	Positive cable length (red)	16-17cm		
	Negative cable length (black)	16-17cm		
	Ignition wire (enable pin)	Optional		
Output	Voltage	12V		
	Current	0 ~ 5A	0 ~ 10A	0 ~ 20A
	Max. rated power	60W	120W	240W
	Voltage regulation	≤1%		
	Load regulation	≤2%		
	No load loss	30mA		
	Ripple & noise	100mVp-p		
	Positive cable length (yellow)	16-17cm		
Negative cable length (black)	16-17cm			
Environment	Working temperature	-40°C ~ +80°C		
	Working humidity	10% ~ 90% RH		
	Storage temperature	-40°C ~ +85°C		
Function	Waterproof	IP67		
	Short circuit protection	YES		
	Over load protection	YES		
	Over temperature protection	YES		
	Low voltage protection	YES		
Mechanical	Weight	≤ 300g		
	Size	74*74*32mm		
Other	Shell material	Die-cast aluminum		
	Packaging	White box		

## 72V to 12V 5A 10A DC-DC Buck Converter

### Design Features

- \* Design meeting by CE/RoHS
- \* Mount in almost any location
- \* Compact and light weight
- \* 100% full load burn-in test
- \* Short circuit protection
- \* Over temperature protection
- \* Advanced switch mode design
- \* Non-isolated between input & output
- \* Waterproof, Dust-proof, Shockproof
- \* Low voltage protection
- \* Over load protection
- \* 1 year limited warranty

### Applications

- \* Industrial
- \* Electromotor
- \* Logging Vehicles
- \* Alternative Energy
- \* Telecommunications
- \* LED market etc.
- \* Boat & Yacht
- \* Golf Cart & Forklift



Model No.		WG-72S1205	WG-72S1210Z
Input	Rated voltage	24V/36V/48V/60V/72V	
	Voltage range	18-90V	
	Efficiency	90.6%	91%
	Positive cable length (red)	16-17cm	
	Negative cable length (black)	16-17cm	
Output	Voltage	12V	
	Current	0 ~ 5A	0 ~ 10A
	Max. rated power	60W	120W
	Voltage regulation	≤1%	
	Load regulation	≤2%	
	No load loss	35mA	32mA
	Ripple & noise	96-200mVp-p	84-200mVp-p
	Positive cable length (yellow)	16-17cm	
Negative cable length (black)	16-17cm		
Environment	Working temperature	-40°C ~ +80°C	
	Working humidity	10% ~ 90% RH	
	Storage temperature	-40°C ~ +85°C	
Function	Waterproof	IP67	
	Short circuit protection	YES	
	Over load protection	YES	
	Over temperature protection	YES	
	Low voltage protection	YES	
Mechanical	Weight	≤ 120g	
	Size	64*57*22mm	
Other	Shell material	Die-cast aluminum	
	Packaging	White box	



## 72V to 12V 10A 20A DC-DC Buck Converter

### Design Features

- \* Design meeting by CE/RoHS
- \* Mount in almost any location
- \* Compact and light weight
- \* 100% full load burn-in test
- \* Short circuit protection
- \* Over temperature protection
- \* Advanced switch mode design
- \* Non-isolated between input & output
- \* Waterproof, Dust-proof, Shockproof
- \* Low voltage protection
- \* Over load protection
- \* 1 year limited warranty

### Applications

- \* Industrial
- \* Electromotor
- \* Logging Vehicles
- \* Alternative Energy
- \* Telecommunications
- \* LED market etc.
- \* Boat & Yacht
- \* Golf Cart & Forklift



Model No.		WG-72S1210	WG-72S1220
Input	Rated voltage	60V/72V	
	Voltage range	50-90V	
	Efficiency	88%	
	Positive cable length (red)	16-17cm	
	Negative cable length (black)	16-17cm	
	Ignition wire (enable pin)	Optional	
Output	Voltage	12V	
	Current	0 ~ 10A	0 ~ 20A
	Max. rated power	120W	240W
	Voltage regulation	≤1%	
	Load regulation	≤2%	
	No load loss	26mA	35mA
	Ripple & noise	115mVp-p	60-180mVp-p
	Positive cable length (yellow)	16-17cm	
Negative cable length (black)	16-17cm		
Environment	Working temperature	-40°C ~ +80°C	
	Working humidity	10% ~ 90% RH	
	Storage temperature	-40°C ~ +85°C	
Function	Waterproof	IP67	
	Short circuit protection	YES	
	Over load protection	YES	
	Over temperature protection	YES	
	Low voltage protection	YES	
Mechanical	Weight	≤ 300g	
	Size	74*74*32mm	
Other	Shell material	Die-cast aluminum	
	Packaging	White box	

## 72V to 12V 40A DC-DC Buck Converter

### Design Features

- \* Design meeting by CE/RoHS
- \* Mount in almost any location
- \* Compact and light weight
- \* 100% full load burn-in test
- \* Short circuit protection
- \* Over temperature protection
- \* Advanced switch mode design
- \* Non-isolated between input & output
- \* Waterproof, Dust-proof, Shockproof
- \* Low voltage protection
- \* Over load protection
- \* 2 years limited warranty

### Applications

- \* Industrial
- \* Electromotor
- \* Logging Vehicles
- \* Alternative Energy
- \* Telecommunications
- \* LED market etc.
- \* Boat & Yacht
- \* Golf Cart & Forklift



Model No.		WG-72S1240
Input	Rated voltage	24V/36V/48V/60V/72V
	Voltage range	18-90V
	Efficiency	96.2%
	Positive type	Terminal
	Negative type	Terminal
	Ignition wire (enable pin)	Optional
Output	Voltage	12V
	Current	0 ~ 40A
	Max. rated power	480W
	Voltage regulation	≤1%
	Load regulation	≤2%
	No load loss	72mA
	Ripple & noise	180-300mVp-p
	Positive type	Terminal
Negative type	Terminal	
Environment	Working temperature	-40°C ~ +80°C
	Working humidity	10% ~ 90% RH
	Storage temperature	-40°C ~ +85°C
Function	Waterproof	IP67
	Short circuit protection	YES
	Over load protection	YES
	Over temperature protection	YES
	Low voltage protection	YES
Mechanical	Weight	≤ 580g
	Size	100*80*36mm
Other	Shell material	Die-cast aluminum
	Packaging	White box



## 72V to 12V 60A DC-DC Buck Converter

### Design Features

- \* Design meeting by CE/RoHS
- \* Mount in almost any location
- \* Compact and light weight
- \* 100% full load burn-in test
- \* Short circuit protection
- \* Over temperature protection
- \* Advanced switch mode design
- \* Non-isolated between input & output
- \* Waterproof, Dust-proof, Shockproof
- \* Low voltage protection
- \* Over load protection
- \* 2 years limited warranty

### Applications

- \* Industrial
- \* Electromotor
- \* Logging Vehicles
- \* Alternative Energy
- \* Telecommunications
- \* LED market etc.
- \* Boat & Yacht
- \* Golf Cart & Forklift

Model No.	WG-72S1260	
Input	Rated voltage	24V/36V/48V/60V/72V
	Voltage range	18-90V
	Efficiency	94.7%
	Positive type	Terminal
	Negative type	Terminal
	Ignition wire (enable pin)	Optional
Output	Voltage	12V
	Current	0 ~ 60A
	Max. rated power	720W
	Voltage regulation	≤1%
	Load regulation	≤2%
	No load loss	88mA
	Ripple & noise	180-300mVp-p
	Positive type	Terminal
Environment	Negative type	Terminal
	Working temperature	-40°C ~ +80°C
	Working humidity	10% ~ 90% RH
Function	Storage temperature	-40°C ~ +85°C
	Waterproof	IP67
	Short circuit protection	YES
	Over load protection	YES
	Over temperature protection	YES
Mechanical	Low voltage protection	YES
	Weight	≤ 1.2kg
Other	Size	140*120*42.5mm
	Shell material	Die-cast aluminum
	Packaging	White box

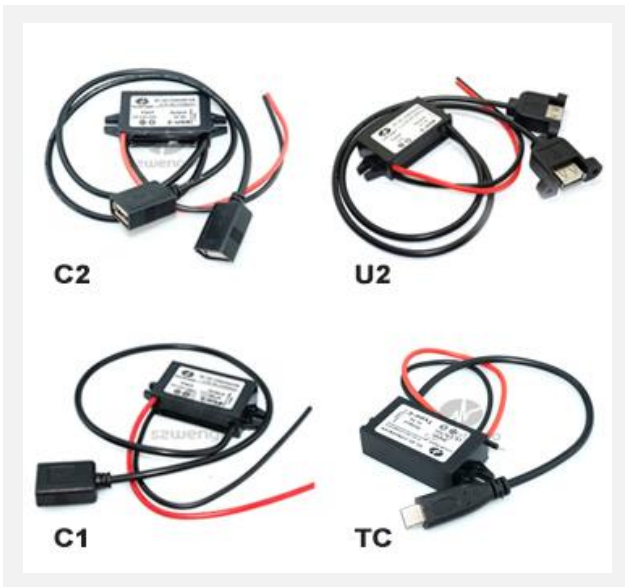
## 12V/24V to 5V 3A DC-DC Buck Converter w./ USB

### Design Features

- \* Design meeting by CE/RoHS
- \* Mount in almost any location
- \* Compact and light weight
- \* 100% full load burn-in test
- \* Short circuit protection
- \* Reverse polarity protection
- \* Advanced switch mode design
- \* Non-isolated between input & output
- \* Waterproof, Dust-proof, Shockproof
- \* Low voltage protection
- \* Over load protection
- \* 1 year limited warranty

### Applications

- \* Industrial
- \* Electromotor
- \* Logging Vehicles
- \* Alternative Energy
- \* Telecommunications
- \* LED market etc.
- \* Boat & Yacht
- \* Golf Cart & Forklift



Model No.		WG-1224S0503C1/C2/U2/TC
Input	Rated voltage	12V/24V
	Voltage range	8-32V
	Efficiency	90-91%
	Positive cable length (red)	16-17cm
	Negative cable length (black)	16-17cm
Output	Voltage	5V
	Current	0 ~ 3A
	Max. rated power	15W
	Voltage regulation	≤1%
	Load regulation	≤2%
	No load loss	0.1W
	Ripple & noise	30mVp-p
	Positive cable length (yellow)	16-17cm
	Negative cable length (black)	16-17cm
Environment	Working temperature	-35°C ~ +80°C
	Working humidity	10% ~ 90% RH
	Storage temperature	-40°C ~ +85°C
Function	Waterproof	IP67
	Short circuit protection	YES
	Over load protection	YES
	Reversing polarity	YES
	Over temperature protection	YES
	Low voltage protection	YES
Mechanical	Weight	≤ 40g
	Size	63*27*14mm
Other	Shell material	ABS flame retardant plastic
	Packaging	Anti-static bag

## 5-36V to 12V 3A DC/DC Boost-Buck Converter

### Design Features

- \* Design meeting by CE/RoHS
- \* Mount in almost any location
- \* Compact and light weight
- \* 100% full load burn-in test
- \* Short circuit protection
- \* Over temperature protection
- \* Advanced switch mode design
- \* Non-isolated between input & output
- \* Waterproof, Dust-proof, Shockproof
- \* Low voltage protection
- \* Over load protection
- \* 1 year limited warranty

### Applications

- \* Industrial
- \* Electromotor
- \* Logging Vehicles
- \* Alternative Energy
- \* Telecommunications
- \* LED market etc.
- \* Boat & Yacht
- \* Golf Cart & Forklift



Model No.		WG5-36S1203
Input	Rated voltage	12V/24V
	Voltage range	5-36V
	Efficiency	90%
	Positive cable length (red)	16-17cm
	Negative cable length (black)	16-17cm
Output	Voltage	12V
	Current	0 ~ 3A
	Max. rated power	36W
	Voltage regulation	≤1%
	Load regulation	≤2%
	No load loss	28mA
	Ripple & noise	150mVp-p
	Positive cable length (yellow)	16-17cm
	Negative cable length (black)	16-17cm
Environment	Working temperature	-40°C ~ +80°C
	Working humidity	10% ~ 90% RH
	Storage temperature	-40°C ~ +85°C
Function	Waterproof	IP67
	Short circuit protection	YES
	Over load protection	YES
	Over temperature protection	YES
	Low voltage protection	YES
Mechanical	Weight	≤ 120g
	Size	64*57*22mm
Other	Shell material	Die-cast aluminum
	Packaging	White box



## 8-36V to 12V 4A DC/DC Boost-Buck Converter

### Design Features

- \* Design meeting by CE/RoHS
- \* Mount in almost any location
- \* Compact and light weight
- \* 100% full load burn-in test
- \* Short circuit protection
- \* Over temperature protection
- \* Advanced switch mode design
- \* Non-isolated between input & output
- \* Waterproof, Dust-proof, Shockproof
- \* Low voltage protection
- \* Over load protection
- \* 1 year limited warranty

### Applications

- \* Industrial
- \* Electromotor
- \* Logging Vehicles
- \* Alternative Energy
- \* Telecommunications
- \* LED market etc.
- \* Boat & Yacht
- \* Golf Cart & Forklift



Model No.		WG8-36S1204P
Input	Rated voltage	12V/24V
	Voltage range	8-36V
	Efficiency	94.8%
	Positive cable length (red)	16-17cm
	Negative cable length (black)	16-17cm
Output	Voltage	12V
	Current	0 ~ 4A
	Max. rated power	48W
	Voltage regulation	≤1%
	Load regulation	≤2%
	No load loss	21mA
	Ripple & noise	135mVp-p
	Positive cable length (yellow)	16-17cm
	Negative cable length (black)	16-17cm
Environment	Working temperature	-40°C ~ +80°C
	Working humidity	10% ~ 90% RH
	Storage temperature	-40°C ~ +85°C
Function	Waterproof	IP67
	Short circuit protection	YES
	Over load protection	YES
	Over temperature protection	YES
	Low voltage protection	YES
Mechanical	Weight	≤ 68g
	Size	63*32*18mm
Other	Shell material	ABS flame retardant plastic
	Packaging	Anti-static bag

## 8-40V to 12V 3A 6A DC/DC Boost-Buck Converter

### Design Features

- \* Design meeting by CE/RoHS
- \* Mount in almost any location
- \* Compact and light weight
- \* 100% full load burn-in test
- \* Short circuit protection
- \* Over temperature protection
- \* Advanced switch mode design
- \* Non-isolated between input & output
- \* Waterproof, Dust-proof, Shockproof
- \* Low voltage protection
- \* Over load protection
- \* 1 year limited warranty

### Applications

- \* Industrial
- \* Electromotor
- \* Logging Vehicles
- \* Alternative Energy
- \* Telecommunications
- \* LED market etc.
- \* Boat & Yacht
- \* Golf Cart & Forklift



Model No.		WG8-40S1203	WG8-36S1206Z
Input	Rated voltage	12V/24V	
	Voltage range	8-40V	8-36V
	Efficiency	89.1%	93.8%
	Positive cable length (red)	16-17cm	
	Negative cable length (black)	16-17cm	
Output	Voltage	12V	
	Current	0 ~ 3A	0 ~ 6A
	Max. rated power	36W	72W
	Voltage regulation	≤1%	
	Load regulation	≤2%	
	No load loss	51mA	20mA
	Ripple & noise	300mVp-p	180mVp-p
	Positive cable length (yellow)	16-17cm	
	Negative cable length (black)	16-17cm	
Environment	Working temperature	-40°C ~ +80°C	
	Working humidity	10% ~ 90% RH	
	Storage temperature	-40°C ~ +85°C	
Function	Waterproof	IP67	
	Short circuit protection	YES	
	Over load protection	YES	
	Over temperature protection	YES	
	Low voltage protection	YES	
Mechanical	Weight	≤ 120g	
	Size	64*57*22mm	
Other	Shell material	Die-cast aluminum	
	Packaging	White box	

## 8-40V to 12V 6A 20A DC/DC Boost-Buck Converter

### Design Features

- \* Design meeting by CE/RoHS
- \* Mount in almost any location
- \* Compact and light weight
- \* 100% full load burn-in test
- \* Short circuit protection
- \* Over temperature protection
- \* Advanced switch mode design
- \* Non-isolated between input & output
- \* Waterproof, Dust-proof, Shockproof
- \* Low voltage protection
- \* Over load protection
- \* 1 year limited warranty

### Applications

- \* Industrial
- \* Electromotor
- \* Logging Vehicles
- \* Alternative Energy
- \* Telecommunications
- \* LED market etc.
- \* Boat & Yacht
- \* Golf Cart & Forklift



Model No.		WG8-40S1206	WG8-40S1210	WG8-40S1220
Input	Rated voltage	12V/24V		
	Voltage range	8-40V		
	Efficiency	90.8%	90.8%	96%
	Positive cable length (red)	16-17cm		
	Negative cable length (black)	16-17cm		
Output	Voltage	12V		
	Current	0 ~ 6A	0 ~ 10A	0 ~ 20A
	Max. rated power	72W	120W	240W
	Voltage regulation	≤1%		
	Load regulation	≤2%		
	No load loss	44mA	53mA	40mA
	Ripple & noise	110mVp-p	200mVp-p	230mVp-p
	Positive cable length (yellow)	16-17cm		
	Negative cable length (black)	16-17cm		
Environment	Working temperature	-40°C ~ +80°C		
	Working humidity	10% ~ 90% RH		
	Storage temperature	-40°C ~ +85°C		
Function	Waterproof	IP67		
	Short circuit protection	YES		
	Over load protection	YES		
	Over temperature protection	YES		
	Low voltage protection	YES		
Mechanical	Weight	≤ 300g		
	Size	74*74*32mm		
Other	Shell material	Die-cast aluminum		
	Packaging	White box		

## 8-40V to 12V 6A 20A DC/DC Boost-Buck Converter

### Design Features

- \* Design meeting by CE/RoHS
- \* Mount in almost any location
- \* Compact and light weight
- \* 100% full load burn-in test
- \* Short circuit protection
- \* Over temperature protection
- \* Advanced switch mode design
- \* Non-isolated between input & output
- \* Waterproof, Dust-proof, Shockproof
- \* Low voltage protection
- \* Over load protection
- \* 2 years limited warranty

### Applications

- \* Industrial
- \* Electromotor
- \* Logging Vehicles
- \* Alternative Energy
- \* Telecommunications
- \* LED market etc.
- \* Boat & Yacht
- \* Golf Cart & Forklift



Model No.		WG8-40S1206M	WG8-40S1210M	WG8-40S1220M
Input	Rated voltage	12V/24V		
	Voltage range	8-40V		
	Efficiency	90.8%	90.8%	96%
	Positive type	Terminal		
	Negative type	Terminal		
	Ignition wire (enable pin)	Optional		
Output	Voltage	12V		
	Current	0 ~ 6A	0 ~ 10A	0 ~ 20A
	Max. rated power	72W	120W	240W
	Voltage regulation	≤1%		
	Load regulation	≤2%		
	No load loss	44mA	53mA	40mA
	Ripple & noise	110mVp-p	200mVp-p	230mVp-p
	Positive type	Terminal		
Environment	Working temperature	-40°C ~ +80°C		
	Working humidity	10% ~ 90% RH		
	Storage temperature	-40°C ~ +85°C		
Function	Waterproof	IP67		
	Short circuit protection	YES		
	Over load protection	YES		
	Over temperature protection	YES		
	Low voltage protection	YES		
Mechanical	Weight	≤ 290g		
	Size	74*74*29.5mm		
Other	Shell material	Die-cast aluminum		
	Packaging	White box		

## 8-40V to 12V 10A 15A DC/DC Boost-Buck Converter

### Design Features

- \* Design meeting by CE/RoHS
- \* Mount in almost any location
- \* Compact and light weight
- \* 100% full load burn-in test
- \* Short circuit protection
- \* Over temperature protection
- \* Advanced switch mode design
- \* Non-isolated between input & output
- \* Waterproof, Dust-proof, Shockproof
- \* Low voltage protection
- \* Over load protection
- \* 2 years limited warranty

### Applications

- \* Industrial
- \* Electromotor
- \* Logging Vehicles
- \* Alternative Energy
- \* Telecommunications
- \* LED market etc.
- \* Boat & Yacht
- \* Golf Cart & Forklift



Model No.		WG8-36S1210L	WG8-36S1215L
Input	Rated voltage	12V/24V	
	Voltage range	8-36V	
	Efficiency	96.8%	96.7%
	Positive type	Terminal	
	Negative type	Terminal	
	Ignition wire (enable pin)	Optional	
Output	Voltage	12V	
	Current	0 ~ 10A	0 ~ 15A
	Max. rated power	120W	180W
	Voltage regulation	≤1%	
	Load regulation	≤2%	
	No load loss	100mA	60mA
	Ripple & noise	100-150mVp-p	120-150mVp-p
	Positive type	Terminal	
Negative type	Terminal		
Environment	Working temperature	-40°C ~ +80°C	
	Working humidity	10% ~ 90% RH	
	Storage temperature	-40°C ~ +85°C	
Function	Waterproof	IP65	
	Short circuit protection	YES	
	Over load protection	YES	
	Over temperature protection	YES	
	Reversing polarity protection	YES	
	Low voltage protection	YES	
Mechanical	Weight	≤ 260g	
	Size	110*70*23mm	
Other	Shell material	Die-cast aluminum	
	Packaging	Color box	



## 8-40V to 12V 25A 30A DC/DC Boost-Buck Converter

### Design Features

- \* Design meeting by CE/RoHS
- \* Mount in almost any location
- \* Compact and light weight
- \* 100% full load burn-in test
- \* Short circuit protection
- \* Over temperature protection
- \* Advanced switch mode design
- \* Non-isolated between input & output
- \* Waterproof, Dust-proof, Shockproof
- \* Low voltage protection
- \* Over load protection
- \* 2 years limited warranty

### Applications

- \* Industrial
- \* Electromotor
- \* Logging Vehicles
- \* Alternative Energy
- \* Telecommunications
- \* LED market etc.
- \* Boat & Yacht
- \* Golf Cart & Forklift



Model No.		WG8-40S1225	WG8-40S1230
Input	Rated voltage	12V/24V	
	Voltage range	8-40V	
	Efficiency	96%	
	Positive cable length (red)	16-17cm	
	Negative cable length (black)	16-17cm	
Output	Voltage	12V	
	Current	0 ~ 25A	0 ~ 30A
	Max. rated power	300W	360W
	Voltage regulation	≤1%	
	Load regulation	≤2%	
	No load loss	60mA	
	Ripple & noise	150-220mVp-p	
	Positive cable length (white)	16-17cm	
	Negative cable length (black)	16-17cm	
Environment	Working temperature	-40°C ~ +80°C	
	Working humidity	10% ~ 90% RH	
	Storage temperature	-40°C ~ +85°C	
Function	Waterproof	IP67	
	Short circuit protection	YES	
	Over load protection	YES	
	Over temperature protection	YES	
	Low voltage protection	YES	
Mechanical	Weight	≤ 550g	
	Size	100*80*39mm	
Other	Shell material	Die-cast aluminum	
	Packaging	White box	

## 10-44V to 12V 50A 60A DC/DC Boost-Buck Converter

### Design Features

- \* Design meeting by CE/RoHS
- \* Mount in almost any location
- \* Compact and light weight
- \* 100% full load burn-in test
- \* Short circuit protection
- \* Over temperature protection
- \* Advanced switch mode design
- \* Non-isolated between input & output
- \* Waterproof, Dust-proof, Shockproof
- \* Low voltage protection
- \* Over load protection
- \* 2 years limited warranty

### Applications

- \* Industrial
- \* Electromotor
- \* Logging Vehicles
- \* Alternative Energy
- \* Telecommunications
- \* LED market etc.
- \* Boat & Yacht
- \* Golf Cart & Forklift



Model No.		WG10-44S1250	WG10-44S1260
Input	Rated voltage	12V/24V/36V	
	Voltage range	10-44V	
	Efficiency	96%	94.8%
	Positive type	Terminal	
	Negative type	Terminal	
	Ignition wire (enable pin)	Optional	
Output	Voltage	12V	
	Current	0 ~ 50A	0 ~ 60A
	Max. rated power	600W	720W
	Voltage regulation	≤1%	
	Load regulation	≤2%	
	No load loss	120mA	120mA
	Ripple & noise	181-350mVp-p	181-350mVp-p
	Positive type	Terminal	
Negative type	Terminal		
Environment	Working temperature	-40°C ~ +80°C	
	Working humidity	10% ~ 90% RH	
	Storage temperature	-40°C ~ +85°C	
Function	Waterproof	IP67	
	Short circuit protection	YES	
	Over load protection	YES	
	Over temperature protection	YES	
	Low voltage protection	YES	
Mechanical	Weight	≤ 1.2kg	
	Size	140*120*42.5mm	
Other	Shell material	Die-cast aluminum	
	Packaging	White box	

## 8-40V to 13.8V 3A DC/DC Boost-Buck Converter

### Design Features

- \* Design meeting by CE/RoHS
- \* Mount in almost any location
- \* Compact and light weight
- \* 100% full load burn-in test
- \* Short circuit protection
- \* Over temperature protection
- \* Advanced switch mode design
- \* Non-isolated between input & output
- \* Waterproof, Dust-proof, Shockproof
- \* Low voltage protection
- \* Over load protection
- \* 1 year limited warranty

### Applications

- \* Industrial
- \* Electromotor
- \* Logging Vehicles
- \* Alternative Energy
- \* Telecommunications
- \* LED market etc.
- \* Boat & Yacht
- \* Golf Cart & Forklift



Model No.		WG8-40S13R803
Input	Rated voltage	12V/24V
	Voltage range	8-40V
	Efficiency	89.1%
	Positive cable length (red)	16-17cm
	Negative cable length (black)	16-17cm
Output	Voltage	13.8V
	Current	0 ~ 3A
	Max. rated power	41W
	Voltage regulation	≤1%
	Load regulation	≤2%
	No load loss	51mA
	Ripple & noise	300mVp-p
	Positive cable length (yellow)	16-17cm
	Negative cable length (black)	16-17cm
Environment	Working temperature	-40°C ~ +80°C
	Working humidity	10% ~ 90% RH
	Storage temperature	-40°C ~ +85°C
Function	Waterproof	IP67
	Short circuit protection	YES
	Over load protection	YES
	Over temperature protection	YES
	Low voltage protection	YES
Mechanical	Weight	≤ 120g
	Size	64*57*22mm
Other	Shell material	Die-cast aluminum
	Packaging	White box

## 8-40V to 13.8V 5A 20A DC/DC Boost-Buck Converter

### Design Features

- \* Design meeting by CE/RoHS
- \* Mount in almost any location
- \* Compact and light weight
- \* 100% full load burn-in test
- \* Short circuit protection
- \* Over temperature protection
- \* Advanced switch mode design
- \* Non-isolated between input & output
- \* Waterproof, Dust-proof, Shockproof
- \* Low voltage protection
- \* Over load protection
- \* 1 year limited warranty

### Applications

- \* Industrial
- \* Electromotor
- \* Logging Vehicles
- \* Alternative Energy
- \* Telecommunications
- \* LED market etc.
- \* Boat & Yacht
- \* Golf Cart & Forklift



Model No.		WG8-40S13R805	WG8-40S13R810	WG8-40S13R820
Input	Rated voltage	12V/24V		
	Voltage range	8-40V		
	Efficiency	90.8%	90.8%	96%
	Positive cable length (red)	16-17cm		
	Negative cable length (black)	16-17cm		
Output	Voltage	13.8V		
	Current	0 ~ 5A	0 ~ 10A	0 ~ 20A
	Max. rated power	69W	138W	276W
	Voltage regulation	≤1%		
	Load regulation	≤2%		
	No load loss	44mA	53mA	40mA
	Ripple & noise	110mVp-p	200mVp-p	230mVp-p
	Positive cable length (yellow)	16-17cm		
	Negative cable length (black)	16-17cm		
Environment	Working temperature	-40°C ~ +80°C		
	Working humidity	10% ~ 90% RH		
	Storage temperature	-40°C ~ +85°C		
Function	Waterproof	IP67		
	Short circuit protection	YES		
	Over load protection	YES		
	Over temperature protection	YES		
	Low voltage protection	YES		
Mechanical	Weight	≤ 300g		
	Size	74*74*32mm		
Other	Shell material	Die-cast aluminum		
	Packaging	White box		

## 8-40V to 13.8V 25A 30A DC/DC Boost-Buck Converter

### Design Features

- \* Design meeting by CE/RoHS
- \* Mount in almost any location
- \* Compact and light weight
- \* 100% full load burn-in test
- \* Short circuit protection
- \* Over temperature protection
- \* Advanced switch mode design
- \* Non-isolated between input & output
- \* Waterproof, Dust-proof, Shockproof
- \* Low voltage protection
- \* Over load protection
- \* 2 years limited warranty

### Applications

- \* Industrial
- \* Electromotor
- \* Logging Vehicles
- \* Alternative Energy
- \* Telecommunications
- \* LED market etc.
- \* Boat & Yacht
- \* Golf Cart & Forklift



Model No.		WG8-40S13R825	WG8-40S13R830
Input	Rated voltage	12V/24V	
	Voltage range	8-40V	
	Efficiency	96%	
	Positive cable length (red)	16-17cm	
	Negative cable length (black)	16-17cm	
Output	Voltage	13.8V	
	Current	0 ~ 25A	0 ~ 30A
	Max. rated power	345W	414W
	Voltage regulation	≤1%	
	Load regulation	≤2%	
	No load loss	60mA	
	Ripple & noise	150-220mVp-p	
	Positive cable length (white)	16-17cm	
	Negative cable length (black)	16-17cm	
Environment	Working temperature	-40°C ~ +80°C	
	Working humidity	10% ~ 90% RH	
	Storage temperature	-40°C ~ +85°C	
Function	Waterproof	IP67	
	Short circuit protection	YES	
	Over load protection	YES	
	Over temperature protection	YES	
	Low voltage protection	YES	
Mechanical	Weight	≤ 550g	
	Size	100*80*39mm	
Other	Shell material	Die-cast aluminum	
	Packaging	White box	



## 10-44V to 13.8V 55A DC/DC Boost-Buck Converter

### Design Features

- \* Design meeting by CE/RoHS
- \* Mount in almost any location
- \* Compact and light weight
- \* 100% full load burn-in test
- \* Short circuit protection
- \* Over temperature protection
- \* Advanced switch mode design
- \* Non-isolated between input & output
- \* Waterproof, Dust-proof, Shockproof
- \* Low voltage protection
- \* Over load protection
- \* 2 years limited warranty

### Applications

- \* Industrial
- \* Electromotor
- \* Logging Vehicles
- \* Alternative Energy
- \* Telecommunications
- \* LED market etc.
- \* Boat & Yacht
- \* Golf Cart & Forklift



Model No.		WG10-44S13R840	WG10-44S13R855
Input	Rated voltage	12V/24V/36V	
	Voltage range	10-44V	
	Efficiency	96.6%	95.8%
	Positive type	Terminal	
	Negative type	Terminal	
	Ignition wire (enable pin)	Optional	
Output	Voltage	13.8V	
	Current	0 ~ 40A	0 ~ 55A
	Max. rated power	552W	759W
	Voltage regulation	≤1%	
	Load regulation	≤2%	
	No load loss	110mA	110mA
	Ripple & noise	141-350mVp-p	153-350mVp-p
	Positive type	Terminal	
Negative type	Terminal		
Environment	Working temperature	-40°C ~ +80°C	
	Working humidity	10% ~ 90% RH	
	Storage temperature	-40°C ~ +85°C	
Function	Waterproof	IP67	
	Short circuit protection	YES	
	Over load protection	YES	
	Over temperature protection	YES	
	Low voltage protection	YES	
Mechanical	Weight	≤ 1.2kg	
	Size	140*120*42.5mm	
Other	Shell material	Die-cast aluminum	
	Packaging	White box	

## 9-40V to 19V 5A 10A DC/DC Boost-Buck Converter

### Design Features

- \* Design meeting by CE/RoHS
- \* Mount in almost any location
- \* Compact and light weight
- \* 100% full load burn-in test
- \* Short circuit protection
- \* Over temperature protection
- \* Advanced switch mode design
- \* Non-isolated between input & output
- \* Waterproof, Dust-proof, Shockproof
- \* Low voltage protection
- \* Over load protection
- \* 1 year limited warranty

### Applications

- \* Industrial
- \* Electromotor
- \* Logging Vehicles
- \* Alternative Energy
- \* Telecommunications
- \* LED market etc.
- \* Boat & Yacht
- \* Golf Cart & Forklift



Model No.		WG9-40S1905	WG9-40S1910
Input	Rated voltage	12V/24V	
	Voltage range	9-40V	
	Efficiency	93%	98%
	Positive cable length (red)	16-17cm	
	Negative cable length (black)	16-17cm	
Output	Voltage	19V	
	Current	0 ~ 5A	0 ~ 10A
	Max. rated power	95W	190W
	Voltage regulation	≤1%	
	Load regulation	≤2%	
	No load loss	55mA	67mA
	Ripple & noise	170mVp-p	200mVp-p
	Positive cable length (yellow)	16-17cm	
	Negative cable length (black)	16-17cm	
Environment	Working temperature	-40°C ~ +80°C	
	Working humidity	10% ~ 90% RH	
	Storage temperature	-40°C ~ +85°C	
Function	Waterproof	IP67	
	Short circuit protection	YES	
	Over load protection	YES	
	Over temperature protection	YES	
	Low voltage protection	YES	
Mechanical	Weight	≤ 300g	
	Size	74*74*32mm	
Other	Shell material	Die-cast aluminum	
	Packaging	White box	

## 9-40V to 19V 15A DC/DC Boost-Buck Converter

### Design Features

- \* Design meeting by CE/RoHS
- \* Mount in almost any location
- \* Compact and light weight
- \* 100% full load burn-in test
- \* Short circuit protection
- \* Over temperature protection
- \* Advanced switch mode design
- \* Non-isolated between input & output
- \* Waterproof, Dust-proof, Shockproof
- \* Low voltage protection
- \* Over load protection
- \* 2 years limited warranty

### Applications

- \* Industrial
- \* Electromotor
- \* Logging Vehicles
- \* Alternative Energy
- \* Telecommunications
- \* LED market etc.
- \* Boat & Yacht
- \* Golf Cart & Forklift



Model No.		WG9-40S1915
Input	Rated voltage	12V/24V
	Voltage range	9-40V
	Efficiency	98.5%
	Positive cable length (red)	16-17cm
	Negative cable length (black)	16-17cm
Output	Voltage	19V
	Current	0 ~ 15A
	Max. rated power	285W
	Voltage regulation	≤1%
	Load regulation	≤2%
	No load loss	120mA
	Ripple & noise	200mVp-p
	Positive cable length (white)	16-17cm
Negative cable length (black)	16-17cm	
Environment	Working temperature	-40°C ~ +80°C
	Working humidity	10% ~ 90% RH
	Storage temperature	-40°C ~ +85°C
Function	Waterproof	IP67
	Short circuit protection	YES
	Over load protection	YES
	Over temperature protection	YES
	Low voltage protection	YES
Mechanical	Weight	≤ 550g
	Size	100*80*39mm
Other	Shell material	Die-cast aluminum
	Packaging	White box

## 8-36V to 24V 2A DC/DC Boost-Buck Converter

### Design Features

- \* Design meeting by CE/RoHS
- \* Mount in almost any location
- \* Compact and light weight
- \* 100% full load burn-in test
- \* Short circuit protection
- \* Over temperature protection
- \* Advanced switch mode design
- \* Non-isolated between input & output
- \* Waterproof, Dust-proof, Shockproof
- \* Low voltage protection
- \* Over load protection
- \* 1 year limited warranty

### Applications

- \* Industrial
- \* Electromotor
- \* Logging Vehicles
- \* Alternative Energy
- \* Telecommunications
- \* LED market etc.
- \* Boat & Yacht
- \* Golf Cart & Forklift



Model No.		WG8-36S2402P
Input	Rated voltage	12V/24V
	Voltage range	8-36V
	Efficiency	96.5%
	Positive cable length (red)	16-17cm
	Negative cable length (black)	16-17cm
Output	Voltage	24V
	Current	0 ~ 2A
	Max. rated power	48W
	Voltage regulation	≤1%
	Load regulation	≤2%
	No load loss	24mA
	Ripple & noise	88-150mVp-p
	Positive cable length (yellow)	16-17cm
	Negative cable length (black)	16-17cm
Environment	Working temperature	-40°C ~ +80°C
	Working humidity	10% ~ 90% RH
	Storage temperature	-40°C ~ +85°C
Function	Waterproof	IP67
	Short circuit protection	YES
	Over load protection	YES
	Over temperature protection	YES
	Low voltage protection	YES
Mechanical	Weight	≤ 68g
	Size	63*32*18mm
Other	Shell material	ABS flame retardant plastic
	Packaging	Anti-static bag

## 9-40V to 24V 3A DC/DC Boost-Buck Converter

### Design Features

- \* Design meeting by CE/RoHS
- \* Mount in almost any location
- \* Compact and light weight
- \* 100% full load burn-in test
- \* Short circuit protection
- \* Over temperature protection
- \* Advanced switch mode design
- \* Non-isolated between input & output
- \* Waterproof, Dust-proof, Shockproof
- \* Low voltage protection
- \* Over load protection
- \* 1 year limited warranty

### Applications

- \* Industrial
- \* Electromotor
- \* Logging Vehicles
- \* Alternative Energy
- \* Telecommunications
- \* LED market etc.
- \* Boat & Yacht
- \* Golf Cart & Forklift



Model No.		WG9-40S2403Z
Input	Rated voltage	12V/24V
	Voltage range	8-40V
	Efficiency	93.5%
	Positive cable length (red)	16-17cm
	Negative cable length (black)	16-17cm
Output	Voltage	24V
	Current	0 ~ 3A
	Max. rated power	72W
	Voltage regulation	≤1%
	Load regulation	≤2%
	No load loss	30mA
	Ripple & noise	133-300mVp-p
	Positive cable length (yellow)	16-17cm
	Negative cable length (black)	16-17cm
Environment	Working temperature	-40°C ~ +80°C
	Working humidity	10% ~ 90% RH
	Storage temperature	-40°C ~ +85°C
Function	Waterproof	IP67
	Short circuit protection	YES
	Over load protection	YES
	Over temperature protection	YES
	Low voltage protection	YES
Mechanical	Weight	≤ 120g
	Size	64*57*22mm
Other	Shell material	Die-cast aluminum
	Packaging	White box



## 9-40V to 24V 6A 10A DC/DC Boost-Buck Converter

### Design Features

- \* Design meeting by CE/RoHS
- \* Mount in almost any location
- \* Compact and light weight
- \* 100% full load burn-in test
- \* Short circuit protection
- \* Over temperature protection
- \* Advanced switch mode design
- \* Non-isolated between input & output
- \* Waterproof, Dust-proof, Shockproof
- \* Low voltage protection
- \* Over load protection
- \* 1 year limited warranty

### Applications

- \* Industrial
- \* Electromotor
- \* Logging Vehicles
- \* Alternative Energy
- \* Telecommunications
- \* LED market etc.
- \* Boat & Yacht
- \* Golf Cart & Forklift



Model No.		WG9-40S2406	WG9-40S2410	WG18-40S2420
Input	Rated voltage	12V/24V		24V
	Voltage range	9-40V		18-40V
	Efficiency	92.7%	97.8%	97.4%
	Positive cable length (red)	16-17cm		
	Negative cable length (black)	16-17cm		
Output	Voltage	24V		
	Current	0 ~ 6A	0 ~ 10A	0 ~ 20A
	Max. rated power	144W	240W	480W
	Voltage regulation	≤1%		
	Load regulation	≤2%		
	No load loss	55mA	67mA	110mA
	Ripple & noise	170mVp-p	200mVp-p	230mVp-p
	Positive cable length (yellow)	16-17cm		
	Negative cable length (black)	16-17cm		
Environment	Working temperature	-40°C ~ +80°C		
	Working humidity	10% ~ 90% RH		
	Storage temperature	-40°C ~ +85°C		
Function	Waterproof	IP67		
	Short circuit protection	YES		
	Over load protection	YES		
	Over temperature protection	YES		
	Low voltage protection	YES		
Mechanical	Weight	≤ 300g		
	Size	74*74*32mm		
Other	Shell material	Die-cast aluminum		
	Packaging	White box		

## 9-40V to 24V 6A 10A DC/DC Boost-Buck Converter

### Design Features

- \* Design meeting by CE/RoHS
- \* Mount in almost any location
- \* Compact and light weight
- \* 100% full load burn-in test
- \* Short circuit protection
- \* Over temperature protection
- \* Advanced switch mode design
- \* Non-isolated between input & output
- \* Waterproof, Dust-proof, Shockproof
- \* Low voltage protection
- \* Over load protection
- \* 1 year limited warranty

### Applications

- \* Industrial
- \* Electromotor
- \* Logging Vehicles
- \* Alternative Energy
- \* Telecommunications
- \* LED market etc.
- \* Boat & Yacht
- \* Golf Cart & Forklift



Model No.		WG9-40S2406M	WG9-40S2410M	WG18-40S2420M
Input	Rated voltage	12V/24V		24V
	Voltage range	9-40V		18-40V
	Efficiency	92.7%	97.8%	97.4%
	Positive type	Terminal		
	Negative type	Terminal		
	Ignition wire (enable pin)	Optional		
Output	Voltage	24V		
	Current	0 ~ 6A	0 ~ 10A	0 ~ 20A
	Max. rated power	144W	240W	480W
	Voltage regulation	≤1%		
	Load regulation	≤2%		
	No load loss	55mA	67mA	110mA
	Ripple & noise	170mVp-p	200mVp-p	230mVp-p
	Positive type	Terminal		
Negative type	Terminal			
Environment	Working temperature	-40°C ~ +80°C		
	Working humidity	10% ~ 90% RH		
	Storage temperature	-40°C ~ +85°C		
Function	Waterproof	IP67		
	Short circuit protection	YES		
	Over load protection	YES		
	Over temperature protection	YES		
	Low voltage protection	YES		
Mechanical	Weight	≤ 290g		
	Size	74*74*29.5mm		
Other	Shell material	Die-cast aluminum		
	Packaging	White box		



## 9-36V to 24V 6A 15A DC/DC Boost-Buck Converter

### Design Features

- \* Design meeting by CE/RoHS
- \* Mount in almost any location
- \* Compact and light weight
- \* 100% full load burn-in test
- \* Short circuit protection
- \* Over temperature protection
- \* Advanced switch mode design
- \* Non-isolated between input & output
- \* Waterproof, Dust-proof, Shockproof
- \* Low voltage protection
- \* Over load protection
- \* 2 years limited warranty

### Applications

- \* Industrial
- \* Electromotor
- \* Logging Vehicles
- \* Alternative Energy
- \* Telecommunications
- \* LED market etc.
- \* Boat & Yacht
- \* Golf Cart & Forklift

Model No.	WG9-36S2406L	WG18-36S2415L	
Input	Rated voltage	12V/24V	
	Voltage range	9-36V	
	Efficiency	97.8%	
	Positive type	Terminal	
	Negative type	Terminal	
	Ignition wire (enable pin)	Optional	
Output	Voltage	24V	
	Current	0 ~ 6A	0 ~ 15A
	Max. rated power	144W	360W
	Voltage regulation	≤1%	
	Load regulation	≤2%	
	No load loss	89mA	75mA
	Ripple & noise	105-150mVp-p	180-220mVp-p
	Positive type	Terminal	
Negative type	Terminal		
Environment	Working temperature	-40°C ~ +80°C	
	Working humidity	10% ~ 90% RH	
	Storage temperature	-40°C ~ +85°C	
Function	Waterproof	IP65	
	Short circuit protection	YES	
	Over load protection	YES	
	Over temperature protection	YES	
	Reversing polarity protection	YES	
	Low voltage protection	YES	
Mechanical	Weight	≤ 260g	
	Size	110*70*23mm	
Other	Shell material	Die-cast aluminum	
	Packaging	Color box	

### 9-40V to 24V 15A 30A DC/DC Boost-Buck Converter

#### Design Features

- \* Design meeting by CE/RoHS
- \* Mount in almost any location
- \* Compact and light weight
- \* 100% full load burn-in test
- \* Short circuit protection
- \* Over temperature protection
- \* Advanced switch mode design
- \* Non-isolated between input & output
- \* Waterproof, Dust-proof, Shockproof
- \* Low voltage protection
- \* Over load protection
- \* 2 years limited warranty

#### Applications

- \* Industrial
- \* Electromotor
- \* Logging Vehicles
- \* Alternative Energy
- \* Telecommunications
- \* LED market etc.
- \* Boat & Yacht
- \* Golf Cart & Forklift



Model No.		WG9-40S2415	WG18-40S2425	WG18-40S2430
Input	Rated voltage	12V/24V		24V
	Voltage range	8-40V		18-40V
	Efficiency	98.2%		97.6%
	Positive cable length (red)	16-17cm		
	Negative cable length (black)	16-17cm		
Output	Voltage	24V		
	Current	0 ~ 15A	0 ~ 25A	0 ~ 30A
	Max. rated power	360W	600W	720W
	Voltage regulation	≤1%		
	Load regulation	≤2%		
	No load loss	120mA	120mA	120mA
	Ripple & noise	200-290mVp-p	240-450mVp-p	240-450mVp-p
	Positive cable length (white)	16-17cm		
	Negative cable length (black)	16-17cm		
Environment	Working temperature	-40°C ~ +80°C		
	Working humidity	10% ~ 90% RH		
	Storage temperature	-40°C ~ +85°C		
Function	Waterproof	IP67		
	Short circuit protection	YES		
	Over load protection	YES		
	Over temperature protection	YES		
	Low voltage protection	YES		
Mechanical	Weight	≤ 550g		
	Size	100*80*39mm		
Other	Shell material	Die-cast aluminum		
	Packaging	White box		

## 10-44V to 24V 30A DC/DC Boost-Buck Converter

### Design Features

- \* Design meeting by CE/RoHS
- \* Mount in almost any location
- \* Compact and light weight
- \* 100% full load burn-in test
- \* Short circuit protection
- \* Over temperature protection
- \* Advanced switch mode design
- \* Non-isolated between input & output
- \* Waterproof, Dust-proof, Shockproof
- \* Low voltage protection
- \* Over load protection
- \* 2 years limited warranty

### Applications

- \* Industrial
- \* Electromotor
- \* Logging Vehicles
- \* Alternative Energy
- \* Telecommunications
- \* LED market etc.
- \* Boat & Yacht
- \* Golf Cart & Forklift



Model No.		WG10-44S2430
Input	Rated voltage	12V/24V/36V
	Voltage range	10-44V
	Efficiency	95.3%
	Positive type	Terminal
	Negative type	Terminal
	Ignition wire (enable pin)	Optional
Output	Voltage	24V
	Current	0 ~ 30A
	Max. rated power	720W
	Voltage regulation	≤1%
	Load regulation	≤2%
	No load loss	150mA
	Ripple & noise	201-400mVp-p
	Positive type	Terminal
Negative type	Terminal	
Environment	Working temperature	-40°C ~ +80°C
	Working humidity	10% ~ 90% RH
	Storage temperature	-40°C ~ +85°C
Function	Waterproof	IP67
	Short circuit protection	YES
	Over load protection	YES
	Over temperature protection	YES
	Low voltage protection	YES
Mechanical	Weight	≤ 1.2kg
	Size	140*120*42.5mm
Other	Shell material	Die-cast aluminum
	Packaging	White box



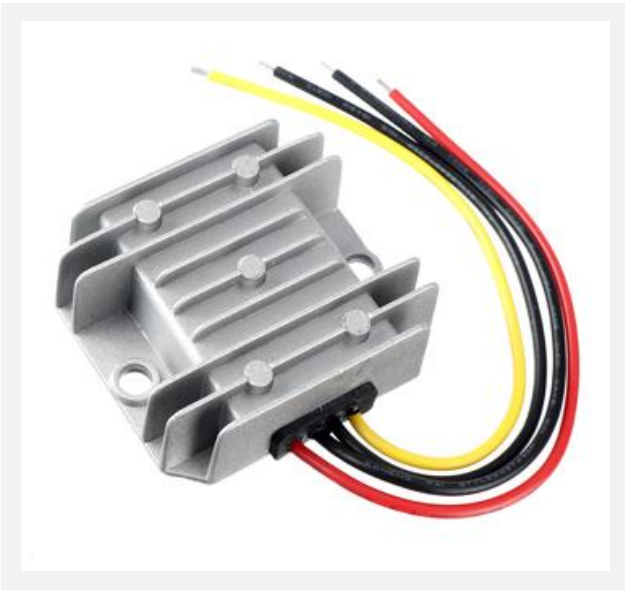
## 12V to 24V 3A 5A DC-DC Boost Converter

### Design Features

- \* Design meeting by CE/RoHS
- \* Mount in almost any location
- \* Compact and light weight
- \* 100% full load burn-in test
- \* Over temperature protection
- \* 1 year limited warranty
- \* Advanced switch mode design
- \* Non-isolated between input & output
- \* Waterproof, Dust-proof, Shockproof
- \* Low voltage protection
- \* Over load protection

### Applications

- \* Industrial
- \* Electromotor
- \* Logging Vehicles
- \* Alternative Energy
- \* Telecommunications
- \* LED market etc.
- \* Boat & Yacht
- \* Golf Cart & Forklift



Model No.		WG-12S2403	WG-12S2405Z
Input	Rated voltage	12V	
	Voltage range	10-23V	
	Efficiency	95%	
	Positive cable length (red)	16-17cm	
	Negative cable length (black)	16-17cm	
Output	Voltage	24V	
	Current	0 ~ 3A	0 ~ 5A
	Max. rated power	72W	120W
	Voltage regulation	≤1%	
	Load regulation	≤2%	
	No load loss	51mA	20mA
	Ripple & noise	260mVp-p	220mVp-p
	Positive cable length (yellow)	16-17cm	
Negative cable length (black)	16-17cm		
Environment	Working temperature	-40°C ~ +80°C	
	Working humidity	10% ~ 90% RH	
	Storage temperature	-40°C ~ +85°C	
Function	Waterproof	IP67	
	Over load protection	YES	
	Over temperature protection	YES	
	Low voltage protection	YES	
Mechanical	Weight	≤ 120g	
	Size	64*57*22mm	
Other	Shell material	Die-cast aluminum	
	Packaging	White box	

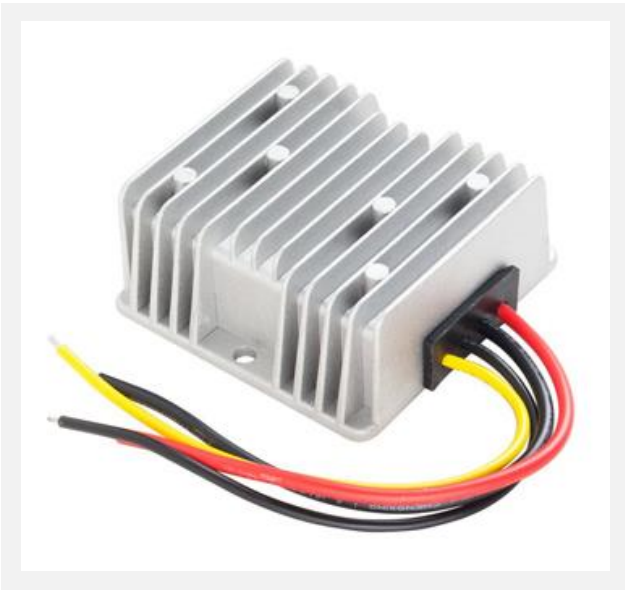
## 12V to 24V 5A 10A 15A DC-DC Boost Converter

### Design Features

- \* Design meeting by CE/RoHS
- \* Mount in almost any location
- \* Compact and light weight
- \* 100% full load burn-in test
- \* Over temperature protection
- \* 1 year limited warranty
- \* Advanced switch mode design
- \* Non-isolated between input & output
- \* Waterproof, Dust-proof, Shockproof
- \* Low voltage protection
- \* Over load protection

### Applications

- \* Industrial
- \* Electromotor
- \* Logging Vehicles
- \* Alternative Energy
- \* Telecommunications
- \* LED market etc.
- \* Boat & Yacht
- \* Golf Cart & Forklift



Model No.		WG-12S2405	WG-12S2410	WG-12S2415Z
Input	Rated voltage	12V		
	Voltage range	10-23V		
	Efficiency	95%	96%	96%
	Positive cable length (red)	16-17cm		
	Negative cable length (black)	16-17cm		
Output	Voltage	24V		
	Current	0 ~ 5A	0 ~ 10A	0 ~ 15A
	Max. rated power	120W	240W	360W
	Voltage regulation	≤1%		
	Load regulation	≤2%		
	No load loss	20mA	50mA	50mA
	Ripple & noise	220mVp-p	220mVp-p	300mVp-p
	Positive cable length (yellow)	16-17cm		
Negative cable length (black)	16-17cm			
Environment	Working temperature	-40°C ~ +80°C		
	Working humidity	10% ~ 90% RH		
	Storage temperature	-40°C ~ +85°C		
Function	Waterproof	IP67		
	Over load protection	YES		
	Over temperature protection	YES		
	Low voltage protection	YES		
Mechanical	Weight	≤ 300g		
	Size	74*74*32mm		
Other	Shell material	Die-cast aluminum		
	Packaging	White box		

## 12V to 24V 10A 15A DC-DC Boost Converter

### Design Features

- \* Design meeting by CE/RoHS
- \* Mount in almost any location
- \* Compact and light weight
- \* 100% full load burn-in test
- \* Over temperature protection
- \* 1 year limited warranty
- \* Advanced switch mode design
- \* Non-isolated between input & output
- \* Waterproof, Dust-proof, Shockproof
- \* Low voltage protection
- \* Over load protection

### Applications

- \* Industrial
- \* Electromotor
- \* Logging Vehicles
- \* Alternative Energy
- \* Telecommunications
- \* LED market etc.
- \* Boat & Yacht
- \* Golf Cart & Forklift



Model No.		WG-12S2410M	WG-12S2415M
Input	Rated voltage	12V	
	Voltage range	10-23V	
	Efficiency	96%	96%
	Positive type	Terminal	
	Negative type	Terminal	
Output	Voltage	24V	
	Current	0 ~ 10A	0 ~ 15A
	Max. rated power	240W	360W
	Voltage regulation	≤1%	
	Load regulation	≤2%	
	No load loss	50mA	50mA
	Ripple & noise	220mVp-p	300mVp-p
	Positive type	Terminal	
	Negative type	Terminal	
Environment	Working temperature	-40°C ~ +80°C	
	Working humidity	10% ~ 90% RH	
	Storage temperature	-40°C ~ +85°C	
Function	Waterproof	IP67	
	Over load protection	YES	
	Over temperature protection	YES	
	Low voltage protection	YES	
Mechanical	Weight	≤ 290g	
	Size	74*74*29.5mm	
Other	Shell material	Die-cast aluminum	
	Packaging	White box	

## 12V to 24V 20A DC-DC Boost Converter

### Design Features

- \* Design meeting by CE/RoHS
- \* Mount in almost any location
- \* Compact and light weight
- \* 100% full load burn-in test
- \* Over temperature protection
- \* 1 year limited warranty
- \* Advanced switch mode design
- \* Non-isolated between input & output
- \* Waterproof, Dust-proof, Shockproof
- \* Low voltage protection
- \* Over load protection

### Applications

- \* Industrial
- \* Electromotor
- \* Logging Vehicles
- \* Alternative Energy
- \* Telecommunications
- \* LED market etc.
- \* Boat & Yacht
- \* Golf Cart & Forklift



Model No.		WG-12S2420
Input	Rated voltage	12V
	Voltage range	10-20V
	Efficiency	96.6%
	Positive cable length (red)	16-17cm
	Negative cable length (black)	16-17cm
Output	Voltage	24V
	Current	0 ~ 20A
	Max. rated power	480W
	Voltage regulation	≤1%
	Load regulation	≤2%
	No load loss	46mA
	Ripple & noise	248-400mVp-p
	Positive cable length (white)	16-17cm
Negative cable length (black)	16-17cm	
Environment	Working temperature	-40°C ~ +80°C
	Working humidity	10% ~ 90% RH
	Storage temperature	-40°C ~ +85°C
Function	Waterproof	IP67
	Over load protection	YES
	Over temperature protection	YES
	Low voltage protection	YES
Mechanical	Weight	≤ 550g
	Size	100*80*39mm
Other	Shell material	Die-cast aluminum
	Packaging	White box

## 12V to 24V 30A 40A 50A DC-DC Boost Converter

### Design Features

- \* Design meeting by CE/RoHS
- \* Mount in almost any location
- \* Compact and light weight
- \* 100% full load burn-in test
- \* Over temperature protection
- \* 2 years limited warranty
- \* Advanced switch mode design
- \* Non-isolated between input & output
- \* Waterproof, Dust-proof, Shockproof
- \* Low voltage protection
- \* Over load protection

### Applications

- \* Industrial
- \* Electromotor
- \* Logging Vehicles
- \* Alternative Energy
- \* Telecommunications
- \* LED market etc.
- \* Boat & Yacht
- \* Golf Cart & Forklift



Model No.		WG-12S2430M	WG-12S2440M	WG-12S2450M
Input	Rated voltage	12V		
	Voltage range	10-20V		
	Efficiency	95.6%	96.8%	97.8%
	Positive type	Terminal		
	Negative type	Terminal		
	Ignition wire (enable pin)	Optional		
Output	Voltage	24V		
	Current	0 ~ 30A	0 ~ 40A	0 ~ 50A
	Max. rated power	720W	960W	1200W
	Voltage regulation	≤1%		
	Load regulation	≤2%		
	No load loss	30mA	25mA	140mA
	Ripple & noise	340-980mVp-p	350-950mVp-p	360-800mVp-p
	Positive type	Terminal		
Negative type	Terminal			
Environment	Working temperature	-40°C ~ +80°C		
	Working humidity	10% ~ 90% RH		
	Storage temperature	-40°C ~ +85°C		
Function	Waterproof	IP67		
	Short circuit protection	NO		
	Over load protection	YES		
	Over temperature protection	YES		
	Low voltage protection	YES		
Mechanical	Weight	≤ 1.2kg		
	Size	140*120*42.5mm		
Other	Shell material	Die-cast aluminum		
	Packaging	White box		



## 12V to 24V 30A DC-DC Boost Converter

### Design Features

- \* Design meeting by CE/RoHS
- \* Mount in almost any location
- \* Compact and light weight
- \* 100% full load burn-in test
- \* Over temperature protection
- \* 1 year limited warranty
- \* Advanced switch mode design
- \* Non-isolated between input & output
- \* Waterproof, Dust-proof, Shockproof
- \* Low voltage protection
- \* Over load protection

### Applications

- \* Industrial
- \* Electromotor
- \* Logging Vehicles
- \* Alternative Energy
- \* Telecommunications
- \* LED market etc.
- \* Boat & Yacht
- \* Golf Cart & Forklift



Model No.	WG-12S2430	
Input	Rated voltage	12V
	Voltage range	10-16V
	Efficiency	95%
	Positive type	Terminal
	Negative type	Terminal
	Ignition wire (enable pin)	Optional
Output	Voltage	24V
	Current	0 ~ 30A
	Max. rated power	720W
	Voltage regulation	≤1%
	Load regulation	≤2%
	No load loss	70mA
	Ripple & noise	240mVp-p
	Positive type	Terminal
Negative type	Terminal	
Environment	Working temperature	-40°C ~ +80°C
	Working humidity	10% ~ 90% RH
	Storage temperature	-40°C ~ +85°C
Function	Waterproof	IP67
	Over load protection	YES
	Over temperature protection	YES
	Low voltage protection	YES
Mechanical	Weight	≤ 1.55kg
	Size	150*127*63mm
Other	Shell material	Aluminum
	Packaging	Brown box

## 12V to 24V 40A DC-DC Boost Converter

### Design Features

- \* Design meeting by CE/RoHS
- \* Mount in almost any location
- \* Compact and light weight
- \* 100% full load burn-in test
- \* Over temperature protection
- \* 1 year limited warranty
- \* Advanced switch mode design
- \* Non-isolated between input & output
- \* Waterproof, Dust-proof, Shockproof
- \* Low voltage protection
- \* Over load protection

### Applications

- \* Industrial
- \* Electromotor
- \* Logging Vehicles
- \* Alternative Energy
- \* Telecommunications
- \* LED market etc.
- \* Boat & Yacht
- \* Golf Cart & Forklift



Model No.	WG-12S2440	
Input	Rated voltage	12V
	Voltage range	10-16V
	Efficiency	94%
	Positive type	Terminal
	Negative type	Terminal
	Ignition wire (enable pin)	Optional
Output	Voltage	24V
	Current	0 ~ 40A
	Max. rated power	960W
	Voltage regulation	≤1%
	Load regulation	≤2%
	No load loss	70mA
	Ripple & noise	240mVp-p
	Positive type	Terminal
Negative type	Terminal	
Environment	Working temperature	-40°C ~ +80°C
	Working humidity	10% ~ 90% RH
	Storage temperature	-40°C ~ +85°C
Function	Waterproof	IP67
	Over load protection	YES
	Over temperature protection	YES
	Low voltage protection	YES
Mechanical	Weight	≤ 2.3kg
	Size	220*127*63mm
Other	Shell material	Aluminum
	Packaging	Brown box

## 12V to 24V 50A DC-DC Boost Converter

### Design Features

- \* Design meeting by CE/RoHS
- \* Mount in almost any location
- \* Compact and light weight
- \* 100% full load burn-in test
- \* Over temperature protection
- \* 1 year limited warranty
- \* Advanced switch mode design
- \* Non-isolated between input & output
- \* Waterproof, Dust-proof, Shockproof
- \* Low voltage protection
- \* Over load protection

### Applications

- \* Industrial
- \* Electromotor
- \* Logging Vehicles
- \* Alternative Energy
- \* Telecommunications
- \* LED market etc.
- \* Boat & Yacht
- \* Golf Cart & Forklift



Model No.		WG-12S2450
Input	Rated voltage	12V
	Voltage range	10-16V
	Efficiency	93%
	Positive type	Terminal
	Negative type	Terminal
	Ignition wire (enable pin)	Optional
Output	Voltage	24V
	Current	0 ~ 50A
	Max. rated power	1200W
	Voltage regulation	≤1%
	Load regulation	≤2%
	No load loss	70mA
	Ripple & noise	300mVp-p
	Positive type	Terminal
Negative type	Terminal	
Environment	Working temperature	-40°C ~ +80°C
	Working humidity	10% ~ 90% RH
	Storage temperature	-40°C ~ +85°C
Function	Waterproof	IP67
	Over load protection	YES
	Over temperature protection	YES
	Low voltage protection	YES
Mechanical	Weight	≤ 3.1kg
	Size	300*127*63mm
Other	Shell material	Aluminum
	Packaging	Brown box

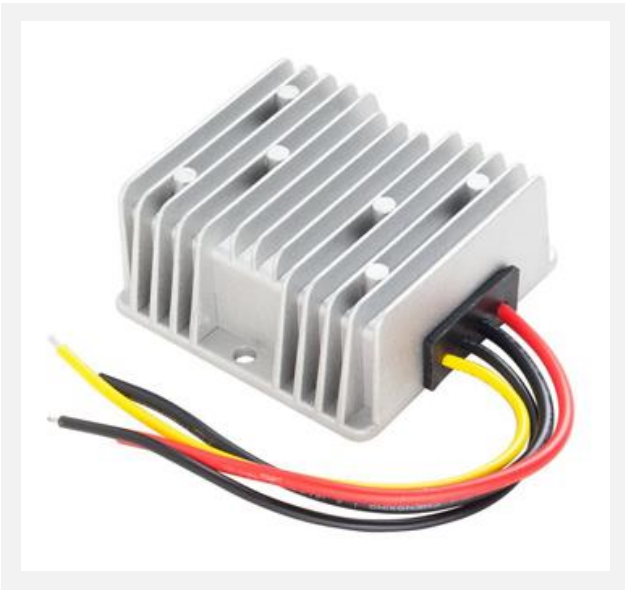
## 12V to 19V 5A 6A 10A DC-DC Boost Converter

### Design Features

- \* Design meeting by CE/RoHS
- \* Mount in almost any location
- \* Compact and light weight
- \* 100% full load burn-in test
- \* Over temperature protection
- \* 1 year limited warranty
- \* Advanced switch mode design
- \* Non-isolated between input & output
- \* Waterproof, Dust-proof, Shockproof
- \* Low voltage protection
- \* Over load protection

### Applications

- \* Industrial
- \* Electromotor
- \* Logging Vehicles
- \* Alternative Energy
- \* Telecommunications
- \* LED market etc.
- \* Boat & Yacht
- \* Golf Cart & Forklift



Model No.		WG-12S1905	WG-12S1906F	WG-12S1910
Input	Rated voltage	12V		
	Voltage range	10-19V		
	Efficiency	95%	96%	96%
	Positive cable length (red)	16-17cm		
	Negative cable length (black)	16-17cm		
Output	Voltage	19V		
	Current	0 ~ 5A	0 ~ 6A	0 ~ 10A
	Max. rated power	95W	114W	190W
	Voltage regulation	≤1%		
	Load regulation	≤2%		
	No load loss	20mA	50mA	50mA
	Ripple & noise	220mVp-p	220mVp-p	220mVp-p
	Positive cable length (yellow)	16-17cm		
	Negative cable length (black)	16-17cm		
Environment	Working temperature	-40°C ~ +80°C		
	Working humidity	10% ~ 90% RH		
	Storage temperature	-40°C ~ +85°C		
Function	Waterproof	IP67		
	Over load protection	YES		
	Over temperature protection	YES		
	Low voltage protection	YES		
Mechanical	Weight	≤ 300g		
	Size	74*74*32mm		
Other	Shell material	Die-cast aluminum		
	Packaging	White box		



## 12V to 19V 15A 20A DC-DC Boost Converter

### Design Features

- \* Design meeting by CE/RoHS
- \* Mount in almost any location
- \* Compact and light weight
- \* 100% full load burn-in test
- \* Over temperature protection
- \* 1 year limited warranty
- \* Advanced switch mode design
- \* Non-isolated between input & output
- \* Waterproof, Dust-proof, Shockproof
- \* Low voltage protection
- \* Over load protection

### Applications

- \* Industrial
- \* Electromotor
- \* Logging Vehicles
- \* Alternative Energy
- \* Telecommunications
- \* LED market etc.
- \* Boat & Yacht
- \* Golf Cart & Forklift



Model No.		WG-12S1915	WG-12S1920
Input	Rated voltage	12V	
	Voltage range	10-19V	
	Efficiency	96.6%	
	Positive cable length (red)	16-17cm	
	Negative cable length (black)	16-17cm	
Output	Voltage	19V	
	Current	0 ~ 15A	0 ~ 20A
	Max. rated power	285W	380W
	Voltage regulation	≤1%	
	Load regulation	≤2%	
	No load loss	46mA	
	Ripple & noise	248-400mVp-p	
	Positive cable length (white)	16-17cm	
	Negative cable length (black)	16-17cm	
Environment	Working temperature	-40°C ~ +80°C	
	Working humidity	10% ~ 90% RH	
	Storage temperature	-40°C ~ +85°C	
Function	Waterproof	IP67	
	Over load protection	YES	
	Over temperature protection	YES	
	Low voltage protection	YES	
Mechanical	Weight	≤ 550g	
	Size	100*80*39mm	
Other	Shell material	Die-cast aluminum	
	Packaging	White box	



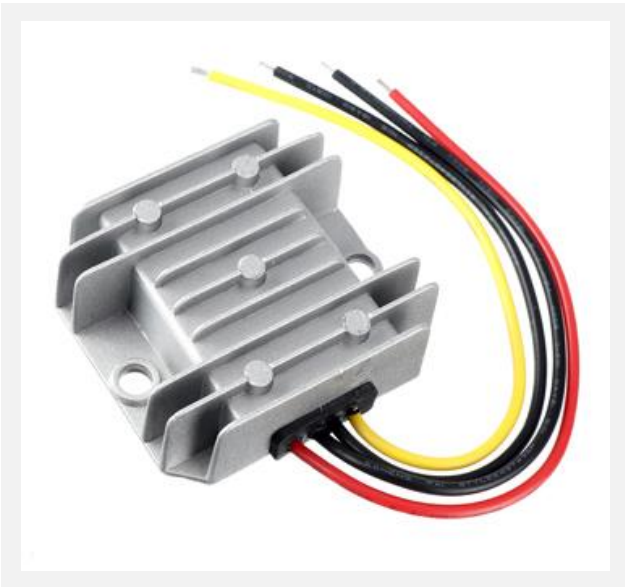
## 12V to 28V 3A DC-DC Boost Converter

### Design Features

- \* Design meeting by CE/RoHS
- \* Mount in almost any location
- \* Compact and light weight
- \* 100% full load burn-in test
- \* Over temperature protection
- \* 1 year limited warranty
- \* Advanced switch mode design
- \* Non-isolated between input & output
- \* Waterproof, Dust-proof, Shockproof
- \* Low voltage protection
- \* Over load protection

### Applications

- \* Industrial
- \* Electromotor
- \* Logging Vehicles
- \* Alternative Energy
- \* Telecommunications
- \* LED market etc.
- \* Boat & Yacht
- \* Golf Cart & Forklift



Model No.		WG-12S2803
Input	Rated voltage	12V
	Voltage range	10-16V
	Efficiency	95%
	Positive cable length (red)	16-17cm
	Negative cable length (black)	16-17cm
Output	Voltage	28V
	Current	0 ~ 3A
	Max. rated power	84W
	Voltage regulation	≤1%
	Load regulation	≤2%
	No load loss	51mA
	Ripple & noise	260mVp-p
	Positive cable length (yellow)	16-17cm
	Negative cable length (black)	16-17cm
Environment	Working temperature	-40°C ~ +80°C
	Working humidity	10% ~ 90% RH
	Storage temperature	-40°C ~ +85°C
Function	Waterproof	IP67
	Over load protection	YES
	Over temperature protection	YES
	Low voltage protection	YES
Mechanical	Weight	≤ 120g
	Size	64*57*22mm
Other	Shell material	Die-cast aluminum
	Packaging	White box

## 12V to 28V 5A 10A DC-DC Boost Converter

### Design Features

- \* Design meeting by CE/RoHS
- \* Mount in almost any location
- \* Compact and light weight
- \* 100% full load burn-in test
- \* Over temperature protection
- \* 1 year limited warranty
- \* Advanced switch mode design
- \* Non-isolated between input & output
- \* Waterproof, Dust-proof, Shockproof
- \* Low voltage protection
- \* Over load protection

### Applications

- \* Industrial
- \* Electromotor
- \* Logging Vehicles
- \* Alternative Energy
- \* Telecommunications
- \* LED market etc.
- \* Boat & Yacht
- \* Golf Cart & Forklift



Model No.		WG-12S2805	WG-12S2810
Input	Rated voltage	12V	
	Voltage range	10-16V	
	Efficiency	95%	94%
	Positive cable length (red)	16-17cm	
	Negative cable length (black)	16-17cm	
Output	Voltage	28V	
	Current	0 ~ 5A	0 ~ 10A
	Max. rated power	140W	280W
	Voltage regulation	≤1%	
	Load regulation	≤2%	
	No load loss	50mA	50mA
	Ripple & noise	160mVp-p	160mVp-p
	Positive cable length (yellow)	16-17cm	
Negative cable length (black)	16-17cm		
Environment	Working temperature	-40°C ~ +80°C	
	Working humidity	10% ~ 90% RH	
	Storage temperature	-40°C ~ +85°C	
Function	Waterproof	IP67	
	Over load protection	YES	
	Over temperature protection	YES	
	Low voltage protection	YES	
Mechanical	Weight	≤ 300g	
	Size	74*74*32mm	
Other	Shell material	Die-cast aluminum	
	Packaging	White box	

## 12V to 28V 15A DC-DC Boost Converter

### Design Features

- \* Design meeting by CE/RoHS
- \* Mount in almost any location
- \* Compact and light weight
- \* 100% full load burn-in test
- \* Over temperature protection
- \* 1 year limited warranty
- \* Advanced switch mode design
- \* Non-isolated between input & output
- \* Waterproof, Dust-proof, Shockproof
- \* Low voltage protection
- \* Over load protection

### Applications

- \* Industrial
- \* Electromotor
- \* Logging Vehicles
- \* Alternative Energy
- \* Telecommunications
- \* LED market etc.
- \* Boat & Yacht
- \* Golf Cart & Forklift



Model No.	WG-12S2815	
Input	Rated voltage	12V
	Voltage range	10-18V
	Efficiency	95%
	Positive cable length (red)	16-17cm
	Negative cable length (black)	16-17cm
Output	Voltage	28V
	Current	0 ~ 15A
	Max. rated power	420W
	Voltage regulation	≤1%
	Load regulation	≤2%
	No load loss	70mA
	Ripple & noise	200mVp-p
	Positive cable length (white)	16-17cm
Negative cable length (black)	16-17cm	
Environment	Working temperature	-40°C ~ +80°C
	Working humidity	10% ~ 90% RH
	Storage temperature	-40°C ~ +85°C
Function	Waterproof	IP67
	Over load protection	YES
	Over temperature protection	YES
	Low voltage protection	YES
Mechanical	Weight	≤ 550g
	Size	100*80*39mm
Other	Shell material	Die-cast aluminum
	Packaging	White box

## 12V to 28V 20A 30A DC-DC Boost Converter

### Design Features

- \* Design meeting by CE/RoHS
- \* Mount in almost any location
- \* Compact and light weight
- \* 100% full load burn-in test
- \* Over temperature protection
- \* 1 year limited warranty
- \* Advanced switch mode design
- \* Non-isolated between input & output
- \* Waterproof, Dust-proof, Shockproof
- \* Low voltage protection
- \* Over load protection

### Applications

- \* Industrial
- \* Electromotor
- \* Logging Vehicles
- \* Alternative Energy
- \* Telecommunications
- \* LED market etc.
- \* Boat & Yacht
- \* Golf Cart & Forklift



Model No.		WG-12S2820	WG-12S2830
Input	Rated voltage	12V	
	Voltage range	10-16V	
	Efficiency	96%	95%
	Positive type	Terminal	
	Negative type	Terminal	
	Ignition wire (enable pin)	Optional	
Output	Voltage	28V	
	Current	0 ~ 20A	0 ~ 30A
	Max. rated power	560W	840W
	Voltage regulation	≤1%	
	Load regulation	≤2%	
	No load loss	60mA	
	Ripple & noise	220mVp-p	
	Positive type	Terminal	
	Negative type	Terminal	
Environment	Working temperature	-40°C ~ +80°C	
	Working humidity	10% ~ 90% RH	
	Storage temperature	-40°C ~ +85°C	
Function	Waterproof	IP67	
	Over load protection	YES	
	Over temperature protection	YES	
	Low voltage protection	YES	
Mechanical	Weight	≤ 1.55kg	
	Size	150*127*63mm	
Other	Shell material	Aluminum	
	Packaging	Brown box	

## 12V to 28V 40A DC-DC Boost Converter

### Design Features

- \* Design meeting by CE/RoHS
- \* Mount in almost any location
- \* Compact and light weight
- \* 100% full load burn-in test
- \* Over temperature protection
- \* 1 year limited warranty
- \* Advanced switch mode design
- \* Non-isolated between input & output
- \* Waterproof, Dust-proof, Shockproof
- \* Low voltage protection
- \* Over load protection

### Applications

- \* Industrial
- \* Electromotor
- \* Logging Vehicles
- \* Alternative Energy
- \* Telecommunications
- \* LED market etc.
- \* Boat & Yacht
- \* Golf Cart & Forklift



Model No.	WG-12S2840	
Input	Rated voltage	12V
	Voltage range	10-16V
	Efficiency	94%
	Positive type	Terminal
	Negative type	Terminal
	Ignition wire (enable pin)	Optional
Output	Voltage	28V
	Current	0 ~ 40A
	Max. rated power	1120W
	Voltage regulation	≤1%
	Load regulation	≤2%
	No load loss	70mA
	Ripple & noise	240mVp-p
	Positive type	Terminal
Negative type	Terminal	
Environment	Working temperature	-40°C ~ +80°C
	Working humidity	10% ~ 90% RH
	Storage temperature	-40°C ~ +85°C
Function	Waterproof	IP67
	Over load protection	YES
	Over temperature protection	YES
	Low voltage protection	YES
Mechanical	Weight	≤ 2.3kg
	Size	220*127*63mm
Other	Shell material	Aluminum
	Packaging	Brown box



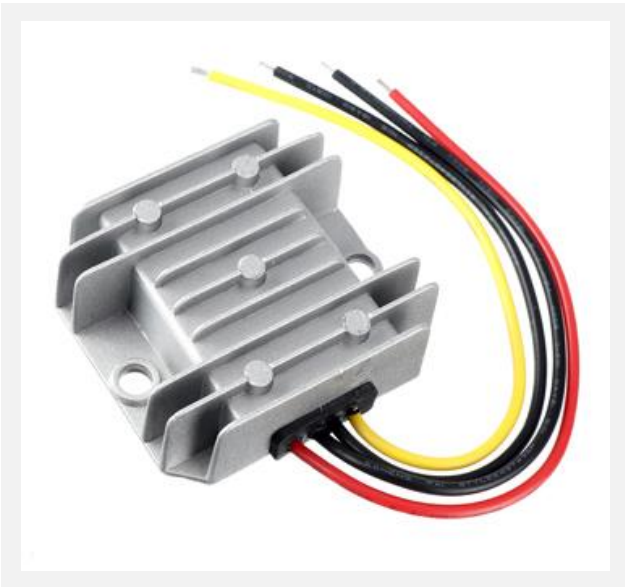
## 12V to 36V 1A 2A DC-DC Boost Converter

### Design Features

- \* Design meeting by CE/RoHS
- \* Mount in almost any location
- \* Compact and light weight
- \* 100% full load burn-in test
- \* Over temperature protection
- \* 1 year limited warranty
- \* Advanced switch mode design
- \* Non-isolated between input & output
- \* Waterproof, Dust-proof, Shockproof
- \* Low voltage protection
- \* Over load protection

### Applications

- \* Industrial
- \* Electromotor
- \* Logging Vehicles
- \* Alternative Energy
- \* Telecommunications
- \* LED market etc.
- \* Boat & Yacht
- \* Golf Cart & Forklift



Model No.		WG-12S3601	WG-12S3602
Input	Rated voltage	12V	
	Voltage range	10-16V	
	Efficiency	94%	
	Positive cable length (red)	16-17cm	
	Negative cable length (black)	16-17cm	
Output	Voltage	36V	
	Current	0 ~ 1A	0 ~ 2A
	Max. rated power	36W	72W
	Voltage regulation	≤1%	
	Load regulation	≤2%	
	No load loss	50mA	
	Ripple & noise	160mVp-p	
	Positive cable length (yellow)	16-17cm	
	Negative cable length (black)	16-17cm	
Environment	Working temperature	-40°C ~ +80°C	
	Working humidity	10% ~ 90% RH	
	Storage temperature	-40°C ~ +85°C	
Function	Waterproof	IP67	
	Over load protection	YES	
	Over temperature protection	YES	
	Low voltage protection	YES	
Mechanical	Weight	≤ 120g	
	Size	64*57*22mm	
Other	Shell material	Die-cast aluminum	
	Packaging	White box	

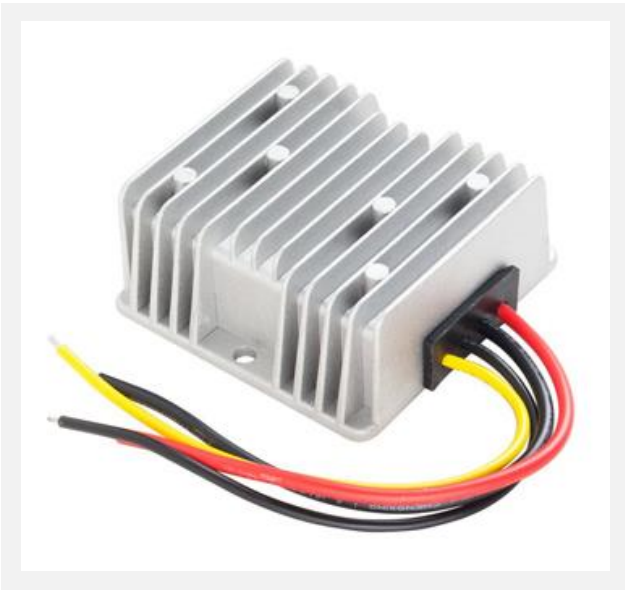
## 12V to 36V 5A 6A DC-DC Boost Converter

### Design Features

- \* Design meeting by CE/RoHS
- \* Mount in almost any location
- \* Compact and light weight
- \* 100% full load burn-in test
- \* Over temperature protection
- \* 1 year limited warranty
- \* Advanced switch mode design
- \* Non-isolated between input & output
- \* Waterproof, Dust-proof, Shockproof
- \* Low voltage protection
- \* Over load protection

### Applications

- \* Industrial
- \* Electromotor
- \* Logging Vehicles
- \* Alternative Energy
- \* Telecommunications
- \* LED market etc.
- \* Boat & Yacht
- \* Golf Cart & Forklift



Model No.		WG-12S3605	WG-12S3606
Input	Rated voltage	12V	
	Voltage range	10-16V	
	Efficiency	94%	94%
	Positive cable length (red)	16-17cm	
	Negative cable length (black)	16-17cm	
Output	Voltage	36V	
	Current	0 ~ 5A	0 ~ 6A
	Max. rated power	180W	216W
	Voltage regulation	≤1%	
	Load regulation	≤2%	
	No load loss	70mA	70mA
	Ripple & noise	180mVp-p	180mVp-p
	Positive cable length (yellow)	16-17cm	
	Negative cable length (black)	16-17cm	
Environment	Working temperature	-40°C ~ +80°C	
	Working humidity	10% ~ 90% RH	
	Storage temperature	-40°C ~ +85°C	
Function	Waterproof	IP67	
	Over load protection	YES	
	Over temperature protection	YES	
	Low voltage protection	YES	
Mechanical	Weight	≤ 300g	
	Size	74*74*32mm	
Other	Shell material	Die-cast aluminum	
	Packaging	White box	

## 12V to 36V 10A DC-DC Boost Converter

### Design Features

- \* Design meeting by CE/RoHS
- \* Mount in almost any location
- \* Compact and light weight
- \* 100% full load burn-in test
- \* Over temperature protection
- \* 1 year limited warranty
- \* Advanced switch mode design
- \* Non-isolated between input & output
- \* Waterproof, Dust-proof, Shockproof
- \* Low voltage protection
- \* Over load protection

### Applications

- \* Industrial
- \* Electromotor
- \* Logging Vehicles
- \* Alternative Energy
- \* Telecommunications
- \* LED market etc.
- \* Boat & Yacht
- \* Golf Cart & Forklift



Model No.	WG-12S3610	
Input	Rated voltage	12V
	Voltage range	10-25V
	Efficiency	94%
	Positive cable length (red)	16-17cm
	Negative cable length (black)	16-17cm
Output	Voltage	36V
	Current	0 ~ 10A
	Max. rated power	360W
	Voltage regulation	≤1%
	Load regulation	≤2%
	No load loss	70mA
	Ripple & noise	200mVp-p
	Positive cable length (white)	16-17cm
	Negative cable length (black)	16-17cm
Environment	Working temperature	-40°C ~ +80°C
	Working humidity	10% ~ 90% RH
	Storage temperature	-40°C ~ +85°C
Function	Waterproof	IP67
	Over load protection	YES
	Over temperature protection	YES
	Low voltage protection	YES
Mechanical	Weight	≤ 550g
	Size	100*80*39mm
Other	Shell material	Die-cast aluminum
	Packaging	White box

## 12V to 36V 15A 20A DC-DC Boost Converter

### Design Features

- \* Design meeting by CE/RoHS
- \* Mount in almost any location
- \* Compact and light weight
- \* 100% full load burn-in test
- \* Over temperature protection
- \* 1 year limited warranty
- \* Advanced switch mode design
- \* Non-isolated between input & output
- \* Waterproof, Dust-proof, Shockproof
- \* Low voltage protection
- \* Over load protection

### Applications

- \* Industrial
- \* Electromotor
- \* Logging Vehicles
- \* Alternative Energy
- \* Telecommunications
- \* LED market etc.
- \* Boat & Yacht
- \* Golf Cart & Forklift



Model No.		WG-12S3615	WG-12S3620
Input	Rated voltage	12V	
	Voltage range	10-25V	
	Efficiency	96%	95%
	Positive type	Terminal	
	Negative type	Terminal	
	Ignition wire (enable pin)	Optional	
Output	Voltage	36V	
	Current	0 ~ 15A	0 ~ 20A
	Max. rated power	540W	720W
	Voltage regulation	≤1%	
	Load regulation	≤2%	
	No load loss	70mA	
	Ripple & noise	200mVp-p	
	Positive type	Terminal	
	Negative type	Terminal	
Environment	Working temperature	-40°C ~ +80°C	
	Working humidity	10% ~ 90% RH	
	Storage temperature	-40°C ~ +85°C	
Function	Waterproof	IP67	
	Over load protection	YES	
	Over temperature protection	YES	
	Low voltage protection	YES	
Mechanical	Weight	≤ 1.55kg	
	Size	150*127*63mm	
Other	Shell material	Aluminum	
	Packaging	Brown box	

## 12V to 36V 30A DC-DC Boost Converter

### Design Features

- \* Design meeting by CE/RoHS
- \* Mount in almost any location
- \* Compact and light weight
- \* 100% full load burn-in test
- \* Over temperature protection
- \* 1 year limited warranty
- \* Advanced switch mode design
- \* Non-isolated between input & output
- \* Waterproof, Dust-proof, Shockproof
- \* Low voltage protection
- \* Over load protection

### Applications

- \* Industrial
- \* Electromotor
- \* Logging Vehicles
- \* Alternative Energy
- \* Telecommunications
- \* LED market etc.
- \* Boat & Yacht
- \* Golf Cart & Forklift



Model No.	WG-12S3630	
Input	Rated voltage	12V
	Voltage range	10-25V
	Efficiency	96%
	Positive type	Terminal
	Negative type	Terminal
	Ignition wire (enable pin)	Optional
Output	Voltage	36V
	Current	0 ~ 30A
	Max. rated power	1080W
	Voltage regulation	≤1%
	Load regulation	≤2%
	No load loss	70mA
	Ripple & noise	200mVp-p
	Positive type	Terminal
	Negative type	Terminal
Environment	Working temperature	-40°C ~ +80°C
	Working humidity	10% ~ 90% RH
	Storage temperature	-40°C ~ +85°C
Function	Waterproof	IP67
	Over load protection	YES
	Over temperature protection	YES
	Low voltage protection	YES
Mechanical	Weight	≤ 2.3kg
	Size	220*127*63mm
Other	Shell material	Aluminum
	Packaging	Brown box



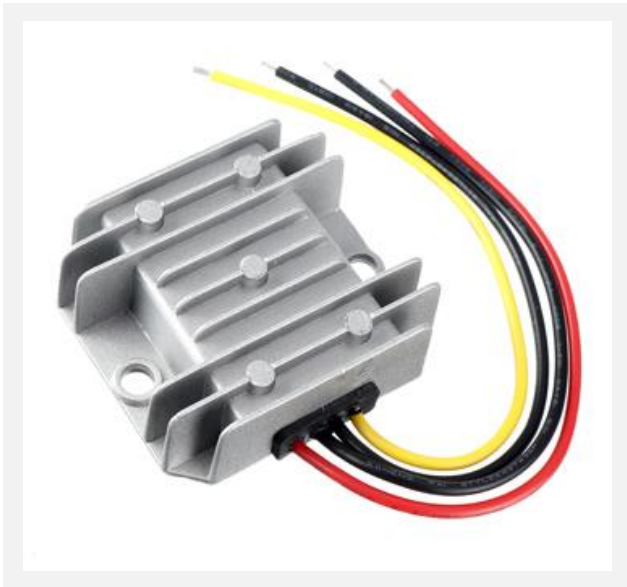
## 12V to 48V 1A 2A DC-DC Boost Converter

### Design Features

- \* Design meeting by CE/RoHS
- \* Mount in almost any location
- \* Compact and light weight
- \* 100% full load burn-in test
- \* Over temperature protection
- \* 1 year limited warranty
- \* Advanced switch mode design
- \* Non-isolated between input & output
- \* Waterproof, Dust-proof, Shockproof
- \* Low voltage protection
- \* Over load protection

### Applications

- \* Industrial
- \* Electromotor
- \* Logging Vehicles
- \* Alternative Energy
- \* Telecommunications
- \* LED market etc.
- \* Boat & Yacht
- \* Golf Cart & Forklift



Model No.		WG-12S4801	WG-12S4802
Input	Rated voltage	12V	
	Voltage range	10-23V	
	Efficiency	94%	
	Positive cable length (red)	16-17cm	
	Negative cable length (black)	16-17cm	
Output	Voltage	48V	
	Current	0 ~ 1A	0 ~ 2A
	Max. rated power	48W	96W
	Voltage regulation	≤1%	
	Load regulation	≤2%	
	No load loss	40mA	
	Ripple & noise	440mVp-p	
	Positive cable length (yellow)	16-17cm	
	Negative cable length (black)	16-17cm	
Environment	Working temperature	-40°C ~ +80°C	
	Working humidity	10% ~ 90% RH	
	Storage temperature	-40°C ~ +85°C	
Function	Waterproof	IP67	
	Over load protection	YES	
	Over temperature protection	YES	
	Low voltage protection	YES	
Mechanical	Weight	≤ 120g	
	Size	64*57*22mm	
Other	Shell material	Die-cast aluminum	
	Packaging	White box	

## 12V to 48V 3A 5A DC-DC Boost Converter

### Design Features

- \* Design meeting by CE/RoHS
- \* Mount in almost any location
- \* Compact and light weight
- \* 100% full load burn-in test
- \* Over temperature protection
- \* 1 year limited warranty
- \* Advanced switch mode design
- \* Non-isolated between input & output
- \* Waterproof, Dust-proof, Shockproof
- \* Low voltage protection
- \* Over load protection

### Applications

- \* Industrial
- \* Electromotor
- \* Logging Vehicles
- \* Alternative Energy
- \* Telecommunications
- \* LED market etc.
- \* Boat & Yacht
- \* Golf Cart & Forklift



Model No.		WG-12S4803	WG-12S4805
Input	Rated voltage	12V	
	Voltage range	10-25V	
	Efficiency	92%	95%
	Positive cable length (red)	16-17cm	
	Negative cable length (black)	16-17cm	
Output	Voltage	48V	
	Current	0 ~ 3A	0 ~ 5A
	Max. rated power	144W	240W
	Voltage regulation	≤1%	
	Load regulation	≤2%	
	No load loss	40mA	40mA
	Ripple & noise	210mVp-p	210mVp-p
	Positive cable length (yellow)	16-17cm	
	Negative cable length (black)	16-17cm	
Environment	Working temperature	-40°C ~ +80°C	
	Working humidity	10% ~ 90% RH	
	Storage temperature	-40°C ~ +85°C	
Function	Waterproof	IP67	
	Over load protection	YES	
	Over temperature protection	YES	
	Low voltage protection	YES	
Mechanical	Weight	≤ 300g	
	Size	74*74*32mm	
Other	Shell material	Die-cast aluminum	
	Packaging	White box	

## 12V to 48V 8A DC-DC Boost Converter

### Design Features

- \* Design meeting by CE/RoHS
- \* Mount in almost any location
- \* Compact and light weight
- \* 100% full load burn-in test
- \* Over temperature protection
- \* 1 year limited warranty
- \* Advanced switch mode design
- \* Non-isolated between input & output
- \* Waterproof, Dust-proof, Shockproof
- \* Low voltage protection
- \* Over load protection

### Applications

- \* Industrial
- \* Electromotor
- \* Logging Vehicles
- \* Alternative Energy
- \* Telecommunications
- \* LED market etc.
- \* Boat & Yacht
- \* Golf Cart & Forklift



Model No.	WG-12S4808	
Input	Rated voltage	12V
	Voltage range	10-30V
	Efficiency	95%
	Positive cable length (red)	16-17cm
	Negative cable length (black)	16-17cm
Output	Voltage	48V
	Current	0 ~ 8A
	Max. rated power	384W
	Voltage regulation	≤1%
	Load regulation	≤2%
	No load loss	60mA
	Ripple & noise	180mVp-p
	Positive cable length (white)	16-17cm
	Negative cable length (black)	16-17cm
Environment	Working temperature	-40°C ~ +80°C
	Working humidity	10% ~ 90% RH
	Storage temperature	-40°C ~ +85°C
Function	Waterproof	IP67
	Over load protection	YES
	Over temperature protection	YES
	Low voltage protection	YES
Mechanical	Weight	≤ 550g
	Size	100*80*39mm
Other	Shell material	Die-cast aluminum
	Packaging	White box

## 12V to 48V 12.5A 20A DC-DC Boost Converter

### Design Features

- \* Design meeting by CE/RoHS
- \* Mount in almost any location
- \* Compact and light weight
- \* 100% full load burn-in test
- \* Over temperature protection
- \* 2 years limited warranty
- \* Advanced switch mode design
- \* Non-isolated between input & output
- \* Waterproof, Dust-proof, Shockproof
- \* Low voltage protection
- \* Over load protection

### Applications

- \* Industrial
- \* Electromotor
- \* Logging Vehicles
- \* Alternative Energy
- \* Telecommunications
- \* LED market etc.
- \* Boat & Yacht
- \* Golf Cart & Forklift



Model No.		WG-12S4812R5	WG-12S4820M
Input	Rated voltage	12V	
	Voltage range	11-20V	10-20V
	Efficiency	95.3%	96.8%
	Positive type	Terminal	
	Negative type	Terminal	
	Ignition wire (enable pin)	Optional	
Output	Voltage	48V	
	Current	0 ~ 12.5A	0 ~ 20A
	Max. rated power	600W	960W
	Voltage regulation	≤1%	
	Load regulation	≤2%	
	No load loss	30mA	120mA
	Ripple & noise	290-950mVp-p	452-700mVp-p
	Positive type	Terminal	
Negative type	Terminal		
Environment	Working temperature	-40°C ~ +80°C	
	Working humidity	10% ~ 90% RH	
	Storage temperature	-40°C ~ +85°C	
Function	Waterproof	IP67	
	Short circuit protection	YES	
	Over load protection	YES	
	Over temperature protection	YES	
	Low voltage protection	YES	
Mechanical	Weight	≤ 1.2kg	
	Size	140*120*42.5mm	
Other	Shell material	Die-cast aluminum	
	Packaging	White box	

## 12V to 48V 15A DC-DC Boost Converter

### Design Features

- \* Design meeting by CE/RoHS
- \* Mount in almost any location
- \* Compact and light weight
- \* 100% full load burn-in test
- \* Over temperature protection
- \* 1 year limited warranty
- \* Advanced switch mode design
- \* Non-isolated between input & output
- \* Waterproof, Dust-proof, Shockproof
- \* Low voltage protection
- \* Over load protection

### Applications

- \* Industrial
- \* Electromotor
- \* Logging Vehicles
- \* Alternative Energy
- \* Telecommunications
- \* LED market etc.
- \* Boat & Yacht
- \* Golf Cart & Forklift



Model No.	WG-12S4815	
Input	Rated voltage	12V
	Voltage range	10-25V
	Efficiency	96%
	Positive type	Terminal
	Negative type	Terminal
	Ignition wire (enable pin)	Optional
Output	Voltage	48V
	Current	0 ~ 15A
	Max. rated power	720W
	Voltage regulation	≤1%
	Load regulation	≤2%
	No load loss	70mA
	Ripple & noise	200mVp-p
	Positive type	Terminal
Negative type	Terminal	
Environment	Working temperature	-40°C ~ +80°C
	Working humidity	10% ~ 90% RH
	Storage temperature	-40°C ~ +85°C
Function	Waterproof	IP67
	Over load protection	YES
	Over temperature protection	YES
	Low voltage protection	YES
Mechanical	Weight	≤ 1.55kg
	Size	150*127*63mm
Other	Shell material	Aluminum
	Packaging	Brown box



## 12V to 48V 20A DC-DC Boost Converter

### Design Features

- \* Design meeting by CE/RoHS
- \* Mount in almost any location
- \* Compact and light weight
- \* 100% full load burn-in test
- \* Over temperature protection
- \* 1 year limited warranty
- \* Advanced switch mode design
- \* Non-isolated between input & output
- \* Waterproof, Dust-proof, Shockproof
- \* Low voltage protection
- \* Over load protection

### Applications

- \* Industrial
- \* Electromotor
- \* Logging Vehicles
- \* Alternative Energy
- \* Telecommunications
- \* LED market etc.
- \* Boat & Yacht
- \* Golf Cart & Forklift



Model No.	WG-12S4820	
Input	Rated voltage	12V
	Voltage range	10-25V
	Efficiency	96%
	Positive type	Terminal
	Negative type	Terminal
	Ignition wire (enable pin)	Optional
Output	Voltage	48V
	Current	0 ~ 20A
	Max. rated power	960W
	Voltage regulation	≤1%
	Load regulation	≤2%
	No load loss	200mA
	Ripple & noise	360mVp-p
	Positive type	Terminal
Negative type	Terminal	
Environment	Working temperature	-40°C ~ +80°C
	Working humidity	10% ~ 90% RH
	Storage temperature	-40°C ~ +85°C
Function	Waterproof	IP67
	Over load protection	YES
	Over temperature protection	YES
	Low voltage protection	YES
Mechanical	Weight	≤ 2.3kg
	Size	220*127*63mm
Other	Shell material	Aluminum
	Packaging	Brown box

## 24V to 48V 3A 5A DC-DC Boost Converter

### Design Features

- \* Design meeting by CE/RoHS
- \* Mount in almost any location
- \* Compact and light weight
- \* 100% full load burn-in test
- \* Over temperature protection
- \* 1 year limited warranty
- \* Advanced switch mode design
- \* Non-isolated between input & output
- \* Waterproof, Dust-proof, Shockproof
- \* Low voltage protection
- \* Over load protection

### Applications

- \* Industrial
- \* Electromotor
- \* Logging Vehicles
- \* Alternative Energy
- \* Telecommunications
- \* LED market etc.
- \* Boat & Yacht
- \* Golf Cart & Forklift



Model No.		WG-24S4803	WG-24S4805
Input	Rated voltage	24V	
	Voltage range	18-35V	
	Efficiency	95%	94%
	Positive cable length (red)	16-17cm	
	Negative cable length (black)	16-17cm	
Output	Voltage	48V	
	Current	0 ~ 3A	0 ~ 5A
	Max. rated power	144W	240W
	Voltage regulation	≤1%	
	Load regulation	≤2%	
	No load loss	40mA	40mA
	Ripple & noise	240mVp-p	240mVp-p
	Positive cable length (yellow)	16-17cm	
	Negative cable length (black)	16-17cm	
Environment	Working temperature	-40°C ~ +80°C	
	Working humidity	10% ~ 90% RH	
	Storage temperature	-40°C ~ +85°C	
Function	Waterproof	IP67	
	Over load protection	YES	
	Over temperature protection	YES	
	Low voltage protection	YES	
Mechanical	Weight	≤ 300g	
	Size	74*74*32mm	
Other	Shell material	Die-cast aluminum	
	Packaging	White box	

## 24V to 48V 10A 15A DC-DC Boost Converter

### Design Features

- \* Design meeting by CE/RoHS
- \* Mount in almost any location
- \* Compact and light weight
- \* 100% full load burn-in test
- \* Over temperature protection
- \* 1 year limited warranty
- \* Advanced switch mode design
- \* Non-isolated between input & output
- \* Waterproof, Dust-proof, Shockproof
- \* Low voltage protection
- \* Over load protection

### Applications

- \* Industrial
- \* Electromotor
- \* Logging Vehicles
- \* Alternative Energy
- \* Telecommunications
- \* LED market etc.
- \* Boat & Yacht
- \* Golf Cart & Forklift



Model No.		WG-24S4810	WG-24S4815
Input	Rated voltage	24V	
	Voltage range	18-35V	
	Efficiency	97%	96%
	Positive cable length (red)	16-17cm	
	Negative cable length (black)	16-17cm	
Output	Voltage	48V	
	Current	0 ~ 10A	0 ~ 15A
	Max. rated power	480W	720W
	Voltage regulation	≤1%	
	Load regulation	≤2%	
	No load loss	70mA	
	Ripple & noise	170mVp-p	
	Positive cable length (white)	16-17cm	
	Negative cable length (black)	16-17cm	
Environment	Working temperature	-40°C ~ +80°C	
	Working humidity	10% ~ 90% RH	
	Storage temperature	-40°C ~ +85°C	
Function	Waterproof	IP67	
	Over load protection	YES	
	Over temperature protection	YES	
	Low voltage protection	YES	
Mechanical	Weight	≤ 550g	
	Size	100*80*39mm	
Other	Shell material	Die-cast aluminum	
	Packaging	White box	

## 24V to 48V 20A 32A DC-DC Boost Converter

### Design Features

- \* Design meeting by CE/RoHS
- \* Mount in almost any location
- \* Compact and light weight
- \* 100% full load burn-in test
- \* Over temperature protection
- \* 1 year limited warranty
- \* Advanced switch mode design
- \* Non-isolated between input & output
- \* Waterproof, Dust-proof, Shockproof
- \* Low voltage protection
- \* Over load protection

### Applications

- \* Industrial
- \* Electromotor
- \* Logging Vehicles
- \* Alternative Energy
- \* Telecommunications
- \* LED market etc.
- \* Boat & Yacht
- \* Golf Cart & Forklift



Model No.		WG-24S4820	WG-24S4832
Input	Rated voltage	24V	
	Voltage range	20-35V	
	Efficiency	97%	96%
	Positive type	Terminal	
	Negative type	Terminal	
	Ignition wire (enable pin)	Optional	
Output	Voltage	48V	
	Current	0 ~ 20A	0 ~ 32A
	Max. rated power	960W	1500W
	Voltage regulation	≤1%	
	Load regulation	≤2%	
	No load loss	60mA	
	Ripple & noise	280mVp-p	
	Positive type	Terminal	
Negative type	Terminal		
Environment	Working temperature	-40°C ~ +80°C	
	Working humidity	10% ~ 90% RH	
	Storage temperature	-40°C ~ +85°C	
Function	Waterproof	IP67	
	Over load protection	YES	
	Over temperature protection	YES	
	Low voltage protection	YES	
Mechanical	Weight	≤ 1.55kg	
	Size	150*127*63mm	
Other	Shell material	Aluminum	
	Packaging	Brown box	

## 24V to 48V 42A DC-DC Boost Converter

### Design Features

- \* Design meeting by CE/RoHS
- \* Mount in almost any location
- \* Compact and light weight
- \* 100% full load burn-in test
- \* Over temperature protection
- \* 1 year limited warranty
- \* Advanced switch mode design
- \* Non-isolated between input & output
- \* Waterproof, Dust-proof, Shockproof
- \* Low voltage protection
- \* Over load protection

### Applications

- \* Industrial
- \* Electromotor
- \* Logging Vehicles
- \* Alternative Energy
- \* Telecommunications
- \* LED market etc.
- \* Boat & Yacht
- \* Golf Cart & Forklift



Model No.		WG-24S4842
Input	Rated voltage	24V
	Voltage range	20-35V
	Efficiency	96%
	Positive type	Terminal
	Negative type	Terminal
	Ignition wire (enable pin)	Optional
Output	Voltage	48V
	Current	0 ~ 42A
	Max. rated power	2000W
	Voltage regulation	≤1%
	Load regulation	≤2%
	No load loss	70mA
	Ripple & noise	200mVp-p
	Positive type	Terminal
Negative type	Terminal	
Environment	Working temperature	-40°C ~ +80°C
	Working humidity	10% ~ 90% RH
	Storage temperature	-40°C ~ +85°C
Function	Waterproof	IP67
	Over load protection	YES
	Over temperature protection	YES
	Low voltage protection	YES
Mechanical	Weight	≤ 2.3kg
	Size	220*127*63mm
Other	Shell material	Aluminum
	Packaging	Brown box



## DC to DC Waterproof Battery Charger

### Design Features

- \* Design meeting by CE/RoHS
- \* Non-isolated between input & output
- \* Mount in almost any location
- \* Compact and light weight
- \* Imported capacitors, high reliability
- \* Waterproof, Dust-proof, Shockproof
- \* Over voltage protection
- \* Low voltage protection
- \* Over temperature protection
- \* Over load protection
- \* Short-circuit protection
- \* 2 years limited warranty

### Applications

- \* Industrial
- \* Alternative Energy
- \* Boat & Yacht
- \* EV/E-scooter
- \* Dual-battery System
- \* Golf Cart & Forklift
- \* Logging Vehicles
- \* Lithium/AGM batteries etc.



Model No.		WG-12C400L	WG-24C400L	WG-36C400L
Input	Rated voltage	12V/24V		
	Voltage range	10-36V		
	Efficiency	96%		
	Positive cable length (red)	45cm, w./ standard rings M8/M10		
	Negative cable length (black)	45cm, w./ standard rings M8/M10		
	Ignition wire (EN)	Optional		
Output	Voltage	14.6V	29.2V	43.8V
	Charging current	30A	15A	10A
	Power	438W		
	Voltage regulation	≤1%		
	Load regulation	≤2%		
	Ripple & noise	300mVp-p	470mVp-p	580mVp-p
	Positive cable length (white)	45cm, w./ standard rings M8/M10		
	Negative cable length (black)	45cm, w./ standard rings M8/M10		
Environment	Working temperature	-35°C ~ +80°C		
	Working humidity	10% ~ 90% RH		
	Storage temperature	-40°C ~ +100°C		
Function	Waterproof	IP65		
	Over current protection	YES		
	Low voltage protection	YES		
	Over voltage protection	YES		
	Short-circuit protection	YES		
	Over temperature protection	YES		
Mechanical	Weight	≤ 1.1kg		
	Size	200*77*30mm		
Other	Shell material	Die-cast aluminum		
	Packaging	Brown box		

## DC to DC Waterproof Battery Charger

### Design Features

- \* Design meeting by CE/RoHS
- \* Non-isolated between input & output
- \* Mount in almost any location
- \* Compact and light weight
- \* Imported capacitors, high reliability
- \* Waterproof, Dust-proof, Shockproof
- \* Over voltage protection
- \* Low voltage protection
- \* Over temperature protection
- \* Over load protection
- \* Short-circuit protection
- \* 2 years limited warranty

### Applications

- \* Industrial
- \* Alternative Energy
- \* Boat & Yacht
- \* EV/E-scooter
- \* Dual-battery System
- \* Golf Cart & Forklift
- \* Logging Vehicles
- \* Lithium/AGM batteries etc.



Model No.		WG-126C20M	WG-146C20M	WG-168C15M
Input	Rated voltage	12V/24V		
	Voltage range	10-36V		
	Efficiency	96%		
	Positive type	Terminal		
	Negative type	Terminal		
	Ignition wire (EN)	Optional		
Output	Voltage	12.6V	14.6V	16.8V
	Charging current	20A	20A	15A
	Power	252W	292W	252W
	Voltage regulation	≤1%		
	Load regulation	≤2%		
	Ripple & noise	150mVp-p		
	Positive cable length (white)	Terminal		
	Negative cable length (black)	Terminal		
Environment	Working temperature	-40°C ~ +80°C		
	Working humidity	10% ~ 90% RH		
	Storage temperature	-40°C ~ +100°C		
Function	Waterproof	IP67		
	Over current protection	YES		
	Low voltage protection	YES		
	Over voltage protection	YES		
	Short-circuit protection	YES		
	Over temperature protection	YES		
Mechanical	Weight	≤ 580g		
	Size	100*80*36mm		
Other	Shell material	Die-cast aluminum		
	Packaging	White box		

## DC to DC Waterproof Battery Charger

### Design Features

- \* Design meeting by CE/RoHS
- \* Non-isolated between input & output
- \* Mount in almost any location
- \* Compact and light weight
- \* Imported capacitors, high reliability
- \* Waterproof, Dust-proof, Shockproof
- \* Over load protection
- \* Low voltage protection
- \* Over temperature protection
- \* Short-circuit protection
- \* 2 years limited warranty

### Applications

- \* Industrial
- \* Alternative Energy
- \* Boat & Yacht
- \* EV/E-scooter
- \* Dual-battery System
- \* Golf Cart & Forklift
- \* Logging Vehicles
- \* Lithium/AGM batteries etc.



Model No.	WG-48C1220M	WG-72C1220M	
Battery type	Lifepo4		
LED light display	<b>RED:</b> battery is charging; <b>GREEN:</b> fully charged.		
Input	Rated voltage	24V/36V/48V (battery)	24V/36V/48V/60V/72V (battery)
	Voltage range	18-60V	18-90V
	Efficiency	96.7%	96%
	Positive type	Terminal	
	Negative type	Terminal	
	Ignition wire (EN)	Optional	
	No load current	59mA (Vin=48VDC)	13mA (Vin=72VDC)
Output	Charging voltage	14.6V	
	Charging current	20A	
	Power	292W	
	Ripple & noise	80-260mVp-p	
	Positive cable length (white)	Terminal	
	Negative cable length (black)	Terminal	
Environment	Working temperature	-40°C ~ +55°C	
	Working humidity	10% ~ 90% RH	
	Storage temperature	-40°C ~ +100°C	
Function	Waterproof	IP65	
	Over current protection	YES	
	Low voltage protection	YES	
	Short-circuit protection	YES	
	Over temperature protection	YES	
Mechanical	Weight	≤ 580g	
	Size	100*80*36mm	
Other	Shell material	Die-cast aluminum	
	Packaging	White box	



## DC to DC Waterproof Battery Charger

### Design Features

- \* Design meeting by CE/RoHS
- \* Non-isolated between input & output
- \* Mount in almost any location
- \* Compact and light weight
- \* Imported capacitors, high reliability
- \* Waterproof, Dust-proof, Shockproof
- \* Over load protection
- \* Low voltage protection
- \* Over temperature protection
- \* Short-circuit protection
- \* 2 years limited warranty

### Applications

- \* Industrial
- \* Alternative Energy
- \* Boat & Yacht
- \* EV/E-scooter
- \* Dual-battery System
- \* Golf Cart & Forklift
- \* Logging Vehicles
- \* Lithium/AGM batteries etc.

Model No.		WG-48C1240M	WG-12C4810M
Battery type		Lifepo4	
LED light display		RED: battery is charging; GREEN: fully charged.	
Input	Rated voltage	24V/36V/48V (battery)	24V/36V/48V/60V/72V (battery)
	Voltage range	18-60V	10-30V
	Efficiency	96.2%	94.5%
	Positive type	Terminal	
	Negative type	Terminal	
	Ignition wire (EN)	Optional	
	No load current	88mA (Vin=48VDC)	72mA (Vin=12VDC)
Output	Charging voltage	14.6V	58.4V
	Charging current	40A	10A
	Power	580W	584W
	Ripple & noise	100-350mVp-p	100-500mVp-p
	Positive cable length (white)	Terminal	
	Negative cable length (black)	Terminal	
Environment	Working temperature	-40°C ~ +55°C	
	Working humidity	10% ~ 90% RH	
	Storage temperature	-40°C ~ +100°C	
Function	Waterproof	IP65	
	Over current protection	YES	
	Low voltage protection	YES	
	Short-circuit protection	YES	
	Over temperature protection	YES	
Mechanical	Weight	≤ 1.2kg	
	Size	140*120*42.5mm	
Other	Shell material	Die-cast aluminum	
	Packaging	White box	



## 300W AC to DC Waterproof Battery Charger

### Design Features

- \* Design meeting by CE/RoHS/UL
- \* Heavy duty design, Soft start
- \* Imported capacitors, high reliability
- \* Over voltage protection
- \* Over temperature protection
- \* Cooling by free air convection
- \* Isolated between input & output
- \* 100% burn-in test, high reliability
- \* Waterproof, Dust-proof, Shockproof
- \* Short-circuit protection
- \* Over current protection
- \* 1 year limited warranty

### Applications

- \* Industrial
- \* EV/E-scooter
- \* Logging Vehicles
- \* Alternative Energy
- \* Dual-battery System
- \* Lithium/AGM batteries etc.
- \* Boat & Yacht
- \* Golf Cart & Forklift



Model No.		WG-12C300S	WG-24C300S	WG-36C300S	WG-48C300S
Input	Rated voltage	110V/230V AC			
	Voltage range	90-265V AC			
	Efficiency	92-96%			
	Frequency	50/60Hz			
	Cable length	1 meter with plug			
	Plug type (optional)	US/AU/EU/UK			
	Power factor	PF>0.98/110VAC & PF>0.95/230VAC			
Output	Voltage	14.6V DC	29.2V DC	43.8V DC	58.4V DC
	Charging current	20A	10A	6.8A	5A
	Power	300W			
	Voltage regulation	± 1-5%			
	Load regulation	± 1-5%			
	Ripple & noise	300mVp-p		400mVp-p	
	Cables length (red/black)	1 meter(red/black), w./ standard rings M8/M10			
Environment	Working temperature	-40°C ~ +60°C			
	Working humidity	20% ~ 90% RH			
	Storage temperature	-40°C ~ +90°C			
Function	Waterproof	IP65			
	Over current protection	YES			
	Over voltage protection	YES			
	Short-circuit protection	YES			
	Over temperature protection	YES			
Mechanical	Weight	≤ 1.1kg			
	Size	200*77*30mm			
Other	Shell material	Die-cast aluminum			
	Packaging	Brown box			



## 600W AC to DC Waterproof Battery Charger

### Design Features

- \* Design meeting by CE/RoHS/UL
- \* Heavy duty design, Soft start
- \* Imported capacitors, high reliability
- \* Over voltage protection
- \* Over temperature protection
- \* Cooling by free air convection
- \* Isolated between input & output
- \* 100% burn-in test, high reliability
- \* Waterproof, Dust-proof, Shockproof
- \* Short-circuit protection
- \* Over current protection
- \* 1 year limited warranty

### Applications

- \* Industrial
- \* EV/E-scooter
- \* Logging Vehicles
- \* Alternative Energy
- \* Dual-battery System
- \* Lithium/AGM batteries etc.
- \* Boat & Yacht
- \* Golf Cart & Forklift



Model No.		WG-12C600S	WG-24C600S	WG-36C600S	WG-48C600S
Input	Rated voltage	110V/230V AC			
	Voltage range	90-265V AC			
	Efficiency	92-96%			
	Frequency	50/60Hz			
	Cable length	1 meter with plug			
	Plug type (optional)	US/AU/EU/UK			
	Power factor	PF>0.98/110VAC & PF>0.95/230VAC			
Output	Voltage	14.6V DC	29.2V DC	43.8V DC	58.4V DC
	Charging current	40A	20A	13.6A	10A
	Power	600W			
	Voltage regulation	± 1-5%			
	Load regulation	± 1-5%			
	Ripple & noise	300mVp-p		400mVp-p	
	Cables length (red/black)	1 meter(red/black), w./ standard rings M8/M10			
Environment	Working temperature	-40°C ~ +60°C			
	Working humidity	20% ~ 90% RH			
	Storage temperature	-40°C ~ +90°C			
Function	Waterproof	IP65			
	Over current protection	YES			
	Over voltage protection	YES			
	Short-circuit protection	YES			
	Over temperature protection	YES			
Mechanical	Weight	≤ 2.1kg			
	Size	190*145*40mm			
Other	Shell material	Aluminum			
	Packaging	Brown box			