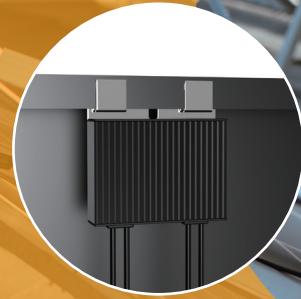


PV Back



Intelligent Optimizer & Monitoring SUNGO iOPT 800W

www.sungoess.com
E-mail: sales@sungoess.com



Data Gateway (GT)

Features

🛡️ Safety

Module-level automatic rapid shutdown, ensuring fire and maintenance safety

📱 Intelligent Management

Module-level data intelligent monitoring, One App to Manage the PV power plant

⚡ Optimize Power Generation

Module-level MPPT ensures optimal performance regardless of shadows, malfunction, etc, resulting in a remarkable power generation increase of 5%-30%

🔧 Flexible Use

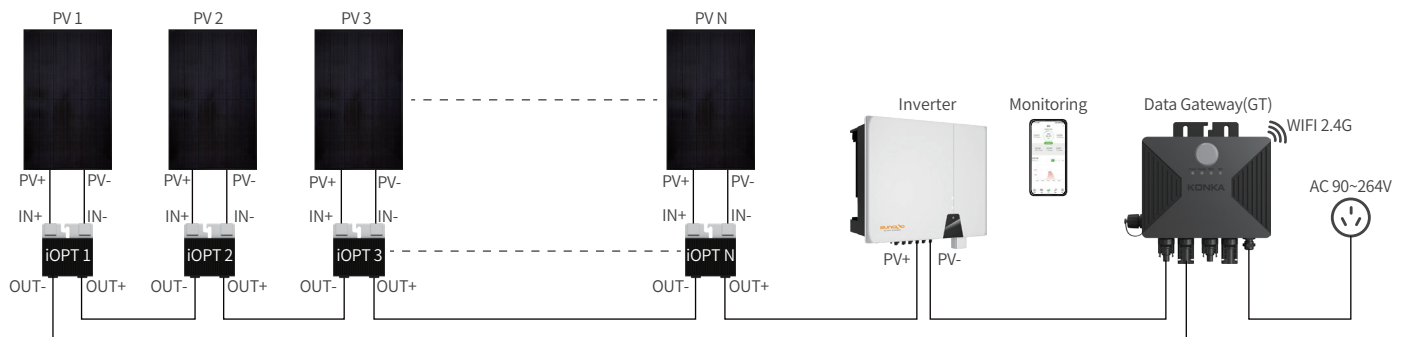
Matching mainstream PV modules and various inverters for worry-free installation of PV power plants in operation and under construction

⚙️ Advanced MPPT Algorithm

The MPPT algorithm is not only advanced but also boasts rapid calculation speeds, resulting in efficiency levels exceeding 99.5% and peaking at 99.7%

🛡️ Quality Warranty

High stability, 25-year warranty



Optimizer Connection Diagram

Optimizer Technical Parameters

Model	SUNGO iOPT 800W
DC input	
Max input power	800W
Max voltage	70V
MPPT voltage range	12-60V
Max continuous input current	21A
Max input short-circuits current	23A
Night self-consumption	0W
DC output	
Output voltage	0-60V
Max continuous output current	21A
Max output power	780W
Max system voltage	1500V
DC output during shutdown	
Output voltage (without iOPT GT)	1±0.1V
Efficiency	
Peak MPPT efficiency	≥99.5%
Communication	
Communication Method	PLC
Communication parameter	PV Voltage, Output Voltage, Output Current, Output Power, Temperature, State
Advanced protection	
Input overvoltage protection	>75V
Output overcurrent protection	>22A
Output overload protection	>800W
High temperature protection	>110°C
General data	
Dimensions (W*D*H)	116*31.5*123mm
Input/output cable length	IN+ 200 / IN- 1100 / OUT+ 750 / IN- 750mm
Input/output cable size	4mm ² (12AWG) / 4mm ² (12AWG)
Terminals	MC4(Compatible)
Protection rating	IP68
Relative humidity	0-100%RH
Operating temperature range	-40~+65°C
Cooling	Natural cooling

Data Gateway Technical Parameters

Model	SUNGO GT
Match with	SUNGO iOPT 800W
AC input parameters	
AC input voltage range	90-264V
AC Input frequency	50/60Hz
Maximum AC input power	5W
Maximum AC input current	0.1A@90Vac
PV input parameters	
Terminals	MC4(Compatible)
Maximum system voltage	1500V
Nos of input strings	2
Max current of each string	21A
Max Module Nos per string	30
Communication Method	
Communication with optimizer	PLC
Communication with upper machine	2.4GHz Wi-Fi / RS485
Rapid Shutdown	
Initial state	1. OFF when AC is not connected 2. ON when AC is connected
Switch-on	Press the button once until the Running light is on
Switch-on time	<5s
Shut-down	1. Press the button once until the RSD indicator lights up 2. Controller AC power off, all indicator lights off
Shut-down time	<30s
Standards	
Electromagnetic compatibility (EMS)	IEC61000-6-1, IEC61000-6-2, IEC61000-6-3
Safety	IEC62109-1
RoHs	Yes
Installation specification	
Dimension (W*D*H)	140*33.5*175mm
AC input cable length	1m
Protection level	IP67
Working temperature range	-40~+70°C
Storage temperature range	-40~+85°C
Cooling	Natural cooling
Form of installation	Wall hanging/holding, screw locking