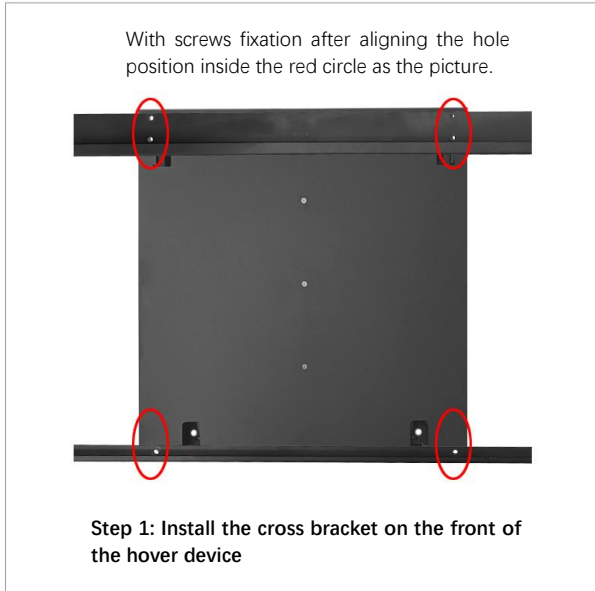


Hover Equipment Installation Guide

1 . Mount Installation



2. Example: Hover Device on the Mobile Stand



The Hover Device is suitable for the mobile stand that there is no middle plant frame.

Such as the following mobile stands



3. How to adjust the support weight of the hovering device to be suitable for different sizes of TV sets?

Usually, there are 4 kinds of situations as below

Situation 1

When the display is at the upper end and cannot be pulled down,

Please adjust the screws at both ends to relax the springs and lower them to the appropriate position, and the springs at both ends must be kept in the same horizontal line.

By adjusting the screw position



Front Side View

Situation 2

When the display is at the lower end and cannot be pulled up

Please adjust the screws at both ends to tighten and lift the springs to the appropriate position until hovering is realized. The springs at both ends must stay at the same level.

By adjusting the screw position



Front Side View

Situation 3

When the display is in a hovering state, but the push-pull force up and down is relatively large,

Please follow the screw adjustment scale and test the tightness of the adjustment spring in the smallest scale to achieve the minimum pushing and pulling force and realize random hovering. At the same time, the springs at both ends must be kept in the same horizontal line.

By adjusting the screw position



Front Side View

Situation 4

When the display is in a hovering state but the upward and downward pushing and pulling force is relatively large Please adjust the scale according to the screw, and test the tightness of the adjusting spring with the minimum scale to achieve the minimum pushing and pulling force and realize random hovering.

The springs at both ends must be kept in the same horizontal line

By adjusting the screw position



Front Side View