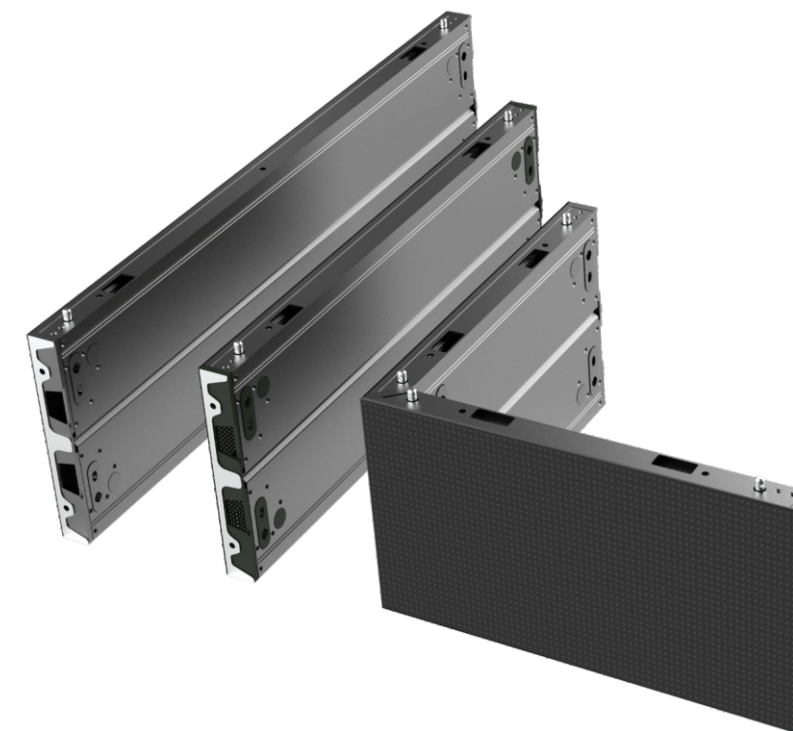


# WB SERIES

Wallpaper pro LED panel



## WB SERIES

- Direct wall-mounted LED solution
- One universal cabinet for all pitches
- Cable-free module design
- Easy for 16:9 screen ratio
- Easy installation & access
- Only 38mm in thickness
- Only 24kg/m<sup>2</sup>
- Dual backup on power and receiving card
- Front access



Front Access



Light Weight



High Definition

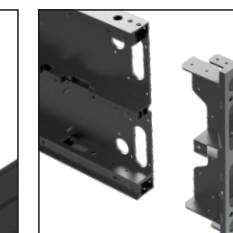
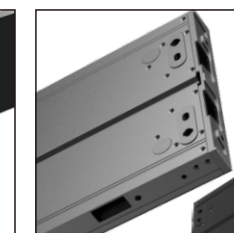
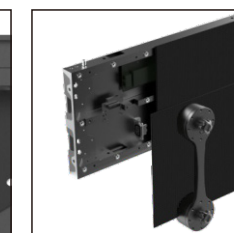
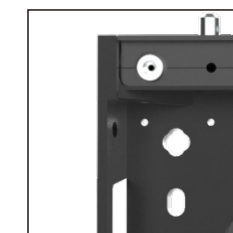


Ultra Slim



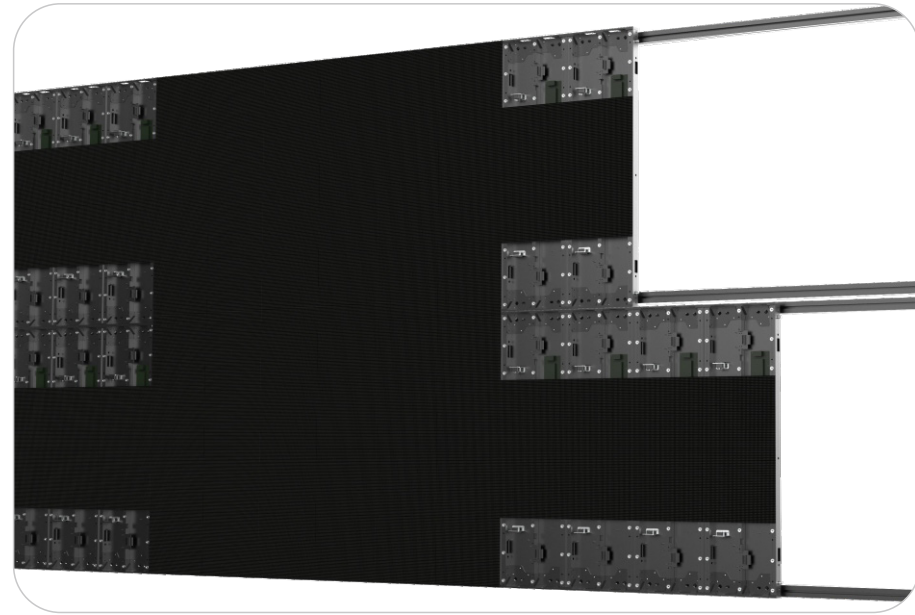
Noise Free

CE (E) RoHS (EMC)

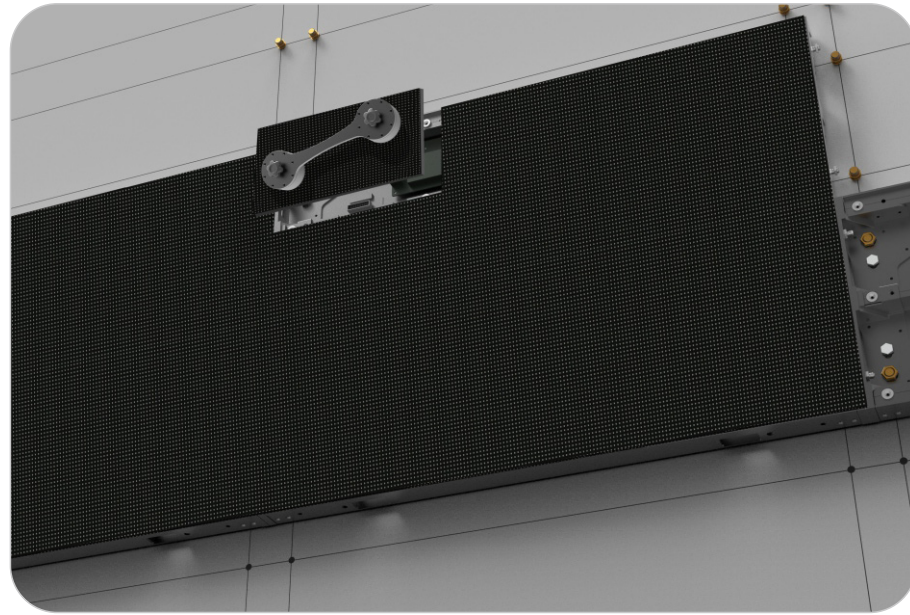




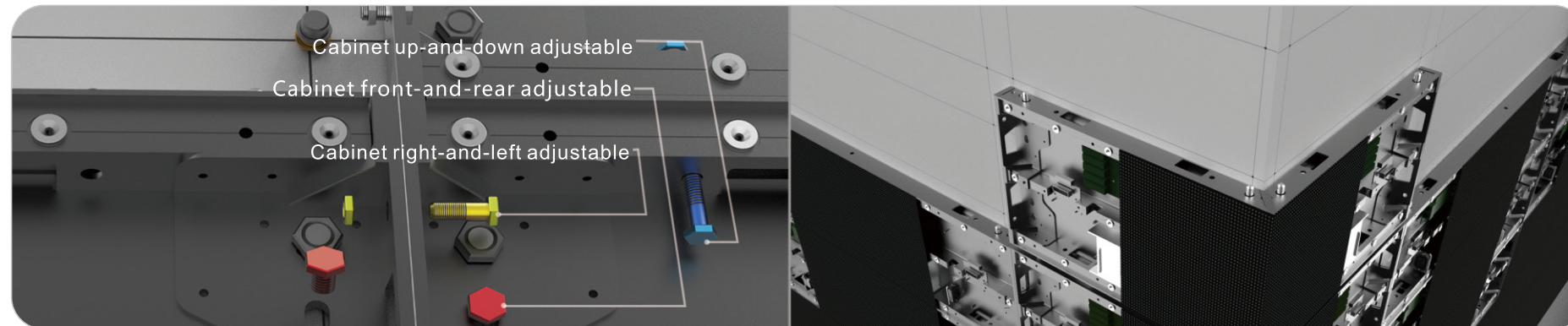
## FEATURES



Frame support installation



Wall-mounted installation



Wall-mounted installation, positioning adjustable without frame support

## SPECIFICATIONS

Parameter	Unit	WB1.5	WB1.9	WB2.6	WB2.8	WB2.9	WB3.9
Pixel pitch	mm	1.563	1.952	2.604	2.841	2.976	3.906
Brightness	nits	600	800	1200	1100	1100	1200
Pixel configuration	R/G/B	SMD3 in 1					
Colour temperature	deg.K	6500					
Viewing angle-Horizontal(50% brightness)	deg.	160 (+70/-70)					
Viewing angle-Vertical (50% brightness)	deg.	140 (+70/-70)					
Recommended minimum viewing distance	m	1.5	1.9	2.6	2.8	2.9	3.9
Panel width	mm	1000					
Panel height	mm	281.25					
Panel depth	mm	38					
Panel area	m <sup>2</sup>	0.2813					
Panel material		Die-casting Aluminum+Alloy Aluminum					
Panel weight	Kg	7.9					
Ingress protection (front/rear)	IP	30/30					
Pixel matrix per panel		640x180	512x144	384x108	352x99	336x94	256x72
Brightness control		255					
Digital processing	bit	13					
Frame rate	Hertz	50~60					
Display refresh rate	Hertz	2880					
Input voltage	VAC	100~240					
Input power frequency	Hertz	50~60					
Input power (Max.)	W/m <sup>2</sup>	480	450	450	480	580	550
Input power (Avg.)	W/m <sup>2</sup>	168	157	157	168	200	193
Operating temperature range	deg.C	-10~+40℃					
Lifetime (50% brightness)	Hour	100,000					