

X SERIES

High end rental LED panel



FC CE ETL RoHS EMC

X SERIES



- Modular design
- Magnet-assisted assembly, single person handling without tools
- Integrated ladder for convenient access
- -10° ~ +10° concave & convex
- Full-enclosed IM and power box, IP65
- Fanless, noise free
- GOB optional, anti-collision, moisture & dust proof
- Memory-on-board IM for perfect color uniformity
- Various panel optional, 250 x 250mm / 250 x 500mm / 90° corner panel



Front Access



High
Brightness



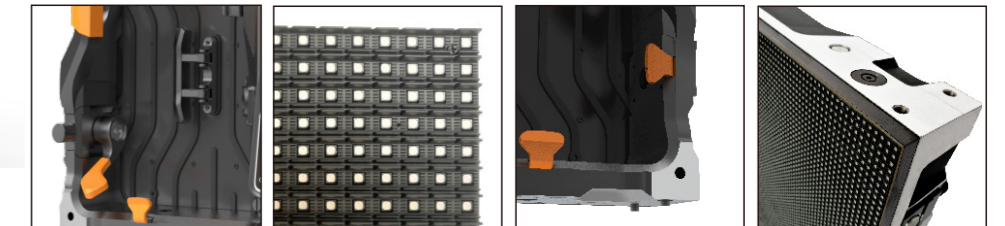
IP65



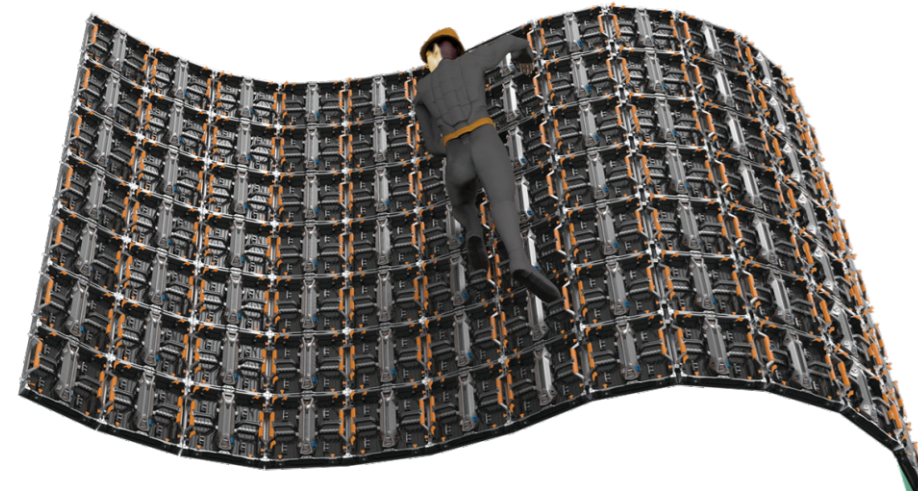
Rental



Noise Free

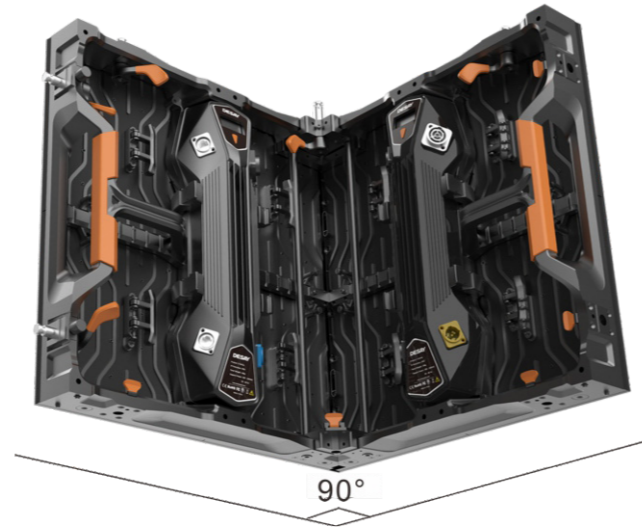


FEATURES



Concave & convex

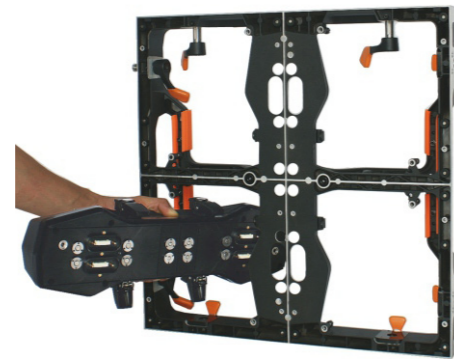
Integrated ladder



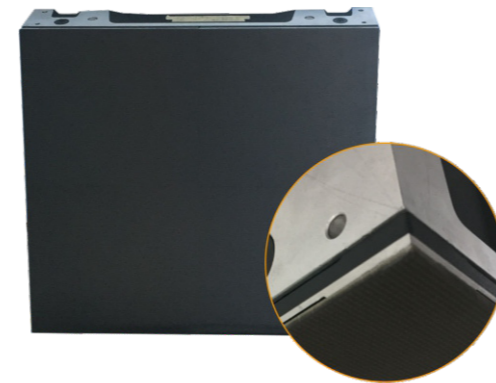
90° corner panel



Modular design



Front & rear access



GOB module optional

SPECIFICATIONS

Parameter	Unit	X1.2i	X1.5i	X1.9i	X2.6i	X2.9i	X3.9i	X3.1	X3.9	X4.4	X5.2
Pixel pitch	mm	1.25	1.563	1.953	2.604	2.976	3.906	3.125	3.906	4.464	5.208
Brightness	nits	600	600	800	1500	1500	1500	3000	5000	5000	5000
Pixel configuration	R/G/B	Mini2 in 1	SMD3 in 1								
Colour temperature	deg.K	6500									
Viewing angle-Horizontal (50% brightness)	deg.	160 (+70/-70)									
Viewing angle-Vertical (50% brightness)	deg.	140 (+70/-70)	140 (+70/-70)	140 (+70/-70)	140 (+70/-70)	140 (+70/-70)	140 (+70/-70)	100 (+50/-50)	100 (+50/-50)	70 (+25/-45)	70 (+25/-45)
Recommended minimum viewing distance	m	1.2	1.5	1.9	2.6	2.9	3.9	3.1	3.9	4.4	5.2
Panel width	mm	500									
Panel height	mm	500									
Panel depth	mm	100									
Panel area	m ²	0.25									
Panel material		Aluminum									
Panel weight	Kg	10.9	10.9	10.9	10	10	10	10.5	10.5	10.5	10.5
Ingress protection (front/rear)	IP	30/30	30/30	30/30	30/30	30/30	30/30	65/54	65/54	65/54	65/54
Pixel matrix per panel		400x400	320x320	256x256	192x192	168x168	128x128	160x160	128x128	112x112	96x96
Brightness control		255									
Digital processing	bit	13	13	13	14	14	14	14	14	14	14
Frame rate	Hertz	50/60									
Display refresh rate	Hertz	3840	2880	2880	3840	3840	3840	3840	3840	3840	3840
Input voltage	VAC	100~240									
Input power frequency	Hertz	50~60									
Input power (Max.)	W/m ²	750	720	760	660	620	600	760	640	640	600
Input power (Avg.)	W/m ²	262	252	266	231	217	210	266	224	224	210
Operating temperature range	deg.C	-10~+40	-10~+40	-10~+40	-10~+40	-10~+40	-10~+40	-20~+45	-20~+45	-20~+45	-20~+45
Lifetime (50% brightness)	Hour	100,000									