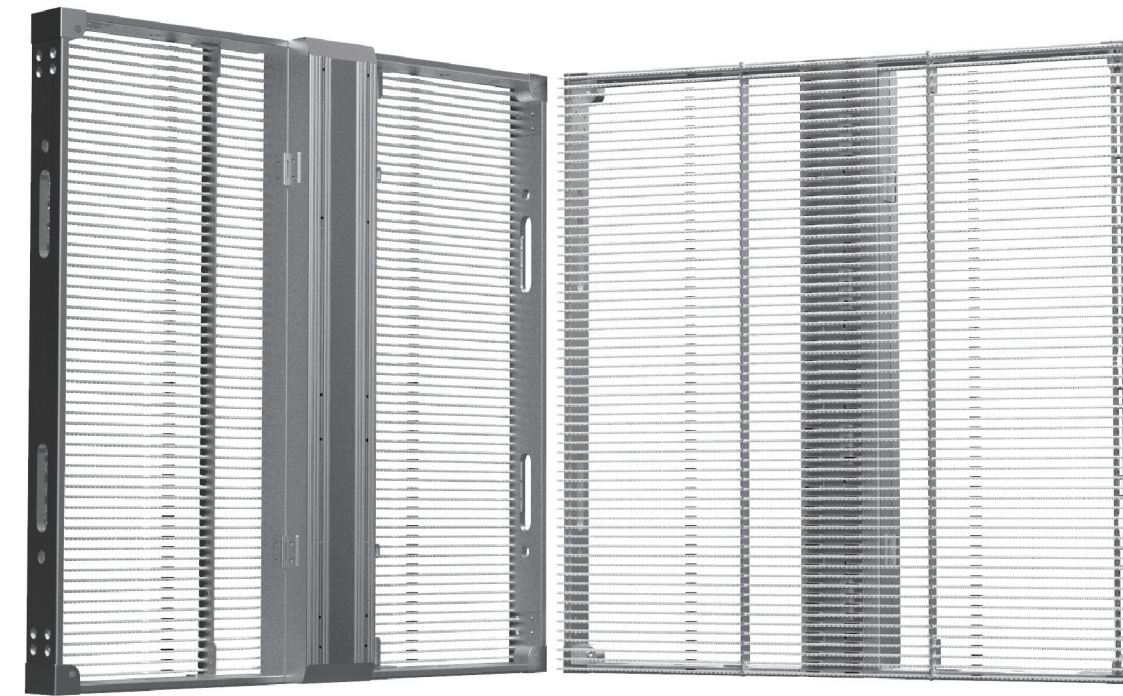


G SERIES

High-transparency window LED display



G SERIES

- High transparency, up to 78%
- Light weight
- Super slim
- High brightness, over 6,000nits brightness
- Individual strip design with hot plug
- Sturdy and reliable cabinet design
- Invisible cabling, tidy appearance



Front Access



LightWeight



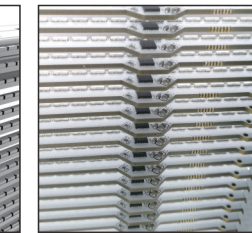
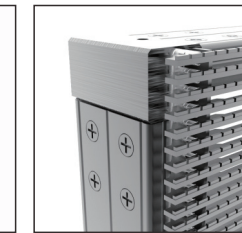
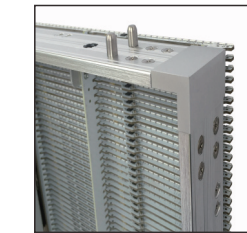
High
Brightness



Ultra Slim



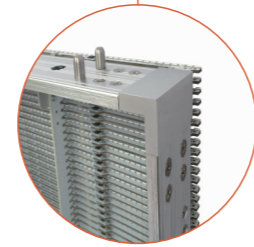
Wide
Viewing Angle



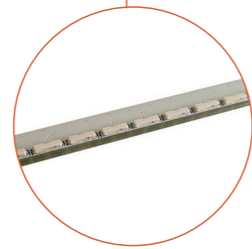
FEATURES



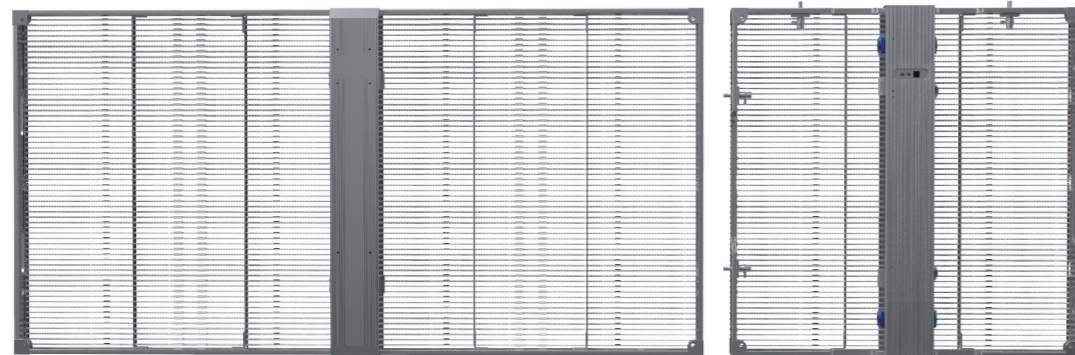
Invisible cabling



Sturdy frame, super slim



Side emitting LED strip, ultra bright



Rental panel and fixed panel optional

SPECIFICATIONS

Parameter	Unit	G3-7	G5	G7	G10
Pixel pitch	mm	H3.906/V7.813	5.208	7.813	10.417
Brightness	nits	4000	5000	5000	4500
Pixel configuration	R/G/B	SMD 3 in 1			
Viewing angle-Horizontal (50% brightness)	deg.	160 (+70/-70)			
Viewing angle-Vertical (50% brightness)	deg.	90(+25/-65)			
Recommended minimum viewing distance	m	3.9	5.2	7.8	10.4
Transparency ratio	%	65	40	50	78
Panel width	mm	1000	500	500	500
Panel height	mm	500			
Panel depth	mm	90			
Panel area	m ²	0.5	0.25	0.25	0.25
Panel material		Aluminum			
Panel weight	Kg	5	5.6	5.4	5.2
Pixels per panel		16,384	9,216	4,096	2,034
Pixels per sq.meter		32,768	36,864	16,384	9,216
Pixel matrix per panel		256x64	96x96	64x64	48x48
Brightness control		255			
Digital processing	bit	14			
Frame rate	Hertz	50/60			
Display refresh rate	Hertz	1920			
Input voltage (nomina)	VAC	100 ~ 240			
Input power frequency	Hertz	50 ~ 60			
Input power (Max.)	W/m ²	700	850	880	960
Input power (Avg.)	W/m ²	245	295	308	336
Operating temperature range	deg.C	-10 ~ +40			
Lifetime (50% brightness)	Hour	100,000			